

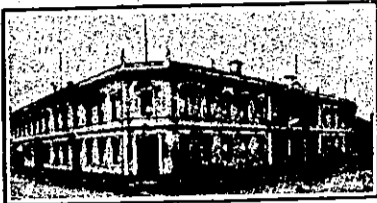
NEW ZEALAND HOTEL DIRECTORY.—(CONTINUED). — PATRONISED BY HORSEMEN, CYCLISTS, MOTORISTS, SPORTSMEN, COMMERCIAL TRAVELLERS AND THE THEATRICAL PROFESSION.

CHRISTCHURCH.—Continued.



MARINE HOTEL, SUMNER.

An Ideal Holiday Resort, offering excellent Accommodation for the Travelling Public.  
BEST BRANDS OF WINES AND SPIRITS. HOT, COLD, AND SHOWER BATHS. BILLIARD TABLE.  
JAS. HATFIELD ..... Proprietor.



WHERE TO STAY IN CHRISTCHURCH.

STOREY'S HOTEL.

Right Opposite Railway Station.

Convenient to all parts of City and Suburbs.  
Electric Cars start from the door.

Proprietor: WILLIAM JAMES.  
(Late of "Somerset Hotel," Ashburton).

Do You Want Accommodation?  
Then Interview  
CHARLIE L. STARK.  
(Late of Gore, Oamaru, and Waimate).

CAVERSHAM HOTEL.

Corner HIGH AND MADRAS STS. CHRISTCHURCH.  
Where he will supply you with a Good Bed and the Best of Meals, for 4s 6d per day. Ask your Cabman to drive you to the CAVERSHAM. Manning's Celebrated Ales.

KAVANAGH'S QUEEN'S HOTEL.

Corner Manchester and Cashel Streets, CHRISTCHURCH.  
(Opposite Union S.S. Co.'s Offices.)  
J. J. KAVANAGH - Proprietor.  
Pleased to see old and new friends.  
Visitors and travelling public will be accorded the very best attention.  
Liquors of the Best Brands only.  
Speight's Ales on draught.

DANNEVIRKE.

When Visiting  
**DANNEVIRKE,**  
Call at the

BEST ALES, WINES, AND SPIRITS KEPT.  
Moderate Tariff.

**CHAS. BADDELEY,**  
PROPRIETOR.

DARGAVILLE.



NORTHERN WAIROA HOTEL, DARGAVILLE.

EVERY POSSIBLE CONVENIENCE FOR THE TRAVELLING PUBLIC.  
The BILLIARD ROOM is fitted with one of Alcock's Best Tables.  
Good Stables and Paddock adjoining the premises.

F. C. BASS ..... Proprietor.

UNDER THE PATRONAGE OF HIS EXCELLENCY THE GOVERNOR.

NOTICE TO THE GENERAL PUBLIC.

THE CENTRAL HOTEL.

DARGAVILLE  
(Close to Wharf and Railway Station).

Is now under the Management of MR. H. H. DYER.

And the Travelling Public will find it one of the most Convenient Houses in the District.

AI ACCOMMODATION.

BEST BRANDS OF WINES AND SPIRITS.

Telegrams Promptly Attended To.

DRURY.



RAILWAY HOTEL, DRURY.

This Hotel is within easy distance from town, being only 2 1/2 miles by rail direct. There is splendid Shooting in the district.

First-class Table. Moderate Tariff. Special arrangements for week-end parties.  
MRS. H. BINGLE ..... Proprietress.

DUNEDIN.

BOWLING GREEN HOTEL.

Corner of Frederick and Cumberland streets, DUNEDIN.

W. D. Wyatt, late of Wellington, begs to inform his Friends and Country Visitors that he has taken the above well-known Hotel, which has been thoroughly Renovated and Refurnished, and is now in a position to offer his Patrons First-class Accommodation.

TERMS MODERATE. NOTED HOUSE FOR BEST WINES AND SPIRITS.

SOUTHERN HOTEL, PRINCES-STREET, DUNEDIN.

H. T. ANDREWS .. Proprietor.  
(Late of Wolseley Hotel, Winchester).

Splendid accommodation for Visitors. Only the very Best Wines and Spirits Stocked.

GLADSTONE HOTEL, MACLAGGAN-STREET, DUNEDIN.

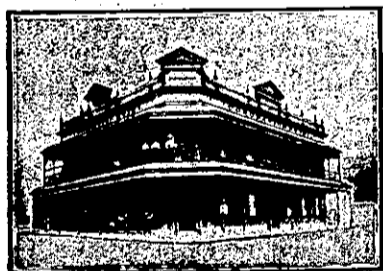
JOHN COLLINS ..... Proprietor.  
(Late of Al Hotel, Pelicet Bay).

The most Centrally-situated Hotel in the City. First-class Accommodation for Tourists Travellers, and Boarders. Suites of rooms for Families. Charges Moderate. A Special Feature: 1s Lunch from 12 to 2 o'clock. Hot, Cold, and Shower Baths. The Very Best of Wines, Ales, and Spirits supplied.

CRITERION HOTEL, PRINCES STREET, DUNEDIN.

First-class Accommodation for Boarders and Travelling Public. Prompt attention to Letters and Telegrams. Night and Day Porter kept. SPEIGHT'S ALES ON DRAUGHT.  
Telephone 211. P.O. Box 421.  
JAMES MURPHY .. Proprietor.

ELTHAM.



CORONATION HOTEL, ELTHAM.—

J. H. BLEAKLEY, Proprietor.—Excellent Accommodation for the Travelling Public. The Proprietor wishes to announce that he has just taken over the above hotel. The furniture and fittings throughout are all that can be desired, and visitors can rely on getting the best of attention. Only the best of Wines, Ales, and Spirits kept. Letters and Telegrams promptly attended to. Hot and Cold Shower Baths.

FEATHERSTON.

EMPIRE HOTEL, FEATHERSTON.

The EMPIRE is the appointed Hotel to the Wellington Commercial Travellers' Association and N.Z. Cyclists' Touring Club.

JOHN H. TULLY .... Proprietor.

FEILDING.

CHELTEMHAM HOTEL, NEAR FEILDING.

Having taken over the above Hotel, I wish to notify the Residents of the District that I have stocked it with the best Liquors, etc., and customers can rely upon getting the brand they ask for.

R. W. BEADNALL.

FOXTON.

POST OFFICE HOTEL, FOXTON.

THE LEADING HOTEL IN "FLAXOPOLIS."

Coaches leave Hotel for Shannon and Levin.

BEST OF WINES AND SPIRITS. SPEIGHT'S BEER.

GEO. GRAY ..... Proprietor.

FOXTON.—Continued.

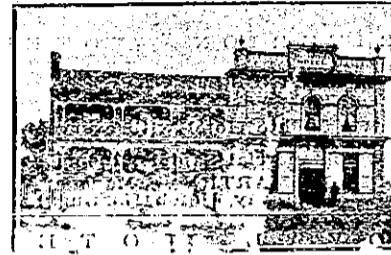


MANAWATU HOTEL.

FOXTON.  
FRED HADFIELD - Proprietor.

Visitors will find every Comfort and Convenience at this well-known house.

ONLY the BEST BRANDS OF WINES, SPIRITS, AND ALES STOCKED.



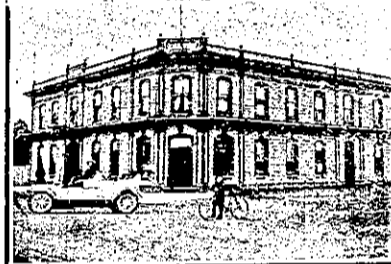
POST OFFICE HOTEL, FOXTON.

BEST OF WINES AND SPIRITS. ONLY SPEIGHT'S BEER.

Coaches leave Hotel for Shannon and Levin twice daily.

FIRST-CLASS ACCOMMODATION FOR TRAVELLERS.

GRAY AND DALZELL .. Proprietors.



WHYTE'S HOTEL, FOXTON.

The recognised house for Commercial Travellers. This Hotel offers superior accommodation to Travellers, and is a first-class family house in every respect. Letters and telegrams promptly attended to. Only the best of Ales, Wines and Spirits stocked.

W. J. WHITE ..... Proprietor.

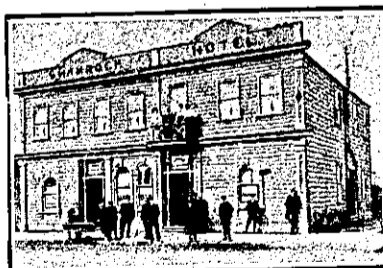
HAWERA.

CENTRAL HOTEL.

THE WELL-KNOWN HOUSE IN HAWERA FOR TRAVELLERS AND TOURISTS.

EVERYTHING OF THE BEST.

B. HARRINGTON, Proprietor.

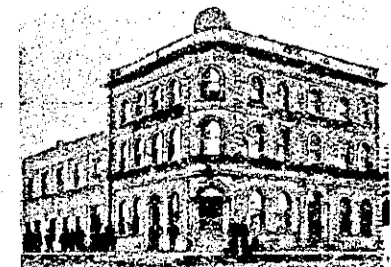


SHAMROCK HOTEL, HAWERA.

JAS. BIGGINS ..... Proprietor.  
(Late of Tarataki Hotel).

First-class Accommodation. Best of Liquors. Moderate Tariff.

HAMILTON.



WAIKATO HOTEL, HAMILTON EAST.

The travelling public will find every modern comfort and convenience at this well-known and popular Hotel. Coaches meet all trains.

J. W. H. BRIGHT  
(Late of Hamilton Hotel), Proprietor.

HAMILTON.—Continued.



COMMERCIAL HOTEL, HAMILTON.

DAVID NORDEN ..... Proprietor

The Travelling Public specially Catered for.

TERMS MODERATE.

Telephone No. 12.

UNDER NEW MANAGEMENT.



WESTCOURT, HAMILTON

(Opposite Railway Station).

PRIVATE BOARD AND RESIDENCE

TARIFF: 4s 6d PER DAY.

D. McVICAR ..... Proprietor.



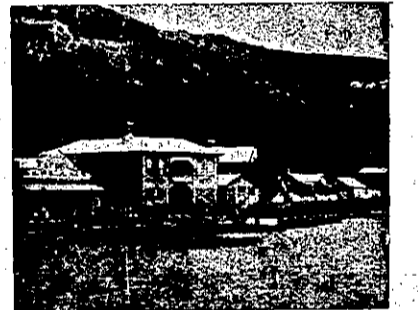
HAMILTON HOTEL, HAMILTON.

J. R. HOOPER ..... Proprietor

This Commodious and Up-to-date Hotel is replete with every modern convenience for the Comfort of Visitors. The Cuisine is first-class. Tariff Moderate.

ONLY THE BEST OF LIQUORS KEPT ON STOCK.

HOKIANGA.



KOHUKOHU HOTEL, KOHUKOHU, HOKIANGA.

THE PRINCIPAL TOWNSHIP IN THE NORTH.

Every Accommodation in this New, Clean, and Tidy Hostelry. All Liquors of the very best. Billiards, Stables, Good Meals. Charges in all Departments—Moderate.

JOHN NICHOLSON .. Proprietor.

HOKITIKA.

KELLER'S HOTEL, HOKITIKA.

Patronised by the Leading Commercial men on the West Coast. Only the best brands, etc., supplied.

W. KELLER ..... Proprietor.

Under Vice-regal Patronage.

HUNTERVILLE.

HUNTERVILLE HOTEL, HUNTERVILLE.

E. D. HAMMOND .... Proprietor

The Proprietor wishes to intimate that he has just taken over the above premises. This Hotel offers superior Accommodation to Travellers. Good Table. Best of Wines, Ales, etc. Terms: 4s 6d per day.

ARGYLE HOTEL, HUNTERVILLE.

First-class Accommodation for the Travelling Public. Everything of the best quality. Moderate Tariff.

Letters and Telegrams promptly attended to.

H. McMANAWAY .. Proprietor.

HUNTLY.

HUNTLY HOTEL, HUNTLY.

L. B. HARRIS .... Proprietor.

This Hotel is now one of the largest in the Waikato. All trains stop at Huntly, and the Hotel is a few yards from the Station. First-class Accommodation and Excellent Table.