

NEW ZEALAND HOTEL DIRECTORY—(CONTINUED). — PATRONISED BY HORSEMEN, CYCLISTS, MOTORISTS, SPORTSMEN, COMMERCIAL TRAVELLERS AND THE THEATRICAL PROFESSION.

AUCKLAND.—Continued.

QUEEN'S HOTEL,
UPPER SYMONDS ST., AUCKLAND.

VICTOR CORNAGA, Proprietor.

Wines and Spirits of the Best Brands only kept in stock. First-class Accommodation for the travelling public.



CRITERION HOTEL, OTAHUHU.

Good Accommodation for the Travelling Public. Replete with every Modern Convenience. Only the Best Brands of Wines, Ales, Spirits, etc., kept on Stock.

A. UNDERWOOD Proprietor.



STAR HOTEL, OTAHUHU.

J. J. RUSSELL Proprietor

The Best Wines, Spirits, Beers, and Cigars. All the Comforts of a Home and a Good Table Kept. Charges Reasonable, and Civility the Rule of House. Commodious Stables. Good Paddocks Billiards.

PRINCE OF WALES' HOTEL,
HOBSON-ST., AUCKLAND.

H. S. BOOKER Proprietor.
(Late of Lake Hotel Takapuna).

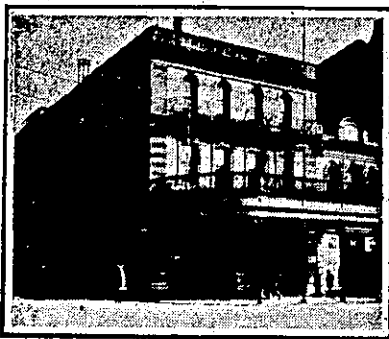
Every home comfort for visitors. Billiards, Billiards, Campbell and Ehrenfried's XXXX Prize Ale on Draught. The best brands of Wines and Spirits.

QUEEN'S FERRY HOTEL,

VULCAN LANE,
AUCKLAND.

T. MARKWICK

Begs to notify that he has taken over the above favourite Hostelry. His trade principle is to keep nothing but the very best, and to aim at the comfort of his Patrons.



METROPOLITAN HOTEL,

QUEEN-STREET, AUCKLAND.

J. MORRISON .. Proprietor.

The new Proprietor has much pleasure in announcing that this popular House has been thoroughly renovated and re-furnished throughout, and now offers accommodation equal to any other in the colony. Entirely New Stock of Wines, Spirits, and Ales have been laid down, and the Cuisine is unexcelled.

SHAMROCK HOTEL,

Just above Opera House.

First-class Accommodation. Everything of the Best.

DAN RYAN, Proprietor.
(Late of Papakura).

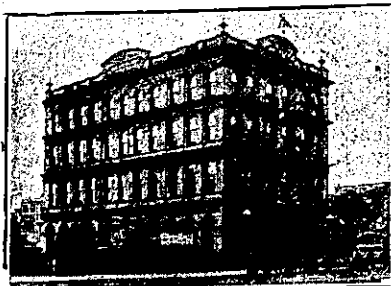
SHAKESPEARE HOTEL,
ALBERT-ST., AUCKLAND.

J. BONNER

(For Seven Years connected with the Trams).

ONLY THE BEST WINES, ALES, AND SPIRITS ON DRAUGHT

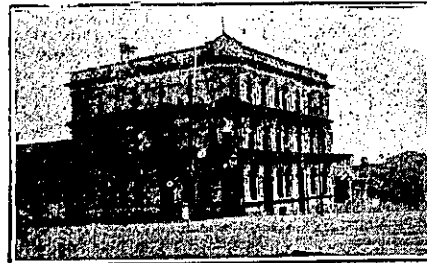
AUCKLAND.—Continued.



WAVERLEY HOTEL,
QUEEN-STREET, AUCKLAND.

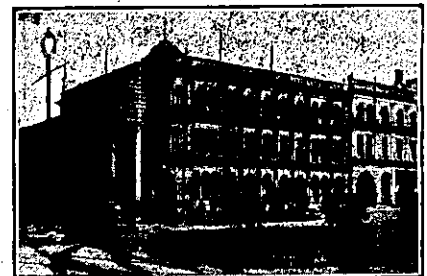
Near Railway Station, Tram Terminus the Wharf, and Bus Stands. First-class Table d'Hote. Conveyance meets Steamers and Trains. Tariff: 7s per day; £2 2s per week. Telephone 370. This Hotel has a beautiful view of the Harbour.

MAURICE O'CONNOR Proprietor.



CITY HOTEL, Corner of VICTORIA & HOBSON STS., AUCKLAND.

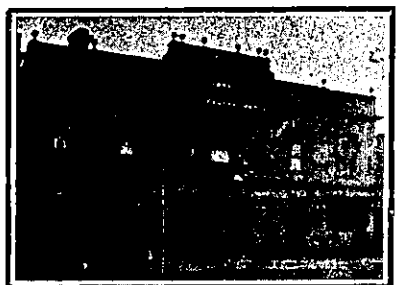
WALTER STIMPSON (Late of the Queen's Ferry). Will be glad to welcome Old and New Friends at the above Popular House. The Wines, Spirits, Ales and Cuisine will be found to be unexceptionable, while the Accommodation is thoroughly modern.



WAITEMATA HOTEL, Cor. QUEEN & CUSTOM STS., Auckland.
Close to the Wharf and Railway Station.

VISITORS WILL FIND EVERY COMFORT AND CONVENIENCE.

JOHN ENDEAN Proprietor.
Telephone 539.



ROYAL GEORGE HOTEL,
NEWMARET.

P. FARQUHAR .. Proprietor

Buses and Trams pass the Door every Three Minutes. BEST BRANDS OF WINES AND SPIRITS KEPT. Terms Moderate



BRITISH HOTEL, CORNER OF DURHAM AND QUEEN STREETS.

J. H. PAGNI (late Western and Oriental Hotels, Wellington), begs to invite all his friends and general public to inspect the new improvements at the above Hotel, which is now the most comfortable and up-to-date in Auckland. Visitors will find first-class accommodation. Nothing but the Best and Most Reliable Brands of Spirits, Wines, and Beer and Stout kept in stock. New Saloon Bar now open.

THE EDINBURGH CASTLE HOTEL,
UPPER SYMONDS STREET, AUCKLAND.

YOU CAN'T MISS IT—END OF PENNY SECTION.

J. S. PALMER.....Proprietor.

AUCKLAND.—Continued.

OCCIDENTAL HOTEL,

VULCAN LANE, AUCKLAND.

W. MONTGOMERY, Proprietor.

THE SPORTING RENDEZVOUS.

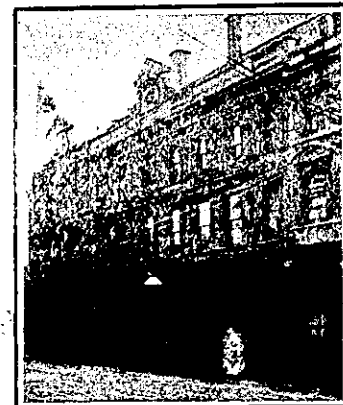
MR. W. MONTGOMERY having taken over this Hotel is sufficient guarantee that the wants of the Sporting and Travelling Public will be well catered for.



GLEESON'S HOTEL,
Corner Custom-street West and Hobson-street, AUCKLAND.

T. J. STOREY Proprietor.

Good Accommodation for Visitors and Tourists and the General Public. Best Brands of Wines and Spirits only stocked.



IMPERIAL HOTEL, FORT-STREET, AUCKLAND.

Absolutely only the Best Wines and Spirits kept in stock. Tariff Moderate. Telephone No. 420.

JOHN KELLY Proprietor.

AWANUI.

AWANUI HOTEL,

NEIL McLEOD Proprietor.

FIRST-CLASS ACCOMMODATION.

ONLY THE BEST OF LIQUORS STOCKED.

CAMBRIDGE.



MASONIC HOTEL, CAMBRIDGE.

E. W. SMITH

(Late of Oxford Hotel, Tirau). Only Best Brands of Ales and Spirits kept. Excellent Table. Every Convenience for Tourists, Travellers and Families. Hot and Cold Baths. Terms Moderate.



NATIONAL HOTEL, CAMBRIDGE.

The Best Appointed and Most Charmingly Situated Hotel in the district. Excellent Cuisine. First-class Billiard Table. Good Stable. First-class Sample Rooms.

J. WATERS Proprietor

CHRISTCHURCH.

EMPIRE HOTEL, CHRISTCHURCH.



Under Entirely New Management. This centrally-situated Hotel is replete with every modern convenience for the travelling public and no effort will be spared to make all visitors thoroughly comfortable. SPEIGHT'S DUNEDIN BEER ONLY ON TAP. Only the Best Brands of Wines and Spirits stocked.

C. CAMPBELL Proprietor.
(late of Adelaide Hotel, Dunedin.)



CITY HOTEL, TRIANGLE, CHRISTCHURCH.

The most centrally-situated House in town for Country Visitors and Travellers generally. Best brands only of Wines and Spirits. Speight's Prize Ales on Draught.

'Phone 608. P.O. Box 558.

J. T. SUTTON Proprietor.

STAR AND GARTER HOTEL, CHRISTCHURCH.

Corner Barbadoes-street and Oxford Terrace.

PAUL B. FLOOD ... Proprietor.

Everything First-class, and Ales, Wines and Spirits are of the highest Order.

THE GLADSTONE HOTEL,
ON Papanui Road, CHRISTCHURCH.

AN UP-TO-DATE HOUSE.

Excellent Accommodation. Liquors of Special Quality and Great Variety. Manning's Ales on Draught.

H. PIPER Proprietor.



LYTTELTON HOTEL, LYTTELTON.

(Under new management). The above Hotel has been renovated throughout, and now offers Accommodation second to none in Lyttelton. Cuisine under the personal supervision of Mrs. Hartshorn. Hot and Cold Water Baths. Best Brands of Ales, Wines, and Spirits. Excellent Billiard Table. Tariff Moderate.

Wm. HARTSHORN, Proprietor.



THE NEW CLARENDON HOTEL, CHRISTCHURCH.

CORNER OF OXFORD TERRACE AND WORCESTER-STREET

(One Minute's Walk from General Post Office.)

Recently Re-built. Superior Accommodation for Tourists and Travellers. All Modern Conveniences. Splendidly Situated.

D. COLLINS ... Proprietor.

GROSVENOR HOTEL, corner Moorhouse Avenue and Madras Street, CHRISTCHURCH.

One Minute from the Railway Station and Trams.

JOHN JACKSON .. Proprietor

(Late of Governor's Bay).

This house has been thoroughly renovated, and visitors will find every comfort and convenience, combined with civility and attention. Only the best Wines and Spirits in Stock.

START THE NEW YEAR WELL

By sending along your Subscription to the

"NEW ZEALAND ILLUSTRATED SPORTING AND DRAMATIC REVIEW."

Absolutely the Best Threepenny Illustrated Weekly published in the Dominion.