

Mr. W. Brown, of the firm of Messrs. Laery and Company, Wellington, leaves for a trip to Australia and England early next year.

Captain S. N. Ziman, of Auckland, who returned by the Maheno, holds a responsible position in the Indian Civil Service, and is at present on furlough. He is an old boy of the Auckland Grammar School, and was the first Auckland Rhodes scholar. He gained his commission while serving on the Indian frontier.

The Government has purchased from Mr. Maurice Coughlan (licensee of the Provincial Hotel, Dunedin) his farm of 1240 acres at Pukekohe, in the Auckland district (states the "Otago Times"). The purchase price is £20,000. Possession will be given on March 31. The surveyors are now cutting up the farm into holdings for returned soldiers. The property is considered one of the most desirable in New Zealand from a dairying point of view, and it is stated that Mr. Coughlan could have obtained a higher price from local purchasers.

Neither Flies, Fleas nor Mosquitoes can live where "FIBRO'L" DISINFECTANT is freely used. Sold in all sizes by merchants or The Glycerole Depot, 204, Hobson Street, Auckland.



TOURISTS AND VISITORS TO AUCKLAND
Please Remember

A.A.A. HIRING GARAGE,
158, ALBERT STREET, AUCKLAND.

Luxurious Cars on Hire Day or Night.
Tours Arranged for Visitors.
Trains and Steamers Met.
Efficient Chauffeurs.
Phone 2590A.

HOUSTON & MAUNSELL,
Proprietors.

THE VICTORIA DRY CLEANING CO.

Longley's Special Process of Dry Cleaning adds seasons to the life of an overcoat or a suit of clothes. Therefore, a small expenditure with Longley often saves a larger one with a tailor. Overcoats, Suits, Etc., Ladies, Costumes and Similar Articles of Wearing Apparel should be sent to
LONGLEY, 60 Victoria St., West
Phone 2161A.

FARMERS, PASTORALISTS AND SPORTSMEN. — Ask Clement Wragge about the weather; six months ahead, 5/6; twelve months, 10/6. Address: Wragge "Institute," Birkenhead.

ADELAIDE HOUSE,
(Under Entirely New Management.)
101, HOBSON STREET, AUCKLAND.

Good accommodation for visitors at a reasonable tariff; 4s. 6d. per day, -28s. 6d. per week. All meals 1s. 6d.

N. ALACH Proprietor.

"LOUVRE"
Parker & Helme, HIGH-CLASS DRESSMAKERS,
Plain and Fancy Blouses. Underwear of every description.
Address: 27, WELLESLEY ST. W. (above Opera House).

Masonic Hotel . . .
GISBORNE.

THE LEADING COMMERCIAL HOTEL IN GISBORNE.

The above Hotel has been rebuilt, and is now open to guests. Visitors and travellers will find everything new, and can rely upon getting every comfort and attention. Best range of sample rooms in the Dominion.

MRS. E. M. PARKER, Proprietress.

Visitors to Wanganui.

HOTEL BRAEBURN,
Anzac Parade,
WANGANUI,

Is Replete with every Modern Convenience, and Recognised as one of the Leading Private Hotels in the Dominion. Magnificent Views from the balcony of River, Sea and Countryside.

An Ideal Holiday Home. Motor Garage, Croquet Lawn, Electric Light. Four Minutes from Train and Steamer

WHEN SELLING YOUR FURNITURE CONSULT

P. W. DOUGLAS,
Who will Sell for you and get the Big Prices. Or, if you prefer, will Buy Straight-out for Cash.
DOUGLAS & CO.,
AUCTIONEERS AND VALUERS,
VICTORIA ST. EAST, AUCKLAND.
Phone 398A.



HIGH-CLASS POMERANIANS FOR SALE.

At Stud, "Bleak House Don," imported. Stud Fee, £5 5s.
At Stud, "Remuera Gold," imported. Stud Fee, £5 5s.
For Sale Puppies by the above Imported Miniature Pomeranians for Pets or Show. All colours. From £5 5s.

FOR SALE LOVELY POKINESE PUPPIES.
From Best Imported Stock. From £10 10s.

Apply to
MRS. F. HOUSE,
"The Whare Kennels,"
142, ADELAIDE RD., WELLINGTON.
Phone 1293.

Waitomo Caves Hostel.

Waitomo, Ruakuri, and Aranui Caves,

Reached by Daily Train from Wellington or Auckland.

THE Government Hostel at Waitomo is situated in a position from which the caves can be conveniently visited, and is connected by Telephone with the local Post and Telegraph Office.

TARIFF
Adults - 10s per Day.
Single Meals 2s 6d each.
Children between the ages of three and 12 half rates.

Obtain your tickets from the Govt. TOURIST BOOKING BUREAU Wellington, corner of Grey and Featherston Sts., opp. G.P.O.
Auckland: Custom Street.
NO EXTRA Charge for Booking.

NAPIER (THE BRIGHTON OF NEW ZEALAND.)

STARTING POINT FOR
LAKE TAUPO
(Hot Lake District)

NAMED THE ANGLERS' PARADISE
8 HOURS MOTOR FROM NAPIER.

Napier to Taupo is undoubtedly one of the most interesting and romantic scenic routes in the Southern Hemisphere, and for rugged mountain landscape is unsurpassed.

A motor car leaves Napier on Thursday at 8 a.m., lunching at Tarawera, arriving Taupo 4 p.m. Taupo depart Friday 8 a.m., Tarawera noon, arrive Napier at 4 p.m. Motor service 1st December to 30th April.

The mail coach leaves Napier on Monday 6.30 a.m., staying at Tarawera overnight, reaching Taupo about 4 p.m. Taupo depart Wednesday 7 a.m., arrive Napier Thursday, about 4 o'clock, December 1st to April 30th. May 1st to November 30th coach leaves Taupo Thursday.

Fares per coach, Napier to Taupo, Single, £2 10s.; Return, £4. Fares per motor car, Napier to Taupo, Single £3 10s.; Return, £6.

Full particulars at Government Tourist and T. Cook and Sons.

H.B. MOTOR COMPANY, LIMITED,
PROPRIETORS, NAPIER.

Commercial Hotel,
THE SQUARE,
PALMERSTON NORTH.

This well-known Hotel is the Rendezvous for Commercials and Visitors.

Replete with every Comfort. Cuisine a Special Feature. Wines and Liquors of the Highest Quality.

THOMAS CHILDS - Proprietor

Wragge's Weather Bureau,

INSTITUTE AND WAIATA GARDENS,
BIRKENHEAD, AUCKLAND.

Farmers, Pastoralists, Sportsmen, ask CLEMENT WRAGGE about the Weather and Coming Seasons. Six Months' Forecast and Best Advice, 7/6; Twelve Months' Ditto, 12/6. For Extra Specials, Enquire.

ARE YOU A MOTORIST?
Then You must read the "N.Z. MOTOR AND CYCLE JOURNAL." Monthly.
Of all Newsagents and Booksellers. PRICE, 6d.

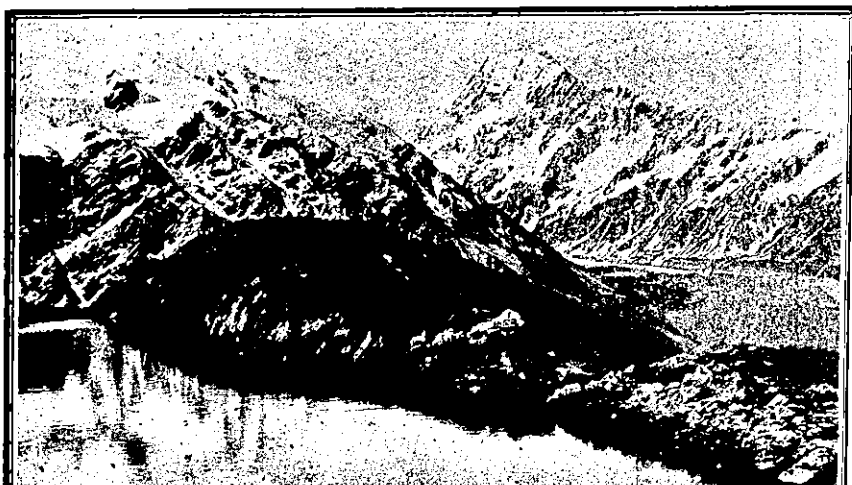


TREATMENT OF PURE OZONE FROM HIGH FREQUENCY VIOLET RAYS.

For Air Passages and General Tonic Violet Rays Spark Generates Ozone — Concentrated Oxygen. Its inhalation not only treats Blood, is Healing and Disinfectant, a Specific of Unquestioned Value for all Lung Complaints. These Treatments are being Performed Daily.

Electrical Violet Rays Treat Successfully Asthma, Anaemia, Acne, Blackheads, Bunions, Carbuncles, Cystitis, Bright's Disease, Bronchitis, Cold Extremities, Constipation, Cold in Lungs, Catarh, Dyspepsia, Eczema, Gout, Insomnia, Iritis, Indigestion, Lumbago, Nervous Diseases, Neuralgia, Neuritis, Pneumonia, Pleurisy, Pruritis, Sciatica, Skin Diseases, Tonsillitis, Writers' Cramp.

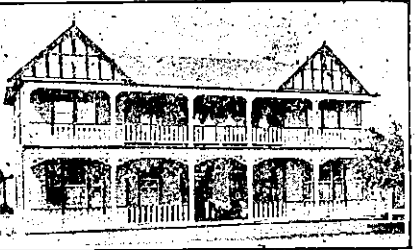
MISS HILDA,
ELECTRICAL VIOLET RAY SPECIALIST,
TOP FLOOR BANK N.Z. BUILDINGS.
MRS. M. O'CONNOR, Matron in Charge.



MOUNT COOK, The Place for a Holiday.

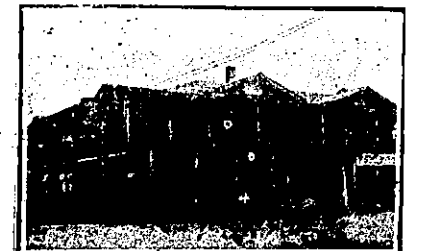
ALL PARTICULARS FROM—
THE MOUNT COOK MOTOR CO., LTD.,
TIMARU, FAIRLIE, AND QUEENSTOWN.
Agents: Government Tourist Department and Thos. Cook and Sons.

"THE WAVERLEY" Private Hotel
ROTORUA.



Just Outside Main Railway Entrance, to Right.
FIRST-CLASS ACCOMMODATION FOR TOURISTS AND TRAVELLERS.
EXCELLENT CUISINE. ALL TRIPS ARRANGED. Cook's Coupons Accepted.
TARIFF, 8s. PER DAY, 45s. PER WEEK.
E. CORY Proprietor
Phone 242.

The Leading Hotel is - - -
Hotel Langmuir,
TAUMARUNUI.



(Right opposite Station.)
Heated Rooms, Hot and Cold Water in Bedrooms. Electric Light. Modern Service in all Departments. Commodious Sample Rooms.
A. J. LANGMUIR Proprietor.
P.O. Box 81. Phone 92.