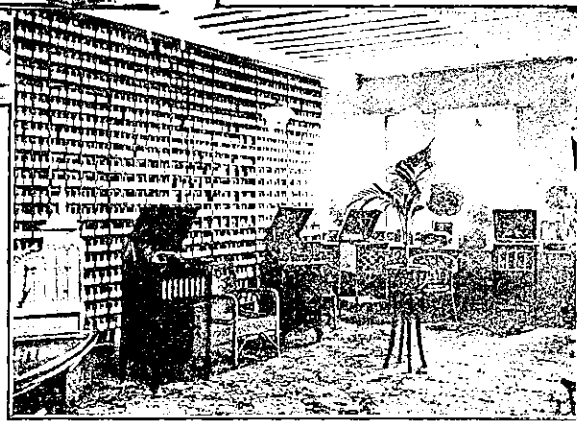
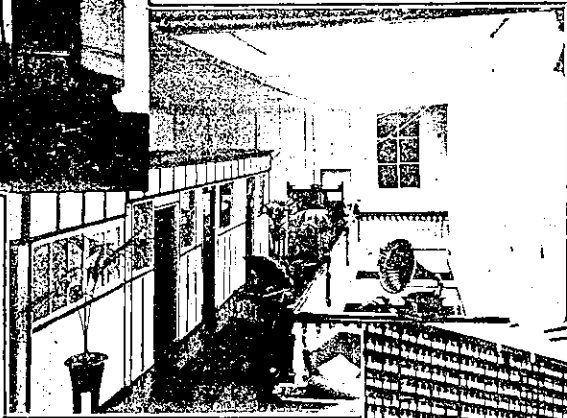


EADY'S

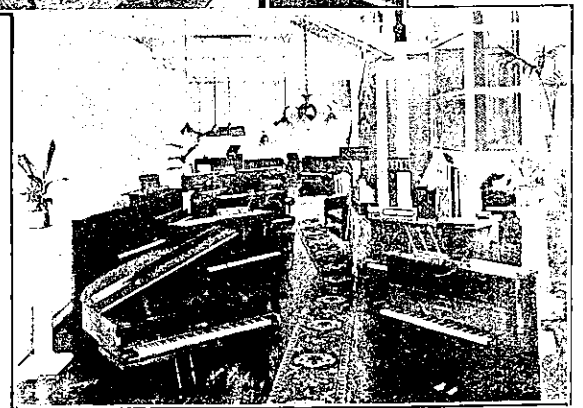
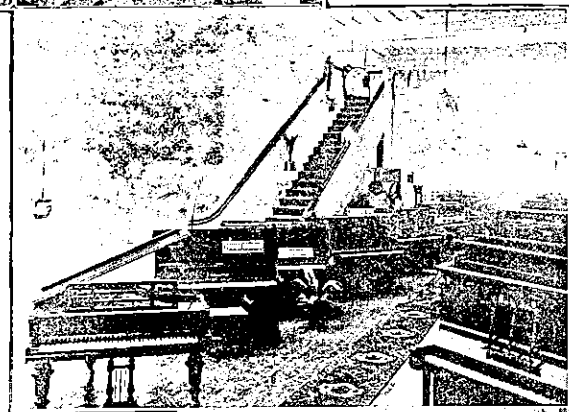
SERVICE
SATISFIES
EVERYBODY.



SINCE Established in 1884, this well-known business has developed in all branches, and now the House of Eady are able to offer a public service which compares more than favourably with any in this or other countries. EADY'S Pianos, Organs and Gramophones are the New Zealand standard of super quality.

Extending its business into additional commodious premises in Queen Street, this year, has enabled the Firm to double its stocks of superior musical instruments, so that the very best showroom selection is guaranteed. Evidences of appreciation of the modern facilities offered are the increasing orders received from all parts of the Dominion.

EADY'S are Exclusive Agents for, amongst others, the famous British piano, the CHAPPELL, known as the Artists' choice. They also sell the popular BISHOP Piano, manufactured in Auckland by special skilled British workmen. EADY'S GRAMAPHONE DEPT. (incorporating Walker's Phoneries) is an up-to-date salon, where Columbia Grafonolas and the latest Records are available. A very fine locally perfected instrument is the EDITROLA, the construction of which has largely circumvented the needle noise. EADY'S are Agents for Canadian KARN Organs.



Eady's
Always
Denotes
Yeoman
'Service

Catalogues Posted Free.

EADY'S

Opposite His Majesty's Theatre,
162, Queen Street, or 15, Karangahape Road,

LEWIS R. EADY & SON, LTD.

AUCKLAND.

THE LEADING PIANO HOUSE.