

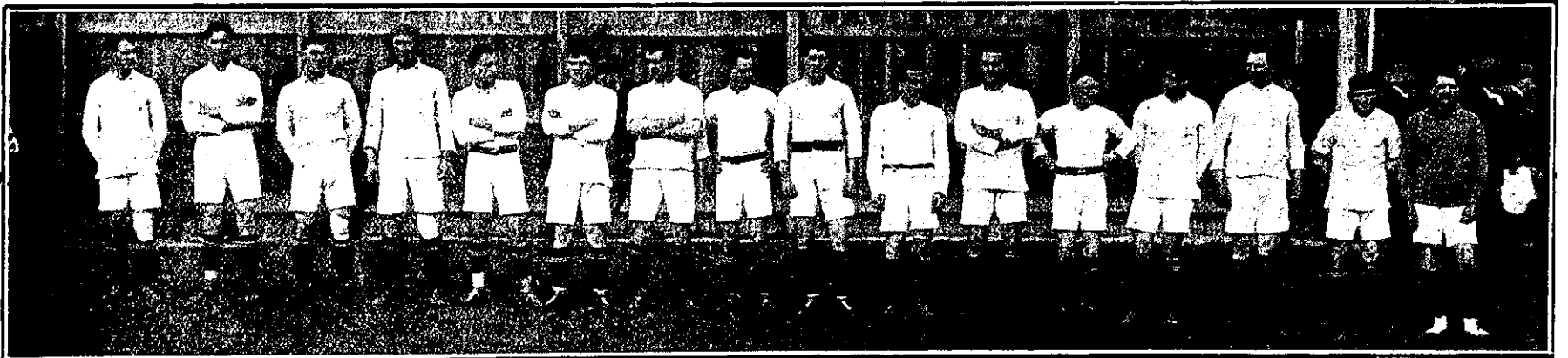
The North and South Island Rugby Football Match at Athletic Park, Wellington.



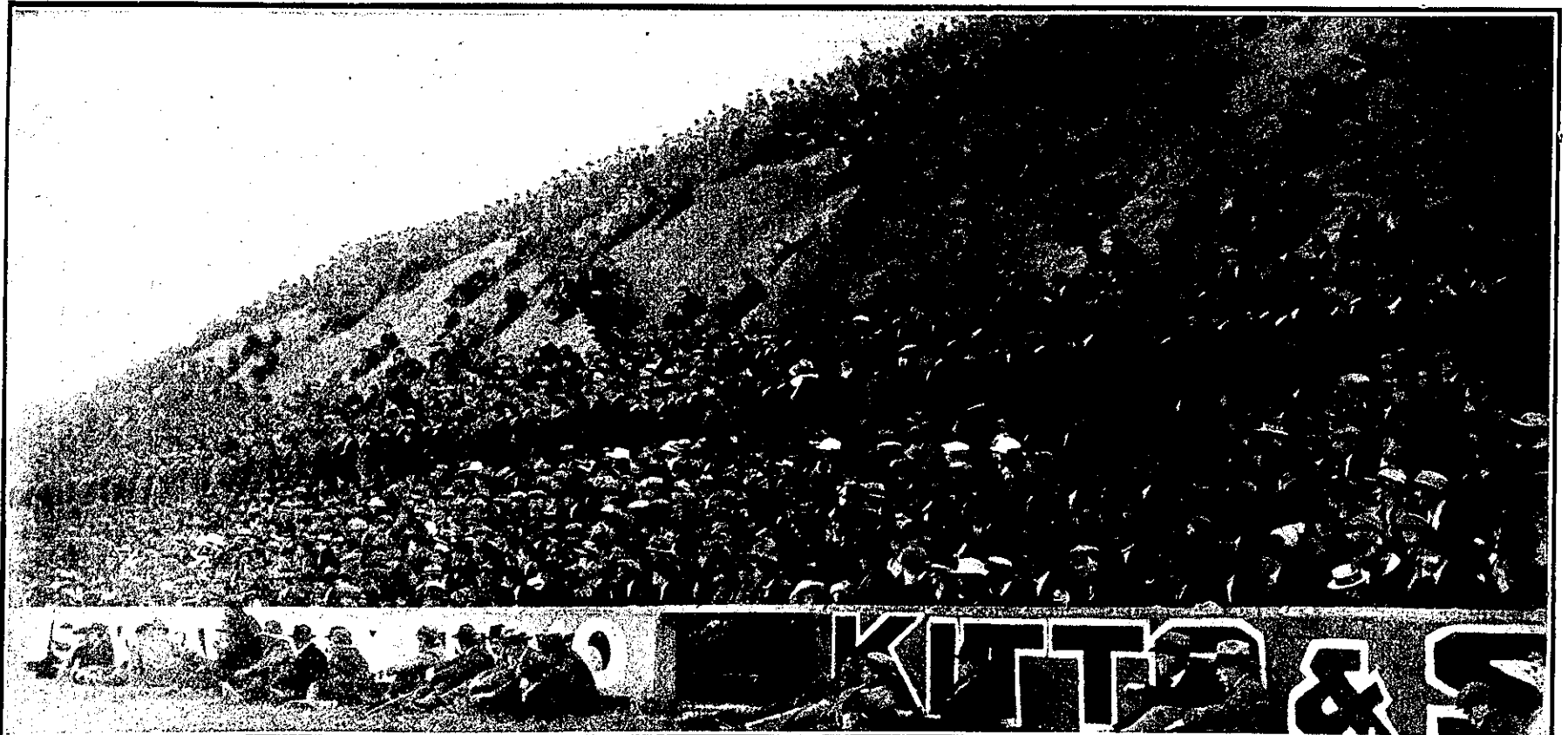
THE NORTH ISLAND RUGBY FOOTBALL REPRESENTATIVES, 1919, WHO DEFEATED THE SOUTH ISLAND BY 28 POINTS TO 11.



INTERESTED SPECTATORS AT THE NORTH V. SOUTH ISLAND RUGBY FOOTBALL MATCH ASSEMBLED AT THE NORTH END OF THE PARK.



MEMBERS OF THE SOUTH ISLAND TEAM, WHO SUFFERED DEFEAT AT THE HANDS OF THE NORTH ISLAND TEAM AFTER AN INTERESTING GAME.



VIEW OF THE TERRACE AT ATHLETIC PARK, WELLINGTON, SHOWING A SECTION OF THE LARGE CROWD OF 12,000 WHO WITNESSED THE MATCH BETWEEN THE RUGBY REPRESENTATIVES OF THE NORTH AND SOUTH ISLANDS, THE FIRST INTER-ISLAND GAME PLAYED FOR SIX SEASONS.