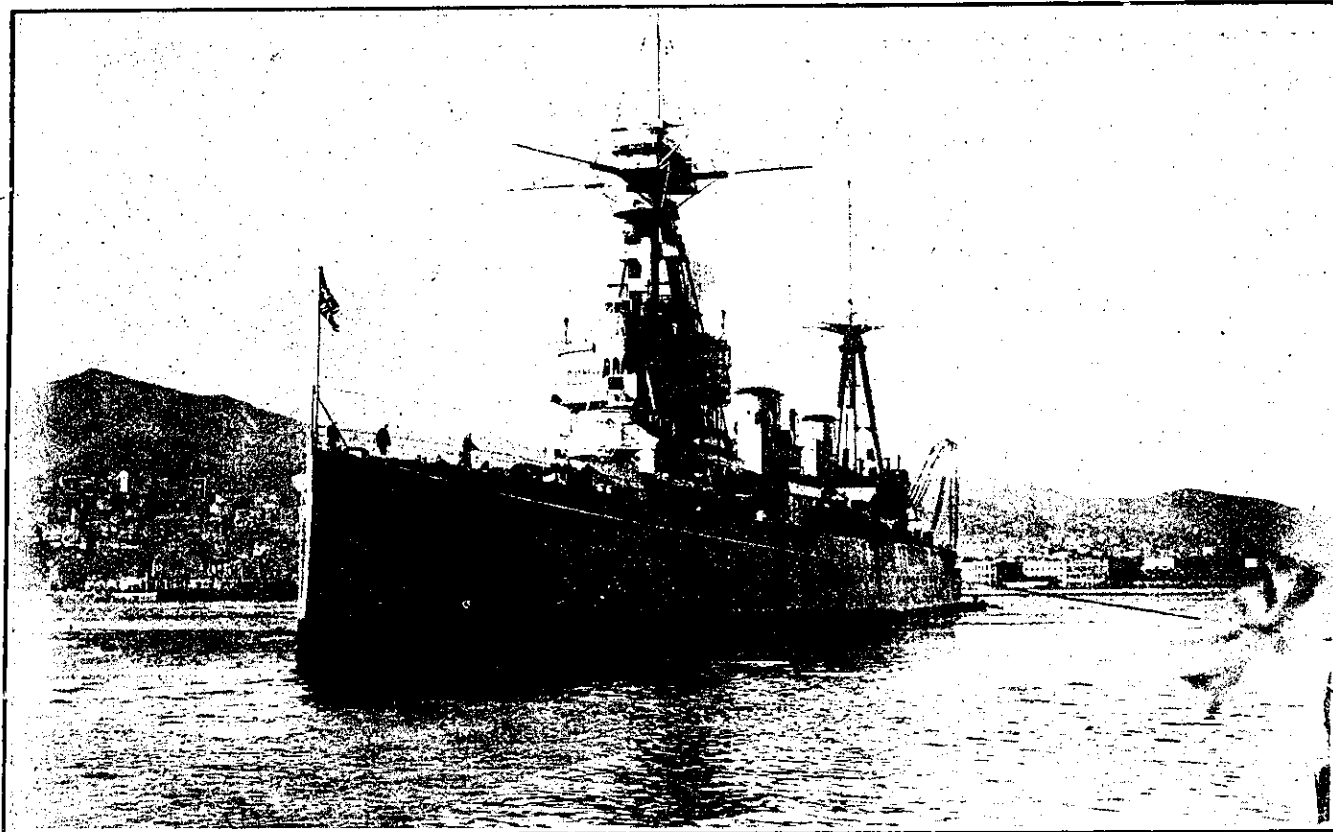


The Arrival of Lord Jellicoe at Wellington Aboard H.M.S. New Zealand



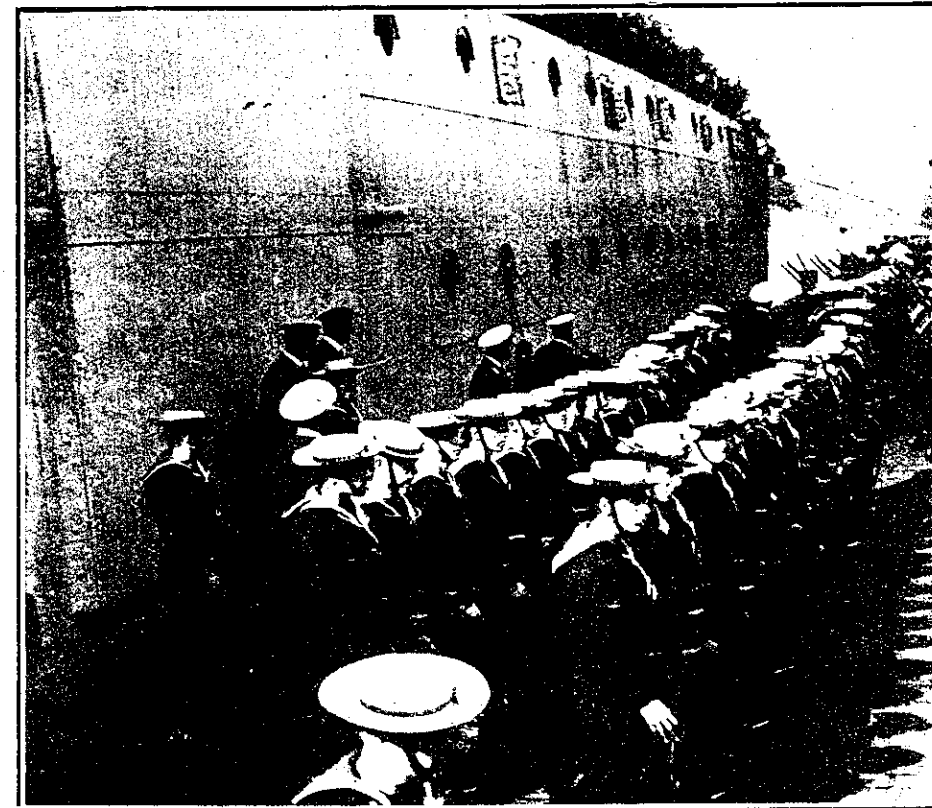
H.M.S. NEW ZEALAND PROCEEDING UP WELLINGTON HARBOUR ON WEDNESDAY (AUGUST 20), ON HER MAIDEN WORLD TOUR, TO BERTH AT THE QUEEN'S WHARF. The battle cruiser, which was presented by the people to the British Navy, and fought in the actions at Heligoland, Dogger Bank and Jutland, berthed at 9.30 a.m., her second visit to New Zealand shores being marked by a remarkable demonstration of enthusiasm from the many thousands which lined every vantage point on the wharves and eminences around Wellington.



ADMIRAL LORD JELlicoe (ON LEFT) AND STAFF RETURNING TO PAYING AN OFFICIAL VISIT TO THE GOVERNOR-GENERAL (EARL OF LIVERPOOL) TO pay his official visit to the Governor-General, Lord Jellicoe and Lord Jellicoe were tendered a civic reception in the



A SECTION OF THE CROWD ON THE QUEEN'S WHARF WATCHING THE BERTHING OF H.M.S. NEW ZEALAND.



BLUEJACKETS FROM H.M.S. NEW ZEALAND PREPARING THE MARCH TO WELLINGTON TO THE TOWN HALL.