

TIMARU.

SHAMROCK HOTEL
STAFFORD STREET, TIMARU.

Every comfort and attention offered to visitors. The very Best Liquors. Handy to Railway, Post Office, etc.

J. MALMANCHE Proprietor.

CENTRAL PRIVATE HOTEL
T I M A R U.

This old-established House has been renovated and refurnished; all modern conveniences. Handy to Railway, P.O. and business centre. Tariff, 25s. per week.

MRS. OWEN Proprietress.

THE DOMINION HOTEL,
T I M A R U.

The most modern and up-to-date Hotel in Timaru, overlooking Caroline Bay and the harbour. Everything new inside and out. Absolutely fireproof; electric light. Replete with every convenience; bathrooms (hot and cold) on every floor. Moderate tariff.

JOHN REILLY Proprietor.

TIRAU.

OXFORD ROYAL HOTEL,
T I R A U.

Situated between Cambridge and Rotorua. First-class accommodation for visitors, motorists and the travelling public.

W. F. BELL Proprietor.

UPPER HUTT.

PROVINCIAL HOTEL,
UPPER HUTT.

The Provincial offers all the comforts of a first-class home. The only hotel in the township. First-class stabling accommodation. Wines, Beers and Spirits of the very best. Letters and telegrams promptly attended to.

MRS. M. E. YOUNG .. Proprietress.

WAIKARI.

GREAT NORTHERN HOTEL,
W A I K A R I.

J. McTAGGART Proprietor.

The favourite house of motorists between Christchurch and Kalkoura. Opposite Railway Station. Everything of the best. All liquors true to label. Terms moderate.

WAIPAWA.

COMMERCIAL HOTEL,
W A I P A W A.

Private suites of apartments and every convenience for the accommodation of the public. Wines, spirits and beer of the best quality only. A first-class billiard table. Stabling and paddock accommodation.

W. PELLOW Proprietor.

WAIROA.

WAIROA Hawke's Bay.
The Commercial Travellers' Home. Visitors to Wairoa are assured of a hearty welcome at the

WAIROA HOTEL.

Everything of the very best. Excellent Cuisine and First-class Accommodation.
J. DICKSON Proprietor.
(Late of Masonic Hotel, Napier.)

WANGANUI.

WHERE TO STAY IN WANGANUI.
METROPOLITAN HOTEL,
Right Opposite Railway Station.

Most convenient Hotel in the town. Everything of the very best. Tariff, 8s. per day. A welcome to all.

W. H. WILSON Proprietor.

WELLINGTON.

EMPIRE HOTEL,
WELLINGTON, N.Z.

THE MOST CENTRALLY-SITUATED HOTEL IN WELLINGTON.

The Proprietor having Purchased the Freehold of this High-class Property is Sparing no Expense in Refurnishing and Re-decorating. Patrons can now rely on GOOD ATTENTION AND ACCOMMODATION.

TARIFF: 12/6 PER DAY.

'Phone 196. P.O. Box 335.

RICHARD DWYER Proprietor.

TRAMWAY HOTEL,
ADELAIDE ROAD, WELLINGTON.
MR. FRANK McPARLAND

Begs to inform his friends and the public that he has taken over this well-known Hotel. Visitors can rely on getting only the Best.

WELLINGTON.

ARCADIA PRIVATE HOTEL,

Lambton Quay, WELLINGTON.

Replete with Every Modern Convenience. Electric Light Throughout.

Containing 75 Rooms; Well Lit and Ventilated.

Central Position to Railway Trains and Post Office.

Telegrams and Letters Receive Prompt Attention.

Tariff Moderate.

MRS. E. COCKAYNE, Proprietress.

BARRETT'S HOTEL,

LAMBTON QUAY, WELLINGTON
(Opposite Bank of N.Z.)

Accommodation for 100 guests. Electric light throughout; electric lift. Night porter in attendance. Letters and telegrams receive prompt attention. Tariff 8s. per day, 45s. per week. 'Phone 1076.

D. DALTON Proprietor.

PIER HOTEL,

Opp. Queen's Wharf, WELLINGTON, and in the midst of the Principal Business Warehouses.

First-class accommodation. Everything of the very best. 'Phone 949. P.O. Box 755.

MRS. D. SULLIVAN .. Proprietress.

ARE YOU A MOTORIST?

Then You must Read the
NEW ZEALAND MOTOR AND
CYCLE JOURNAL.

Published Monthly. Price, Sixpence.
Of all Newsagents and Booksellers.

WELLINGTON.

ALBERT HOTEL,
WELLINGTON.

The home of the Dramatic Profession, Commercial and the Travelling Public. The Popular Hostelry. Tariff 9/6 per day; £2 10/- per week.

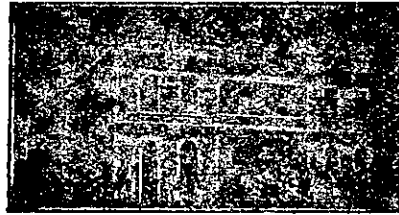
JAMES McDONALD Proprietor.

POST OFFICE HOTEL,
WELLINGTON.

Offers first-class accommodation at a moderate tariff. Excellent cuisine. Telegrams "Post Office Hotel, Wellington." 'Phone 2827.

MATTHEW MUIR Proprietor.

WHANGAREI.



WHANGAREI HOTEL,
WHANGAREI.

This fine house, just rebuilt in brick and furnished in up-to-date style, now offers unrivalled accommodation to the travelling public. Sample room. Hot and cold baths. Two minutes' walk from saltwater bathing place. Stabling second to none. Best wines, ales and spirits kept in stock.

SAMUEL McMAHON ... Proprietor.

J. J. McIVOR & SONS,
CABINETMAKERS AND
UNDERTAKERS,
Karangahape Rd., NEWTON.
(Next Post Office).

THE
Auckland Safe Deposit,

Corner of High Street and
Vulcan Lane : Auckland.

AN ABSOLUTELY SECURE PLACE for the safe-keeping of Debentures and other valuable and important Documents; also Jewels, Plate, etc.

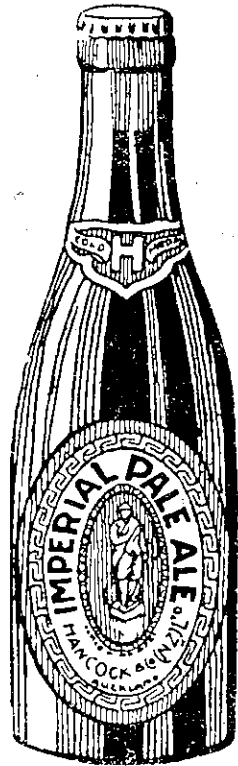
AN IMPREGNABLE STRONGHOLD, containing separate and distinct Safes, of various sizes, but with no two keys of the same pattern.

PROTECTED by HUGE DOORS of STEEL, controlled by automatic Time Locks.

CONSTRUCTED by the celebrated "Milners' Safe Co., Ltd." of London and Liverpool.

ABSOLUTELY UNASSAILABLE by fire.

ABSOLUTELY BURGLAR-PROOF.



ASK FOR
HANCOCK'S

"IMPERIAL" ALE
AND STOUT.

Always in PERFECT Condition.

"Quart of Good Ale is Dish for King."—Shakespeare—"Wine's Tale."

Bear, Delicious Beer—Beautiful, Bright, Seductively Sparkling, Perfectly Pure.

STAPLES' XXXX BEER

IS THE
BEST BEER BREWED

And may be obtained at almost all Hotels in Wellington and the East and West Coast Districts.

Call for STAPLES' BEER! Drink only STAPLES' BEER! And Touch No Other.

STAPLES & CO., Ltd.
Molesworth & Murphy Streets,
WELLINGTON.

HOTELS FOR SALE.

DWAN BROS., WELLINGTON

(Established 1880.)

HOTEL, Southern City, 4 1/2 years' lease. Trade, £340.

COUNTRY Hotel, North; 10 acres land. Takings £70. Price, £1200.

HOTEL, Rangitikei. Price, £3400.

HOTEL, Wellington, good trade; £2500.

TARANAKI, Tenant wanted; seven years' lease.

WANGANUI District. Price, £1000.

WAIRARAPA. Rent, £4. Price, £1850.

DWAN BROS.,

WILLIS STREET, WELLINGTON.

Drink

Peerless ALE

and Hope.

O. L. INNES & CO.
LIMITED,

HAMILTON.

Brewers, Bottlers and Aerated Water Manufacturers.

Branches: Hamilton and Waikato. Aerated Works: Taumarunui.

TAUPIRI COAL MINES (LTD.)

TAUPIRI COAL

THE BEST HOUSEHOLD COAL IN THE DOMINION.

CAN NOW BE OBTAINED FROM ALL COAL DEALERS IN WAIKATO.

All communications to be made to the Secretary.

J. FOTHERINGHAM, Secretary, AUCKLAND.

FOR QUALITY PRINTING, the kind of Printing that has a strong advertising pull and brings in new business to You, SEND TO THE N.Z. SPORTING & DRAMATIC REVIEW.



PEARSON AND CO., LTD., Sole Agents for Wellington District.