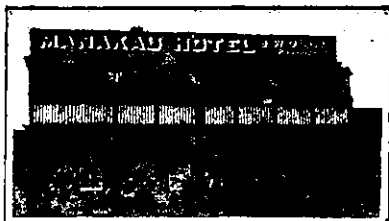


THE TOURIST AND TRAVELLER. WHERE TO STAY AND WHERE TO GO.

MANAKAU.



MANAKAU HOTEL,
MANAKAU, MANAWATU LINE.

J. W. DAVIES Proprietor
(Late of Albion Hotel, Shannon).

Manning's Prize Ales on Draught.
Everything true to label.

MARTINBOROUGH.

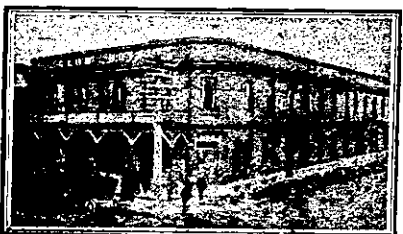


CLUB HOTEL,
MARTINBOROUGH.

The recognised Best Hostelry in Martinborough has been taken over by **Mr. C. J. Nelson**, formerly of the Wakatu Hotel, Nelson, and the Masonic Hotel, Waitara. Excellent accommodation for travellers. First-class cuisine. Everything of the very best. All Wines and Spirits true to label.

C. J. NELSON Proprietor.

MASTERTON.

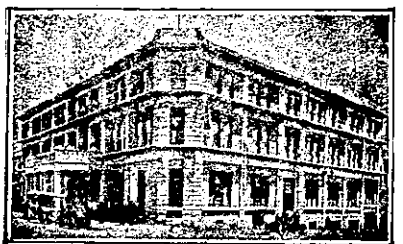


CLUB HOTEL,
MASTERTON.

HERMANN CRASS Proprietor
(Late of Arcadia Hotel, Wellington, the Wellington Club and the U.S.S. Co.)

First-class table. First-class sample rooms. Tariff, 9s. per day. Phone 57.

NAPIER.



THE CALEDONIAN HOTEL,
NAPIER.

This well-known Leading Commercial Hotel has recently been renovated, and is now under new management. A comfortable home. Tourists and travellers specially catered for. Central, convenient and refined. Only the Best Liquors Stocked.

A. C. HARRISON Proprietor.

PROVINCIAL HOTEL,
NAPIER.

THE LEADING COMMERCIAL HOTEL
IN NAPIER.

Now under New Management.

Central, Commodious, Comfortable.

Adjacent to Railway Station, Theatre and Marine Parade. The Provincial offers to Tourist and Travellers a Comfortable Hotel at a moderate tariff.

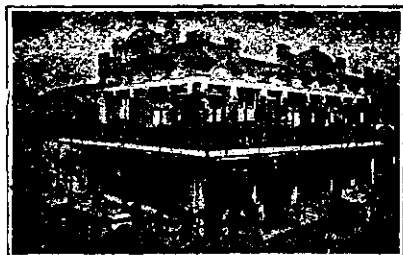
T. A. HEATH Proprietor.
(Late Assistant Manager Masonic Hotel.)

CLARENDON HOTEL,
NAPIER
(Opposite Post Office).

Renovated and refurbished throughout and now open to visitors. Speight's Ale; the Best of Wines and Spirits. Telephone 690. P.O. Box 222.

H. T. HANLON Proprietor.

NAPIER.



CENTRAL HOTEL,
EMERSON STREET, NAPIER.
Now the Leading Commercial and Family Hotel in Napier. Entirely renovated. Finest liquors. All modern conveniences. Telephone 286.

WM. E. HILL Proprietor.

NELSON.

PROVINCIAL HOTEL,
BRIDGE STREET, NELSON.

J. J. F. J. BAXTER Proprietor.

This Popular Hostelry has been taken over by **Mr. Baxter**, long and well known to the travelling public as steward of the s.s. Nikau. All wines and spirits guaranteed true to label. Harley's Prize Ales on draught.

TASMAN HOTEL,
THE PORT, NELSON.

This Popular Hotel, once known to many travellers and visitors to Nelson and West Coast as the "Ship," is now thoroughly renovated, remodelled and refurbished. One quality for everything—the Best. Dodson's Prize Ales and Stout always obtainable.

W. S. HORROCKS Proprietor.

PIER HOTEL,
PORT, NELSON.

Under New Management. Visitors and the travelling public will find everything in the way of comfort and attention. All meals and beds 1s. 6d. Cups of tea obtainable at any hour. Dining-room under the personal supervision of **Mrs. Diamanti**. Phone 343.

C. L. DIAMANTI Proprietor
(Late of the West Coast and Marlborough Goldfields).

NEW PLYMOUTH.

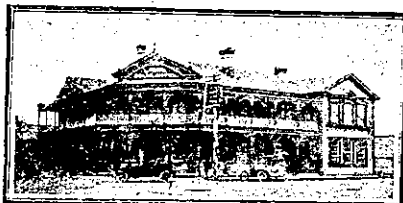
WHERE TO STAY IN NEW PLYMOUTH.

WHITE HART HOTEL,
NEW PLYMOUTH, N.Z.

Leading Commercial and Tourist House.

H. S. BROOKMAN Proprietor.

NGARUAWAHIA.



DELTA HOTEL,
NGARUAWAHIA.

This Hotel is replete and up-to-date with all modern conveniences and offers First-class Accommodation for Tourists and the Travelling Public. The only free house in Waikato. Only the Best Brands of Liquors Stocked.

L. DUNN Proprietor.

OMARU.

NORTHERN PRIVATE HOTEL,
OAMARU.

Corner Tyne and Wansbeck Streets, OAMARU.
Now under the proprietorship of **Mrs. Harvey**, late of the Star and Garter. Visitors are assured of every comfort and attention. Cuisine unsurpassed. Moderate tariff.

MRS. M. HARVEY Proprietress.

OMAHU.

FERNHILL HOTEL,
OMAHU, HAWKE'S BAY.

Sportsmen should be acquainted with the fact that good fishing and deer-stalking is plentiful around this district. First-class accommodation for tourists and the travelling public. Tariff 8s. per day. Phone 914.

W. EVERETT Proprietor.

OTAKI.

CENTRAL HOTEL,
OTAKI.

Most popular house of call in the town. All wines, spirits and ales true to label. Speight's Ale on draught. Tariff moderate. Ring Phone 3 for accommodation. P.O. Box 19.

J. D. HOWELL Proprietor.

PALMERSTON NORTH.

THE CLUB HOTEL,
PALMERSTON NORTH.

Stands on two acres of land; frontage 165ft.; promenade balcony; contains 60 bedrooms, private sitting-rooms and 12 sample rooms. The appointed house for the Association of N.Z. and Australian Commercial Travellers.

H. B. TUCKER,
Proprietor and Owner.

PANMURE.

PANMURE HOTEL,
PANMURE,
AND DYER'S HALL, PANMURE.

HENRY H. DYER Proprietor.

Wines and Spirits of the Best Brands only stocked. A hearty welcome always awaiting old friends and new faces.

PATEA.

THE ALBION HOTEL,
PATEA.

First-class accommodation for tourists, families and travellers. Wines, Ales and Spirits of the Best.

J. A. COOGAN Proprietor.

PETONE.

CENTRAL HOTEL,
JACKSON STREET, PETONE.

Under New Management. This well-known and popular house of call has been taken over by **Mrs. H. Maddock**, late of Blenheim, who extends a hearty welcome to her many Marlborough friends. All wines, spirits and liquors true to label.

MRS. H. MADDOCK .. Proprietress.

RICHMOND.



WHITE HART HOTEL,
RICHMOND.

(Under New Management.)
J. HAWTHORN Proprietor.
(Late of Puponga.)

This well-known Hostelry, on the Main Nelson-West Coast Road, has been taken over by **Mr. Hawthorn**, who extends a hearty welcome to tourists and travellers. Favourite stopping place for motorists. All wines and spirits true to label. Harley's Prize Nelson Ales on draught.

ROTORUA.

THE GEYSER HOTEL,
ROTORUA.

Golf Links Adjoin the Hotel.

SITUATED AT WHAKAREWAREWA,
THE AMPHITHEATRE OF

THE SPOUT BATH,

Free to Guests. Famous for its Extraordinary Cures of Rheumatism, Neuralgia, Lumbago, Sciatica, Kidney, Liver and other Complaints.

Five minutes from Rotorua. Bus Free from Station to Hotel for Guests.
Tariff from 12s. per day.
From £3 10s. per week.

GRANDE VUE,
ROTORUA.

Situated centrally, with balconies overlooking the Beautiful Government Gardens, this House is without a rival in Rotorua.

The Government Bath Buildings, in the same grounds, are but two or three minutes' walk from the house, thus affording special bathing facilities to patrons.

GRANDE VUE has recently been taken over by

MR. GEORGE BROWN,

in conjunction with **MRS. BEES**; both for many years in charge of the Grand Hotel, Rotorua. Visitors to Rotorua can rely on finding their every comfort supplied at Grande Vue.
Tariff, 9s. per day; £2 15s. per week.
Telegrams: "Grande Vue, Rotorua."

Thos. Cook and Son, Booking Agents.

RIVERTON.

WHERE TO STAY IN RIVERTON.
RAILWAY HOTEL,
Directly Opposite Railway Station.

Ideal Hotel for a holiday at the sea side. Everything of the very best.

CHAS. DE CLIFFORD .. Proprietor.

SANSON.

JUNCTION HOTEL,
SANSON.
MRS. Z. L. BUCKERIDGE,
PROPRIETRESS.

Wanganui to Wellington favourite stopping place for motorists and travellers. Accommodation paddocks for stock. Splendid duck-shooting in vicinity, big bags to be got. Everything of the very best. A hearty welcome to all. Phone No. 6. P.O. Box 7.

SHANNON.

ALBION HOTEL,
SHANNON.

The Popular house of call. New, commodious; electric light. Most up-to-date on the Manawatu line. First-class accommodation. Speight's Ale on draught. All wines and spirits true to label. A welcome to all. Tariff, 8s. per diem. Phone 14.

W. McKEGG Proprietor
(Late of Otaki.)

TAITA.

TAITA HOTEL

TAITA, LOWER HUTT, WELLINGTON.

MRS. C. M. CAMPBELL, Proprietress

Excellent table. Travellers specially catered for. The Soldiers' Home, in close proximity to Trentham Camp. All wines and spirits true to label. Staples' Prize Ales on draught. Easily reached by motors from Wellington and bus from Lower Hutt Railway Station.

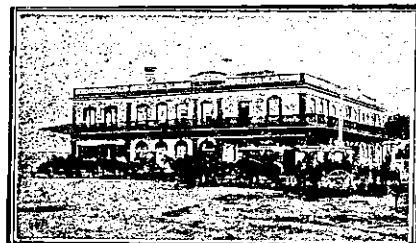
TAKAKA.

GLOBE HOTEL,

WAITAPU, TAKAKA DISTRICT.
Ranks among the First-class Hotels throughout the Province, and is a favourite resort for all tourists, commercial men and travellers generally. Telephonic and telegraphic connection on premises. All kinds of vehicles and horses for hire at shortest notice. Best Brands only of Ales, Wines and Spirits dispensed. A trial solicited. Dodsons and Sons' Ales on draught.

JAMES PAGE Proprietor.

TAURANGA.



STAR HOTEL,
TAURANGA.

The Leading Commercial Hotel in the Bay of Plenty. Best accommodation. Excellent cuisine. Hot and cold baths. Telegrams: "Star, Tauranga." Phone 6. P.O. Box 21.

A. BROWN Proprietor.

THAMES.

SALUTATION HOTEL,
MARY STREET, THAMES.

HARRY BROWNLEE ... Proprietor.

ONLY SPEIGHT'S ALE ON DRAUGHT

Best Ale in Town.

POST OFFICE HOTEL,
MARY STREET, THAMES.

Visitors will find here excellent accommodation and the very best Wines, Spirits and Ales.

MRS. W. MORRISON .. Proprietress.

TIMARU.

EXCELSIOR HOTEL,

TIMARU.
EXCELLENT ACCOMMODATION.
BEST WINES AND SPIRITS.
W. FORD Proprietor.

WAIHO FORKS HOTEL.
UNSURPASSED ACCOMMODATION
AND ATTENTION.
B. TAVENDALE Proprietor.

N.Z. MOTOR & CYCLE JOURNAL.
Published Monthly.

Of all Newsagents and Booksellers.
PRICE, 6d.