

The rearing of pheasants on Quail Island (Lyttelton) was attempted last season. There are no natural enemies of the birds on the island, and food and cover are plentiful. Ten pheasants were hatched out, but all except one cock were poisoned. The blame, it was stated at the meeting of the Acclimatisation Society, rested upon the German prisoners. The society is taking steps to obtain five hen pheasants, and will support another effort to raise pheasants on Quail Island.



FARMERS, PASTORALISTS AND SPORTSMEN. — Ask Clement Wragge about the weather; six months ahead, 5/6; twelve months, 10/6. Address: Wragge "Institute," Birkenhead.

WYNYARD ARMS HOTEL. Corner Wellesley St. and Symonds St., AUCKLAND.

MRS. R. WELLS (late of the Victoria Hotel, Petone) wishes to notify her friends and the public that she has taken over the above well-known house, which has been renovated and refurbished and brought right up to date. Permanent boarders by arrangement. Telephone 1327.

NAPIER (THE BRIGHTON OF NEW ZEALAND.)

—STARTING POINT FOR—

**LAKE TAUPO**

(Hot Lake District)

NAMED THE ANGLERS' PARADISE.

8 HOURS MOTOR FROM NAPIER.

Napier to Taupo is undoubtedly one of the most interesting and romantic scenic routes in the Southern Hemisphere, and for rugged mountain landscape is unsurpassed.

A motor car leaves Napier on Thursday at 8 a.m., lunching at Tarawera, arriving Taupo 4 p.m. Taupo depart Friday 8 a.m., Tarawera noon, arrive Napier at 4 p.m. Motor service 1st December to 30th April.

The mail coach leaves Napier on Monday 6.30 a.m., staying at Tarawera overnight, reaching Taupo about 4 p.m. Taupo depart Wednesday 7 a.m., arrive Napier Thursday, about 4 o'clock, December 1st to April 30th. May 1st to November 30th coach leaves Taupo Thursday.

Fares per coach, Napier to Taupo, Single, £2 10s.; Return, £4. Fares per motor car, Napier to Taupo, Single £3 10s.; Return, £6.

Full particulars at Government Tourist and T. Cook and Sons.

H.B. MOTOR COMPANY, LIMITED, PROPRIETORS, NAPIER.

**MARTIN'S APIOL & STEEL FOR LADIES PILLS**

A French Remedy for all Irregularities. Thousands of ladies keep a box of Martin's Pills in the house, so that on the first sign of any irregularity of the system a timely dose may be administered. Those who use them recommend them, hence their enormous sale. All Chemists and Stores, or post free 5s. MARTIN, SOUTHAMPTON, ENGLAND.

**J. A. WHITE, CASH GROCER,**

212, Symonds Street : Auckland.

\*\*\*\*\*

A few of our many Low-priced Lines :

OUR SUCCESS DEPENDS ON YOUR SATISFACTION. STUDY THE FOLLOWING PRICES AND SEND US YOUR NEXT ORDER:

70lb. Bag Sugar	15 2	Large Packet Creamota	1 10
100lb. Bag Flour	17 9	Dozen British Wax Candles	11 6
25lb. Bag Oatmeal	8 10	Amber Tips Tea (in 5lb. lots), per pound	2 2
25lb. Bag Rolled Oats	10 9		

Also a Special Blend of Ceylon Tea at 2/- lb., which we can highly recommend. Teas are advancing.

We have all kinds of Yates' New Season Seeds at 3d. packet. Beans and Peas, 6d. packet.

Choice Prunes, 3lbs.	1 6	Taniwha Soap (bar)	1 3 1/2
Highlander Condensed Milk, dozen	8 6	Velvet Soap (bar)	0 9
(Unsweetened same price)		Sunlight Soap (box, 3 bars)	1 5
Granose Biscuits, 3lb. pkt.	3 3	Hudson's Extract, 6 packets	1 0
		Lifebuoy Soap (cake)	0 4

OTHER PRICES GIVEN ON APPLICATION.

All Goods Delivered Free to Rail or Boat.

If any goods are not satisfactory, return at our expense.

(CASH WITH ORDER.)

**J. A. WHITE, 212, Symonds Street, AUCKLAND.**

**Waitomo Caves Hostel.**

Waitomo, Ruakuri, and Aranui Caves,

Reached by Daily Train from

Wellington or Auckland

THE Government Hostel at Waitomo is situated in a position from which the caves can be conveniently visited, and is connected by Telephone with the local Post and Telegraph Office.

TARIFF

Adults - 10s per Day. Single Meals 2s 6d each. Children between the ages of three and 12 half rates.

Obtain your tickets from the Govt. TOURIST BOOKING BUREAU

Wellington, corner of Grey and Featherston Sts., opp. G.P.O.

Auckland: Custom Street. NO EXTRA Charge for Booking.

**JAMES' TEMPERANCE HOTEL, WHANGAREI.**

First-class accommodation. Excellent Cuisine. Every home comfort. Stabling and paddocking. Horses for hire.

H. J. JAMES ..... Proprietor

**Commercial Hotel, THE SQUARE, PALMERSTON NORTH.**

This well-known Hotel is the Rendezvous for Commercial and Visitors.

Replete with every Comfort. Cuisine a Special Feature. Wines and Liquors of the Highest Quality.

THOMAS CHILDS - Proprietor

NEW ZEALAND'S ROLL OF HONOUR—In Memoriam Cards, with Soldiers' Portrait, similar to that in "Sporting Review"—ARTHUR CLEAVE AND CO., LTD., High St., Auckland.

**SULPHOLINE**

THE FAMOUS LOTION

Quickly removes SKIN ERUPTIONS, swelling, A SIBYAN COMPRESSION.

The highest quality of the most effective medicine for skin eruptions, itching, chafing, chancres, hemorrhoids, etc., by applying.

**SULPHOLINE**

which renders the skin spotless, soft, clear, supple, and beautiful.

FOR 42 YEARS

**SULPHOLINE**

HAS BEEN THE REMEDY FOR

Itchings, Eruptions, Swellings, Chafing, Chancres, Hemorrhoids, etc.

Sulpholine is prepared by the great chemist, J. E. M. & Co., Ltd., Beckenham, Kent, London, S.E. 11, England, and can be obtained from any chemist and druggist throughout the world.

Quickly removes the effects of sunburn.

**"LOUVRE"**

Parker & Helme, HIGH-CLASS DRESSMAKERS,

Plain and Fancy Blouses. Underwear of every description.

Address: 27, WELLESLEY ST. W. (above Opera House).

**Masonic Hotel . . . GIBBORNE.**

THE LEADING COMMERCIAL HOTEL IN GIBBORNE.

The above Hotel has been rebuilt, and is now open to guests. Visitors and travellers will find everything new, and can rely upon getting every comfort and attention. Best range of sample rooms in the Dominion.

MRS. E. M. PARKER, Proprietress.

**ADELAIDE HOUSE,**

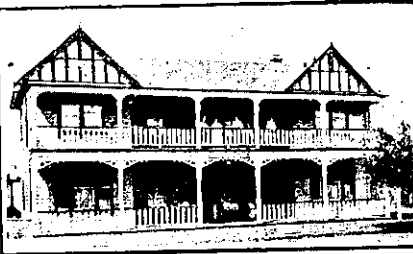
(Under Entirely New Management.)

101, HOBSON STREET, AUCKLAND.

Good accommodation for visitors at a reasonable tariff; 4s. 6d. per day, 28s. 6d. per week. All meals 1s. 6d.

N. ALACH ..... Proprietor.

**"THE WAVERLEY" Private Hotel ROTORUA.**



Just Outside Main Railway Entrance, to Right.

FIRST-CLASS ACCOMMODATION FOR TOURISTS AND TRAVELLERS.

EXCELLENT CUISINE. ALL TRIPS ARRANGED. Cook's Coupons Accepted.

TARIFF, 8s. PER DAY, 45s. PER WEEK.

E. CORY ..... Proprietor. 'Phone 242.

**The Leading Hotel is . . . Hotel Langmuir,**

TAUMARUNUI.

(Right opposite Station.)



Heated Rooms, Hot and Cold Water in Bedrooms. Electric Light. Modern Service in all Departments. Commodious Sample Rooms.

A. J. LANGMUIR ..... Proprietor.

P.O. Box 81. 'Phone 92.

WHEN SELLING YOUR FURNITURE CONSULT

P. W. DOUGLAS,

Who will Sell for you and get the Big Prices. Or, if you prefer, will Buy Straight-out for Cash.

DOUGLAS & CO., AUCTIONEERS AND VALUERS, VICTORIA ST. EAST, AUCKLAND. 'Phone 388A.

Visitors to Wanganui.

**HOTEL BRAEBURN, Anzac Parade, WANGANUI,**

Is Replete with every Modern Convenience, and Recognised as one of the Leading Private Hotels in the Dominion. Magnificent Views from the balcony of River, Sea and Countryside.

An Ideal Holiday Home. Motor Garage, Croquet Lawn, Electric Light.

Four Minutes from Train and Steamer

S E E

**CLEMENT WRAGGE'S**

LOVELY

**TROPICAL GARDENS.**

"W A I A T A,"

BIRKENHEAD, AUCKLAND.

A South Sea Paradise, an Indian Jungle. Glorious Palms, Bananas in Actual Fruit, etc.

Also Wragge Institute, Museum, Art Gallery.

Open Daily: 10 to 6. Admission, 1/1. Morning and Afternoon Tea Obtainable. Telescope, Astronomical Evenings and Radium by Appointment.

The Greatest Object Lesson in all the Dominion.

**BRISCOE & COMPANY, Ltd.**

Wholesale Hardware Merchants,

AUCKLAND, WELLINGTON, CHRISTCHURCH, DUNEDIN & INVERCARGILL

**MODERN FIREPLACES**

ARCHITECTS and Builders are invited to bring their clients to inspect our New Assortment of Modern Slabbed Tile Fireplaces from £3 10s. each, complete. A wide range of colours in stock, harmonise with the latest furnishings and interior finishings.