

THE TOURIST AND TRAVELLER. WHERE TO STAY AND WHERE TO GO.

The Canterbury Central Co-operative Dairy Company, Ltd.

ADDINGTON : Christchurch, N.Z.



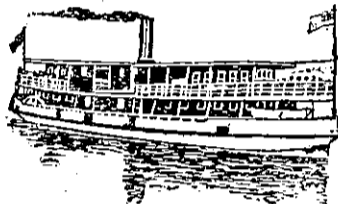
Manufacturers of

Fern Leaf

—AND—

Moa Brand Butters

Average Yearly Output 1000 Tons.



THE DEVONPORT STEAM FERRY COMPANY, LIMITED.

STEAMERS: Ngairo, Peregrine, Albartross, Kestrel, Condor, Sparrowhawk, Goshawk, Eagle, Osprey, Britannia, Victoria, Takapuna, Lyttelton, Pelican, Young Bungaree, Kawau, Ruru, Merlin.

Steam Ferry (Passenger and Vehicular) Services to the Suburbs of

DEVONPORT, NORTHCOTE, BIRKENHEAD AND CHELSEA.

Steamers at short intervals daily from 6.30 a.m. to 11.40 p.m. Also all-night Service to Devonport.

Daily Service to St. Helens Bay.

Excursion steamers run to the popular resorts—St. Helens Bay, Lake Takapuna, Motutapu, Motukorea, and Pine Island, as notified in the Daily Papers. Steamers on hire for excursions of any description and for extended trips. Comfortable cabins; every convenience. Phones 246 and 234.

ALEX. ALISON Manager.

RIVERTON WOOD & COAL DEPOT,

PALMERSTON STREET, RIVERTON.

JOHNSTONE & WEBB

(Late C. E. Johnstone.)

GENERAL CARRIERS, FORWARDING AGENTS AND UNDERTAKERS.

Drags and Buggies for hire. Agents N.Z. Express Co. Arrangements made for Motor Launch Excursions up the Pourikinna River. Phone 28. P.O. Box 39.

Facts Speak! Over 1100 men "reported sick" at the Oringi Camp (no "Fluenzol"), as against only 38 at Takapau Camp during a similar period. An officer of the Defence Dept. writes: "There is no doubt that the low rate of sickness (despite the severe weather) at the Takapau Camp was largely due to the quantity of 'Fluenzol' consumed by all ranks." Gargle for Throats; Snuff up for Colds in the Head; Swallow for Influenza. Insist on "Fluenzol." 1/6 and 2/6.

TO MAINTAIN ORDER

in the digestive system is an important measure in securing the boon of Permanent Good Health. Only when your digestion is sound can you be physically at your best. It behoves everyone, therefore, who estimates Good Health at its proper value, to take care that those important organs—the stomach, liver and bowels are kept in a high state of efficiency. Probably the best medicine known for maintaining the organs of digestion in satisfactory order is

BEECHAM'S PILLS.

Prepared only by THOMAS BEECHAM, St Helens, England.

Sold in boxes, labelled price 10½d (36 pills), 1/1½ (56 pills) & 2/9 (168 pills).

NEW ZEALAND INSURANCE COMPANY LIMITED.

Fire Marine Accident

Subscribed Capital £1,500,000

Paid up Capital and Reserves £1,425,000

THE COMPANY'S A C M E POLICY SPELLS S-E-C-U-R-I-T-Y

and the Prospectus allows for ACCIDENT, DISEASE, DISABILITY, and in addition provides for a TEN YEAR ANNUITY in the event of TOTAL DISABILITY or BLINDNESS or PARALYSIS by DISEASE.

H. P. KISSLING, Manager. AUCKLAND BRANCH.

IMPORTED MINIATURE POMERANIANS AT STUD.



BLEAR HOUSE DON, wolf-shaded sable, 4lbs. weight. Big winner in England, and sires winners in every litter. Also, **REMUERA GOLD**, just imported from England, richest orange dog in New Zealand, 4lbs. weight, siring orange puppies with big coats. Fee to both dogs, £5 5s. each. **Special Offer**—To let Fanciers test our Stud Dogs, first bitch from any fancier, £3 3s. to each dog. Puppies guaranteed; money back if not perfectly satisfied. Apply—

F. HOUSE,

142, ADELAIDE RD., WELLINGTON.

Pekingese Puppies for sale, from £10 10s. Only Best Imported Stock kept. Apply—

HERBERT CROMPTON,

REMUERA KENNELS,

34, MEIN ST., WELLINGTON SOUTH.



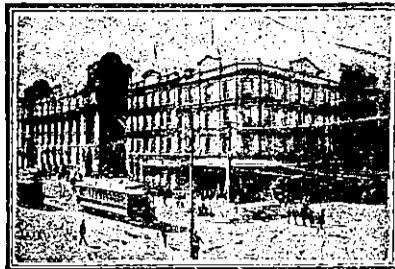
Make YOUR HAIR beautiful

Nature intended your hair to be beautiful. When the natural oil which protects and beautifies the hair is deficient, it must be supplemented. Otherwise the hair will become dull, dry, and brittle; it will split at the ends and prematurely fall out. If you wish to make it beautiful, you must rub into the scalp

ROWLAND'S MACASSAR OIL

which flows quickly to the roots and affords the nourishment essential to the growth of luxuriant hair. Prepared in a golden tint for fair hair. Sold by Stores, Chemists, Hairdressers, or ROWLANDS, 67, HATTON GARDEN, LONDON. Great care must be taken to ask for Rowland's Macassar Oil, and avoid cheap, spurious imitations.

AUCKLAND.



The.....

Waverley

HOTEL and RESTAURANT
QUEEN STREET, AUCKLAND.

European Plan.

PASSENGER AND GOODS' SERVICE.



HODSON'S PIONEER WANGANUI - MARTON MOTOR SERVICE.

Cars leave Marton on arrival of all express trains from Auckland. Cars leave Wanganui at 6.45 a.m. and 3.30 p.m., connecting with all expresses to and from Auckland. Fares, 10s. Wire or write

J. HODSON,
Parkville Private Hotel,
WANGANUI.

WHEN IN DUNEDIN
Ring Phone 196

FOR TAXIS AND TOURING CARS. Open Day and Night for Convenience of the Motoring Public.

BACON'S BACON'S MOTOR AND LIVERY STABLES,

KING STREET, DUNEDIN.

GEORGE JEFFS Manager.

OTAWHAO STABLES.

TAKAPAU, HAWKE'S BAY.

MOTOR CAR FOR HIRE.

Horses, Gigs, Coaches, Drags and Buggies for Hire. Night groom always in attendance. Phone 36, Takapau.

A. W. THOMSON Proprietor

NELSON.

W. J. PHILLIPS,

43, CAMBRIA STREET, NELSON.

Car for Hire at any hour. All steamers and trains met. Terms Moderate. Phone 382.

MOST LUXURIOUS CAR IN NELSON.

RAILWAY STABLES AND MOTOR GARAGE,
BRIGHT STREET, GISBORNE.

The above stables, centrally situated, are now under entirely new management. Visitors to Gisborne can be met on arrival with the Finest Turnout in the district. Special facilities as a motor garage. Groom in attendance all night. Phone 548.

J. P. GORDON Proprietor.

KELLY'S STABLES,

KING STREET, OPOTIKI.

W. B. KELLY Proprietor.

General Carrier and Livery Stable-keeper. Agent for N.Z. Express Co. Ltd. Coaches or cars leave for Motu every Wednesday and Saturday. Motor cars for hire day and night. Telegrams, "Kelly's Stables." Phone 22.

CORONATION STABLES AND GARAGE,

ELTHAM.

Tourists and visitors conveyed to or round Mt. Egmont. Horses, gigs, etc., for hire. Good stabling accommodation. Car meets all trains. Jackson car for hire. Telephones: Stables 16, Private Residence 141.

C. A. COLES Proprietor.

DOMINION LIVERY STABLES,
WAIPAWA.

H. D. LIMBRICK, Proprietor. Cabs, Gigs, Buggies and Saddle Horses always on Hire.

Travellers' Samples and Theatrical Goods Carted. Cab Meets all Trains. Motor Cars on Hire, Day and Night. Telephone. No. 39.

SADDLE AND HARNESS MAKER.

Trotting Boots, Booties, Hopples and Bloomers a Specialty.

F. KNIGHT.

JUST OPENED UP A NEW LINE OF RACING HARNESS, ENGLISH, AMERICAN AND COLONIAL LEATHER.

Shipment of American Sulkies Just Arrived.

Estimates Given.

MANUKAU ROAD, FARNELL.

Branch Establishment: NEWMARKET.



THISTLE HOTEL.
QUEEN STREET, AUCKLAND.

JAMES MAHONEY desires to intimate that he has taken over the above well-known house, and that patrons will meet with every comfort and convenience. Speight's XXX Ale on draught.

OCCIDENTAL HOTEL,
VULCAN LANE,
AUCKLAND.

MRS. N. LYNCH Proprietress
(Late of Clarendon and City Hotels, Auckland.)

AKAROA.

MADEIRA HOTEL,
LAVAUD STREET, AKAROA.

W. H. PIPER (late Christchurch) wishes to inform the public of Akaroa and surrounding bays of the Peninsula and Christchurch that he has taken over the lease of the above Hotel, and that he is ready to accommodate Tourists and Visitors in his Commodious House. Madeira Hotel affords First-class Accommodation. Tariff 6s. per day.

NORTHERN STEAMSHIP COMPANY, LIMITED.

Weather and other circumstances permitting, the Company's Steamers will leave as under:—

FOR RUSSELL, OPUA, WHANGAROA, MANGONUI.
CLANSMAN. Every Tuesday, 6 p.m. Cargo must be at vessel's side by 2 p.m.

FOR WHANGAREI, MANAIA.
Leaves Auckland Mon., Wed., 10 p.m. Leaves Whangarei Tues., Thurs., Sat., train, 11.30 a.m.

FOR AWANUI. Every Monday.

FOR GREAT BARRIER. Every Wednesday Midnight.

FOR NEW PLYMOUTH, RARAWA. Mon. and Thur. afternoons. Connecting with through train to Wellington at New Plymouth.

FOR WAIHEKE AND COROMANDEL. Leaves Auckland. Fri., 6th, 8 a.m. Leaves Coromandel Sat., 7th, noon. Mon., 9th, 10 a.m. Tues., 10th, 3 p.m. Also Week-end Steamers and Wednesday Steamer when required.

FOR WARKWORTH & WAY PORTS. Leaves Auckland. Fri., 6th, 7.30 a.m. Leaves Warkworth Sat., 7th, 12.30 p.m. Mon., 9th, 11 a.m. Tues., 10th, 3 p.m. Wed., 11th, noon. Thurs., 12th, 6 a.m. Thurs., 12th, midnt. Fri., 13th, 5 a.m.

FOR ARKLE'S, BROWN'S AND SILVERDALE. Leaves Auckland. Wed., 4th, 8 a.m. Leaves Silverdale Thurs., 5, 11.30 a.m. Fri., 6th, 9.30 a.m. Sat., 7th, 2 p.m. Mon., 9th, 11 a.m. Mon., 9th, 4 p.m. Fri., 13th, 1.30 p.m. Sat., 14th, 7.30 a.m.

FOR RAGLAN AND KAWHIA. RIMU. Every Monday, 2 p.m.

NORTHERN S.S. CO., LTD., Agents.

LION ALE LION ALE

IS THE CHOICEST PRODUCTION OF THE BREWER'S ART.

THE IDEAL BEER FOR AN IDEAL CLIMATE. BREWED UNDER IDEAL CONDITIONS FROM PUREST MATERIALS.

On Sale at all Hotels.

THE LION BREWERY, Ltd.,
KHYBER PASS, AUCKLAND.