

THE TOURIST AND TRAVELLER. WHERE TO STAY AND WHERE TO GO.

ASHHURST.

MASONIC HOTEL,
ASHHURST.

This popular house of call has been taken over by the freehold owner and proprietor, MR. A. G. HAVILL, of racing fame, who extends a hearty welcome to his many friends. Everything of the very best.

BLLENHEIM.

ROYAL HOTEL,
BLLENHEIM.

THE SPORTSMAN'S HOME.

TARIFF, 4/6 PER DAY, 15/- WEEK.

R. CANN Proprietor.
(Late Royal Hotel, Nelson.)

EMPIRE HOTEL,
BLLENHEIM.

In intimating that I have taken over the above Hotel, I have every confidence that past patrons will renew their support to the new regime. The public generally and commercials will have every attention to their home comforts, and all sorts of liquors will be found to be of the very Best. Nothing is stocked that will be kept, as the very best only will be sold, and good quality will not keep; it will have a quick sale.
TOM KEATING Proprietor.

WHERE TO STAY AT BLLENHEIM.

MASONIC HOTEL.

Patronised by Commercials and Public Service. Run on up-to-date lines. Cleanliness, civility and "Good Tucker." Moderate terms. Mr. and Mrs. Alex. Tucker, formerly Queen's Ferry, Auckland; Federal, Wanganui; and latterly Empire (leading house), Westport, have every confidence in catering for everything of the best. Phone 245. Box 126.
ALEX. TUCKER Proprietor.

BULLS.

CRITERION HOTEL,
BULLS.

EXCELLENT ACCOMMODATION FOR THE TRAVELLING PUBLIC.

Choicest Brands of Liquors in Stock.

W. H. HOSKING Proprietor.

CAMBRIDGE.



MASONIC HOTEL,
CAMBRIDGE.

New and up-to-date brick house, just rebuilt. All modern conveniences. Leading family and commercial hotel. Under personal supervision. Phone 1.

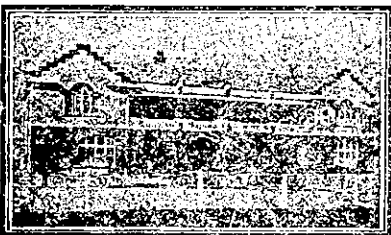
VICTOR CORNAGA Proprietor.

CENTRAL HOTEL,
CAMBRIDGE.

FOR TRAVELLERS AND TOURISTS.
This Hotel is Centrally Situated, being Opposite Post Office.

The most Convenient Hotel in Cambridge. Quiet, central, refined. Letters and Telegrams promptly attended to. Only the Best Liquors Stocked.

W. J. BROWN Proprietor.



NATIONAL HOTEL,
CAMBRIDGE.

Opposite the Town Hall and Jubilee Gardens. These fine, new, brick buildings are handy to the Railway Station and the Famous Cambridge Domain. Undoubtedly the best appointed hotel in the Waikato. Climate unrivalled. Excellent Cuisine. Moderate Tariff. The Best Wines, Spirits and Beer only are served. Letters and telegrams promptly attended to. Sample rooms. Phone 131.
MRS. C. A. TULLY Proprietress

NEW ZEALAND'S ROLL OF HONOUR.

IN MEMORIAM CARDS.

With Soldier's Portrait Similar to that appearing in "Sporting Review."

ARTHUR CLEAVE AND CO., LTD.,
HIGH STREET, AUCKLAND.

CARTERTON.

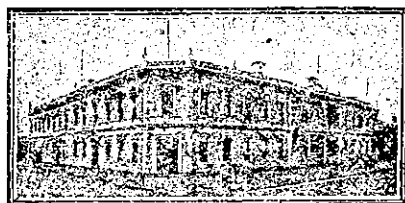
CLUB HOTEL,
CARTERTON.

W. REDMOND Proprietor.

A HOME AWAY FROM HOME. A WELCOME TO ALL.

Only Best of Wines, Spirits and Ales Stocked.

CHRISTCHURCH.



WHERE TO STAY IN CHRISTCHURCH.

STOREY'S HOTEL,

Right opposite Railway Station. Lunch for convenience of Railway Travellers at 11.45 a.m. Convenient to all parts of City and Suburbs. Electric Cars start from door.

W. J. BLAKE Proprietor.



NEW BRIGHTON HOTEL,
CHRISTCHURCH.

Now under the proprietorship of the well-known Marnie Edwards. An up-to-date Hotel, possessing all the advantages of a popular seaside resort. Hot salt water baths, bathing, etc. A 20min. car service to and from the City. Visitors will find Accommodation, Cuisine, etc., unsurpassed. Tariff, 7s. per day.
M. EDWARDS Proprietor.

WINDSOR PRIVATE HOTEL
MANCHESTER ST., CHRISTCHURCH.

Close to Railway Station and Centre of City. Tariff, 5s. per day; 30s. per week.

MRS. N. J. JOHNSTON, Proprietress.



NEW BRIGHTON CAFE.

On the Seafrost, facing the Esplanade.

A perfect winter climate; cool in summer, warm in winter. Excellent accommodation in rooms or suite. Write or wire for tariff.

MRS. ALFRED JOHNSON,
Proprietress.

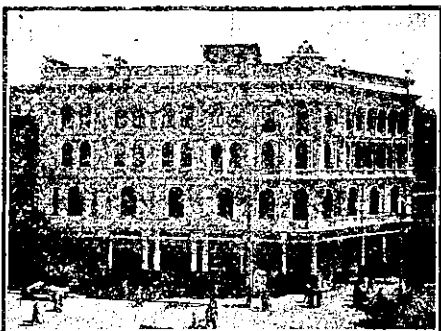
DARGAVILLE.

NORTHERN WAIROA HOTEL,
DARGAVILLE.

The Favourite House among North Auckland Travellers. Excellent accommodation; all conveniences. Close to wharf. Letters and telegrams attended to. Phone No. 26.

F. L. HODGES Proprietor.

DUNEDIN.

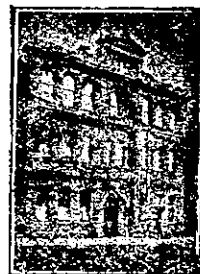


GRAND HOTEL,
DUNEDIN.

THOROUGHLY RENOVATED FROM ROOF TO BASEMENT.
Management: ARTHUR A. PAAPE.

DUNEDIN.

GLADSTONE HOTEL,
MACLAGGAN STREET, DUNEDIN.



The most centrally situated Hotel in the City. First-class Accommodation for Tourists, Travellers and Boarders. Suites of rooms for families. Charges moderate. A Special Feature: 1/6 Lunch from 12 to 2 p.m. Hot Cold and Shower Baths. The Very Best Wines, Ales and Spirits Supplied.

JOHN COLLINS Proprietor.

GRIDIRON HOTEL,

PRINCES STREET, SOUTH DUNEDIN. Just above the G.P.O. Trams stop opposite Hotel. Good accommodation for Travellers and Travellers. Terms moderate. The Gridiron is known for its excellent liquors. Electric light.

SAMUEL W. GEDDES .. Proprietor.

EAST OXFORD.

HAREWOOD ARMS,

EAST OXFORD. Excellent accommodation. The favourite stopping place of visitors to the Ashley Gorge. Near Railway Station.

H. COLLINS Proprietor
(Late of Timaru.)

FEATHERSTON.

EMPIRE HOTEL,
FEATHERSTON.

H. E. CARD Proprietor. The Recognised Commercial Travellers House for the Wairarapa. Newly furnished. Extra bathrooms; hot and cold showers. Everything up-to-date. Tariff, 10/6 per day. Special rate for Commercials.

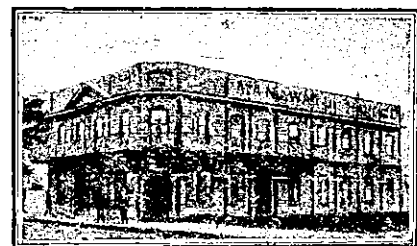
FEILDING.

HASTIE'S HOTEL,
FEILDING.

Opposite Post Office and three minutes from Railway Station. Night porter in attendance. First-class accommodation. Excellent cuisine. Tariff, 8s. 6d. Phone 34. P.O. Box 66.

S. W. R. EVANS Proprietor.

FOXTON.



MANAWATU HOTEL,
FOXTON.

PERCY LUMSDEN Proprietor.

This House has been the recognised rendezvous of the Theatrical Profession. Visitors will find every comfort and convenience at this well-known House. Only the Best Brands of Wines, Spirits and Ales Stocked.

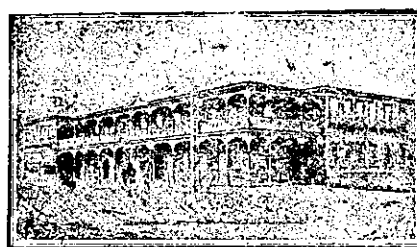
GISBORNE.

TURANGANUI HOTEL,
(Directly Opposite Wharf)
GISBORNE.

First-class accommodation for the Travelling Public. Electric light throughout. Hot and cold shower baths. Tariff, 6s. per day. Telephone 51.

B. H. AISLABIE Proprietor.

HAMILTON.



HAMILTON HOTEL,
HAMILTON.

M. HOOPER Proprietress.

This commodious and up-to-date Hotel is replete with every modern convenience for the comfort of visitors. The cuisine is first-class. Tariff moderate. Only the best of liquors kept in stock.

HASTINGS.

GRAND HOTEL,
HASTINGS.

ENTIRELY FIREPROOF THROUGHOUT.

OVER 100 WELL-FURNISHED UP-TO-DATE BEDROOMS.

Eight First-class Sample Rooms.

THOS. J. BENNETT Proprietor.

PACIFIC HOTEL,
HASTINGS.

ALF. ELLINGHAM, the well-known sport, extends a welcome to his many friends throughout New Zealand. First-class cuisine. Moderate tariff. Everything right up-to-date.

A. J. ELLINGHAM Proprietor.

HAWERA.

THE CENTRAL HOTEL,
HAWERA.

The above Hotel has been rebuilt and is now open to guests. Visitors and Travellers will find everything new, and can rely upon getting every comfort and attention. Electric light throughout. Every modern convenience.

MRS. M. CRAMP Proprietress.

HOKIANGA RIVER.

HOREKE HOTEL,
HOKIANGA RIVER.

Beautifully situated on the River, it offers to Tourists and Travellers First-rate bathing, boating and fishing. Replete with every convenience, including billiard table. Excellent cuisine; every comfort. Drop in and see "Bill" any time you pass, you are always welcome.

W. QUEENIN Proprietor.

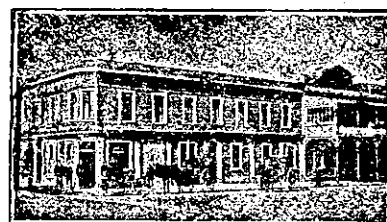
HELENSVILLE.

Kaipara Hotel,
HELENSVILLE.

First-class accommodation for Tourists and the Travelling Public. Tariff, 8s. per day, or £2 per week. One minute from South Helensville Railway Station. Telephone 23. Night service with Auckland, three rings.

JAMES DOWLING Proprietor.

HOKITIKA.



KELLER'S HOTEL,
HOKITIKA.

W. KELLER Proprietor.

First-class accommodation for the travelling public. Only Best Brands of Wines and Spirits kept.

INGLEWOOD.

INGLEWOOD HOTEL,
INGLEWOOD.

D. WILSON Proprietor.

First-class accommodation for the travelling public. Wines and Spirits of the Best Brands only.

INVERCARGILL.

RAILWAY HOTEL,

INVERCARGILL. Directly opposite Railway Station, Post Office and Government Buildings. Convenient to all trams and theatre. Special concessions to theatrical companies. Excellent table and up-to-date furnishings; hot and cold water. P.O. Box 222. Telephone 503.

W. A. PRINTZ Proprietor.

ARE YOU A MOTORIST?

Then You must Read the

N.Z. MOTOR AND CYCLE JOURNAL.

Monthly.

Of all Newsagents and Booksellers.
Price, 6d.