

THE TOURIST AND TRAVELLER. WHERE TO STAY AND WHERE TO GO.

CHRISTCHURCH.

WINDSOR PRIVATE HOTEL
MANCHESTER ST., CHRISTCHURCH.

Close to Railway Station and Centre of City. Tariff, 5s. per day; 30s. per week.

MRS. N. J. JOHNSTON, Proprietress.

DARGAVILLE.

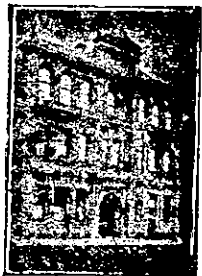
NORTHERN WAIROA HOTEL
DARGAVILLE.

The Favourite House among North Auckland Travellers. Excellent accommodation; all conveniences. Close to wharf. Letters and telegrams attended to. Phone No. 28.

F. L. HODGES Proprietor.

DUNEDIN.

GLADSTONE HOTEL
MACLAGGAN STREET, DUNEDIN.



The most centrally situated Hotel in the City. First-class Accommodation for Tourists, Travellers and Boarders. Suites of rooms for families. Charges moderate. A Special Feature: 1/5 Lunch from 12 to 2 p.m. Hot Cold and Shower Baths. The Very Best Wines, Ales and Spirits Supplied.

JOHN COLLINS Proprietor.

GRIDIRON HOTEL
PRINCES STREET, SOUTH DUNEDIN.

Just above the G.P.O. Trams stop opposite Hotel. Good accommodation for Travellers and Travellers. Terms moderate. The Gridiron is known for its excellent liquors. Electric light.

SAMUEL W. GEDDES .. Proprietor.

EAST OXFORD.

HAREWOOD ARMS
EAST OXFORD.

Excellent accommodation. The favourite stopping place of visitors to the Ashley Gorge. Near Railway Station.

H. COLLINS Proprietor
(Late of Timaru.)

FEATHERSTON.

EMPIRE HOTEL
FEATHERSTON.

H. E. CARD Proprietor.

The Recognised Commercial Travellers House for the Wairarapa. Newly furnished. Extra bathrooms; hot and cold showers. Everything up-to-date. Tariff, 10/6 per day. Special rate for Commercials.

FEILDING.

HASTIE'S HOTEL
FEILDING.

Opposite Post Office and three minutes from Railway Station. Night porter in attendance. First-class accommodation. Excellent cuisine. Tariff, 8s. 6d. Phone 34. P.O. Box 66.

S. W. R. EVANS Proprietor.

FOXTON.



MANAWATU HOTEL
FOXTON.

PERCY LUMSDEN Proprietor.

This House has been the recognised rendezvous of the Theatrical Profession. Visitors will find every comfort and convenience at this well-known House. Only the Best Brands of Wines, Spirits and Ales Stocked.

HOTEL PRINTING—

- MENUS
- LABELS
- MEMO. FORMS
- CARDS, ETC.

ARTHUR CLEAVE AND CO., LTD.,
AUCKLAND.

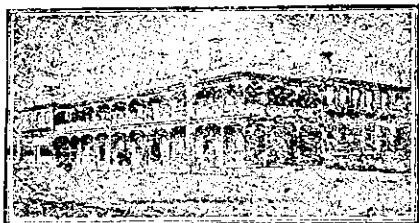
GISBORNE.

TURANGANUI HOTEL
(Directly Opposite Wharf)
GISBORNE.

First-class accommodation for the Travelling Public. Electric light throughout. Hot and cold shower baths. Tariff, 6s. per day. Telephone 51.

B. H. AISLABIE Proprietor.

HAMILTON.



HAMILTON HOTEL
HAMILTON.

M. HOOPER Proprietress.

This commodious and up-to-date Hotel is replete with every modern convenience for the comfort of visitors. The cuisine is first-class. Tariff moderate. Only the best of liquors kept in stock.

HASTINGS.

GRAND HOTEL
HASTINGS.

ENTIRELY FIREPROOF THROUGHOUT.

OVER 100 WELL-FURNISHED UP-TO-DATE BEDROOMS.

Eight First-class Sample Rooms.

THOS. J. BENNETT Proprietor.

PACIFIC HOTEL
HASTINGS.

ALF. ELLINGHAM, the well-known sport, extends a welcome to his many friends throughout New Zealand. First-class cuisine. Moderate tariff. Everything right up-to-date.

A. J. ELLINGHAM Proprietor.

HAWERA.

THE CENTRAL HOTEL
HAWERA.

The above Hotel has been rebuilt and is now open to guests. Visitors and Travellers will find everything new, and can rely upon getting every comfort and attention. Electric light throughout. Every modern convenience.

MRS. M. CRAMP Proprietress.

HOKIANGA RIVER.

HOREKE HOTEL
HOKIANGA RIVER.

Beautifully situated on the River, it offers to Tourists and Travellers First-rate bathing, boating and fishing. Replete with every convenience, including billiard table. Excellent cuisine; every comfort. Drop in and see "Bill" any time you pass, you are always welcome.

W. QUEENIN Proprietor.

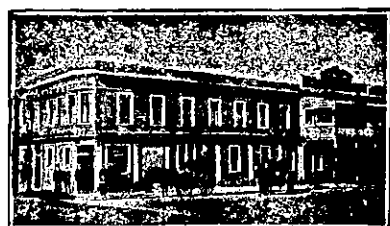
HELENSVILLE.

KAIPARA HOTEL
HELENSVILLE.

First-class accommodation for Tourists and the Travelling Public. Tariff, 8s. per day, or £2 per week. One minute from South Helensville Railway Station. Telephone 23. Night service with Auckland, three times.

JAMES DOWLING Proprietor.

HOKITIKA.



KELLER'S HOTEL
HOKITIKA.

W. KELLER Proprietor.

First-class accommodation for the travelling public. Only Best Brands of Wines and Spirits kept.

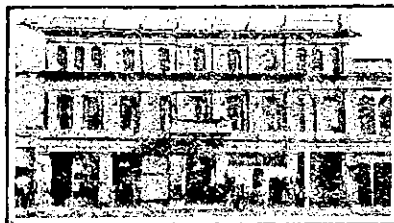
INGLEWOOD.

INGLEWOOD HOTEL
INGLEWOOD.

D. WILSON Proprietor.

First-class accommodation for the travelling public. Wines and Spirits of the Best Brands only.

INVERCARGILL.

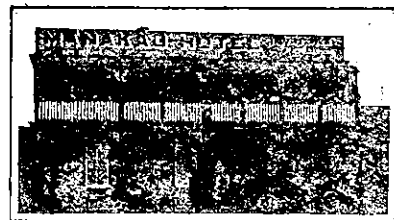


SOUTHLAND CLUB HOTEL
INVERCARGILL.

Patronised by His Excellency the Governor and Suite. This Hotel is most conveniently situated, within 3min. of the Railway, Post and Telegraph Office. For the convenience of Commercial Travellers, day porter meets all trains. Night porter always in attendance.

MISS F. CAVANAGH .. Proprietress.

MANAKAU.

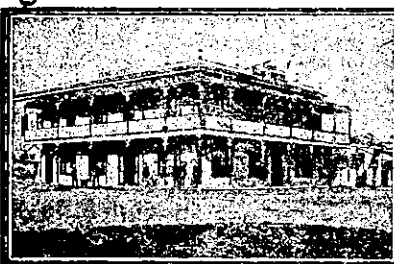


MANAKAU HOTEL
MANAKAU, MANAWATU LINE.

J. W. DAVIES Proprietor
(Late of Albion Hotel, Shannon.)

Manning's Prize Ales on Draught. Everything true to label.

MARTINBOROUGH.

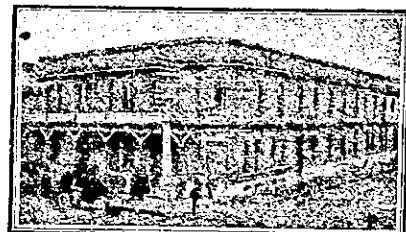


CLUB HOTEL
MARTINBOROUGH.

The recognised Best Hostelry in Martinborough has been taken over by Mr. C. J. Nelson, formerly of the Wakatu Hotel, Nelson, and the Masonic Hotel, Waitara. Excellent accommodation for travellers. First-class cuisine. Everything of the very best. All Wines and Spirits true to label.

C. J. NELSON Proprietor.

MASTERTON.



CLUB HOTEL
MASTERTON.

HERMANN CRASS Proprietor
(Late of Arcadia Hotel, Wellington, the Wellington Club and the U.S. Co.)

First-class table. First-class sample rooms. Tariff, 9s. per day. Phone 57.

NAPIER.

PROVINCIAL HOTEL
NAPIER.

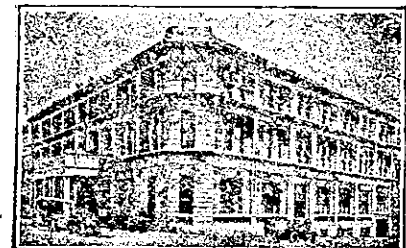
THE LEADING COMMERCIAL HOTEL IN NAPIER.

Now under New Management.

Central, Commodious, Comfortable.

Adjacent to Railway Station, Theatre and Marine Parade. The Provincial offers to tourists and travellers a Comfortable Hotel at a Moderate Tariff.

T. A. HEATH Proprietor
(Late Assistant Manager Masonic Hotel.)



THE CALEDONIAN HOTEL
NAPIER.

This well-known Leading Commercial Hotel has recently been renovated, and is now under new management. A comfortable home. Tourists and travellers specially catered for. Central, convenient and refined. Only the Best Liquors Stocked.

A. C. HARRISON Proprietor.

CLARENDON HOTEL
NAPIER.

(Opposite Post Office.)

Renovated and refurnished throughout and now open to visitors. Speight's Ale; the Best of Wines and Spirits. Telephone 690. P.O. Box 222.

H. T. HANLON Proprietor.



MEMORIAL CARDS.

Fine quality cards containing inset of four pages with badge, particulars, verse and photograph printed thereon, may be obtained from the Office of "The N.Z. Sporting and Dramatic Review." No extra charge is made for the reproduction of the block made from the photograph, which has appeared in this paper under "New Zealand's Roll of Honour."

Arthur Cleave & Co., Ltd.
Printers and Publishers,
HIGH STREET AND VULCAN LANE,
AUCKLAND.