

**THE TOURIST AND TRAVELLER. WHERE TO STAY AND WHERE TO GO.**

**NELSON.**

**PROVINCIAL HOTEL,**  
BRIDGE STREET, NELSON.

J. J. F. J. BAXTER ..... Proprietor.

This popular hostelry has been taken over by Mr. Baxter, long and well known to the travelling public as steward of the s.s. Nikau. All wines and spirits guaranteed true to label. Harley's Prize Ales on draught.

**TASMAN HOTEL,**  
THE PORT, NELSON.

This Popular Hotel, once known to many travellers and visitors to Nelson and West Coast as the "Ship," is now thoroughly renovated, remodelled and refurnished. One quality for everything—the Best. Dodson's Prize Ales and Stout always obtainable.

W. S. HORROCKS ..... Proprietor.

**PIER HOTEL,**  
PORT, NELSON.

Under New Management. Visitors and the travelling public will find everything in the way of comfort and attention. All meals and beds 1s. 6d. Cups of tea obtainable at any hour. Dining-room under the personal supervision of Mrs. Diamanti. Phone 343.

C. L. DIAMANTI ..... Proprietor  
(Late of the West Coast and Marlborough Goldfields.)

**NEW PLYMOUTH.**



CRITERION HOTEL,

NEW PLYMOUTH.

Being centrally situated is unequalled for tourists and commercial gentlemen. The table is maintained at a uniform standard of excellence, and visitors can be certain of obtaining the best menu in New Plymouth. Hot and cold baths always available. Sanitary appointments are well up to date. Night porter in attendance. P.O. Box 21. Phone 30.

J. McKEAN ..... Proprietor.

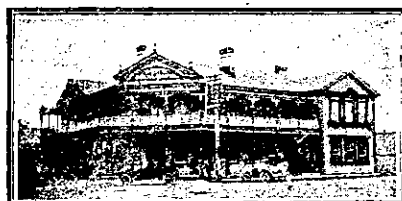
WHERE TO STAY IN NEW PLYMOUTH.

**WHITE HART HOTEL,**  
NEW PLYMOUTH, N.Z.

Leading Commercial and Tourist House.

H. S. BROOKMAN ..... Proprietor.

**NGARUAWAHIA.**



**DELTA HOTEL,**  
NGARUAWAHIA.

This Hotel is replete and up-to-date with all modern conveniences and offers first-class accommodation for Tourists and the Travelling Public. The only Free House in Waikato. Only the Best Brands of Liquors Stocked.

L. DUNN ..... Proprietor.

**OAMARU.**

**ERNEST R. SPEID,**  
CARRIER, OAMARU.

Letters and Telegrams Receive Prompt Attention.  
Phone 363, or Star and Garter Hotel. Box 31.

YOUR LUGGAGE Removed from Station, Hotel, Anywhere, Carefully and with Despatch.

**NORTHERN PRIVATE HOTEL.**

Corner Tyne and Wansbeck Streets, OAMARU.

Now under the Proprietorship of Mrs. Harvey, late of the Star and Garter. Visitors are assured of every comfort and attention. Cuisine unsurpassed. Moderate tariff.

MRS. M. HARVEY .... Proprietress

ARE YOU A MOTORIST ?

Then You must read the "N.Z. MOTOR AND CYCLE JOURNAL"

Monthly.

PRICE, 6d.

**PALMERSTON NORTH.**

**OCCIDENTAL HOTEL,**  
PALMERSTON NORTH.

CAPTAIN J. MITCHELL, Proprietor  
(Late of Dominion Hotel, Hawera.)

This well-known Hotel, with the clock in the roof, has been taken over by MR. MITCHELL, who extends a hearty welcome to all old and new friends. Everything of the very Best.

**THE CLUB HOTEL,**  
PALMERSTON NORTH.

Stands on two acres of land; frontage 165ft.; promenade balcony; contains 60 bedrooms; and private sitting-rooms and 12 sample rooms. The appointed house for the Association of N.Z. and Australian Commercial Travellers.

H. B. TUCKER,  
Proprietor and Owner.

**PANMURE.**

**PANMURE HOTEL,**  
PANMURE,  
AND DYER'S HALL, PANMURE.

HENRY H. DYER ..... Proprietor.

Wines and Spirits of the Best Brands only stocked. A hearty welcome always awaiting old friends and new faces.

**PATEA.**

**THE ALBION HOTEL,**  
PATEA.

First-class accommodation for tourists, families and travellers. Wines, Ales and Spirits of the Best.

J. A. COOGAN ..... Proprietor.

**PETONE.**

**CENTRAL HOTEL,**  
JACKSON STREET, PETONE.

Under New Management. This well-known and popular house of call has been taken over by Mrs. H. Maddock, late of Blenheim, who extends a hearty welcome to her many Marlborough friends. All wines, spirits and liquors true to label.

MRS. H. MADDOCK ... Proprietress.

**RICHMOND.**



**WHITE HART HOTEL,**  
RICHMOND.  
(Under New Management.)

J. HAWTHORN ..... Proprietor.  
(Late of Puponga.)

This well-known hostelry, on the main Nelson-West Coast Road, has been taken over by Mr. Hawthorn, who extends a hearty welcome to tourists and travellers. Favourite stopping place for motorists. All wines and spirits true to label. Harley's Prize Nelson Ales on draught.

**ROTORUA.**

**THE GEYSER HOTEL,**  
ROTORUA.

Golf Links Adjoin the Hotel.

SITUATED AT WHAKAREWAREWA,  
THE AMPHITHEATRE OF

**THE SPOUT BATH,**

Free to Guests. Famous for its Extraordinary Cures of Rheumatism, Neuralgia, Lumbago, Sciatica, Kidney, Liver and other Complaints.

Five minutes from Rotorua. Bus Free from Station to Hotel for Guests.

Tariff from 12s. per day.  
From £3 10s. per week.

ROX WOODWARD ..... Proprietor  
(Late Grand and Palace Hotels, Rotorua, and Royal Hotel, Auckland.)

**SPORTING AND DRAMATIC REVIEW.**

FOR QUALITY PRINTING,

the kind of Printing that has a strong advertising pull and brings in new business to You,

SEND TO THE N.Z. SPORTING & DRAMATIC REVIEW.

**ROTORUA.**

**GRANDE VUE,**  
ROTORUA.

Situated centrally, with balconies overlooking the Beautiful Government Gardens, this house is without a rival in Rotorua.

The Government Bath Buildings, in the same grounds, are but two or three minutes' walk from the house, thus affording special bathing facilities to patrons.

GRANDE VUE has recently been taken over by

MR. GEORGE BROWN,

in conjunction with MRS. REES; both for many years in charge of the Grand Hotel, Rotorua. Visitors to Rotorua can rely on finding their every comfort supplied at Grande Vue.

Tariff, 9s. per day; £2 15s. per week.  
Telegrams: "Grande Vue, Rotorua."

Thos. Cook and Son, Booking Agents.

**RIVERTON.**

WHERE TO STAY IN RIVERTON.  
**RAILWAY HOTEL,**

Directly Opposite Railway Station.

Ideal Hotel for a holiday at the seaside. Everything of the very Best.

CHAS. DE CLIFFORD .. Proprietor.

**SANSON.**

**JUNCTION HOTEL,**  
SANSON.

MRS. Z. L. BUCKERIDGE,  
PROPRIETRESS.

Wanganui to Wellington favourite stopping place for motorists and travellers. Accommodation paddocks for stock. Splendid duck-shooting in vicinity, big bags to be got. Everything of the very Best. A hearty welcome to all. Phone No. 6. P.O. Box 7.

**SHANNON.**

**ALBION HOTEL,**  
SHANNON.

The popular house of call. New, commodious; electric light. Most up-to-date on the Manawatu line. First-class accommodation. Speight's Ale on draught. All wines and spirits true to label. A welcome to all. Tariff, 8s. per diem. Phone 14.

W. McKEGG ..... Proprietor.  
(Late of Otaki.)

**TAITA.**

**TAITA HOTEL.**

TAITA, LOWER HUTT, WELLINGTON.  
MRS. C. M. CAMPBELL, Proprietress.

Excellent table. Travellers specially catered for. The Soldiers' Home, in close proximity to Trentham Camp. All wines and spirits true to label. Staples' Prize Ales on draught. Easily reached by motors from Wellington and bus from Lower Hutt Railway Station.

**TAKAKA.**

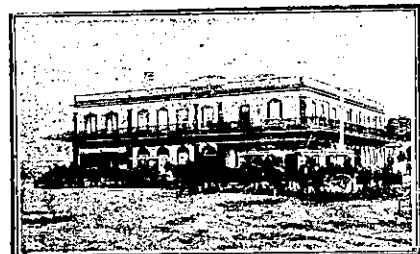
**GLOBE HOTEL,**

WAITAPU, TAKAKA DISTRICT.

Ranks among the First-class Hotels throughout the Province, and is a favourite resort for all tourists, commercial men and travellers generally. Telephonic and telegraphic connection on premises. All kinds of vehicles and horses for hire at shortest notice. Best brands only of ales, wines and spirits dispensed; a trial solicited. Dodsons and Sons' ales on draught.

JAMES PAGE ..... Proprietor.

**TAURANGA.**



**STAR HOTEL,**  
TAURANGA.

The Leading Commercial Hotel in the Bay of Plenty. Best accommodation. Excellent cuisine. Hot and cold baths. Telegrams: "Star, Tauranga." Phone 6. P.O. Box 21.

A. BROWN ..... Proprietor.

N.Z. MOTOR & CYCLE JOURNAL.  
Published Monthly.

Of all Newsagents and Booksellers.  
PRICE, 6d.

Printed and Published by ARTHUR CLEAVE, of Ellerslie, at his Registered Printing Office, Vulcan Lane, Auckland, for the Proprietors, Arthur Cleave and Co., Ltd.

THURSDAY, FEBRUARY 20, 1919.

**THAMES.**

**SALUTATION HOTEL,**  
MARY STREET, THAMES.

HARRY BROWNLEE ... Proprietor.

ONLY SPEIGHT'S ALE ON DRAUGHT.

Best Ale in Town.

**EXCHANGE HOTEL,**  
POLLEN STREET, THAMES.

GREGOR A. HODGE .... Proprietor.

A sport who turns no man down, and has Speight's Draught Ale of the very Best to offer. Know him and you have a friend for life.

**POST OFFICE HOTEL,**  
MARY STREET, THAMES.

Visitors will find here excellent accommodation and the very best Wines, Spirits and Ales.

MRS. W. MORRISON .. Proprietress.

**TIMARU.**

**THE DOMINION HOTEL,**  
TIMARU.

The most modern and up-to-date Hotel in Timaru, overlooking Caroline Bay and the harbour. Everything new inside and out. Absolutely fireproof; electric light. Replete with every convenience; bath-rooms (hot and cold) on every floor. Moderate tariff.

JOHN REILLY ..... Proprietor.

**TIRAU.**

**OXFORD ROYAL HOTEL,**  
TIRAU.

Situated between Cambridge and Rotorua. First-class accommodation for visitors, motorists and the travelling public.

W. F. BELL ..... Proprietor.

**UPPER HUTT.**

**PROVINCIAL HOTEL,**  
UPPER HUTT.

The Provincial offers all the comforts of a first-class home. The only hotel in the township. First-class stabling accommodation. Wines, Beers and Spirits of the very Best. Letters and telegrams promptly attended to.

MRS. M. E. YOUNG .. Proprietress.

**WAIKARI.**

**GREAT NORTHERN HOTEL,**  
WAIKARI.

J. McTAGGART ..... Proprietor.  
The favourite house of motorists between Christchurch and Kaikoura. Opposite Railway Station. Everything of the Best. All liquors true to label. Terms moderate.

**WAIPAWA.**

**COMMERCIAL HOTEL,**  
WAIPAWA.

Private suites of apartments and every convenience for the accommodation of the public. Wines, spirits and beer of the Best Quality only. A first-class billiard table. Stabling and paddock accommodation.

W. PELLOW ..... Proprietor.

**WAIROA.**

**WAIROA** ..... Hawke's Bay.  
The Commercial Travellers' Home. Visitors to Wairoa are assured of a hearty welcome at the

**WAIROA HOTEL.**

Everything of the very best. Excellent Cuisine and First-class Accommodation. J. DICKSON ..... Proprietor  
(Late of Masonic Hotel, Napier.)

**WANGANUI.**

WHERE TO STAY IN WANGANUI.

**METROPOLITAN HOTEL,**  
Right Opposite Railway Station.

Most convenient Hotel in the town. Everything of the very best. Tariff, 8s. per day. A welcome to all.

W. H. WILSON ..... Proprietor.

**NEW ZEALAND'S ROLL OF HONOUR.**

IN MEMORIAM CARDS.

With Soldier's Portrait Similar to that appearing in "Sporting Review."

ARTHUR CLEAVE AND CO., LTD.,  
HIGH STREET, AUCKLAND.