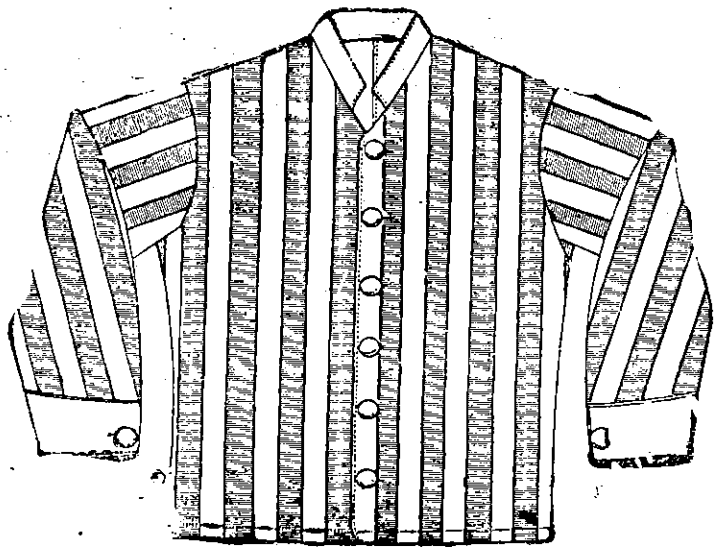


**YOUNG & COLLINS, LTD.,**  
**RACING GEAR SPECIALISTS. MAKERS OF RACING COLOURS.**



The **YOUNG AND COLLINS, Ltd.**, Race Colours are recognised as the Dominion's best value. Owners and Trainers everywhere appreciate the fact, and have in consequence bestowed the most complimentary references in hundreds of letters received.

There is a superiority in their make that attracts and pleases. The Satins and Sateens used are highest quality, specially imported, and will stand hard wear and rough handling.

When you want Race Colours it's a business proposition to order from the firm that specialises and supply largely the Dominion's requirements in Racing Colours.

PRICES—COMPLETE SETS IN **BEST SATIN**, 70s., 75s., 77s. 6d., 80s. 85s. CAPS ONLY IN **BEST SATIN**, 15s.

PRICES—COMPLETE SETS IN **SATEEN**, 40s., 42s. 6d., 45s., 47s. 6d., 50s. CAPS ONLY IN **SATEEN**, 11s. 6d.

**YOUNG & COLLINS, LTD.,**  
 Makers of Racing Colours. . . Racing and Trotting Gear Specialists.  
**AVENUE - - - - WANGANUI**

**Wellington's Leading**  
**Auctioneering Firm.**  
 CENTRAL AUCTION ROOMS,  
 53, Cuba Street, Wellington.  
 A. T. TRENDLE . . . . . Proprietor.

**Auctioneers, Land, Estate, and Business Agents.**

Sales both outside, stock, etc., a great speciality. Auction Sales conducted in all parts of the country. Prompt settlement guaranteed. Trust Estates Managed. Fine assortment of goods for sale at Auction Prices.  
 Telephone 2504.

[A CARD.]  
 PHONE 3924.  
**H. T. BARNES,**  
 A.N.Z.I.A.  
**Registered Architect,**  
 Fletcher's Buildings,  
 4 WILLIS STREET,  
 WELLINGTON.

**THE CHEAPEST PLACE**  
 We know of.

**850 ACRES FREEHOLD.**

700 ACRES IN GRASS.  
 WINTERS 1400 SHEEP AND 110 CATTLE.  
 FIVE-ROOMED BUNGALOW.  
 WOOLSHED. DIP. YARDS.  
 HANDY TO SCHOOL AND P.O.

**ONLY £8 : 10 PER ACRE.**

READ THIS AND THEN ACT.

This Property has been inspected for us by one of Poverty Bay's leading station managers, and in his report he states: "This is the cheapest place I have seen for a long time, and is quite equal to country selling round — at £12 per acre. Lies well to the sun and is well watered and judiciously subdivided. A rattling good proposition and a real snip at the money."

**Buscke & Parker,**  
**SOLE AGENTS,**  
**GISBORNE.**  
**SHEEP STATION.**  
**3,700 ACRES.**

2500 FREEHOLD—1200 N.L. at 4d. per acre rental; 1000 acres in good grass; rest bush, fern and scrub; all rideable; well fenced and watered by river and creeks. Carrying over 2300 sheep, 95 head cattle and 30 horses. Good 7-r. homestead, all conveniences. House for married couple, woolshed, 5 machines, good yards and dip. **PRICE, £3 10s. PER ACRE. CASH £5000**, balance arranged, or would entertain good town properties as deposit or as part payment. (No. 176.)

"This does not want much consideration; while you are thinking about it the other man is getting in first... Look sharp, and you will be first!"

**HARRY HALL, LAND & ESTATE AGENT,**  
 BOX 242 GISBORNE,  
**POVERTY BAY.**

**NORTHERN STEAMSHIP COMPANY LIMITED.**

Weather and other circumstances permitting, the Company's Steamers will leave as under:—

**FOR RUSSELL, OPUA, WHANGAROA, MANGONUI.**  
 CLANSMAN. Every Tuesday, 6 p.m.  
 Cargo must be at vessel's side noon.  
**FOR WHANGAREI, MANAIA.**  
 Leaves Auckland. Leaves Whangarei. Mon., Wed., and Fr., 10 p.m. Tues., Thur., Sat., train, 11.30 a.m.

**FOR AWANUI.**  
 APANUI. Every Monday

**FOR GREAT BARRIER.**  
 Every Wednesday at midnight.

**FOR NEW PLYMOUTH.**  
 RARAWA. Every Monday and Thursday afternoon.  
 Connecting with through train to Wellington at New Plymouth.

**FOR WAIHEKE AND COROMANDEL.**  
 Leaves Auckland. Leaves Coromandel. Fri., 24th, 3 p.m. Sat., 25th, 1 p.m.  
 Also Week-end Steamers and Wednesday Steamer when Required.

**FOR WARKWORTH & WAY PORTS.**  
 Leaves Auckland. Leaves Warkworth. Fri., 24th, 7.20 a.m. Fri., 24th, midnt. Mon., 27th, 8 a.m. Mon., 27th, 2 p.m. Tues., 28th, 8 a.m. Tues., 28th, 2 p.m.

**FOR ARKLE'S BROWN'S AND SILVERDALE.**  
 Leaves Auckland. Leaves Silverdale. Thur., 23rd, 8 a.m. Thur., 23rd, 11 a.m. Fri., 24th, 8 a.m. Sat., 25th, 1 p.m. Mon., 27th, 10 a.m. Mon., 27th, 2 p.m. Thurs., 30th, noon Thurs., 30th, 5 p.m. Fri., 31st, 2 p.m. Sat., 1st, 7 a.m.  
 Special trips to Arkle's frequently.

**FOR RAGLAN AND KAWHIA.**  
 RIMU. Every Monday, 2 p.m.

NORTHERN S.S. CO. LTD. Agents.

**MARVELLOUS**  
**'KLENAL'**  
**The Great Cleanser**

Why Pay 7/6 to Clean your Suit or Costume, when **'KLENAL'** will do it for a Few Pence.

"KLENAL" is Sold by all Leading Grocers and Tailors.

If your Storekeeper does not stock it, send Postal Note for 1/3 and receive a bottle by return mail.

**'Klenal' Manf. Co.**  
 (of Australasia),  
 113, Hastings Street, CHRISTCHURCH.  
 (New Zealand Factory.)

**SALE OF THOROUGHBRED HORSES AT GISBORNE.**

DURING Race Week (February, 1919) MESSRS. WILLIAMS AND KETTLE, LTD., will offer, amongst other valuable lots, the Imported Sire, **HEATHER MIXTURE (12)**, 1910, by St. Serf from Sprig of Heather. Some of his stock are now in training and show good form.

**WAIKATO TROTTING CLUB.**  
 (Under N.Z. Trotting Association.)

**ANNUAL MEETING.**  
 To be held at Hamilton,  
**WEDNESDAY, FEBRUARY 12, 1919.**

**PROGRAMME.**

- Races will be run in following order:
1. **INTRODUCTORY HANDICAP** (Optional) of 70sovs; second horse to receive 10sovs, third horse 5sovs from the stake. For unhoppled trotters only. For horses that have never won at better than 2.35 to the mile at the time of nomination. Limit, 4.15. Distance, one mile and a-half. Nomination 20s., acceptance 25s.
  2. **CLAUDELANDS HANDICAP** (Harness) of 80sovs; second horse to receive 10sovs, and third horse 5 sovs from the stakes. For horses that have never won at better than 2.32 to the mile at time of nomination. Limit, 4.0. Distance, one mile and a-half. Nomination 20s., acceptance 30s.
  3. **WAIKATO TROTTING CUP** (Harness) of 250sovs; second horse to receive 35sovs, and third horse 15 sovs from the stake. Limit, 4.50. Distance, two miles. Nomination 35s., acceptance 50s.
  4. **FRANKTON HANDICAP** (Harness) of 100sovs; second horse to receive 15sovs, and third horse 5sovs from the stake. Distance, one mile and a-half. Limit, 3.50. Nomination 20s., acceptance 30s.
  5. **STEWARDS' HANDICAP** (Harness) of 150sovs; second horse to receive 20sovs, and third horse 10sovs from the stake. Limit, 2.25. Distance, one mile. Nomination 25s., acceptance 40s.
  6. **RAILWAY HANDICAP** (Harness) of 100sovs; second horse to receive 15 sovs, and third horse 5sovs from the stake. Limit, 3.45. Distance, one mile and a-half. Nomination 20s., acceptance 35s.
  7. **HAMILTON HANDICAP** (Harness) of 150sovs; second horse to receive 20sovs, and third horse 10sovs from the stake. For unhoppled trotters only. Limit, 5.10. Distance, two miles. Nomination 25s., acceptance 40s.
  8. **FAREWELL HANDICAP** (Saddle) of 100sovs; second horse to receive 15sovs, and third horse 5sovs from the stake. Limit, 3.8. Distance, one mile and a-quarter. Nomination 20s., acceptance 30s.

NOMINATIONS for all events close with Mr. C. F. Mark, Secretary Auckland Trotting Club, Auckland, or the Secretary Waikato Trotting Club, at Hamilton, at 5 p.m. on **MONDAY, JANUARY 27.**

HANDICAPS to appear on **SATURDAY, FEBRUARY 1.**

ACCEPTANCES for all events close with the Secretary at Hamilton, or Mr. C. F. Mark, Secretary Auckland Trotting Club, Auckland, at 5 p.m. on **WEDNESDAY, FEBRUARY 5.**

ARTHUR J. SMITH,  
 Secretary.

**POVERTY BAY TURF CLUB.**

**SUMMER MEETING.**  
 On the Makaraka Racecourse on  
**SATURDAY, FEBRUARY 8, 1919.**

**OFFICERS:**  
 President: J. W. Nolan, Esq. Vice-President: J. Clark, Esq. Hon. Treasurer: F. W. Nolan, Esq. Stewards: Messrs. R. Sherratt, J. L. Bowen, J. Maynard, A. R. Hinc, K. S. Williams, G. Reynolds, W. L. Rutledge. Judge: R. B. Lusk, Esq. Starter: Mr. A. G. Wood. Handicapper: Mr. H. Coyle. Clerk of Totalisator: Mr. W. O. Skeet. Clerk of Scales: Mr. M. DeCosta. Clerk of Course: Mr. W. A. Stephens. Secretary: Mr. D. R. DeCosta.

- To start at 12.30 p.m.
1. **COOK HACK HANDICAP** of 150 sovs; second horse to receive 20 sovs, and third horse 10sovs from stake. Six furlongs. Nomination 20s., acceptance 30s.
  2. **HURDLE HANDICAP** of 150sovs; second horse to receive 20sovs, and third horse 10sovs from stake. One mile and a-half. Over six flights of hurdles. Nomination 20s., acceptance 30s.
  3. **TELEPHONE HANDICAP** of 150 sovs; second horse to receive 20 sovs, and third horse 10sovs from stake. Five furlongs. Nomination 20s., acceptance 30s.
  4. **TURANGA STAKES HANDICAP** of 300sovs; second horse to receive 30 sovs, and third horse 20sovs from stake. The winner of any race of the value of 50sovs after the declaration of weights to carry 31b extra; of 100sovs, 51b extra; of 150sovs, 71b extra; of 200sovs, 101b extra. One mile and a-quarter. Nomination 20s., acceptance 60s.
  5. **MAIDEN SCURRY** of 150sovs; second horse to receive 20sovs, and third horse 10sovs from stake. Winners on the flat at any time barred. Four furlongs and a-half. Weight, 8.0. Nomination 20s., acceptance 30s.
  6. **WELTER HANDICAP** of 150sovs; second horse to receive 20sovs, and third horse 10sovs from stake. Minimum weight, 7.7. One mile. Nomination 20s., acceptance 30s.
  7. **STEWARDS' HANDICAP** of 200sovs; second horse to receive 25sovs, and third horse 15sovs from stake. Winner of Telephone Handicap 51b extra. Six furlongs. Nomination 20s., acceptance 40s.
  8. **FAREWELL HANDICAP** of 150sovs; second horse to receive 20sovs, and third horse 10sovs from stake. Winner of Telephone Handicap, Turanga Stakes and Stewards' Handicap to be re-handicapped. Six furlongs and a-half. Nomination 20s., acceptance 30s.

**DATES OF NOMINATIONS, WEIGHTS AND ACCEPTANCES**

To be forwarded to the Secretary at the Club's Office, Childers Road, Gisborne.

NOMINATIONS for all events close on **FRIDAY, JANUARY 24, 1919, at 8 p.m.**

WEIGHTS declared on **THURSDAY, FEBRUARY 6** (Night of Gisborne Racing Club's Meeting), at about 8 p.m.

ACCEPTANCES for all events close on **THURSDAY, FEBRUARY 6, at 9.30 p.m.**

D. R. DeCOSTA,  
 Secretary.

**WEEK BY WEEK**  
 WE PLEASE HUNDREDS OF EXACTING CUSTOMERS.  
**WHY NOT YOU?**  
 WE CARRY THE LATEST STYLES IN SHIRTS, HATS, TIES, SOCKS, AND ALL MEN'S MERCERY.

**WE SPECIALISE IN**  
 MILITARY REQUISITES—BEECHES, PUTTERS, TUNICS, BELTS, ETC.

**GIVE US YOUR BUSINESS—WE WILL HOLD IT.**  
**H. C. GILLIES & Co.,** 151 MANCHESTER ST., CLOCK TOWER, CHRISTCHURCH.

**"THE TALKERIES,"**  
 24 WILLIS STREET - WELLINGTON, N.Z.

Specialists in "HIS MASTER'S VOICE" Gramophones and Records

Any Record not in Stock Procured if Wanted Special Attention paid to Country Orders.

British Electrical "Ever-Ready" Specialities in Torches and Lamps Always on Hand. Big Stock of Records.

The Recognised Gramophone Experts of New Zealand. Always at your Service.

Telephone 3007. P.O. BOX 847, WELLINGTON.