

WELLINGTON.



NEW ZEALANDER HOTEL,
MANNERS STREET, WELLINGTON.

First-class accommodation for Tourists and Travellers. Electric light throughout; all modern conveniences. Recently renovated and refurnished. Tariff by arrangement. Phone 1761.

A. J. MONRO Proprietor.
(Late of Family Hotel, Lower Hutt.)

POST OFFICE HOTEL,
WELLINGTON.

Offers first-class accommodation at a moderate tariff. Excellent cuisine. Telegrams, "Post Office Hotel, Wellington." Phone 2827.

MATTHEW MUIR Proprietor.

EMPIRE HOTEL,
WELLINGTON, N.Z.

THE MOST CENTRALLY-SITUATED HOTEL IN WELLINGTON.

The Proprietor having Purchased the Freehold of this High-class Property is sparing no Expense in Refurnishing and Redecorating. Patrons can now rely on **GOOD ATTENTION AND ACCOMMODATION.**

TARIFF: 12/6 PER DAY.

Phone 196. P.O. Box 835.

RICHARD DWYER Proprietor.

ARCADIA PRIVATE HOTEL,
Lambton Quay, WELLINGTON.

Replete with Every Modern Convenience. Electric Light Throughout.

Containing 79 Rooms; well lit and Ventilated.

Central Position to Railway Trains and Post Office.

Telegrams and Letters Receive Prompt Attention.

Tariff Moderate.

MRS. E. COCKAYNE,
Proprietress.

BARRETT'S HOTEL,
LAMBTON QUAY, WELLINGTON
(Opposite Bank of N.Z.).

Accommodation for 100 Guests. Electric light throughout; electric lift. Night porter in attendance. Letters and Telegrams receive prompt attention. Tariff 8s. per day, 45s. per week. Phone 1976.

D. DALTON Proprietor.

THE AUCKLAND SAFE DEPOSIT.

Corner of High Street & Vulcan Lane,
AUCKLAND.

An Absolutely Secure Place for the safekeeping of Debentures and other valuable and important documents; also Jewels, Plate, etc.

An Impregnable Stronghold, containing separate and distinct Safes, of various sizes, but with no two keys of the same pattern.

Protected by Huge Doors of Steel, controlled by Automatic Time Locks.

Constructed by the Celebrated "Millners' Safe Co., Ltd., of London and Liverpool.

Absolutely Unassailable by Fire.
Absolutely Burglar-proof.

WELLINGTON.

TRAMWAY HOTEL,
ADELAIDE ROAD, WELLINGTON.

MR. FRANK McPARLAND

Begs to inform his friends and the public that he has taken over this well-known Hotel. Visitors can rely on getting only the Best.

ALBERT HOTEL,
WELLINGTON.

The home of the Dramatic Profession, Commercial and the Travelling Public. The Popular Hostelry. Tariff 9/6 per day; £2 10/- per week.

JAMES McDONALD Proprietor.

WHERE TO STAY IN WELLINGTON.
THE RUTLAND PRIVATE HOTEL,
Plimmer's Steps, off Lambton Quay.

New and up-to-date fireproof building, overlooking Harbour, in business centre. Electric light, two bathrooms on each floor, hot and cold water. Excellent accommodation for the travelling public. Tariff 8s. per day, £2 2s. per week. Phone 4415.

MRS. L. M. McCORMICK, Proprietress

PIER HOTEL,
Opp. Queen's Wharf, WELLINGTON,
and in the midst of the Principal Business Warshouses.

First-class accommodation. Everything of the very best. Phone 949. P.O. Box 755.

MRS. D. SULLIVAN .. Proprietress.

NOW IS THE TIME TO ADVERTISE.

If business is dull—advertise and make it good. If business is good—advertise and make it better.

THE SPORTING AND DRAMATIC REVIEW

is a live advertising proposition.

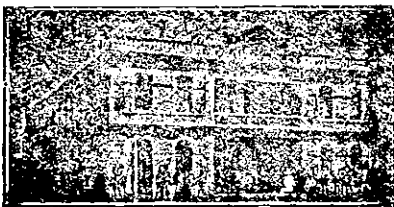
WHANGAREHU.

BRIDGE HOTEL,
WHANGAREHU.

GUS. McDONALD

Has pleasure in announcing that he has taken over the above well-known Hotel, and will supply all leading brands of Beer and Spirits. Extra paddocking accommodation is now provided for drovers.

WHANGAREI.



WHANGAREI HOTEL,
WHANGAREI.

This fine house, just rebuilt in brick and furnished in up-to-date style, now offers unrivalled accommodation to the travelling public. Sample room. Hot and cold baths. Two minutes' walk from saltwater bathing place. Stabling second to none. Best wines, ales and spirits kept in stock.

SAMUEL McMAHON Proprietor.

T. J. McIVOR & SONS,
CABINETMAKERS AND
UNDERTAKERS,
Karangahape Rd., NEWTON
(Next Post Office).

M. MOTOR AND CYCLE JOURNAL.

Of all Newsagents and Booksellers.

PRICE, 6d.

"Quart of Good Ale is Dish for a King."—Shakespeare—"Winter's Tale."

Beer, Delicious Beer—Beautiful,
Bright, Seductively Sparkling,
Perfectly Pure.

STAPLES' XXXX BEER
IS THE
BEST BEER BREWED

And may be obtained at almost all Hotels in Wellington and the East and West Coast Districts.

Call for STAPLES' BEER!
Drink only STAPLES' BEER!
And Touch No Other.

STAPLES & CO., Ltd.,
Molesworth & Murphy Streets,
WELLINGTON.

HOTELS FOR SALE.

DWAN BROS., WELLINGTON

(Established 1880.)

HOTEL, Southern City, 4 1/2 years lease. Trade £240.

COUNTRY HOTEL, North; 10 acres land. Takings £70. Price £1250.

HOTEL, Rangitikei. Price, £400.

HOTEL, Wellington, good trade; 5000sq. TARANAKI. Tenant wanted; seven years' lease.

WANGANUI District. Price £1800.

WAIKARAPPA. Rent £4. Price £1655.

DWAN BROS.,

WILLIS STREET, WELLINGTON

Drink

Peerless ALE

Made from Pure Malt and Hops
Naturally Matured.

For Purity and Quality Unexcelled.
INVALID STOUT

A SPECIALTY.

C. L. INNES & CO.
LIMITED,

HAMILTON.

Brewers, Bottlers and Aerated Water Manufacturers.

Branches: Hamilton and Waikato.
Aerated Works: Taumarunui.

TAUPIRI COAL MINES (LTD.)

TAUPIRI COAL

THE BEST HOUSEHOLD COAL IN THE DOMINION.

CAN NOW BE OBTAINED FROM ALL COAL DEALERS IN WAIKATO.

All Communications to be made to the Secretary.

J. FOTHERINGHAM, Secretary,
AUCKLAND.

FARMERS, LISTEN!

It is to your interest to instal the

"VICTORY"

NEW RELEASER

MILKING MACHINE

The finest Proposition on the market. It is mechanically perfect.

YOU WANT THE BEST, HERE IT IS—THE "VICTORY."

WILL YOU ENQUIRE ABOUT IT?

BECAUSE IT IS PERFECT IN DETAIL AND SIMPLICITY.

RELEASER—The latest, simplest and most efficient.

THE UNIQUE CLAW—If you have a three-teated cow you simply shut off one or more cups as desired.

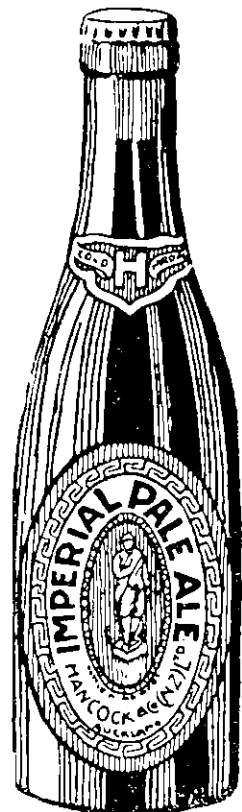
TEAT CUPS—Telescopic, thus enabling the inflation to be kept at tension and facilitating the flow of milk.

THE PULSATOR—Perfect and unsurpassed for utility and efficiency. Hundreds of unsolicited testimonials.

The Dominion Hardware Co., Ltd.

(LATE GILBERT BOULTON AND CO.),

29 ALBERT STREET - - AUCKLAND

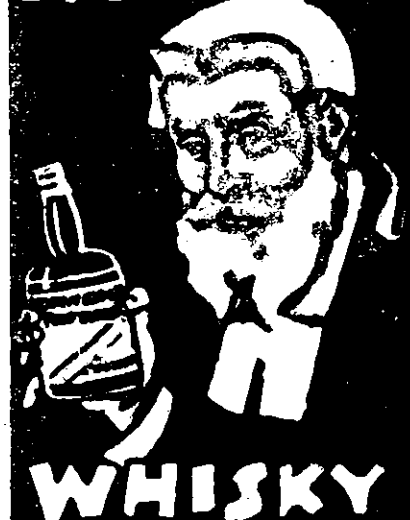


ASK FOR HANCOCK'S

"IMPERIAL" ALE AND STOUT.

Always in **PERFECT** Condition.

DAWSON'S



PEARSON AND CO., LTD., Sole Agents for Wellington District.