

# Finest Holiday in N.Z.

## The Grand Motor Tour

CONNECTING

Queenstown, Lake Wakatipu,

WITH

Mount Cook - - Hermitage.

## The Grand Motor Tour

Is Full of Interest from Start to Finish.

GLORIOUS SCENERY. BEAUTIFUL LAKES.

WRITE US DIRECT or get in touch with  
Thos. Cook & Son and Government Tourist Dept.  
and let them tell you all about it.

Mt. Cook Motor Coy. Ltd. Fairlie & Queenstown

### THE WAVERLEY PRIVATE HOTEL,

MARION STREET, WELLINGTON.

Excellent accommodation for visitors. Close to Te Aro Post Office and handy to business centre, trams, etc. Tariff, 6s. 6d. per day, 35s. per week. Permanents by arrangement. Phone 2947.

WM. OWERS ..... Proprietor.  
(Late of Timaru.)

### E. MORRIS, JUNIOR, FUNERAL DIRECTOR.

Head Office and Works:

60, TARANAKI ST., WELLINGTON.

During the last five years, Mr. Morris has carried out over 2000 funerals.

Telephone 937.

Undertaking work carried out in all parts of New Zealand. Largest stock of Wreaths and Crosses in the Dominion. Own Motor Hearse, Mourning Coaches

### LOVELY AKAROA.

**ALF. J. READ'S MOTOR SERVICE.**  
Cars leave Akaroa daily at 8.30 a.m. for Christchurch, Wednesdays 6.45 a.m. Cars leave Broadways daily at 2.30 p.m. for Akaroa, Wednesdays 3 p.m. The most picturesque motor run in New Zealand. Up-to-date touring cars, careful and efficient drivers. Special trips arranged. Bookings at Government Tourist Department and Adams, Ltd. Phone No. 6 Akaroa. Private address, A. J. READ, WILLIAM STREET, AKAROA.

## GOOD REASONS

can be readily furnished as to the advisability of having recourse to Beecham's Pills in time of need. Not among the least is the length of time that this preparation has been in the public service. For about seventy years they have exercised a beneficent influence upon the health of a vast multitude of people, until the name of Beecham's Pills is a household word in almost every country in the world. Such a record is, in itself, convincing testimony that this preparation is of real worth, and is a good reason.

## FOR TAKING

when needed, a medicine which stands in such universal favour. Beecham's Pills are scientifically prepared from the best selected ingredients and may be taken by all with safety and confidence. Their action upon the system is an important consideration. The relief they give is speedy, the cure they effect is lasting, and as there is nothing drastic in their operation, they may be taken at any time. Of all the medicines designed to relieve and cure digestive troubles, none have had greater success than the tried and trusted remedy

# Beecham's Pills.

Prepared only by

THOMAS BEECHAM, St Helens, Eng.

Sold in boxes, labelled price

10d (36 pills), 1/11 (56 pills) & 2/9 (168 pills).

### Waihi-Tauranga Motor Service.

LEAVES WAIHI DAILY AT 12.30 P.M.  
(Excepting Saturdays) on Arrival of Train from Thames and Hamilton.

LEAVES TAURANGA TUESDAY, THURSDAY AND SATURDAY, 8 A.M.

Connecting with Main Trunk and Thames Trains.

WEDNESDAY AND FRIDAY, 5.30 A.M.  
Connecting with Express for Auckland and Thames.

FARES: Single, £1; Return, 35s.  
Phone No. 8.

### DEVERELL & CRIMMINS,

Tauranga Agent, W. J. Baigent.  
Phone 78.



Make YOUR HAIR beautiful

Nature intended your hair to be beautiful. When the natural oil which protects and beautifies the hair is deficient, it must be supplemented. Otherwise the hair will become dull, dry, and brittle; it will split at the ends and prematurely fall out. If you wish to make it beautiful, you must rub into the scalp

## ROWLAND'S MACASSAR OIL

which flows quickly to the roots and affords the nourishment essential to the growth of luxuriant hair. Prepared in a golden tint for fair hair.

Sold by Stores, Chemists, Hairdressers, or ROWLANDS, 67, HATTON GARDEN, LONDON. Great care must be taken to ask for Rowland's Macassar Oil, and avoid cheap, spurious imitations.

You have the heat under proper control all the time and every dish is prepared with a certainty that leaves nothing to chance.

Don't Use the Old Dirty Methods.  
**COOK WITH ELECTRICITY.**

### HEATWELL OVEN.

SEE MY SHOWROOM DISPLAY of "Heatwell" Appliances, Water Circulators, Toasters, Steamers, Urns, Etc., Etc., ANY VOLTAGE.

Write to, call up, or see the Sole Manufacturers,

Roberts' Iron, Steel and Oven Works, Electrical and Engineering Dept. Showrooms and Offices: 4th Floor, Baker's Bldgs, Junction Featherston Street and Lambton Quay. Works: Holland Street.

Box 85, G.P.O., WELLINGTON. Phones 1767 and 3885.

Sole Manufacturers of the Robert's "Salamander" Ovens.



### HOW TO SEE AUCKLAND.

Chase Motor Char-a-Bancs Leave G.P.O. Daily at 2.30 p.m. on

#### SIGHT-SEEING TRIPS.

Embracing Suburbs, Gardens, Parks and Places of Interest. Fare, 5s. Guide accompanies all Sight-seeing Parties; careful and experienced drivers. An up-to-date motor plant for Picnic Parties, Touring Trips, etc. For further particulars apply to GOVT. TOURIST DEPT., THOMAS COOK AND SON, or

ANDREW AND ANDREW, Sole Proprs. Phones 2426 and 1603. Trip Tickets obtainable from Leading Hotels and Private Hotels.

### ROTORUA MOTOR COACHING COMPANY, LIMITED.

Mail Contractors, Coach and Motor Proprietors.

#### REGULAR SERVICES FROM ROTORUA TO—

Whakatane and Opotiki by motor, daily, at 8 a.m.

Taupo, daily motor in summer; tri-weekly in winter.

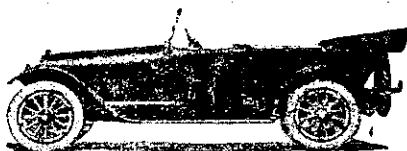
Paengerua, coach daily, at 7 a.m.

Tauranga, via Oropi, coach Monday, Wednesday and Friday, at 8 a.m., returning Tuesday, Thursday and Saturday.

Motors and Vehicles to all Sights in the Hot Lakes District by Arrangement, at Reasonable Rates.

W. T. CARR, Managing Director.  
K. J. RENNIE, Secretary.

Telegraphic Address: "Motoco." Box 5. Phone 19.

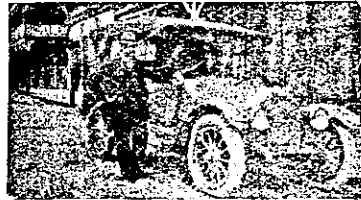


### WANGANUI - MARTON MOTOR SERVICE.

All Auckland Express Trains met at Marton Junction. Car leaves for Wanganui immediately arrival mail trains and returns from Wanganui at 3.30 p.m. to connect with up-train to Auckland. First-class six-cylinder cars. Single fares, 12s. 6d. Wire to reserve seats to the proprietor.

J. HODSON,  
Parkville Private Hotel,  
WANGANUI.

Facts Speak! Over 1100 men "reported sick" at the Oringi Camp (no "Fluenzol"), as against only 38 at Takapau Camp during a similar period. An officer of the Defence Dept. writes: "There is no doubt that the low rate of sickness (despite the severe weather) at the Takapau Camp was largely due to the quantity of "Fluenzol" consumed by all ranks." Gargle for Throats; Snuff up for Colds in the Head; Swallow for Influenza. Insist on "Fluenzol" 1/6 and 2/6.



RESETH'S MOTORS, REEFTON. R.m.t all trains. Special trips arranged to all parts of district. Address: Exchange Hotel or Cohens, Stationer. Phone 13.

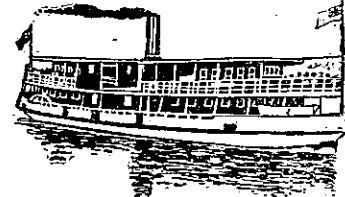
### RIVERTON WOOD & COAL DEPOT,

PALMERSTON STREET, RIVERTON.

C. E. JOHNSTONE,

GENERAL CARRIER, FORWARDING AGENT AND UNDERTAKER.

Drags and Buggies for Hire. Agent N.Z. Express Co. Arrangements made for Motor Launch Excursions up the Pourikinna River. Phone 28. P.O. Box 39.



### THE DEVONPORT STEAM FERRY COMPANY, LIMITED.

STEAMERS: Ngoiro, Peregrine, Albartross, Kestrel, Condor, Sparrowhawk, Goshawk, Eagle, Osprey, Britannia, Victoria, Takapuna, Lyttelton, Pelican, Young Bungaree, Kawau, Ruru, Merlin.

Steam Ferry (Passenger and Vehicular) Services to the Suburbs of

DEVONPORT, NORTHCOVE, BIRKENHEAD AND CHELSEA.

Steamers at short intervals daily from 6.30 a.m. to 11.40 p.m. Also all-night Service to Devonport.

Daily Service to St. Heliers Bay.

Excursion Steamers run to the Popular Resorts—St. Heliers Bay, Lake Takapuna, Motutapu, Motukorea and Pine Island, as notified in the Daily Papers. Steamers on hire for Excursions of any Description and for Extended Trips. Comfortable cabins. Every Convenience. Phones 246 and 284.

ALEX. ALISON ..... Manager.

## DON'T LOOK OLD!



But restore

your grey and faded hairs to their natural colour with

### LOCKYER'S SULPHUR HAIR RESTORER

SOLD EVERYWHERE.

Lockyer's gives health to the Hair and restores the natural colour. It cleanses the scalp, and makes the most perfect Hair Dressing.

This world-famed Hair Restorer is prepared by the great Hair Specialists, J. PEPPER & CO., LTD., London, and can be obtained from all chemists and stores throughout the world.

## AUCKLAND SAFE DEPOSIT

CORNER OF HIGH STREET & VULCAN LANE.

This Modern Building has been specially designed for Legal and Professional men requiring up-to-date Offices in a central position. Having frontages to High Street, Vulcan Lane and O'Connell Street, every room is excellently lighted. Strongrooms, electric lift, electric light. Situated within a few yards of Queen Street—free from noisy traffic—and adjacent to the new Courthouse, it is admirably adapted for Legal Chambers. It is undoubtedly the finest office building in Auckland.

Early Application should be made by those requiring Suites of Offices or Single Rooms.

Full particulars and terms on application to

**ARTHUR CLEAVE & CO., Ltd., High St. & Vulcan Lane.**

WRITE FOR BOOKLET.