

THE TOURIST AND TRAVELLER. WHERE TO STAY AND WHERE TO GO.

AUCKLAND.



The.....
Waverley
HOTEL and RESTAURANT
 QUEEN STREET, AUCKLAND.
 European Plan.



THISTLE HOTEL.
 QUEEN STREET, AUCKLAND.

JOHN MAHONEY (formerly of the Oxford Hotel) desires to intimate that he has taken over the above well-known house, and that patrons will meet with every comfort and convenience. Speight's XXX Ale on Draught.

KING'S COURT

Private Hotel.

UPPER QUEEN STREET,
 AUCKLAND.

UP-TO-DATE, SELECT.

Charmingly Situated in Three Acres of Ground, exquisitely laid out.

Telegrams:

"KING'S COURT, AUCKLAND."

Terms Moderate.

G. ARROWSMITH .. Proprietor.
 (Late of New Plymouth.)

'Phone 2256.

OCCIDENTAL HOTEL,
 VULCAN LANE,
 AUCKLAND.

MRS. N. LYNCH Proprietress
 (Late of Clarendon and City Hotels, Auckland.)

AKAROA.

MADEIRA HOTEL,
 LAVAUD STREET, AKAROA.

W. H. PIPER (late Christchurch) wishes to inform the public of Akaroa and surrounding bays of the Peninsula and Christchurch that he has taken over the lease of the above Hotel, and that he is ready to accommodate Tourists and Visitors in his Commodious House. Madeira Hotel affords First-class accommodation. Tariff 6s. per day.

ASHHURST.

MASONIC HOTEL,
 ASHURST.

This popular house of call has been taken over by the freehold owner and proprietor, MR. A. G. HAVILL, of racing fame, who extends a hearty welcome to his many friends. Everything of the very best.

BLenheim.

ROYAL HOTEL,
 BLENHEIM.

THE SPORTSMAN'S HOME.

TARIFF, 4/6 PER DAY, 25/- WEEK.

R. CANN Proprietor.
 (Late Royal Hotel, Nelson.)

EMPIRE HOTEL,
 BLENHEIM.

In intimating that I have taken over the above Hotel, I have every confidence that past patrons will renew their support to the new regime. The public generally and commercials will have every attention to their home comforts, and all sorts of liquors will be found to be of the very Best. Nothing is stocked that will be kept, as the very best only will be sold, and good quality will not keep; it will have a quick sale.

TOM KEATING Proprietor.

BLUFF.

CLUB HOTEL,
 BLUFF.

EXCELLENT ACCOMMODATION FOR THE TRAVELLING PUBLIC.

Only the Choicest Brands of Liquors.

W. WALKER Proprietor.

BULLS.

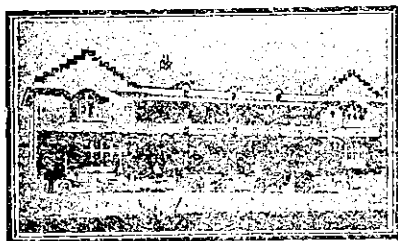
CRITERION HOTEL,
 BULLS.

EXCELLENT ACCOMMODATION FOR THE TRAVELLING PUBLIC.

Choicest Brands of Liquors in Stock.

W. H. HOSKING Proprietor.

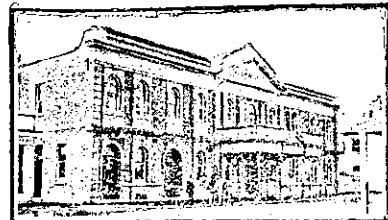
CAMBRIDGE.



NATIONAL HOTEL,
 CAMBRIDGE.

Opposite the Town Hall and Jubilee Gardens. These fine, new, brick buildings are handy to the Railway Station and the Famous Cambridge Domain. Undoubtedly the best appointed hotel in the Waikato. Climate unrivalled. Excellent Cuisine. Moderate Tariff. The Best Wines, Spirits and Beer only are served. Letters and telegrams promptly attended to. Sample rooms. 'Phone 131.

MRS. C. A. TULLY Proprietress.



MASONIC HOTEL,
 CAMBRIDGE.

New and up-to-date brick house, just rebuilt. All modern conveniences. Leading family and commercial hotel. Under personal supervision. 'Phone 1.

VICTOR CORNAGA Proprietor.

CENTRAL HOTEL,
 CAMBRIDGE.

FOR TRAVELLERS AND TOURISTS.

This Hotel is Centrally Situated, being Opposite Post Office.

The most Convenient Hotel in Cambridge. Quiet, central, refined. Letters and Telegrams promptly attended to. Only the Best Liquors Stocked.

W. J. BROWN Proprietor.

CARTERTON.

CLUB HOTEL,
 CARTERTON.

W. REDMOND Proprietor.

A HOME AWAY FROM HOME. A WELCOME TO ALL.

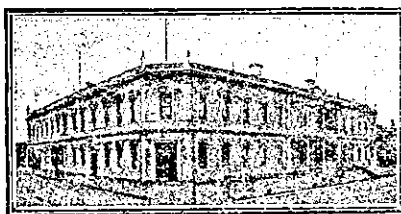
Only Best of Wines, Spirits and Ales Stocked.

MEMORIAL CARDS.

Fine quality cards containing inset of four pages with badge, particulars, verse and photograph printed thereon, may be obtained from the Office of "The N.Z. Sporting and Dramatic Review." No extra charge is made for the reproduction of the block, made from the photograph, which has appeared in this paper under "New Zealand's Roll of Honour."

ARTHUR CLEAVE & CO., LTD.,
 Printers and Publishers,
 HIGH STREET AND VULCAN LANE,
 AUCKLAND.

CHRISTCHURCH.



WHERE TO STAY IN CHRISTCHURCH.

STOREY'S HOTEL,

Right opposite Railway Station. Lunch for convenience of Railway Travellers at 11.45 a.m. Convenient to all parts of City and Suburbs. Electric Cars start from door.

W. J. BLAKE Proprietor.



NEW BRIGHTON HOTEL,
 CHRISTCHURCH.

Now under the proprietorship of the well-known *Mannie Edwards*. An up-to-date Hotel, possessing all the advantages of a popular seaside resort. Hot salt water baths, bathing, etc. A 20min. car service to and from the City. Visitors will find Accommodation, Cuisine, etc., unsurpassed. Tariff, 7s. per day.

M. EDWARDS Proprietor.

WINDSOR PRIVATE HOTEL
 MANCHESTER ST., CHRISTCHURCH.

Close to Railway Station and Centre of City. Tariff, 5s. per day; 30s. per week.

MRS. N. J. JOHNSTON, Proprietress.

CROMWELL.

GOLDEN AGE HOTEL,
 CROMWELL.

MR. ROBERT HAIG, having taken over the above well-known Hotel, offers Visitors to Cromwell Excellent Accommodation and Attention. First-class Billiard Table. Tariff, 6s. per day.

DARGAVILLE.

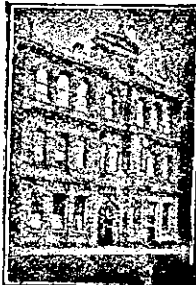
NORTHERN WAIROA HOTEL,
 DARGAVILLE.

The Favourite House among North Auckland Travellers. Excellent accommodation; all conveniences. Close to wharf. Letters and telegrams attended to. 'Phone No. 26.

F. L. HODGES Proprietor.

DUNEDIN.

GLADSTONE HOTEL,
 MACLAGGAN STREET, DUNEDIN.



The most centrally situated Hotel in the City. First-class Accommodation for Tourists, Travellers and Boarders. Suites of rooms for families. Charges moderate. A Special Feature: 1s. Lunch, from 12 to 2 p.m. Hot Cold and Shower Baths. The Very Best Wines, Ales and Spirits Supplied.

JOHN COLLINS Proprietor.

NOW READY.

REVISED MAP
 OF

AUCKLAND AND SUBURBS

Showing all Newly-named Streets, New Subdivisions, etc.

Mounted 12/6
 Paper 5/-

From all Booksellers or the Publishers,
ARTHUR CLEAVE AND CO., LTD.,
 Safe Deposit Buildings,
 HIGH STREET, AUCKLAND.

DUNEDIN.

GRIDIRON HOTEL,
 PRINCES STREET, SOUTH DUNEDIN.

Just above the G.P.O. Trams stop opposite Hotel. Good accommodation for Travellers and Travellers. Terms moderate. The Gridiron is known for its excellent liquors. Electric light.

SAMUEL W. GEDDES .. Proprietor.

PROVINCIAL HOTEL,
 STAFFORD STREET, DUNEDIN.

MR. A. HARVEY, having taken over the above well-known Hotel, offers Visitors every comfort and attention. Hot and cold baths and all modern conveniences. Excellent Cuisine. Moderate Tariff.

A. HARVEY Proprietor.

EAST OXFORD.

HAREWOOD ARMS,
 EAST OXFORD.

Excellent accommodation. The favourite stopping place of visitors to the Ashley Gorge. Near Railway Station.

H. COLLINS Proprietor
 (Late of Timaru.)

FEATHERSTON.

EMPIRE HOTEL,
 FEATHERSTON.

H. E. CARD Proprietor.

The Recognised Commercial Travellers House for the Wairarapa. Newly furnished. Extra bathrooms; hot and cold showers. Everything up-to-date. Tariff, 10/6 per day. Special rate for Commercials.

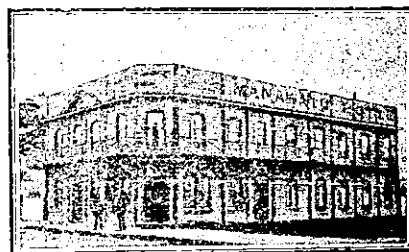
FEILDING.

HASTIE'S HOTEL,
 FEILDING.

Opposite Post Office and three minutes from Railway Station. Night porter in attendance. First-class accommodation. Excellent cuisine. Tariff, 8s. 6d. 'Phone 34. P.O. Box 66.

S. W. R. EVANS Proprietor.

FOXTON.



MANAWATU HOTEL,
 FOXTON.

PERCY LUMSDEN Proprietor.

This House has been the recognised rendezvous of the Theatrical Profession. Visitors will find every comfort and convenience at this well-known House. Only the Best Brands of Wines, Spirits and Ales Stocked.

GREYMOUTH.

ROYAL HOTEL,
 GREYMOUTH,
 Opposite Railway Station.

The most popular house of call on the West Coast. Everything of the very best. 'Phone 51. P.O. Box 89.

H. WEBB Proprietor.

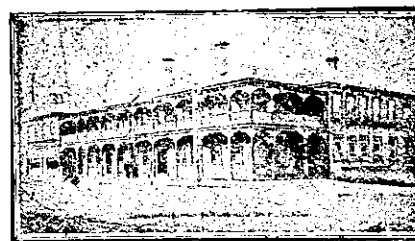
HAKATARAMEA.

TERMINUS HOTEL,
 HAKATARAMEA.

Recently renovated and refurnished throughout, is now one of the Finest Houses in the district. Everything possible will be done to ensure the comfort of guests. Moderate tariff. Excellent accommodation. Choicest brands of liquors.

J. BOYLE Proprietor.

HAMILTON.



HAMILTON HOTEL,
 HAMILTON.

M. HOOPER Proprietress.

This commodious and up-to-date Hotel is replete with every modern convenience for the comfort of visitors. The cuisine is first-class. Tariff moderate. Only the best of liquors kept in stock.