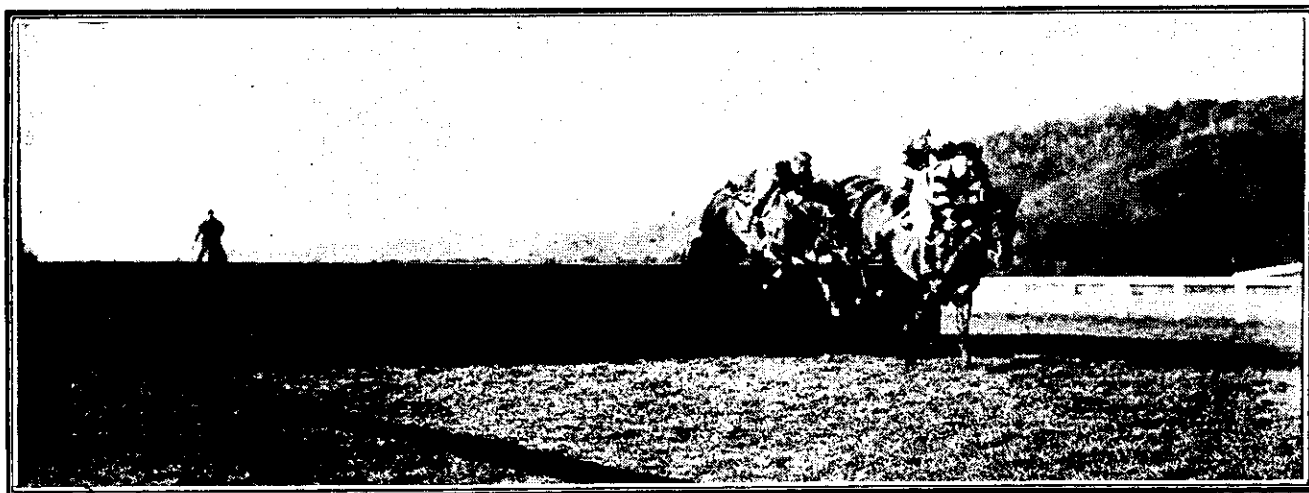
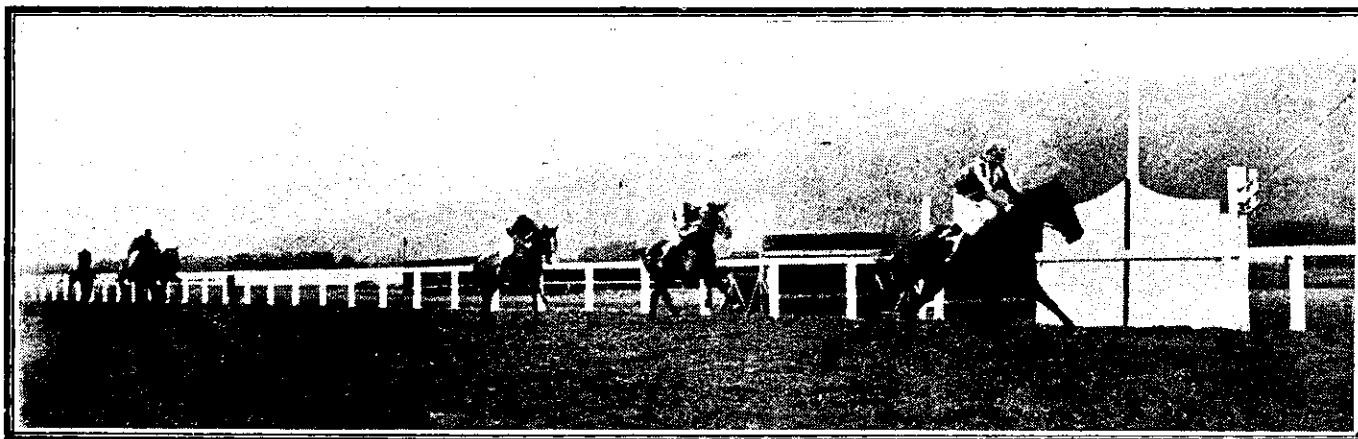


AT THE WATER JUMP IN THE WELLINGTON STEEPLECHASE (THREE MILES).—DIAVOLO (W. McKinnon) leading SLEIGHT OF HAND (A. McDonald), who is clearing the obstacle, MODDITE, COALITION, and CRIB in that order.



AT THE LAST FENCE IN THE WELLINGTON STEEPLECHASE (THREE MILES)—MASTER STROWAN (R. McSeveney) leading BON REVE (who is seen falling) and COALITION (H. McSweeney).



THE FINISH OF THE VITTORIA HACK HURDLES (1½ MILES) ON THE OPENING DAY OF THE WELLINGTON RACING CLUB'S WINTER MEETING—KAHUMANGU (Brooker) wins from DELAGE (F. Flynn), with REFORMATION (J. Kaan) third.



GROUP OF DELEGATES WHO ATTENDED THE ANNUAL NEW ZEALAND TROTting CONFERENCE IN WELLINGTON LAST WEEK.

Waitomo Caves Hostel.

Waitomo, Ruakuri, and Aranui Caves,

Reached by Daily Train from Wellington or Auckland.

THE Government Hostel at Waitomo is situated in a position from which the caves can be conveniently visited, and is connected by Telephone with the local Post and Telegraph Office.

TARIFF

Adults - 10s per Day.
Single Meals 2s 6d each.
Children between the ages of three and 12 half rates.

Obtain your tickets from the Govt. TOURIST BOOKING BUREAUX Wellington, corner of Grey and Featherston Sts., opp. G.P.O. Auckland: Custom Street. NO EXTRA Charge for Booking.

H.P.
the all British
SAUCE

It has a new and distinctive flavour, quite different from any other sauce.

Of all Sauces.

BROWN, BARRETT AND CO., AUCKLAND AGENTS.