

1918. **CHEVROLET** 1918.

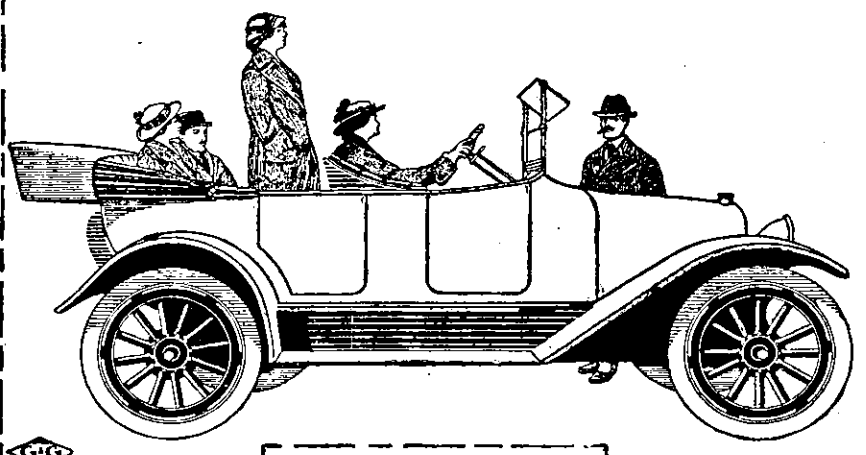
ELECTRIC
SELF-STARTER

The Surprise of the Year
 1918 is anticipated offering
AN EASY LEADER
 and our anticipations have been more than realized
WITH NO INCREASE IN PRICE

The New Model, 4-90, is equipped with Demountable Rims, Spare Rim, Better and Softer Upholstery and Cushions, Improved Springs, Improved and more accessible Distributor, Larger Radiator, Longer Gear Lever, Improved Door Locks, and many other improvements, thus outranking all competitors, and enabling us to offer
VALUE HITHERTO IMPOSSIBLE.

YOUR INSPECTION IS INVITED

ELECTRIC
LIGHTS



Controlling Agents for New Zealand:
THE DOMINION MOTOR VEHICLES, LIMITED
 44-46 Tory Street & 65 Courtenay Place
WELLINGTON



A FLYING VISIT

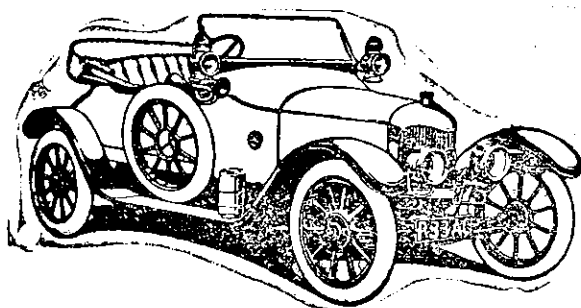
to your friend far out from the township can best be undertaken with an A.C. Light Car—for many reasons. It can be relied upon to make the journey there and back successfully, no matter what the state of the roads or how formidable the hills. By which we mean not only safely, but at a speed which many a higher-powered car would fail to show. The A.C. is efficient, comfortable, simple and economical—the lady driver's ideal.

Government work precludes us from supplying cars at present. May we book your order for post-war delivery?



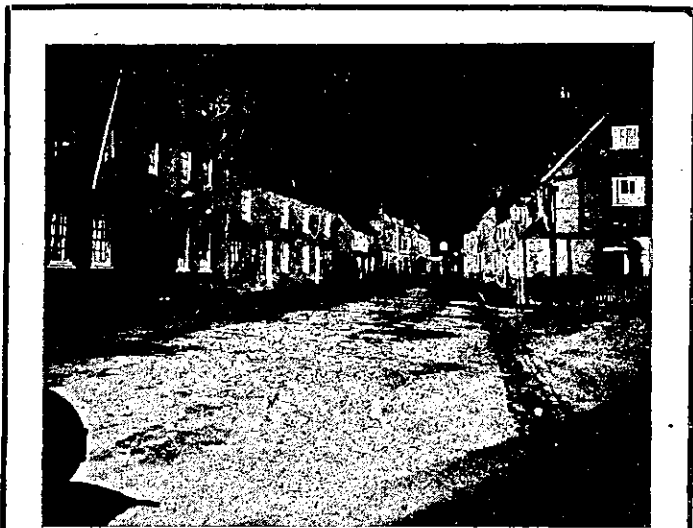
Auto-Carriers (1911) Ltd.

181-182, Hercules Road,
 Westminster Bridge Rd.
 LONDON, S.E.,
 England.



Car Lighting

and Starting



Motorists from the Old Country will recognise the scene as the Village of Amersham, Bucks. The building in the far distance, 375 yards from the car, is the old town hall, built by Sir William Drake in 1682. The width of the beam of light is 35 yards.

Is right in front for starting efficiency and light-giving capacity, and behind it stands the name of Vandervell. From the dynamo to the battery, the battery to switchboard, the switchboard to head, side, tail and interior lamps, it is a thoroughly sound system; a system, too, which is equally suitable for every style and type of car.

BRITISH made from BRITISH materials
 by BRITISH labour on BRITISH soil.
 Write at once for full range of C.A.V. literature.

C.A. Vandervell & Co. Ltd.,
 Electrical Engineers. ACTON, LONDON.
 ENG.

ADAMS LTD.

152, High Street, CHRISTCHURCH
 King Street, PALMERSTON NORTH
 The Avenue - - WANGANUI