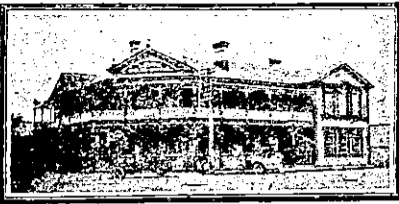


THE TOURIST AND TRAVELLER. WHERE TO STAY AND WHERE TO GO.

NGARUAWAHIA.



DELTA HOTEL,
NGARUAWAHIA.

This Hotel is replete and up-to-date with all modern conveniences and offers First-class Accommodation for Tourists and the Travelling Public. The only Free House in Waikato. Only the Best Brands of Liquors Stocked.

L. DUNN Proprietor.

OAMARU.

NORTHERN PRIVATE HOTEL.

Corner Tyne and Wansbeck Streets, OAMARU.

Now under the Proprietorship of Mrs. Harvey, late of the Star and Garter. Visitors are assured of every comfort and attention. Cuisine unsurpassed. Moderate tariff.

MRS. M. HARVEY Proprietress

ERNEST R. SPEID,
CARRIER, OAMARU.

Letters and Telegrams Receive Prompt Attention. 'Phone 363, or Star and Garter Hotel, Box 31.

YOUR LUGGAGE Removed from Station, Hotel, Anywhere, Carefully and with Despatch.

OHAEAWAI.

OHAEAWAI HOTEL,
O H A E A W A I.

First-class accommodation. Commercial room. Private sitting rooms; bath rooms, etc. Good stabling and paddocking; billiards.

W. MAY Proprietor.

ONEHUNGA.

HIBERNIAN HOTEL,
QUEEN STREET, ONEHUNGA.
FIRST-CLASS ACCOMMODATION.

Only Best Wines and Spirits Stocked. Tariff, 6/6 per day.

MRS. H. DINGLE Proprietress.

PALMERSTON NORTH.

OCCIDENTAL HOTEL,
PALMERSTON NORTH.

CAPTAIN J. MITCHELL, Proprietor (Late of Dominion Hotel, Hawera.)

This well-known Hotel, with the clock in the roof, has been taken over by MR. MITCHELL, who extends a hearty welcome to all old and new friends. Everything of the very Best.

THE CLUB HOTEL,
PALMERSTON NORTH.

Stands on two acres of land; frontage 165ft.; promenade balcony; contains 60 bedrooms, and private sitting-rooms and 12 sample rooms. The appointed house for the Association of N.Z. and Australian Commercial Travellers.

H. B. TUCKER, Proprietor and Owner.

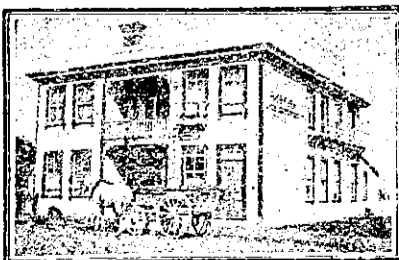
PANMURE.

PANMURE HOTEL,
P A N M U R E,
AND DYER'S HALL, PANMURE.

HENRY H. DYER Proprietor.

Wines and Spirits of the Best Brands only stocked. A hearty welcome always awaiting old friends and new faces.

PAPAKURA.



PAPAKURA HOTEL,
P A P A K U R A.

The Leading Commercial Hotel in the district. Excellent accommodation for visitors, travellers and tourists. First-class table. Wines, Spirits and Ales of the best quality. Afternoon tea for motoring parties a speciality. Good stabling and paddocks. Horses and traps for hire. Tariff moderate.

J. RYAN Proprietor.

PATEA.

THE ALBION HOTEL,
P A T E A.

First-class accommodation for tourists, families and travellers. Wines, Ales and Spirits of the Best.

J. A. COOGAN Proprietor.

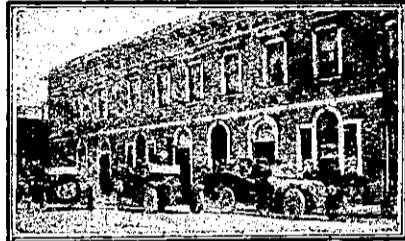
PETONE.

CENTRAL HOTEL,
JACKSON STREET, PETONE.

Under New Management. This well-known and popular house of call has been taken over by Mrs. H. Maddock, late of Blenheim, who extends a hearty welcome to her many Marlborough friends. All wines, spirits and liquors true to label.

MRS. H. MADDOCK ... Proprietress.

REEFTON.



DAWSON'S HOTEL,
R E E F T O N.

The Leading Hotel in Reefton. Wines and Spirits of the very Best Brands.

JAMES S. VAIL Proprietor.

RICHMOND.



WHITE HART HOTEL,
R I C H M O N D.

J. V. HALL Proprietor. (Late of Occidental Hotel, Hokitika.)

The above well-known house, on the Nelson-West Coast Road, has been taken over by Mr. Hall, who extends a hearty welcome to his many West Coast friends. All wines and spirits true to label. Harley's Prize Ales on draught. A welcome to all. The Sportsman's Hotel.

ROTORUA.

GRANDE VUE,
R O T O R U A.

Situated centrally, with balconies overlooking the Beautiful Government Gardens, this house is without a rival in Rotorua.

The Government Bath Buildings, in the same grounds, are but two or three minutes' walk from the house, thus affording special bathing facilities to patrons.

GRANDE VUE has recently been taken over by

MR. GEORGE BROWN,

in conjunction with MRS. REES; both for many years in charge of the Grand Hotel, Rotorua. Visitors to Rotorua can rely on finding their every comfort supplied at Grande Vue.

Tariff, 9s. per day; £2 15s. per week.

Telegrams: "Grande Vue, Rotorua."

Thos. Cook and Son, Booking Agents.

THE GEYSER HOTEL,
R O T O R U A.

Golf Links Adjoin the Hotel.

SITUATED AT WHAKAREWAREWA, THE AMPHITHEATRE OF

THE SPOUT BATH,

Free to Guests. Famous for its Extraordinary Cures of Rheumatism, Neuralgia, Lumbago, Sciatica, Kidney, Liver and other Complaints.

Five minutes from Rotorua. 'Bus Free from Station to Hotel for Guests.

Tariff from 12s. per day. From £3 10s. per week.

ROX WOODWARD Proprietor (Late Grand and Palace Hotels, Rotorua, and Royal Hotel, Auckland.)

RIVERTON.

WHERE TO STAY IN RIVERTON. RAILWAY HOTEL,

Directly Opposite Railway Station.

Ideal Hotel for a holiday at the seaside. Everything of the very Best.

CHAS. DE CLIFFORD .. Proprietor.

SANSON.

JUNCTION HOTEL,
S A N S O N.

MRS. Z. L. BUCKERIDGE, PROPRIETRESS.

Wanganui to Wellington favourite stopping place for motorists and travellers. Accommodation paddocks for stock. Splendid duck-shooting in vicinity, big bags to be got. Everything of the very Best. A hearty welcome to all. 'Phone No. 6. P.O. Box 7.

SHANNON.

ALBION HOTEL,
S H A N N O N.

The popular house of call. New, commodious; electric light. Most up-to-date on the Manawatu line. First-class accommodation. Speight's Ale on draught. All wines and spirits true to label. A welcome to all. Tariff, 8s. per item. 'Phone 14.

W. McKEGG Proprietor. (Late of Otaki.)

TAKAKA.

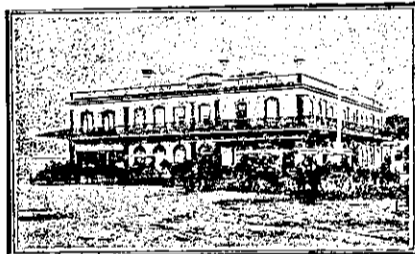
GLOBE HOTEL,

WAITAPU, TAKAKA DISTRICT.

Ranks among the First-class Hotels throughout the Province, and is a favourite resort for all tourists, commercial men and travellers generally. Telephonic and telegraphic connection on premises. All kinds of vehicles and horses for hire at shortest notice. Best brands only of ales, wines and spirits dispensed; a trial solicited; Dodsons and Sons' ales on draught.

JAMES PAGE Proprietor.

TAURANGA.



STAR HOTEL,
T A U R A N G A.

The Leading Commercial Hotel in the Bay of Plenty. Best accommodation. Excellent cuisine. Hot and cold baths. Telegrams: "Star, Tauranga." 'Phone 6. P.O. Box 21.

A. BROWN Proprietor.

THAMES.

SALUTATION HOTEL,
MARY STREET, THAMES.

HARRY BROWNLEE ... Proprietor.

ONLY SPEIGHT'S ALE ON DRAUGHT.

Best Ale in Town.

EXCHANGE HOTEL,
POLLEN STREET, THAMES.

GREGOR A. HODGE Proprietor.

A sport who turns no man down, and has Speight's Draught Ale of the very Best to offer. Know him and you have a friend for life.

POST OFFICE HOTEL,
MARY STREET, THAMES.

Visitors will find here excellent accommodation and the very best Wines, Spirits and Ales.

MRS. W. MORRISON .. Proprietress.

TIMARU.

THE DOMINION HOTEL,
T I M A R U.

The most modern and up-to-date Hotel in Timaru, overlooking Caroline Bay and the harbour. Everything new inside and out. Absolutely fireproof; electric light. Replete with every convenience; bath-rooms (hot and cold) on every floor. Moderate tariff.

JOHN REILLY Proprietor.

TIMARU.

CLUB HOTEL,
T I M A R U.

Mr. N. Quirk, late of Tauranga, has taken over the above well-known Hotel, and offers excellent accommodation to travellers. Trains passing through stay sufficient time to enable passengers to obtain refreshments.

N. QUIRK Proprietor.

TIRAU.

OXFORD ROYAL HOTEL,
T I R A U.

Situated between Cambridge and Rotorua. First-class accommodation for visitors, motorists and the travelling public.

W. F. BELL Proprietor.

UPPER HUTT.

PROVINCIAL HOTEL,
U P P E R H U T T.

The Provincial offers all the comforts of a first-class home. The only hotel in the township. First-class stabling accommodation. Wines, Beers and Spirits of the very Best. Letters and telegrams promptly attended to.

MRS. M. E. YOUNG .. Proprietress.

WAIKARI.

GREAT NORTHERN HOTEL,
W A I K A R I.

J. McTAGGART Proprietor.

The favourite house of motorists between Christchurch and Kaikoura. Opposite Railway Station. Everything of the Best. All liquors true to label. Terms moderate.

WAIPAWA.

COMMERCIAL HOTEL,
W A I P A W A.

Private suites of apartments and every convenience for the accommodation of the public. Wines, spirits and beer of the Best Quality only. A first-class billiard table. Stabling and paddock accommodation.

W. PELLOW Proprietor.

WAIROA.

WAIROA Hawke's Bay. The Commercial Travellers' Home. Visitors to Wairoa are assured of a hearty welcome at the

WAIROA HOTEL.

Everything of the very best. Excellent Cuisine and First-class Accommodation.

J. DICKSON Proprietor (Late of Masonic Hotel, Napier.)

WANGANUI.

METROPOLITAN HOTEL,
Opp. Railway Station, WANGANUI.

J. HANNAN Proprietor (Late of Hannan's Hotel, Marton.)

Under new management. House conducted on first-class lines. Everything of the very Best. Night porter kept. Visitors called for early trains. A hearty welcome to all. Tariff, 7s. per day. 'Phone 84. P.O. Box 138.



Under Vice-Regal Patronage.

WANGANUI'S LEADING HOTEL.

Don't be satisfied with anything less than the best of comfort. Whether on business or pleasure bent you get most out of your trip by staying at "The House of Quality and Refinement." Wire or write for reservations.

THE RUTLAND HOTEL,
VICTORIA AVENUE, WANGANUI.

WELLINGTON.

POST OFFICE HOTEL,
W E L L I N G T O N.

Offers first-class accommodation at a moderate tariff. Excellent cuisine. Telegrams, "Post Office Hotel, Wellington." 'Phone 327.

MATTHEW MUIR Proprietor.

OCCIDENTAL HOTEL,
LAMBTON QUAY, WELLINGTON.

In close proximity to all Government Offices and wharves. All trams stop at front door. Favourite hostelry with travelling public. A home away from home. Everything up-to-date. This popular house of call has been taken over by Mr. J. Lamb, formerly of Dannevirke and Wellington, who extends a welcome to all old and new friends.

J. LAMB Proprietor.

N.Z. MOTOR & CYCLE JOURNAL.

Published Monthly.

Of all Newsagents and Booksellers. PRICE, 6d.