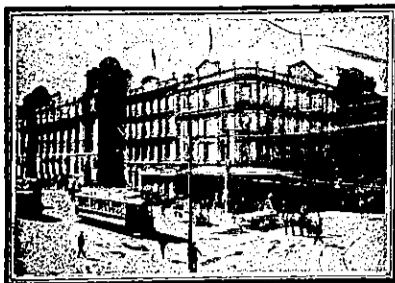


THE TOURIST AND TRAVELLER. WHERE TO STAY AND WHERE TO GO.

AUCKLAND.



The.....
W A V E R L E Y
 HOTEL and
 RESTAURANT,
 QUEEN STREET, AUCKLAND.
 European Plan.
ARTHUR A. PAAPE Proprietor.

BULLS.

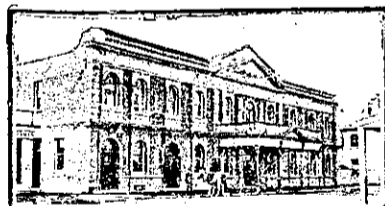
CRITERION HOTEL,
 B U L L S.
 EXCELLENT ACCOMMODATION FOR
 THE TRAVELLING PUBLIC.
 Choicest Brands of Liquors in Stock.
W. H. HOSKING Proprietor.

RANGITIKEI HOTEL,
 B U L L S.
H. McMANAWAY notifies the Travel-
 ling Public that he has taken over the
 management of the above Hotel, which
 has been thoroughly renovated and re-
 furnished, and is now up-to-date in
 every department. Best Wines, Spirits
 and Ales in Stock. First-class table
 and accommodation. 'Phone No. 4.
H. McMANAWAY Proprietor.

CAMBRIDGE.



NATIONAL HOTEL,
 C A M B R I D G E.
 Opposite the Town Hall and Jubilee
 Gardens. These fine, new, brick build-
 ings are handy to the Railway Station
 and the Famous Cambridge Domain.
 Undoubtedly the best appointed hotel in
 the Waikato. Climate unrivalled. Ex-
 cellent Cuisine. Moderate Tariff. The
 Best Wines, Spirits and Beer only are
 served. Letters and telegrams promptly
 attended to. Sample rooms. 'Phone 131.
MRS. C. A. TULLY Proprietress.



MASONIC HOTEL,
 C A M B R I D G E.
 New and up-to-date brick house, just
 rebuilt. All modern conveniences.
 Leading family and commercial hotel.
 Under personal supervision. 'Phone 1.
VICTOR CORNAGA Proprietor.

CENTRAL HOTEL,
 C A M B R I D G E.
 FOR TRAVELLERS AND TOURISTS.
 This Hotel is Centrally Situated, being
 Opposite Post Office.

The most Convenient Hotel in Cam-
 bridge. Quiet, central, refined. Letters
 and Telegrams promptly attended to.
 Only the Best Liquors Stocked.
W. J. BROWN Proprietor.

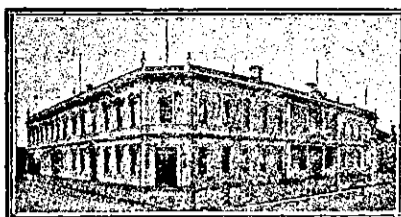
CARTERTON.

CLUB HOTEL,
 C A R T E R T O N.
W. REDMOND Proprietor.
 A HOME AWAY FROM HOME. A
 WELCOME TO ALL.
 Only Best of Wines, Spirits and Ales
 Stocked.

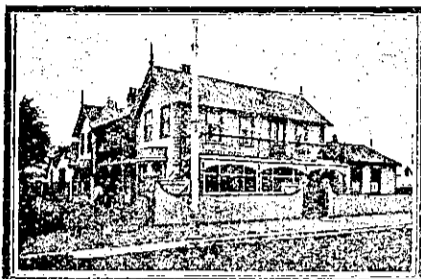
N.Z. MOTOR & CYCLE JOURNAL.
 Published Monthly.

Of all Newsagents and Booksellers.
 PRICE, 6d.

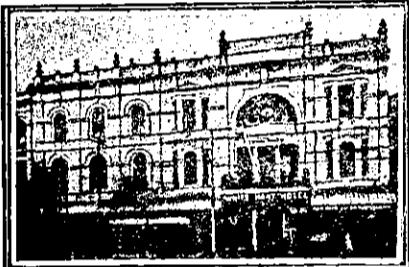
CHRISTCHURCH.



WHERE TO STAY IN CHRIST-
 CHURCH,
STOREY'S HOTEL,
 Right Opposite Railway Station.
 Convenient to all parts of the City and
 Suburbs. Electric cars start from door.
G. S. JAMES Proprietor.



NEW BRIGHTON HOTEL,
 CHRISTCHURCH.
 Now under the proprietorship of the
 well-known **Mannie Edwards**. An up-
 to-date Hotel, possessing all the advan-
 tages of a popular seaside resort. Hot
 salt water baths, bathing, etc. A 20min.
 car service to and from the City. Visit-
 ors will find Accommodation, Cuisine,
 etc., unsurpassed. Tariff, 7s. per day.
M. EDWARDS Proprietor.



WHITE HART HOTEL,
 CENTRE CHRISTCHURCH.
 Tariff, 10s. per diem.
S. J. ALLEN Proprietor.

WINDSOR PRIVATE HOTEL
 MANCHESTER ST., CHRISTCHURCH.
 Close to Railway Station and Centre
 of City. Tariff, 6s. per day; 30s. per
 week.
MRS. N. J. JOHNSTON, Proprietress.

CROMWELL.

GOLDEN AGE HOTEL,
 C R O M W E L L.
MR. ROBERT HAIG, having taken
 over the above well-known Hotel, offers
 Visitors to Cromwell Excellent Accom-
 modation and Attention. First-class
 Billiard Table. Tariff, 6s. per day.

DUNEDIN.



GLADSTONE HOTEL,
 MACLAGGAN STREET, DUNEDIN.
 The most central-
 ly situated Hotel in
 the City. First-
 class Accommoda-
 tion for Tourists,
 Travellers and
 Boarders. Suites
 of rooms for fam-
 ilies. Charges mod-
 erate. A Special
 Feature: 1s. Lunch,
 from 12 to 2 p.m.
 Hot Cold and
 Shower Baths. The
 Very Best Wines,
 Ales and Spirits
 Supplied.
JOHN COLLINS Proprietor.

**NEW ZEALAND'S ROLL OF
 HONOUR.**
 IN MEMORIAM CARDS.
 With Soldier's Portrait Similar to that
 appearing in "Sporting Review."
ARTHUR CLEAVE AND CO., LTD.,
 HIGH STREET, AUCKLAND.

DUNEDIN.

GRIDIRON HOTEL,
 PRINCES STREET, SOUTH DUNEDIN.
 Just above the G.P.O. Trams stop
 opposite Hotel. Good accommodation
 for Travellers and Travellers. Terms
 moderate. The Gridiron is known for its
 excellent liquors. Electric light.
SAMUEL W. GEDDES ... Proprietor.

PROVINCIAL HOTEL,
 STAFFORD STREET, DUNEDIN.
MR. A. HARVEY, having taken over
 the above well-known Hotel, offers Visit-
 ors every comfort and attention. Hot
 and cold baths and all modern conven-
 iences. Excellent Cuisine. Moderate
 Tariff.
A. HARVEY Proprietor.

EAST OXFORD.

HAREWOOD ARMS,
 EAST OXFORD.
 Excellent accommodation. The fav-
 ourite stopping place of visitors to the
 Ashley Gorge. Near Railway Station.
H. COLLINS Proprietor
 (Late of Timaru.)

FEATHERSTON.

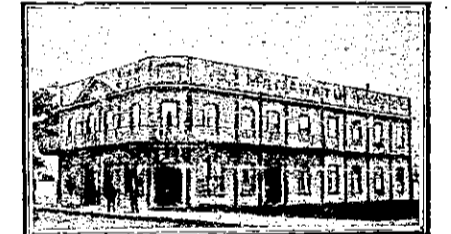
EMPIRE HOTEL,
 FEATHERSTON.
H. E. CARD Proprietor.

The Recognised Commercial Travel-
 lers House for the Wairarapa. Newly
 furnished. Extra bathrooms; hot and
 cold showers. Everything up-to-date.
 Tariff, 10/6 per day. Special rate for
 Commercial.

FEILDING.

HASTIE'S HOTEL,
 FEILDING.
 Opposite Post Office and three minutes
 from Railway Station. Night porter
 in attendance. First-class accommoda-
 tion. Excellent cuisine. Tariff, 8s. 6d.
 'Phone 34. P.O. Box 66.
S. W. R. EVANS Proprietor.

FOXTON.



MANAWATU HOTEL,
 F O X T O N.
PERCY LUMSDEN Proprietor.

This House has been the recognised
 rendezvous of the Theatrical Profession.
 Visitors will find every comfort and con-
 venience at this well-known House.
 Only the Best Brands of Wines, Spirits
 and Ales Stocked.

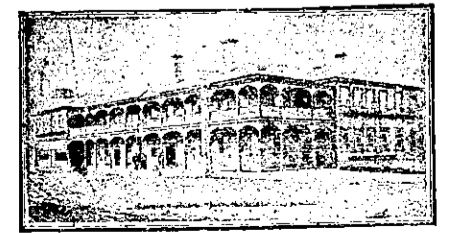
GREYMOUTH.

ROYAL HOTEL,
 GREYMOUTH,
 Opposite Railway Station.
 The most popular house of call on
 the West Coast. Everything of the
 very best. 'Phone 51. P.O. Box 89.
H. WEBB Proprietor.

HAKATARAMEA.

TERMINUS HOTEL,
 HAKATARAMEA.
 Recently renovated and refurbished
 throughout, is now one of the Finest
 Houses in the district. Everything possi-
 ble will be done to ensure the comfort
 of guests. Moderate tariff. Excellent
 accommodation. Choicest brands of
 liquors.
J. BOYLE Proprietor.

HAMILTON.



HAMILTON HOTEL,
 H A M I L T O N.
P. S. RYAN Proprietor.
 This commodious and up-to-date Hotel
 is replete with every modern conveni-
 ence for the comfort of visitors. The
 cuisine is first-class. Tariff moderate.
 Only the best of liquors kept in stock.

KING'S COURT
 Private Hotel.
 UPPER QUEEN STREET,
 AUCKLAND.
 UP-TO-DATE, SELECT.
 Charmingly Situated in Three
 Acres of Ground, exquisitely laid
 out.
 Telegrams :
 "KING'S COURT, AUCKLAND."
 Terms Moderate.
G. ARROWSMITH .. Proprietor.
 (Late of New Plymouth.)
 'Phone 2256.

OCCIDENTAL HOTEL,
 VULCAN LANE,
 A U C K L A N D.
MRS. N. LYNCH Proprietress
 (Late of Clarendon and City Hotels,
 Auckland.)

AKAROA.
MADEIRA HOTEL,
 LAVAUD STREET, AKAROA.
W. H. PIPER (late Christchurch)
 wishes to inform the public of Akaroa
 and surrounding bays of the Peninsula
 and Christchurch that he has taken
 over the lease of the above Hotel, and
 that he is ready to accommodate Tour-
 ists and Visitors in his Commodious
 House. Madeira Hotel affords First-
 class accommodation. Tariff 6s. per day.

BLLENHEIM.
ROYAL HOTEL,
 B L E N H E I M.
 THE SPORTSMAN'S HOME.
 TARIFF, 4/6 PER DAY, 25/- WEEK.
R. CANN Proprietor.
 (Late Royal Hotel, Nelson.)

EMPIRE HOTEL,
 B L E N H E I M.
 In intimating that I have taken over
 the above Hotel, I have every confidence
 that past patrons will renew their sup-
 port to the new regime. The public
 generally and commercials will have
 every attention to their home comforts,
 and all sorts of liquors will be found
 to be of the very Best. Nothing is
 stocked that will be kept, as the very
 best only will be sold, and good quality
 will not keep; it will have a quick sale.
TOM KEATING Proprietor.

BLUFF.
CLUB HOTEL,
 B L U F F.
 EXCELLENT ACCOMMODATION FOR
 THE TRAVELLING PUBLIC.
 Only the Choicest Brands of Liquors.
W. WALKER Proprietor.

MEMORIAL CARDS.
 Fine quality cards containing Inset of
 four pages with badge, particulars, verse
 and photograph printed thereon, may be
 obtained from the Office of "The N.Z.
 Sporting and Dramatic Review." No
 extra charge is made for the repro-
 duction of the block, made from the
 photograph, which has appeared in this
 paper under "New Zealand's Roll of
 Honour."

ARTHUR CLEAVE & CO., LTD.,
 Printers and Publishers,
 HIGH STREET AND VULCAN LANE,
 AUCKLAND.