

THE TOURIST AND TRAVELLER. WHERE TO STAY AND WHERE TO GO.

PANMURE.

PANMURE HOTEL,
PANMURE.

And **DYER'S HALL, PANMURE.**

HENRY H. DYER Proprietor.

Wines and Spirits of the Best Brands only stocked. A hearty welcome always awaiting old friends and new faces.

PAPAKURA.



PAPAKURA HOTEL,
PAPAKURA.

The Leading Commercial Hotel in the District. Excellent accommodation for visitors, travellers and tourists. First-class table. Wines, Spirits and Ales of the best quality. Afternoon tea for motoring parties a specialty. Good stabling and paddocks. Horses and traps for hire. Tariff moderate.
J. RYAN Proprietor.

PATEA.

THE ALBION HOTEL,
PATEA.

First-class accommodation for tourists, families and travellers. Wines, Ales and Spirits of the Best.

J. A. COOGAN Proprietor.

PETONE.

CENTRAL HOTEL,
JACKSON STREET, PETONE.

Under New Management. This well-known and popular house of call has been taken over by Mrs. H. Maddock, late of Blenheim, who extends a hearty welcome to her many Marlborough friends. All wines, spirits and liquors true to label.

MRS. H. MADDOCK Proprietress.

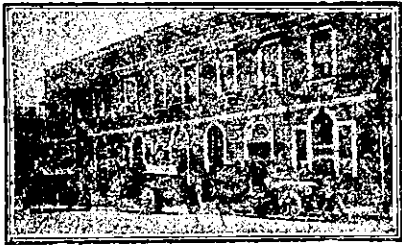
QUEENSTOWN.

GRAND VIEW
PRIVATE BOARDING ESTABLISHMENT, QUEENSTOWN.

Excellent accommodation for Tourists. Occupying a position on the rise, it commands an uninterrupted view of the town, the Remarkables and the Lakes. Within 2min. of the wharf. Letters and telegrams receive prompt attention.

MISSES POWELL .. Proprietresses.

REEFTON.

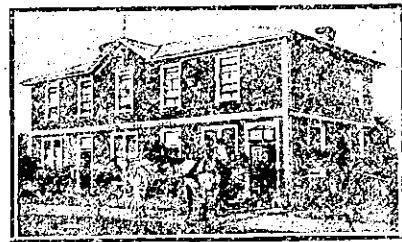


DAWSON'S HOTEL,
REEFTON.

The Leading Hotel in Reefton. Wines and Spirits of the very Best Brands.

JAMES S. VIAL Proprietor.

RICHMOND.



WHITE HART HOTEL,
RICHMOND.

J. V. HALL Proprietor.

(Late of Occidental Hotel, Hokitika.) The above well-known house on the Nelson West Coast Road has been taken over by Mr. Hall, who extends a hearty welcome to his many West Coast friends. All wines and spirits true to label. Harley's Prize Ales on draught. A welcome to all. The Sportsman's Hotel.

THE MOST UP-TO-DATE
WAR PICTURES APPEAR
in the
SPORTING AND DRAMATIC
REVIEW.

PRICE 8d.

RIVERTON.

WHERE TO STAY IN RIVERTON.

RAILWAY HOTEL,

Directly Opposite Railway Station.

Ideal Hotel for a Holiday at the Seaside. Everything of the very Best.

CHAS. DE CLIFFORD .. Proprietor.

ROTORUA.

GRANDE VUE,
ROTORUA.

Situated centrally, with balconies overlooking the beautiful Government Gardens, this House is without a rival in Rotorua.

The Government Bath Buildings in same grounds are but two or three minutes' walk from the House, thus affording special bathing facilities to patrons.

GRANDE VUE has recently been taken over by

MR. GEORGE BROWN,

in conjunction with **MRS. REES**; both for many years in charge of the Grand Hotel, Rotorua. Visitors to Rotorua can rely on finding their every comfort supplied at Grande Vue.

Tariff, 9s. per day; £2 15s. per week.

Telegrams: "Grande Vue," Rotorua.

THOS. COOK & SON, Booking Agents.

THE GEYSER HOTEL,
ROTORUA.

Golf Links Adjoin the Hotel.

SITUATED AT WHAKAREWAREWA,
THE AMPHITHEATRE OF
SPOUT BATH,

Free to Guests. Famous for its Extraordinary Cures of Rheumatism, Neuralgia, Lumbago, Sciatica, Kidney, Liver and other Complaints.

Five Minutes from Rotorua. Bus Free from Station to Hotel for Guests.

Tariff from 12s. per day.
From £3 10s. per week.

ROX. WOODWARD Proprietor.
(Late Grand and Palace Hotels, Rotorua, and Royal Hotel, Auckland.)

SANSON.

JUNCTION HOTEL,
SANSON.

MRS. Z. L. BUCKERIDGE,
PROPRIETRESS.

Wanganui to Wellington most favourite stopping place for motorists and travellers. Accommodation paddocks for stock. Splendid duck-shooting in vicinity, big bags to be got. Everything of the very best. A hearty welcome to all. Phone No. 6, P.O. Box 7.

SHANNON.

ALBION HOTEL,
THE POPULAR HOUSE OF CALL,
SHANNON.

New, Commodious, Electric Light; most up-to-date on the Manawatu Line. First-class Accommodation. Speight's Ale on Draught. All Wines and Spirits True to Label. A Welcome to all. Tariff 8s. per diem. Telephone 14.

W. McKEGG Proprietor.
(Late of Otaki.)

TAKAKA.

GLOBE HOTEL,
WAITAPU, TAKAKA DISTRICT.

Ranks among the First-class Hotels throughout the province, and is a favourite resort for all Tourists, Commercial Men and Travellers generally. Telephonic and telegraphic connection on the premises. All kinds of vehicles and horses for hire at shortest notice. Best brands only of Ales, Wines and Spirits dispensed. A Trial Solicited. Dodsons and Sons' Ales on Draught.

JAMES PAGE Proprietor.

MEMORIAL CARDS.

Fine quality cards containing inset of four pages with badge, particulars, verse and photograph printed thereon, may be obtained from the Office of "The N.Z. Sporting and Dramatic Review." No extra charge is made for the reproduction of the block, made from the photograph, which has appeared in this paper under "New Zealand's Roll of Honour."

ARTHUR CLEAVE & CO., LTD.,
Printers and Publishers,
HIGH STREET AND VULCAN LANE,
AUCKLAND.

TAUERU.

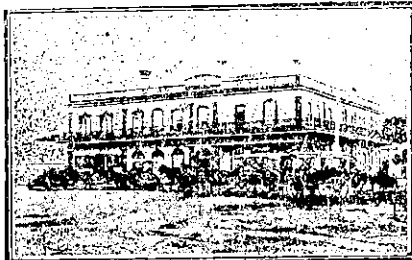
TAUERU HOTEL,

Eight miles from MASTERTON.

First Hotel on East Coast Route. Capital accommodation. Free House for everything. Staples' and Strauchan's Ales on Tap.

J. OLIVER Proprietor.
(Late of Napier.)

TAURANGA.



STAR HOTEL,
TAURANGA.

The Leading Commercial House in the Bay of Plenty. Best accommodation. Excellent Cuisine. Hot and cold baths. Telegrams: "Star, Tauranga." Phone 6. P.O. Box 21.

A. BROWN Proprietor.

THAMES.

SALUTATION HOTEL,
MARY STREET, THAMES.

HARRY BROWNLEE .. Proprietor.

ONLY SPEIGHT'S ALE ON DRAUGHT.

Best Ale in Town.

POST OFFICE HOTEL,
MARY STREET, THAMES.

Visitors will find here Excellent Accommodation, and the very Best Wines, Spirits and Ales.

MRS. W. MORRISON .. Proprietress.

TIMARU.

CROWN HOTEL,
T I M A R U.

Excellent accommodation and attention. Central location; handy to Caroline Bay, theatres, wharf and Railway. Nothing but the Best in the Bar.

R. BERTI Proprietor.

THE DOMINION HOTEL,
T I M A R U.

The most modern and up-to-date hotel in Timaru, overlooking Caroline Bay and the harbour. Everything new inside and out. Absolutely fireproof. Electric light and replete with every convenience. Bath-rooms (hot and cold water) on every floor. Moderate tariff.

JOHN REILLY Proprietor.

CLUB HOTEL.

T I M A R U.

Mr. N. Quirk, late of Tauranga, has taken over the above well-known Hotel, and offers Excellent Accommodation to Travellers. Trains passing through stay sufficient time to enable passengers to obtain refreshments.

N. QUIRK Proprietor.

TIRAU.

OXFORD ROYAL HOTEL,
T I R A U.

Situated between Cambridge and Rotorua. First-class accommodation for Visitors, Motorists and the Travelling Public.

W. F. BELL Proprietor.

UPPER HUTT.

PROVINCIAL HOTEL,
UPPER HUTT.

The Provincial offers all the Comforts of a First-class Home. The only hotel in the township. First-class stabling accommodation. Wines, Beers and Spirits of the very Best. Letters and Telegrams promptly attended to.

MRS. M. E. YOUNG .. Proprietress.

WAIKARI.

GREAT NORTHERN HOTEL,
WAIKARI.

J. McTAGGART Proprietor.

The favourite house of motorists, between Christchurch and Kaikoura. Opposite Railway Station. Everything of the best. All Liquors true to label. Terms moderate.

N.Z. MOTOR & CYCLE JOURNAL.

Published Monthly.

Of all Newsagents and Booksellers.
PRICE, 6d.

Printed and Published by **ARTHUR CLEAVE**, of Ellerslie, at his Registered Printing Office, Vulcan Lane, Auckland, for the Proprietors. Arthur Cleave and Co., Ltd.,
THURSDAY, APRIL 11, 1918.

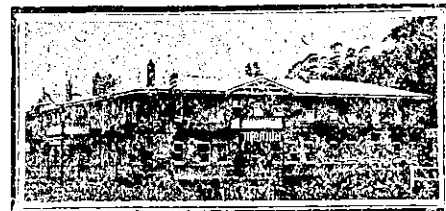
WAIPAWA.

COMMERCIAL HOTEL,
W A I P A W A.

Private Suites of Apartments and every Convenience for the accommodation of the public. Wines, Spirits and Beer of the Best Quality only. A First-class Billiard Table. Stabling and paddock accommodation.

W. FELLOW Proprietor.

WAIPIKURAU.



TAVISTOCK HOTEL,
WAIPIKURAU, HAWKE'S BAY.

The above Hotel has just been rebuilt and refurnished throughout, and is now replete with every convenience. Waipukurau is the noted health resort of the province. Good fishing and shooting. Excellent accommodation for the travelling public.

DONALD McLEOD Proprietor
(Late Whangarei and Feilding.)

WAIROA.

WAIROA Hawke's Bay.
The Commercial Travellers' Home. Visitors to Wairoa are assured of a hearty welcome at the

WAIROA HOTEL,

Everything of the very best. Excellent Cuisine and First-class Accommodation.

J. DICKSON Proprietor.
(Late of Masonic Hotel, Napier.)

WANGANUI.

METROPOLITAN HOTEL,

Opp. Railway Station, WANGANUI.

J. HANNAN Proprietor.

(Late of Hannan's Hotel, Marton.)

Under New Management. House conducted on first-class lines. Everything of the very Best. Night porter kept; visitors called for early trains. A hearty welcome to all. Tariff 7s. per day. Phone 84. P.O. Box 138.

THE RUTLAND HOTEL,
VICTORIA AVENUE, WANGANUI.

WELLINGTON.

PATRONISED BY ROYALTY.

HOTEL CECIL,
WELLINGTON, NEW ZEALAND.

Opposite Government Railway Station and Junction of City Tramways, and Adjoining Parliamentary Buildings.

EXCELLENT CUISINE AND EVERY MODERN CONVENIENCE.

P.O. Box 372. Phone No. 554.
Telegraphic Code, "Cecil."

TARIFF ON APPLICATION.

COOK'S COUPONS ACCEPTED.

JAMES McPARLAND,
Proprietor.

POST OFFICE HOTEL,
WELLINGTON.

Offers First-class Accommodation at a Moderate Tariff. Excellent Cuisine. Telegrams, Post Office Hotel, Wellington. Phone 2827.

MATTHEW MUIR Proprietor.

OCCIDENTAL HOTEL,
LAMBTON QUAY, WELLINGTON.

In close proximity to all Government Offices and wharves. All trains stop at front door. Favourite hostelry with travelling public. A home away from home. Everything thoroughly up-to-date. This popular house of call has been taken over by **Mr. J. Lamb**, formerly of Dannevirke and Wellington, who extends a welcome to all old and new friends. **J. LAMB**, Proprietor.