

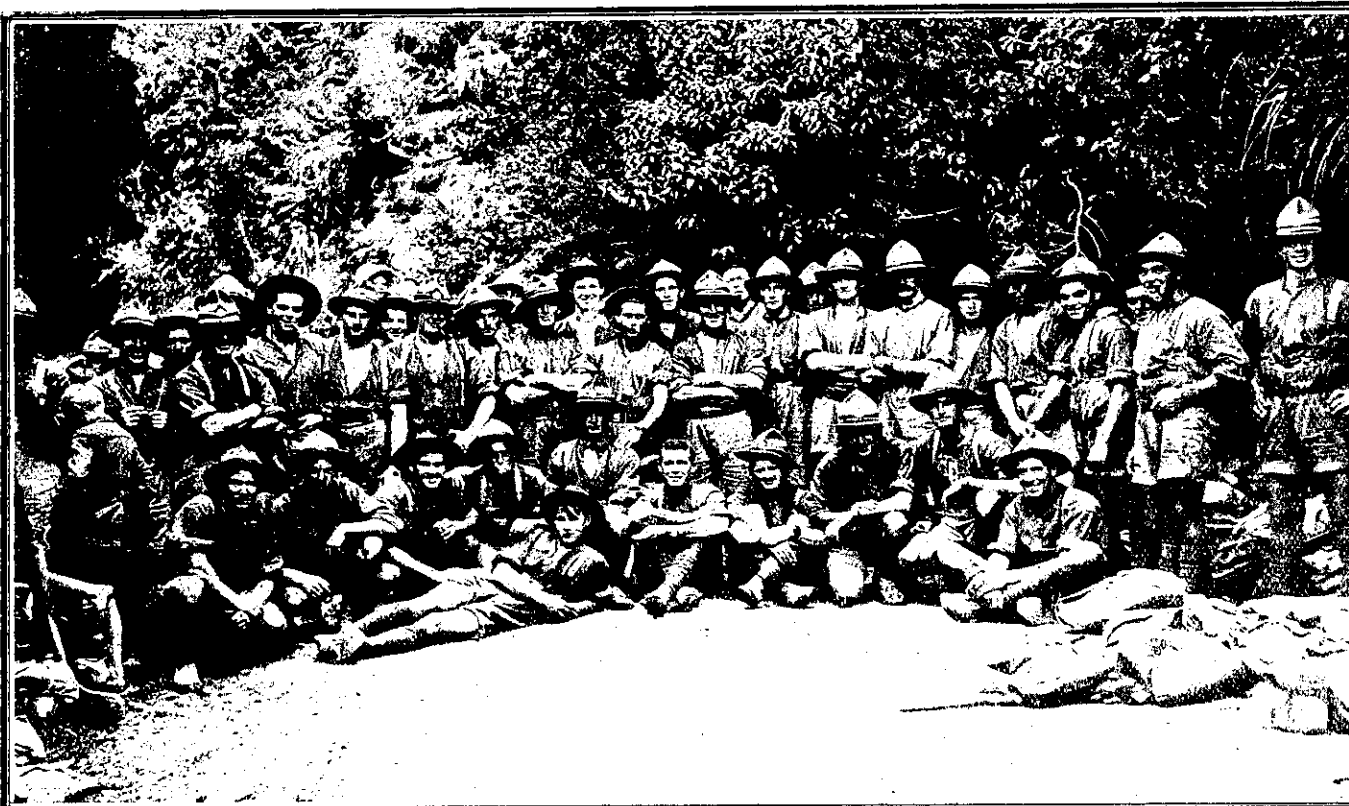
Cheery Members of the 36th Reinforcements engaged in Making the Ascent of the Rimutaka Ra



HAWKE'S BAY AND GISBORNE SOLDIERS, MEMBERS OF THE 9TH PLATOON, C COMPANY.



WAIRARAPA BOYS BELONGING TO THE 7TH PLATOON, B COMPANY



NONE THE WORSE FOR THEIR ARDUOUS MARCH. GROUP OF MEMBERS OF THE "36THS" POSING FOR THE "REVIEW" PHOTOGRAPHER.



ENJOYING A REST NEAR THE SUMMIT OF THE RIMUTAKAS—MEMBER COMPANY.