

THE TOURIST AND TRAVELLER. WHERE TO STAY AND WHERE TO GO.

CROMWELL.

GOLDEN AGE HOTEL,
CROMWELL.

MR. ROBERT HAIG, having taken over the above well-known Hotel, offers Visitors to Cromwell Excellent Accommodation and Attention. First-class Billiard Table. Tariff, 6s. per day.

DANNEVIRKE.

CLUB HOTEL,
DANNEVIRKE.

Right opposite Railway Station. Most Convenient and Popular Hotel in the town. All trains stop sufficient time for Refreshments. Every civility and attention. Everything of the very Best. The Travelling Public Specially Catered for.

CHRIS. JENSEN Proprietor.
(Late of the Masonic.)

DUNEDIN.

GLADSTONE HOTEL,
MACLAGGAN STREET, DUNEDIN.

The most centrally situated Hotel in the City. First-class Accommodation for Tourists, Travellers and Boarders. Suites of rooms for families. Charges moderate. A Special Feature: 1s. Lunch from 12 to 2 p.m. Hot Cold and Shower Baths. The Very Best Wines, Ales and Spirits supplied.

JOHN COLLINS Proprietor.

GRIDIRON HOTEL,
PRINCES STREET, SOUTH DUNEDIN.

Just above the G.P.O. Trams Stop Opposite Hotel. Good Accommodation for Visitors and Travellers. Terms Moderate. The Gridiron is known for its Excellent Liquors. Electric light throughout.

SAMUEL W. GEDDES .. Proprietor.

PROVINCIAL HOTEL,
STAFFORD STREET, DUNEDIN.

MR. A. HARVEY, having taken over the above well-known Hotel, offers Visitors every Comfort and Attention. Hot and Cold Baths and all Modern Conveniences. Excellent Cuisine. Moderate Tariff.

A. HARVEY Proprietor.

EAST OXFORD.

HAREWOOD ARMS,
EAST OXFORD.

Excellent accommodation. The favourite stopping place of visitors to the Ashley Gorge. Near Railway Station.

H. COLLINS Proprietor.
(Late of Timaru.)

FEATHERSTON.

EMPIRE HOTEL,
FEATHERSTON.

H. E. CARD Proprietor. The Recognised Commercial Travellers House for the Wairarapa. Newly Furnished. Extra Bathrooms; Hot and Cold Showers. Everything Up-to-date. Tariff 10/6 per day. Special Rate for Commercials.

FEILDING.

HASTIE'S HOTEL,
FEILDING.

Opposite Post Office and three minutes from Railway Station. Night porter in attendance. First-class Accommodation. Excellent Cuisine. Tariff, 8s. 6d. Phone 34. P.O. Box 66.

S. W. R. EVANS Proprietor.

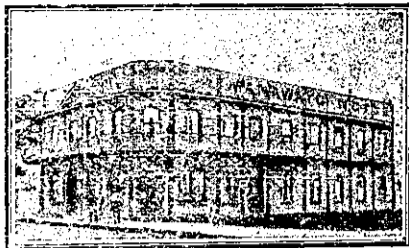
NOW IS THE TIME TO
ADVERTISE.

If business is dull—advertise and make it good. If business is good—advertise and make it better.

THE SPORTING AND DRAMATIC
REVIEW

is a live advertising proposition.

FOXTON.



MANAWATU HOTEL,
FOXTON.

PERCY LUMSDEN Proprietor. This House has been the recognised rendezvous of the Theatrical Profession. Visitors will find Every Comfort and Convenience at this well-known House. Only the Best Brands of Wines, Spirits and Ales Stocked.

GREYMOUTH.

ROYAL HOTEL,

Opposite Railway Station,
GREYMOUTH.

The most popular house of call on the West Coast. Everything of the very Best. Telephone 51. P.O. Box 89.

H. WEBB Proprietor.

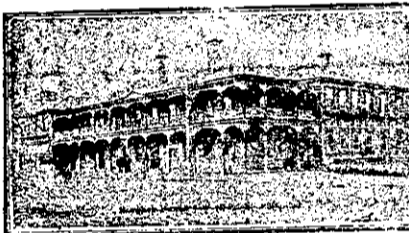
HAKATARAMEA.

TERMINUS HOTEL,
HAKATARAMEA.

Recently Renovated and Refurnished throughout, is now one of the Finest Houses in the district. Everything possible will be done to ensure the Comfort of Guests. Moderate Tariff. Excellent Accommodation. Choicest Brands of Liquors.

J. BOYLE Proprietor.

HAMILTON.



HAMILTON HOTEL,
HAMILTON.

P. S. RYAN Proprietor. This Commodious and Up-to-date Hotel is replete with every Modern Convenience for the Comfort of Visitors. The Cuisine is First-class. Tariff Moderate. Only the Best of Liquors kept in Stock.

HANMER SPRINGS.

CLARENCE HOUSE,
HANMER SPRINGS.

An Ideal house for visitors, within 1min. of P.O., Bath House, etc. Tariff 7s. per day; 35s. per week. Special arrangements made with visitors staying over one week. Letters and telegrams attended to.

E. HARKESS Proprietor.

HASTINGS.

GRAND HOTEL,

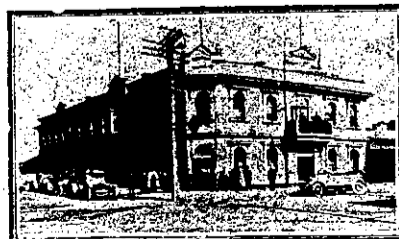
HASTINGS.

ENTIRELY FIREPROOF THROUGH-
OUT.

OVER 100 WELL-FURNISHED,
UP-TO-DATE BEDROOMS.

Eight First-class Sample Rooms.

THOS. J. BENNETT Proprietor.



HASTINGS HOTEL,
HASTINGS.

First-class accommodation. Wines all true to label. Only Speight's Ale on draught. Mr. Diamond will be pleased to meet old friends. Phone 108.

CHARLES DIAMOND Proprietor.
(Late of Albion Hotel, Patea, and Club Hotel, Stratford.)

HASTINGS.

PACIFIC HOTEL,
HASTINGS.

ALF. ELLINGHAM, the well known sport, extends a Welcome to his many friends throughout New Zealand. First-class Cuisine. Moderate Tariff. Everything right up-to-date.

A. J. ELLINGHAM Proprietor.

**STORTFORD LODGE
HOTEL,**

HASTINGS.

This House will make a Speciality of Stocking only the Best Wines and Spirits. The Cuisine is under able management, and visitors and families will receive every attention. Eleven loose boxes and paddocks. Tariff 4/6 per day.

E. A. GRENSIDE Proprietor.

HAVELOCK.

**SCOTT'S
POST OFFICE HOTEL,**

HAVELOCK.

FAVOURITE STOPPING PLACE FOR
TOURISTS AND TRAVELLERS.
For the Best of Cheer (liquid and solid). Accommodation, Civility and Cleanliness.

When in Havelock be Sure and Call if only for a Refreshing Glass of SPEIGHT'S SPARKLING XXX.

The Best Table in Town. All Treated alike, and all Meals 1s. If you like a Home away from Home, well you couldn't do better than put up at the Old Favourite Hotel.

Good Stabling, Paddocks, Garage and Sample Rooms. Booking Office for Newman Bros.' Passenger Cars. Phone 12.

P. J. O'DONOGHUE Proprietor.

HAWERA.

EMPIRE HOTEL,
Corner High St. and Princes St.,
HAWERA.

FIRST-CLASS ACCOMMODATION
For
TOURISTS AND TRAVELLERS.

Commercial Rooms.
Every Comfort and Convenience.

EXCELLENT CUISINE.

Wines, Ales and Spirits of the Best.

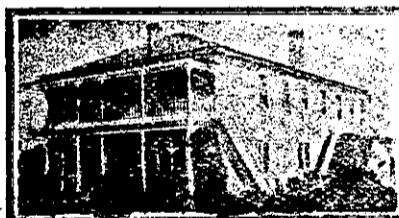
E. H. CUCKSEY Proprietor.

THE CENTRAL HOTEL,
HAWERA.

The above Hotel has been rebuilt and is now open to guests. Visitors and Travellers will find everything new, and can rely upon getting every comfort and attention. Electric light throughout. Every modern convenience.

MRS. M. CRAMP Proprietress.

HELENSVILLE.



HINEMOA HOUSE,
HOT SPRINGS, HELENSVILLE.

Adjoining Sanatorium Grounds. Replete with every Modern Convenience. Hot Mineral and Swimming Baths on Premises, free to Guests. Motor service; trips arranged. Tariff 8s. per day; £2 10s. per week.

MRS. G. S. NIELD Proprietress.

HOKIANGA RIVER.

HOREKE HOTEL,
HOKIANGA RIVER.

Under new management. First-class accommodation for visitors, tourists and commercials. Good stabling and paddocking. Billiards.

W. QUEENIN Proprietor.

HOKITIKA.



KELLER'S HOTEL,
HOKITIKA.

First-class accommodation for the travelling public. Only Best Brands of Wines and Spirits kept.

W. KELLER Proprietor.

INGLEWOOD.

INGLEWOOD HOTEL,
INGLEWOOD.

A. LAING Proprietor.
(Late of Woodville.)
First-class Accommodation for the Travelling Public.
Wines and Spirits of the Best Brands Only.

INVERCARGILL.



SOUTHLAND CLUB HOTEL,
INVERCARGILL.

Patronised by His Excellency the Governor and Suite. This hotel is most conveniently situated within 3min. of the Railway, Post and Telegraph Office. For the convenience of Commercial Travellers. Day porter meets all trains. Night porter always in attendance.

MISS F. CAVANAGH, Proprietress.

KAIAPOI.

MANDEVILLE HOTEL,
KAIAPOI.

The favourite house among Motorists and Travellers. Excellent Accommodation and Attention. Moderate Tariff.

D. F. McMULLAN Proprietor.
(Late of Christchurch.)

KUROW.

RAILWAY HOTEL,
KUROW.

Close to Railway Station.

The favourite house with commercials and tourists. Every attention. First-class accommodation. Excellent Cuisine. Wines, Ales and Spirits of the highest order.

J. A. GREER Proprietor.

LYTTELTON.

CANTERBURY HOTEL,
LYTTELTON.

Opposite Post Office, next to Railway Station and Wharves. The first and last, first coming in and last going out. First always for choice brands of liquors. MR. JAMES REED, late of Greymouth, and well known in Sporting Circles, is the Proprietor. Call when you're there.

LUMSDEN.

RAILWAY HOTEL,
LUMSDEN

JOS. CROSBIE Proprietor. Splendid accommodation for Tourists and Travellers visiting Lakes Manapouri and Te Anau. Queenstown passengers have sufficient time here for lunch. Telephone No. 9.

MANAIA.

COMMERCIAL HOTEL,
MANAIA.

J. W. HARCOURT Proprietor. Favourite stopping place. All Wines, Ales and Spirits true to label. Capital accommodation. Moderate Tariff. A hearty welcome to all old and new friends.

ARE YOU A MOTORIST?

Then You must read the

**N.Z. MOTOR AND CYCLE
JOURNAL.**

Monthly.

Of all Newsagents and Booksellers.

PRICE, 6d.

**NEW ZEALAND'S ROLL OF
HONOUR.**

IN MEMORIAM CARDS.

With Soldier's Portrait Similar to that appearing in "Sporting Review."

ARTHUR CLEAVE AND CO., LTD.,
HIGH STREET, AUCKLAND.