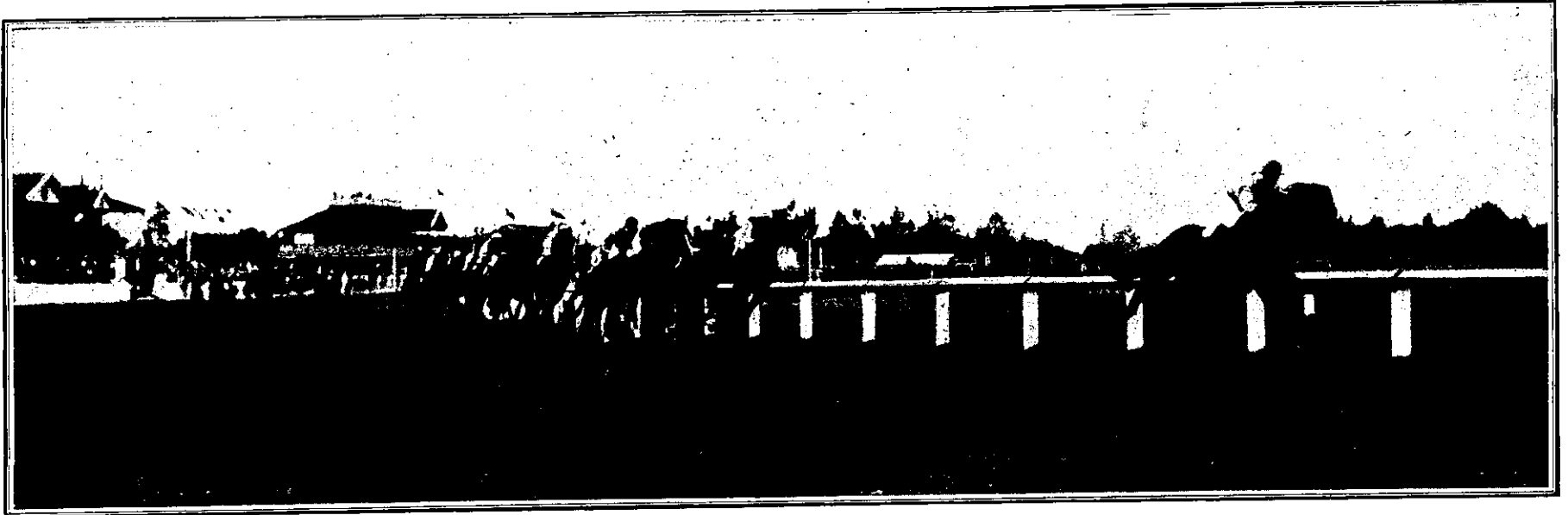


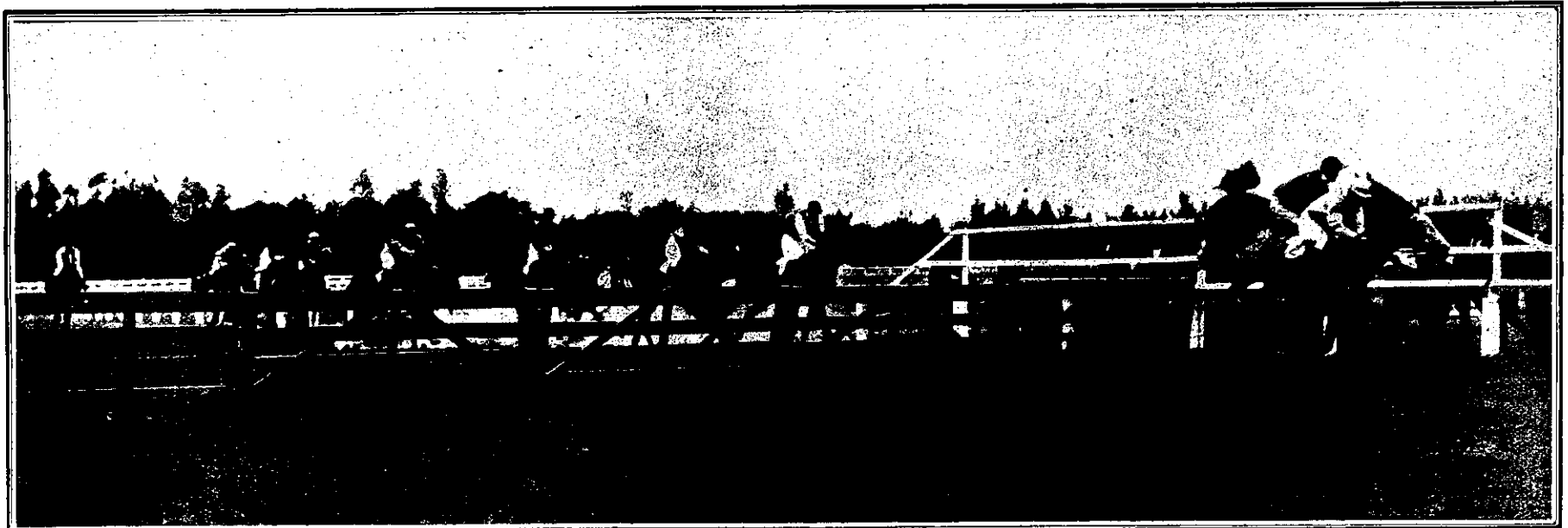
Interesting Contests at the Manawatu Racing Club's Summer Meeting.



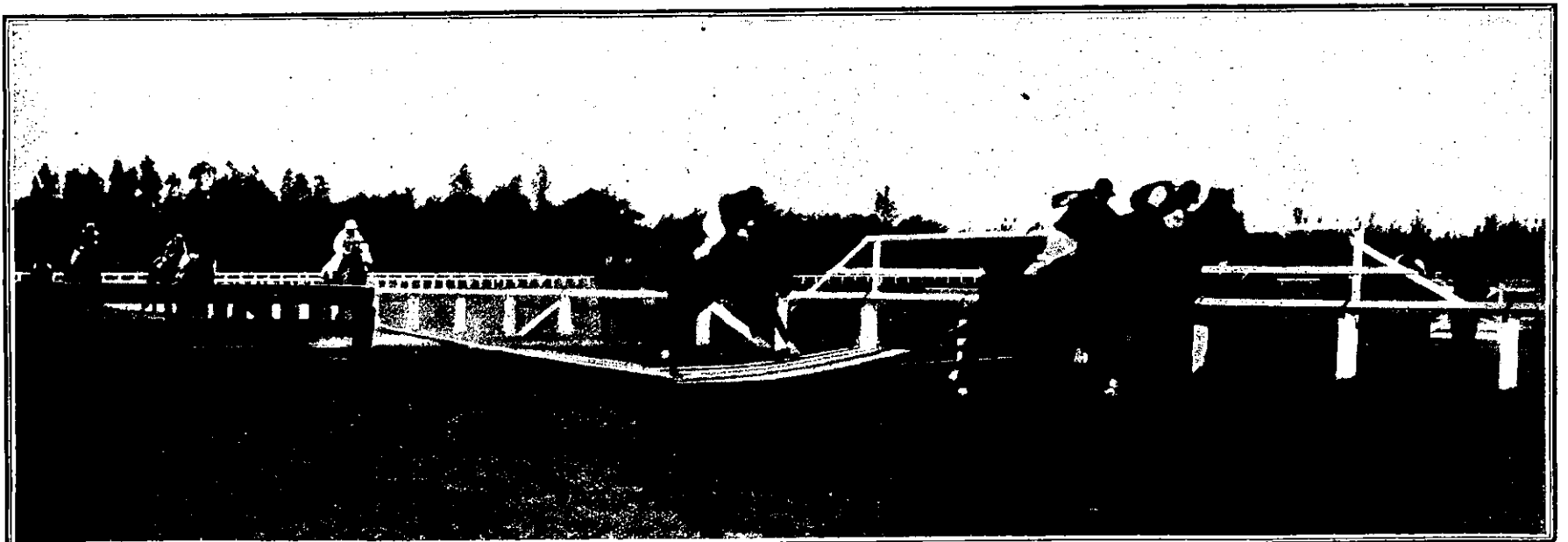
ROUNDING THE BEND OUT OF THE STRAIGHT IN THE MANAWATU CUP—IMPEDIMENT (L. H. HEWITT) HAS A COMMANDING LEAD FROM NOBLEMAN (L. MORRIS).



THE FINISH OF THE MANAWATU CUP (1½ MILES)—NOBLEMAN (L. MORRIS) WINS FROM CLIENT (C. PRICE), WITH MASTER MOUTOA (McBREARTY) THIRD, AND BONNIE MAID FOURTH.



THE FIELD AT THE FIRST OBSTACLE IN THE TOKOMARU HURDLES HANDICAP—KOHINAHINA (McKINNON) AND SAIL HOME (W. D. YOUNG) SHOWING THE WAY TO ARLINGTON (L. TRAILL) AND NICOMAR (GRAHAM).



AT THE LAST FENCE IN THE TOKOMARU HURDLES (1¾ MILES)—WANT (ON OUTSIDE) AND ARLINGTON (NEXT RAILS) LEADING COLORADO (THE WINNER), WHO IS SHOWN GETTING OVER THE BROKEN HURDLE.