



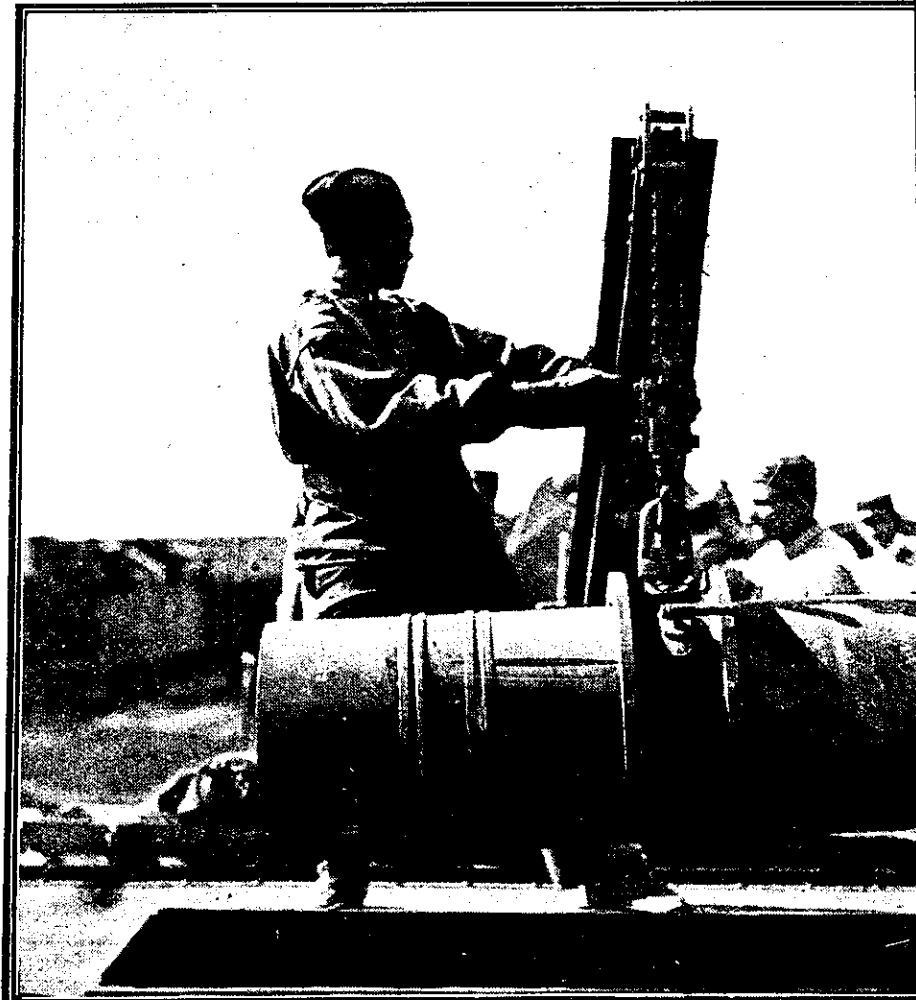
A SCENE OF DEVASTATION ON THE SOMME FRONT.—RUINS OF THE VILLAGE OF MAUREPAS, WHICH WAS COMPLETELY DESTROYED BY SHELL FIRE.



THE EXPLOSION OF A GIANT SHELL DURING OPERATIONS ON THE WESTERN FRONT.—PROFUSION OF PLOSIVES ARE SO POWERFUL AS TO TEAR HUGE CRATERS IN THE GROUND, AND CAUSE AN ERUPTION WHEN THEY STRIKE THEIR OBJECTS.



TREMENDOUS PROJECTILES USED BY THE FRENCH IN THEIR SUCCESSFUL BOMBARDMENT ON THE WESTERN FRONT. These costly shells are lifted by special cranes, and their destructive powers can well be imagined.



MONSTER SHELLS BEING PLACED ON TRUCKS READY FOR TRANSPORT TO EVERY POSITION OF THE FRONT.—[French Army Photographic Service. By courtesy.]