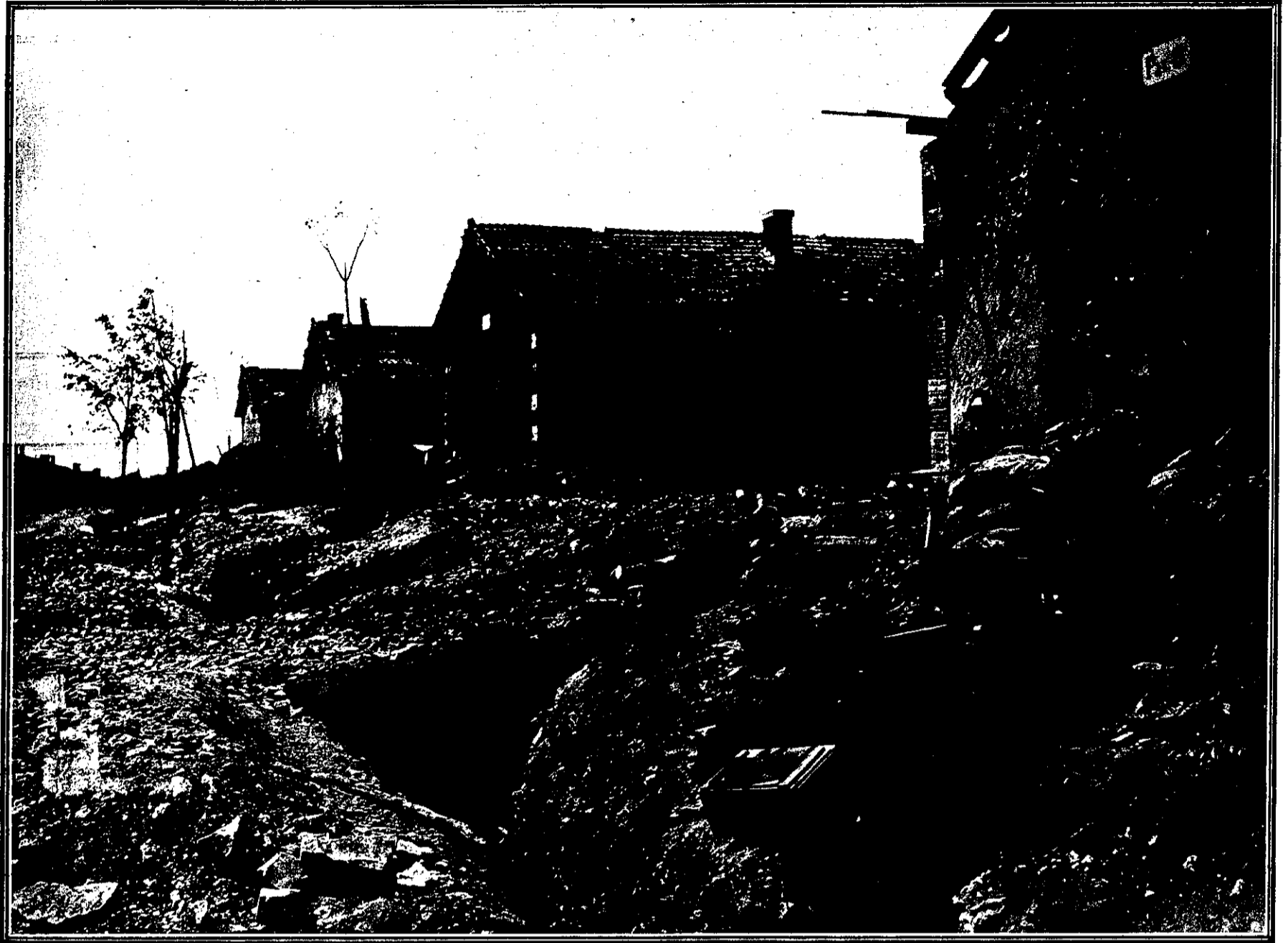


Territory Infested With Burrows, the Result of the Tactics Employed by the Opposing Forces.



THE WAR OF THE MOLE.—REMARKABLE INSTANCES OF UNDERGROUND WARFARE CHARACTERISING THE PRESENT STRUGGLE. These humble peasants' houses on the Meuse are to-day the shelter of the occupants of the new underground village, who enter and emerge by long passages underneath the brick and concrete walls.



A SCENE OF DESOLATION AFTER A TITANIC ARTILLERY DUEL ON THE WESTERN FRONT. POSITIONS CAPTURED BY THE FRENCH AFTER A NOTABLE ADVANCE. Only those who have witnessed a huge artillery battle are able to conceive the ravages wrought by the heavy guns. Trees are broken and torn asunder, the ground is ploughed up, and the shelters are all reduced to the surface level, a desolate picture confronting the soldiers upon their taking possession of the abandoned trenches.
 [French Army Photographic Service. By courtesy French Consulate, Auckland.]