



**A SMART  
BUSINESS  
SUIT - - -**

This is a Suit that is typical of many styles that we shew for men who are particular in their appearance.

It is tailored by one of England's leading men's wear houses and is built of a smart light weight grey check Tweed. Note the soft roll Collar and perfect cut of the cuffed Trousers.

Price, in all sizes ready to put on **79/6**

**Milne & Choyce Ltd.**

Queen Street, : : AUCKLAND.

**BEFORE**



**YOUR  
VACATION  
COMES ROUND**

Be sure and have your clothes nicely cleaned and Pressed, or perhaps Dyed for the occasion.

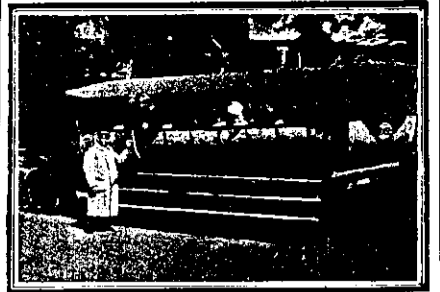
We are experts in superior Dyeing and Chemical Dry Cleaning, and guarantee every satisfaction.

**D. & A. BROWN,**

SHORTLAND STREET.

Established 1866. 'Phone 1864.

WORKS—GRAFTON TERRACE.



**SIGHT-SEEING IN AUCKLAND**

The Chase Tourist Sight-Seeing Co's. (Ltd.) Beautiful Motor Char-a-banc leaves the G.P.O., Lower Queen Street, daily (morning 10 a.m., return noon, fare 3s.; afternoon 2.30 p.m., return 5.30 p.m., fare 5s., including afternoon tea), visiting Public Buildings, Parks, Domains, Suburbs and all places of interest. Tourists, Visitors, Town and Country Folk don't miss these Trips. They are Delightful and Edifying. Look for the CHASE Char-a-banc at the Post Office. Get a Programme. Book your seats with the Government Tourist Office, Boarding House, Hotel Proprietors,

or **JOHN W. ANDREW**, Managing Director, Chase Tourist Sight-Seeing Co., Ltd. 'Phone 1553.



Large Stocks of High-Class :

**Jewellery**

Diamonds, Opals Pearls, and other Precious Stones always on hand at Moderate Prices

All Kinds of JEWELLERY Made to Order

Repairs Promptly attended to.

**L. H. MATHIAS**, Manufacturing Jeweller  
16 Queen Street (next Waverley Hotel), Auckland. Phone 3859

**DUNVILLE'S  
V R  
WHISKY**

*"The Lancet" (the leading Medical Journal), says:-*

February 8, 1908.	March 14, 1914.
"Thoroughly Matured."	"Further analysis shows consistency of composition."
"Entirely free from Acrid flavour."	"Evidenced Maturity"
"Smooth to the palate."	"Flavour characteristic of Genuine Irish Whisky."
"Free from excess of extractive matters."	"Standard quality maintained."
"No acidity."	

Guaranteed genuine only when bearing Branded Cork and Capsule.

Do not be misled by Colourable Imitations of the Label.

**DUNVILLE & CO., Ltd.,** ROYAL IRISH DISTILLERIES, BELFAST.  
THE CAMPBELL AND EHRENFRIED CO., Ltd., AUCKLAND.

**PITMAN'S  
Commercial Shorthand**

TAUGHT BY CORRESPONDENCE

Write to-day for Free Booklet, entitled "TIME IS MONEY." It tells you all about the new Pitman's Commercial Shorthand CORRESPONDENCE COURSE, for which we have been appointed Sole Licensees in Australia and New Zealand, by Sir Isaac Pitman and Sons, Ltd. Ours is the only Institution Authorised to use this New and Up-to-date, Pitman Shorthand Correspondence Course. No other course can be compared to it for Clearness of Exposition.

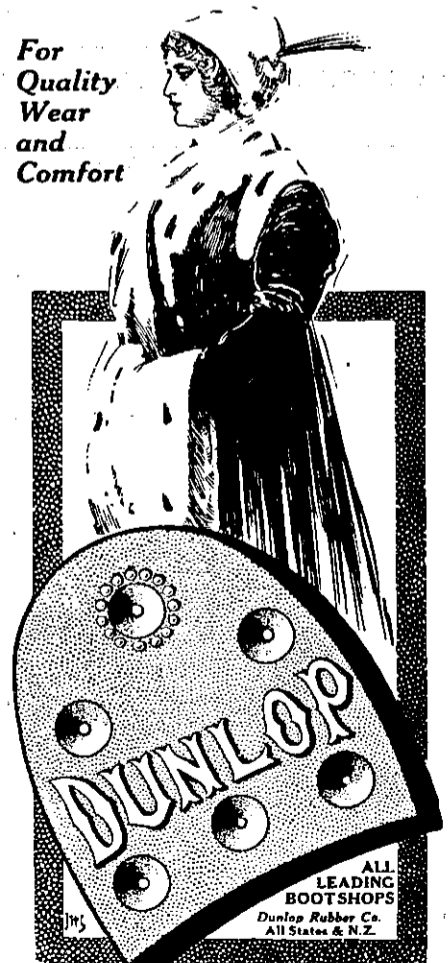
Forty Superb, Simplified and Illustrated Lessons, Complete Specially by the Originators and Inventors of Isaac Pitman's Shorthand, and Obtainable from us only.

You can Now Learn Shorthand Easily, Quickly and Thoroughly —For a Small Fee. Write for Free Booklet, Sending Name and Address.

**Hemingway & Robertson's**  
Australasian Correspondence  
Schools Ltd. P.O. Box 516 Auckland.

**DUNLOP  
RUBBER  
HEELS**

For Quality Wear and Comfort



**KOHN'S** For **QUALITY RINGS**

An unrivalled selection of elegant Engagement Rings await your choice at Kohn's. As Manufacturer ourselves, we are able to offer values and qualities in high-grade jewellery that are unapproached elsewhere in Auckland, and the rings and gems we sell are guaranteed true to name and description, and behind every guarantee there stands our unblemished record of nearly half a century's trading in Auckland

**Auckland's Leading Jewellers, 178 Queen Street.**