

# Finest Holiday in N.Z.

## The Grand Motor Tour

CONNECTING

Queenstown, Lake Wakatipu,

WITH

Mount Cook - - Hermitage.

## The Grand Motor Tour

Is Full of Interest from Start to Finish.

GLORIOUS SCENERY. BEAUTIFUL LAKES.

WRITE US DIRECT or get in touch with  
Thos. Cook & Son and Government Tourist Dept.  
and let them tell you all about it.

Mt. Cook Motor Coy. Ltd. Fairlie & Queenstown

### GLADSTONE GRAND HOTEL FAIRLIE.

Leading and most fashionable hotel; handsome stone structure and only fire-proof hotel in Fairlie. Accommodation for 70 guests. Adjoining Mt. Cook Motor Co. and starting place for cars to Hermitage. All correspondence to be addressed to THE MANAGER.

### NAPIER (THE BRIGHTON OF NEW ZEALAND).

STARTING POINT FOR

## LAKE TAUPO

(Hot Lake District).

NAMED THE ANGLERS' PARADISE  
& HOURS MOTOR FROM NAPIER

Napier to Taupo is undoubtedly one of the most interesting and romantic scenic routes in the Southern Hemisphere, and for Rugged Mountain Landscape is unsurpassed.

A motor car leaves Napier on Thursday at 8 a.m., lunching at Tarawera, arriving Taupo 4 p.m. Taupo depart Friday 8 a.m., Tarawera noon, arrive Napier at 4 p.m. Motor service 1st December to 30th April.

The mail coach leaves Napier on Monday 6.30 a.m., staying at Tarawera overnight, reaching Taupo about 4 p.m. Taupo depart Wednesday 7 a.m., arrive Napier Thursday, about 4 o'clock.

Fares per coach, Napier to Taupo, Single, £2 10s.; Return, £4. Fares per motor car, Napier to Taupo, Single £3 10s.; Return, £6.

Full particulars at Government Tourist and T. Cook and Sons.

H.B. MOTOR COMPANY, LTD.,  
PROPRIETORS, NAPIER.

### TAURANGA-TE PUKE- ROTORUA MOTOR SERVICE.

MESSRS. WILLIAMS, GERAGHTY  
AND COLLETT are now running an  
Up-to-date Daily Motor Service to  
Rotorua via Te Puke and Paengaroa.

As only the best Cadillac, Overland,  
Studebaker and other cars are used,  
this is the quickest and most convenient  
Motor Service from Tauranga to  
Rotorua.

Cars leave 9 a.m. daily, arriving  
Rotorua about 2.30 p.m., connecting  
with train to Hamilton, Frankton  
Junction and Main Trunk line.

Fares: Single, £1 5s.; Return, £2.

W. J. BAIGENT, Agent,  
WHARF STREET, TAURANGA.  
'Phone 73.

### MAIL AND GREYNA STABLES. TAIHAPE.

THE MOST UP-TO-DATE LIVERY  
AND BAIT STABLES ON THE  
MAIN TRUNK LINE.

Commercial Travellers and Tourists  
Specially Catered for.

Break Your Journey and let us Drive  
You Round the District, Magnificent  
Scenery.

30 h.p. Motor Car on Hire with  
Experienced Chauffeur.

Horses, Gigs, Buggies and Cabs on Hire.

Horses Broken to Saddle and Harness.

Carriers to any Part of the District.

'Phone 37.

CHAS. F. KELLY, TAIHAPE.

VISITORS TO ROTORUA.  
COMMUNICATE BY LETTER, WIRE  
'PHONE OR PERSONALLY  
WITH THE

### R.M. COACHING CO., LTD.,

TOURS, TRIPS, TIMETABLES,  
FARES, ETC.,  
TO ALL PARTS OF ROTORUA'S  
THERMAL WONDERLAND AND  
BAY OF PLENTY DISTRICT.

Managing Directors: W. T. CARR.  
T. WALKER.

Telegraphic Address: "Motoco."  
'Phone 19.

Agents:  
THOS. COOK AND SONS, AND THE  
GOVERNMENT TOURIST BUREAU.  
F. NEWMARCH,  
Secretary.

## MOTOR TRIPS

Can be Arranged to Kaikoura,  
Nelson and Blenheim, or any  
Part of the South Island, by  
Wire or Letter.

Trips Undertaken from Christ-  
church or any place desired at  
Shortest Notice.

32 H.P. HUPMOBILES,  
With Careful and Competent  
Drivers.

### J. C. MERCER'S GARAGE, WAIKARI, North Canterbury.

Opposite Star and Garter Hotel.

J. C. MERCER, Winner of Mt.  
Cook Motor Reliability Trial.

## NGARUAWAHIA LIVERY STABLES

(LATE THOMAS AND DOUGLAS).

Under Entirely New Management.

Our Stables are Now the Most Up-to-  
date in the Waikato.

SADDLE HORSES, COACH, GIGS AND  
BUGGIES AVAILABLE AT  
SHORTEST NOTICE.

Experienced Drivers.

CARS AND TAXIS FOR HIRE.  
Trains Met on Receipt of Wire or  
Letters.

Horses Bought, Sold or Exchanged.



### EMPIRE STABLES AND MOTOR GARAGE, (LIVERY AND BAIT.) MURCHISON.

HORSES, VEHICLES AND MOTORS  
FOR HIRE.  
Trips to all Parts of the West Coast.  
Address all Wires and Letters—

F. KEATING,  
MURCHISON.

Careful and Competent Drivers.

### KING'S COURT Private Hotel.

UPPER QUEEN STREET,  
AUCKLAND.

The Most Up-to-date Private  
Hotel in the Dominion.

Situated in Three Acres of  
Grounds,  
Charmingly Laid Out.

TENNIS COURT  
GYMNASIUM  
BILLIARD TABLE.

Magnificent View from Balconies.

Fireproof,

Containing 80 Rooms.

UNDER NEW MANAGEMENT.

ENTIRELY RENOVATED.

Telegrams:

"King's Court," Auckland.

'Phone 2256.

TERMS MODERATE.

G. ARROWSMITH, Proprietor.  
(Late of New Plymouth.)

THOUSANDS OF TEETH ARE EX-  
TRACTED BY OUR DENTISTS  
DURING THE YEAR.

It does not necessarily follow that  
because a tooth has a hole in it that  
it should be extracted. A Gold or Amal-  
gam Filling—a Gold or Porcelain Crown  
—will make a useful member of it  
again. Let me see what I can do for  
you. Consultation Free. Reform Fees.

H. V. C. HARRIS - - Napier.

### HOW TO SEE MARLBOROUGH & NELSON

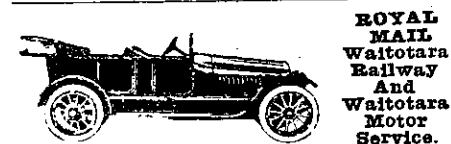
Best Motor Tours in New Zealand.  
Trips to all Parts of South Island.



First car to make trip to Havelock via  
Grove Road.

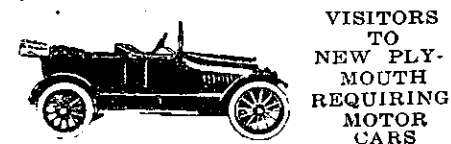
No trip too short or too long. The  
Sportsman's Motorist. Reasonable  
Charges. All Trains and Steamers met.  
Overland Touring 35 h.p. Car (Latest  
Model). Telephone No. 1 Picton.

JACK LOVE ..... Proprietor.  
PICTON.



ROYAL  
MAIL  
Waitotara  
Railway  
And  
Waitotara  
Motor  
Service.

And Livery and Bait Stables. Gigs on  
hire at all hours. All trains met at  
Waitotara, and tours arranged to all  
parts of the district. Experienced  
drivers. Charges moderate. Telegrams:  
MRS. W. A. HURLEY, Waitotara.



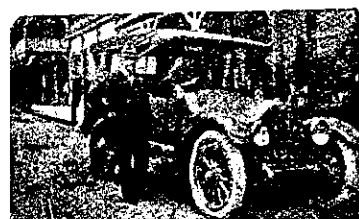
VISITORS  
TO  
NEW PLY-  
MOUTH  
REQUIRING  
MOTOR  
CARS

COMMUNICATE WITH

H. HEFFORD,

MORLEY STREET.

Tours Arranged to all Parts of Dis-  
trict and Mt. Egmont. Charges Reason-  
able. Experienced Drivers.



RESEIGH'S MOTORS, REEFTON.  
Meets all trains. Special trips ar-  
ranged to all parts of district. Address  
Exchange Hotel or Cohens, Stationer.  
'Phone 18.

## Waitomo Caves Hostel.

### Waitomo, Ruakuri, and Aranui Caves,

Reached by Daily Train  
from  
Wellington or Auckland.

THE Government Hostel  
at Waitomo is situated  
in a position from which the  
caves can be conveniently  
visited, and is connected by  
Telephone with the local  
Post and Telegraph Office.

### TARIFF

Adults - 8s per Day.  
Single Meals - 2s each.  
Children between the ages of three  
and 12 half-price.

Obtain your tickets from the Govt.  
TOURIST BOOKING BUREAUX  
Wellington, G.P.O. Bldg.  
(opposite Queen's Wharf)

Auckland: Custom Street.

NO EXTRA Charge for Booking.

FOUND—Spring Blossom Ointment  
Cures poisoned wounds, sore legs,  
sore eyes, burns, and all skin com-  
plaints; 6d. and 1s. Bloomine, the great  
Corn, Wart and Bunion Cure, 6d., at  
chemists, stores, and wholesale drug-  
gists. Hawkins' Instant Relief Asthma  
Powder, 1s. and 2s.; post free. Address:

C. W. HAWKINS, Herbalist.  
GEORGE STREET, DUNEDIN.

BROWN'S Highbury Laundry,  
CHRISTCHURCH—Shipping, Hotels,  
Restaurants and Public Institutions  
specially catered for by contract. Shirts  
and Collars a specialty. Repairs of all  
kinds. Town Receiving Offices: Lich-  
field St., Colombo St., Armagh St.  
Agencies in all Suburbs. 'Phones 802,  
1371, Lichfield St. 'Phone 2831; Colombo  
St. 'Phone 2706. Parcels by Post Re-  
ceive Prompt Attention and Despatch.  
Price list on application.

W. BROWN ..... Proprietor.



LAUNCH "WAINUI."  
N. GESTRO ..... Proprietor.  
PICTON.

Fishing Excursions and Picnic Par-  
ties Specially Catered for. Trips to all  
Parts of the Sounds. My Motto: Civil-  
ity and Attention. Charges Moderate.

### MURCHISON FARRIERY AND BLACKSMITHING WORKS. MURCHISON.

Repairs to all Makes of Vehicles at  
Reasonable Charges.  
All Work Carried out with Promptitude.

R. O'ROURKE,  
Proprietor and Manager.

## MACKAY'S SEEDS GROW.

SOW NOW FLOWER AND VEGE-  
TABLE SEEDS.

Plant Now Flowering Shrubs, Fruit  
Trees, Hedging Plants, Daphnes,  
Azaleas, Etc.

Send for Catalogue, Free on  
Application.

Everything for the Gardens at

G. J. MACKAY'S  
SEEDSMAN AND FLORIST,  
106, QUEEN STREET, AUCKLAND.  
(Nursery, Royal Oak, Onehunga.)