

THE TOURIST AND TRAVELLER. WHERE TO STAY AND WHERE TO GO.

AUCKLAND.



The..... W A V E R L E Y HOTEL and RESTAURANT, QUEEN STREET, AUCKLAND. European Plan. Arthur A. Paape ..... Proprietor.

BLLENHEIM.

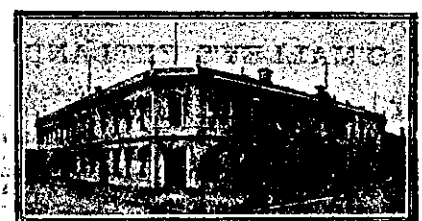
ROYAL HOTEL, BLENHEIM. (Late Royal Hotel, Nelson.) THE SPORTSMAN'S HOME. TARIFF 4/6 PER DAY, 25/- WEEK. R. CANN ..... Proprietor.

CHRISTCHURCH.

IMPERIAL HOTEL, BARBADOES AND ST. ASAPH'S STS., CHRISTCHURCH. MR. J. JACKSON, late of the British Hotel, Lyttelton, and of Akaroa, has taken over the above Hotel, and will be pleased to see old friends and new patrons. The Hotel is pleasantly situated, and offers every comfort of a home.

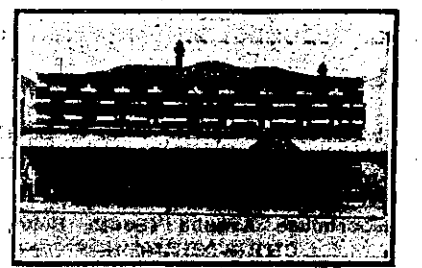
THE ROYAL HOTEL, VICTORIA STREET, AUCKLAND. Every Convenience and Comfort found in a Modern Hotel. Most Popular Hotel with Colonial and Inter-Colonial Travellers. TERMS FROM 10s. 6d. PER DIEM. D. COLLINS, Proprietor. Late of Clarendon Hotel Christchurch.

EMPIRE HOTEL, BLENHEIM. In intimating that I have taken over the above Hotel, I have every confidence that past patrons will renew their support to the new regime. The public generally and Commercial will have every attention to their home comforts, and all sorts of liquors will be found to be of the very Best. Nothing is stocked that will be kept, as the very Best only will be sold, and good quality will not keep; it will have a quick sale. TOM KEATING ..... Proprietor.



WHERE TO STAY IN CHRISTCHURCH. STOREY'S HOTEL, Right Opposite Railway Station. Convenient to all Parts of City and Suburbs. Electric Cars Start from Door. G. S. JAMES ..... Proprietor.

BLUFF. EAGLE HOTEL, BLUFF. New and Up-to-date. Electric Light, Hot and Cold Water in Bedrooms and Every Modern Convenience. Tariff 8s. per day. W. HINCHEY ..... Proprietor.



CLUB HOTEL, BLUFF. EXCELLENT ACCOMMODATION FOR THE TRAVELLING PUBLIC. ONLY THE CHOICEST BRANDS OF LIQUORS. W. WALKER ..... Proprietor.

BULLS. CRITERION HOTEL, BULLS. EXCELLENT ACCOMMODATION FOR THE TRAVELLING PUBLIC. Choicest Brands of Liquors in Stock. W. H. HOSKING ..... Proprietor.

BELVUE PRIVATE HOTEL, GLOUCESTER ST., CHRISTCHURCH. (Opposite "Times" Office.) Excellent Accommodation and Cuisine for the Travelling Public. Members of the Theatrical Profession Specially Catered for. Terms Moderate. MRS. HUCKS ..... Proprietress.

RANGITIKEI HOTEL, BULLS. H. McMANAWAY notifies the Travelling Public that he has taken over the management of the above Hotel, which has been thoroughly renovated and re-furnished, and is now up-to-date in every department. Best Wines, Spirits and Ales in Stock. First-class Table and Accommodation. Phone No. 4. H. McMANAWAY ..... Proprietor.



CAMBRIDGE.

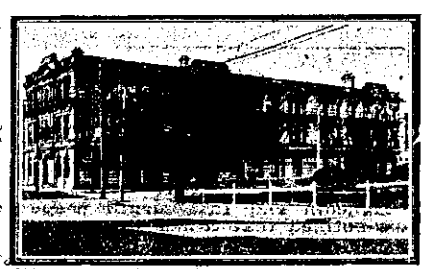
NATIONAL HOTEL, CAMBRIDGE. Opposite the Town Hall and Jubilee Gardens. These fine, new, brick buildings are handy to the Railway Station and the Famous Cambridge Domain. Undoubtedly the Best Appointed Hotel in the Waikato. Climate Unrivalled. Excellent Cuisine. Moderate Tariff. The Best Wines, Spirits and Beer only are served. Letters and Telegrams Promptly Attended to. Phone 131. Sample Rooms. A. SHOSTROM ..... Proprietor.

WHITE HART HOTEL, CENTRE CHRISTCHURCH. TARIFF 10s. PER DIEM. F. M. DREWITT ..... Proprietor.

CARTERTON.

CLUB HOTEL, CARTERTON. W. REDMOND ..... Proprietor. A HOME AWAY FROM HOME. A WELCOME TO ALL. Only Best of Wines, Spirits and Ales Stocked.

SHADES HOTEL, HEREFORD ST., CHRISTCHURCH. The Favourite House of Visitors. Close to Post Office, Theatres, etc. Excellent Accommodation and Cuisine. Wines, Ales and Spirits of the Highest Orders. Crown Ales always on tap. Telegrams and Letters Promptly Attended to. Telephone 1205. J. I. DE MELMANCHE .. Proprietor.



N.Z. MOTOR AND CYCLE JOURNAL. Monthly. Of all Newsagents and Booksellers. PRICE, 6d.

THE CLARENDON, CHRISTCHURCH. Recognised by Tourists and Travellers as one of the Finest Hostels in the Dominion. Situated on the River Bank, within one minute of Post Office, Banks, Theatres, etc. Tourists can rely upon receiving every Comfort and Attention. No pains are spared by the Proprietor of informing Visitors of places of interest and sights to be seen in the city. J. T. SOUPER ..... Proprietor.

PAPANUI HOTEL, PAPANUI, CHRISTCHURCH. Within easy reach of City by Tram or Train. Excellent Accommodation for Visitors. A Favourite Calling Place for Motorists on the Main North Road. The Choicest Brands of Liquors only in Stock. Phone 2096. A. JOHNSTON ..... Proprietor.

OCCIDENTAL HOTEL, VULCAN LANE, AUCKLAND. MRS. N. LYNCH ..... Proprietress. (Late of Clarendon and City Hotels, Auckland.)

CALEDONIA HOTEL, CORNER OF KARANGAHAPE ROAD AND SYMONDS STREET. CAMPBELL - EHRENFRIED'S SPARKLING ALE ON DRAUGHT. Ales, Wines and Spirits of the BEST BRANDS ONLY, and all True to Label. JOHN STACKPOLE .... Proprietor.

AKAROA.

D. HANDSIDE'S PRIVATE BOARDING ESTABLISHMENT, JOLLIE STREET, AKAROA (Opposite Pilkington's Motor Garage). Close to Main Wharf. Tariff Moderate. All Conveniences.

MADEIRA HOTEL, LAVAUD STREET, AKAROA. H. W. PIPER (late Christchurch) wishes to inform the public of Akaroa and Surrounding Bays of the Peninsula and Christchurch that he has taken over the lease of the above Hotel, and that he is ready to Accommodate Tourists and Visitors in his Commodious House. Madeira Hotel affords First-class Accommodation. Tariff 6s per day.

ASHHURST. MASONIC HOTEL, ASHHURST. A. E. SNOSWELL ..... Proprietor. SPEIGHT'S ALE ON TAP. Everybody Welcome. Telephone No. 10.

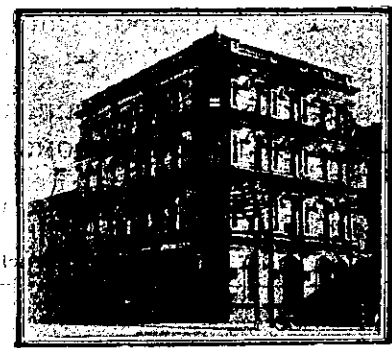
BELGROVE.

BELGROVE HOTEL, BELGROVE. (Opposite Railway Station.) JOSEPH STOCKTON ... Proprietor. The above old-established and popular Hostelry for the travelling public has been taken over by Mr. J. Stockton, late of Downie's Hotel, Murchison. Favourite stopping place for motorists on Nelson-West Coast Road. Nothing but the best of liquors kept. All old and new friends made welcome.

THE MOST UP-TO-DATE WAR PICTURES APPEAR In the N.Z. SPORTING & DRAMATIC REVIEW. Weekly. Of all Newsagents and Booksellers. PRICE, 6d.

STAR HOTEL. (Under New Management.) ALBERT STREET, AUCKLAND. S. J. ATKINS ..... Proprietor.

FIRST-CLASS ACCOMMODATION FOR TOURISTS. Easy Walk from Wharves and Railway Station, and two minutes from Main Thoroughfare—Queen Street. TARIFF: 10s. to 12s. 6d. per day, according to location of room. Rates per period and for Private Rooms quoted on Application. Special Rates for Commercial Travellers.



ALBION HOTEL, CORNER HOBSON ST. AND WELLESLEY ST. WEST, AUCKLAND. This Hotel is under entirely new management, and, having been re-furnished and renovated throughout offers Special Facilities for Visitors to Auckland. The Best of Liquors only Stocked. Special Cuisine; personal supervision. Letters and Telegrams Promptly Attended to. Phone 2852. C. T. LUXFORD ..... Proprietor.

CENTRAL HOTEL, VICTORIA STREET, AUCKLAND. (Under New Proprietorship.)

FIRST-CLASS ACCOMMODATION FOR TOURISTS AND VISITORS. All the Best Brands of Ales, Spirits and Wines in Stock.

COMMERCIAL TRAVELLERS' HOTEL. All Letters and Telegrams Receive Prompt Attention. Boats and Trains Met. W. HENDERSON ..... Proprietor. (Late Esplanade and Okorogire Hotels.)