

FINEST HOLIDAY IN N.Z.

VISIT THE HERMITAGE MOUNT COOK!!

GREAT REDUCTION IN FARES for the MONTH OF NOVEMBER

FAIRLIE to HERMITAGE AND THE GRAND MOTOR TOUR WITH THE Mt. Cook Motor Coy. Ltd.

All Particulars from: Mt. Cook Motor Coy. Ltd., Fairlie or Queenstown. or N.Z. Government Tourist Dept.: or Thos. Cook & Son

VISITORS TO ROTORUA. COMMUNICATE BY LETTER, WIRE 'PHONE OR PERSONALLY WITH THE

R.M. COACHING CO., LTD.
TOURS, TRIPS, TIMETABLES, FARES, ETC., TO ALL PARTS OF ROTORUA'S THERMAL WONDERLAND AND BAY OF PLENTY DISTRICT.

Managing Directors: W. T. CARR. T. WALKER.

Telegraphic Address: "Motoco." 'Phone 19.

Agents: THOS. COOK AND SONS, AND THE GOVERNMENT TOURIST BUREAU. F. NEWMARCH, Secretary.

MOTOR TRIPS

Can be Arranged to Kalkoura, Nelson and Blenheim, or any Part of the South Island, by Wire or Letter. Trips Undertaken from Christchurch or any place desired at Shortest Notice.

32 H.P. HUPMOBILES, With Careful and Competent Drivers.

J. C. MERCER'S GARAGE, WAIKARI, North Canterbury. Opposite Star and Garter Hotel.

J. C. MERCER, Winner of Mt. Cook Motor Reliability Trial.

NGARUAWAHIA LIVERY STABLES

(LATE THOMAS AND DOUGLAS).

Under Entirely New Management. Our Stables are Now the Most Up-to-date in the Waikato.

SADDLE HORSES, COACH, GIGS AND BUGGIES AVAILABLE AT SHORTEST NOTICE.

Experienced Drivers.

CARS AND TAXIS FOR HIRE.

Trains Met on Receipt of Wire or Letters.

Horses Bought, Sold or Exchanged.



EMPIRE STABLES AND MOTOR GARAGE, (LIVERY AND BAIT.) MURCHISON.

HORSES, VEHICLES AND MOTORS FOR HIRE. Trips to all Parts of the West Coast. Address all Wires and Letters—

F. KEATING, MURCHISON.

Careful and Competent Drivers.

LAKE TAUPO

(Hot Lake District).

NAMED THE ANGLERS' PARADISE.

8 HOURS MOTOR FROM NAPIER.

Napier to Taupo is undoubtedly one of the most interesting and romantic scenic routes in the Southern Hemisphere, and for Rugged Mountain Landscape is unsurpassed.

A motor car leaves Napier on Thursday at 8 a.m., lunching at Tarawera, arriving Taupo 4 p.m. Taupo depart Friday 8 a.m., Tarawera noon, arrive Napier at 4 p.m. Motor service 1st December to 30th April.

The mail coach leaves Napier on Monday 6.30 a.m., staying at Tarawera overnight, reaching Taupo about 4 p.m. Taupo depart Wednesday 7 a.m., arrive Napier Thursday, about 4 o'clock.

Fares per coach, Napier to Taupo, Single, £2; Return, £3 10s. Fares per motor car, Napier to Taupo, Single £3 10s.; Return, £6.

Full particulars at Government Tourist and T. Cook and Sons.

H.B. MOTOR COMPANY, LTD., PROPRIETORS, NAPIER.

TAURANGA-TE PUKE-ROTORUA MOTOR SERVICE.

MESSRS. WILLIAMS, GERAGHTY AND COLLETT are now running an Up-to-date Daily Motor Service to Rotorua via Te Puke and Paengaroa.

As only the best Cadillac, Overland, Studebaker and other cars are used, this is the quickest and most convenient Motor Service from Tauranga to Rotorua.

Cars leave 9 a.m. daily, arriving Rotorua about 2.30 p.m., connecting with train to Hamilton, Frankton Junction and Main Trunk line.

Fares: Single, £1 5s.; Return, £2.

W. J. BAIGENT, Agent, WHARF STREET, TAURANGA. 'Phone 78.

MURCHISON FARRIERY AND BLACKSMITHING WORKS.

Repairs to all Makes of Vehicles at Reasonable Charges. All Work Carried out with Promptitude.

R. O'ROURKE, Proprietor and Manager.

MAIL AND GREYNA STABLES.

TAIHAPE.

THE MOST UP-TO-DATE LIVERY AND BAIT STABLES ON THE MAIN TRUNK LINE.

Commercial Travellers and Tourists Specially Catered for.

Break Your Journey and let us Drive You Round the District, Magnificent Scenery.

30 h.p. Motor Car on Hire with Experienced Chauffeur.

Horses, Gigs, Buggies and Cabs on Hire.

Horses Broken to Saddle and Harness.

Carriers to any Part of the District.

'Phone 37.

CHAS. F. KELLY, TAIHAPE.

KING'S COURT Private Hotel.

UPPER QUEEN STREET, AUCKLAND.

The Most Up-to-date Private Hotel in the Dominion.

Situated in Three Acres of Grounds, Charming Laid Out.

TENNIS COURT GYMNASIUM BILLIARD TABLE.

Magnificent View from Balconies.

Fireproof,

Containing 80 Rooms.

UNDER NEW MANAGEMENT.

ENTIRELY RENOVATED.

Telegrams:

"King's Court," Auckland.

'Phone 2256.

TERMS MODERATE.

G. ARROWSMITH, Proprietor. (Late of New Plymouth.)

THOUSANDS OF TEETH ARE EXTRACTED BY OUR DENTISTS DURING THE YEAR.

It does not necessarily follow that because a tooth has a hole in it that it should be extracted. A Gold or Amalgam Filling—a Gold or Porcelain Crown—will make a useful member of it again. Let me see what I can do for you. Consultation Free. Reform Fees.

E. V. C. HARRIS - - Napier.

HOW TO SEE MARLBOROUGH & NELSON

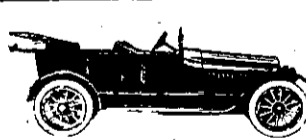
Best Motor Tours in New Zealand. Trips to all Parts of South Island.



First car to make trip to Havelock via Grove Road.

No trip too short or too long. The Sportsman's Motorist. Reasonable Charges. All Trains and Steamers met. Overland Touring 35 h.p. Car (Latest Model). Telephone No. 1 Picton.

JACK LOVE Proprietor. PICTON.



ROYAL MAIL Waitotara Railway And Waitotara Motor Service.

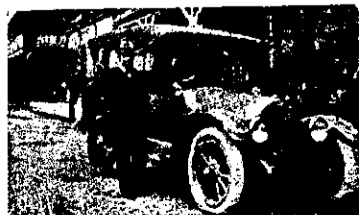
And Livery and Bait Stables. Gigs on hire at all hours. All trains met at Waitotara, and tours arranged to all parts of the district. Experienced drivers. Charges moderate. Telegrams: MRS. W. A. HURLEY, Waitotara.



VISITORS TO NEW PLYMOUTH REQUIRING MOTOR CARS

COMMUNICATE WITH H. HEFFORD, MORLEY STREET.

Tours Arranged to all Parts of District and Mt. Egmont. Charges Reasonable. Experienced Drivers.



RESEIGH'S MOTORS, REEFTON. Meets all trains. Special trips arranged to all parts of district. Address Exchange Hotel or Cohens, Stationer. 'Phone 18.

Waitomo Caves Hostel.

Waitomo, Ruakuri, and Aranui Caves,

Reached by Daily Train from Wellington or Auckland.

THE Government Hostel at Waitomo is situated in a position from which the caves can be conveniently visited, and is connected by Telephone with the local Post and Telegraph Office.

TARIFF

Adults - 8s per Day. Single Meals - 2s each. Children between the ages of three and 12 half-price.

Obtain your tickets from the Govt. TOURIST BOOKING BUREAUX: Wellington, G.P.O. Bldg. (opposite Queen's Wharf) Auckland: Custom Street.

NO EXTRA Charge for Booking.

J. C. STRONG.

CARRIAGE AND MOTOR TRIMMER.

NEWMARKET (Opposite Reserve).

MOTOR CAR HOODS, CUSHIONS AND SLIP COVERS A SPECIALTY.

We Undertake to Thoroughly Renovate Cars and Vehicles of Every Description. Estimates Free.

ALL WORK GUARANTEED.

Country Residents are Invited to Write or Call.

Prices Low. Workmanship High.

FOUND—Spring Blossom Ointment Cures poisoned wounds, sore legs, sore eyes, burns, and all skin complaints; 6d. and 1s. Bloomine, the great Corn, Wart and Bunion Cure, 6d., at chemists, stores, and wholesale druggists. Hawkins' Instant Relief Asthma Powder, 1s. and 2s.; post free. Address:

C. W. HAWKINS, Herbalist. GEORGE STREET, DUNEDIN.

BROWN'S HIGHBURY LAUNDRY, CHRISTCHURCH—Shipping, Hotels, Restaurants and Public Institutions specially catered for by contract. Shirts and Collars a specialty. Repairs of all kinds. Town Receiving Offices: Lichfield St., Colombo St., Armagh St. Agencies in all Suburbs. 'Phones 802, 1371. Lichfield St. 'Phone 2881; Colombo St. 'Phone 2706. Parcels by Post Receive Prompt Attention and Despatch. Price list on application.

W. BROWN Proprietor.

H. I. JONES & SON, LTD., IMPORTERS OF GOLFING REQUISITES.

WANGANUI.

Just Received a Supply of "Omnes" Golf Ball Markers for Club Use. Send for Our Catalogue of Winter Sports—Free.



LAUNCH "WAINUI." N. GESTRO Proprietor. PICTON.

Fishing Excursions and Picnic Parties Specially Catered for. Trips to all Parts of the Sounds. My Motto: Civility and Attention. Charges Moderate.