

# THE TOURIST AND TRAVELLER. WHERE TO STAY AND WHERE TO GO.

## TIMARU.

### CROWN HOTEL.

Excellent Accommodation and Attention. Central Location. Handy to Caroline Bay, Theatres, Wharf and Railway. Nothing but the Best in the Bar.

R. BERTI ..... Proprietor.

### THE DOMINION HOTEL.

The Most Modern and Up-to-date Hotel in Timaru, overlooking Caroline Bay and the Harbour. Everything new inside and out. Absolutely Fireproof. Electric Light, and Replete with Every Convenience. Bath-rooms, hot and cold water on every floor. Moderate Tariff.

JOHN REILLY ..... Proprietor.

### W. QUIRKE

(Late of the Crown and Royal Hotels), Has taken over the Well-known and Favourite.

### EXCELSIOR HOTEL.

Friends will find the Wines, Ales and Cuisines up to the standard that has been identified with his previous hostilities.

## TIRAU.

### OXFORD ROYAL HOTEL.

Situated Between Cambridge and Rotorua.

W. F. BELL ..... Proprietor.

First-class Accommodation for Visitors, Motorists and the Travelling Public.

## TURAKINA.

### GLEN NEVIS HOTEL.

Favourite stopping place for Motorists. Accommodation for motor cars. First-class Accommodation. All Wines and Spirits true to label. Speight's beer only on tap.

C. A. BARNES ..... Proprietor.

## UPPER HUTT.

### PROVINCIAL HOTEL.

The Provincial Offers all the Comforts of a First-class Home.

The Only Hotel in the Township. First-class Stabling Accommodation. WINES, BEERS, AND SPIRITS OF THE VERY BEST. Letters and Telegrams Promptly Attended to.

MRS. M. E. YOUNG ..... Proprietress.

## WAIMATE.

### EMPIRE HOTEL.

Visitors to the above Prosperous South Canterbury Town will find Excellent Accommodation. Good Attention and Cuisine, and all Spirits, true to Label. Tariff 6s. per day.

A. W. STOTT ..... Proprietor.

## WAIPAWA.

### IMPERIAL HOTEL.

LEN ISHERWOOD ..... Proprietor.

This Well-known and Popular Hostelry has been taken over by MR. L. ISHERWOOD, Formerly of Wellington and Lately of Marine Hotel, Whakatiki.

A HEARTY WELCOME TO ALL.

### COMMERCIAL HOTEL.

Private Suites of Apartments and Every Convenience for the Accommodation of the Public. Wines, Spirits and Beer of the Best Quality only. A First-class Billiard Table. Stabling and paddock accommodation.

W. PELLOW ..... Proprietor.

## WAIPUKURAU.

### TAVISTOCK HOTEL.

The Above Hotel has just been rebuilt and refurbished throughout, and is now replete with every Convenience. Waipukurau is the noted health resort of the Province. Good Fishing and Shooting. Excellent Accommodation for the Travelling Public.

DONALD McLEOD ..... Proprietor. (Late Whangarei and Feilding.)

## WAITARA.

### MASONIC HOTEL.

The recognised most popular House of Call in the town. Home away from home. All wines, spirits and ales true to label. Never a headache in a cask full. A hearty welcome to all.

W. M. ST. GEORGE ..... Proprietor. (Late of Oakura.)

## WANGANUI.

### ARAMOHO HOTEL.

E. D. HAMMOND ..... Proprietor.

Reached by Tramcar from Wanganui, on Bank of New Zealand's Most Beautiful River.

ACCOMMODATION OF THE VERY BEST.

This Well-known House of Call has been taken over by MR. E. D. HAMMOND, well-known in Sporting Circles, who extends a Welcome to all Old and New Friends. Cuisine Arrangements Under Personal Supervision of Mrs. Hammond.

### METROPOLITAN HOTEL.

Opp. Railway Station WANGANUI. J. HANNAN ..... Proprietor. (Late of Hannan's Hotel, Marton.) Under New Management. House conducted on first-class lines. Everything of the very best. Night porter kept; visitors called for early trains. A hearty welcome to all. Tariff 7s. per day. Phone 84. P.O. Box 138.

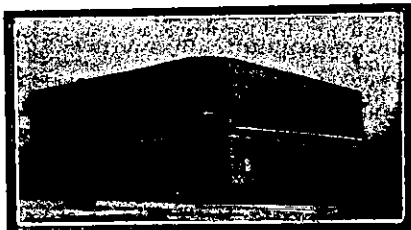
### CHAVANNES' HOTEL.

A Comfortable Home for Visitors to Wanganui. Every Home Comfort.

Excellent Cuisine. Commodious Sample Rooms. Phone 24. P.O. Box 51.

J. G. SWAN ..... Proprietor.

## WAVERLEY.



### COMMERCIAL HOTEL.

E. A. HART ..... Proprietor. The Appointed Hotel for Commercial Travellers. First-class Accommodation for the Travelling Public. Hot and Cold Shower Baths. Tariff, 6s. per day.

## WELLINGTON.



### HOTEL CECIL.

Opposite Government Railway Station and Junction of City Tramways, and Adjoining Parliamentary Buildings.

EXCELLENT CUISINE AND EVERY MODERN CONVENIENCE.

P.O. Box 372. Phone No. 354. Telegraphic Code, "Cecil."

TARIFF ON APPLICATION.

COOK'S COUPONS ACCEPTED.

JAMES McPARLAND, Proprietor.

### TERMINUS HOTEL.

Corner Taranaki Street and Courtenay Place, WELLINGTON. C. F. PRIEST ..... Proprietor. Most admirably situated; tram stop opposite front door. Every accommodation for visitors. Mr. Priest, formerly of Club Hotel, Martinborough, extends a hearty welcome to his many Wairarapa friends.

### POST OFFICE HOTEL.

Offers First-class Accommodation at a Moderate Tariff. Excellent Cuisine. Telegrams, Post Office Hotel, Wellington. Phone 2827.

MATTHEW MUIR ..... Proprietor.

### NEW OCCIDENTAL HOTEL.

LAMBTON QUAY, WELLINGTON. MR. C. E. ALDRIDGE, for some years in charge of the Hotel Cecil, has entered into possession of this well-known and Popular Hostelry. A Hearty Welcome to Old and New Friends. Wines and Cuisine of the Very Best. Telegrams receive prompt attention.

## WELLINGTON.

### BARRETT'S HOTEL.

LAMBTON QUAY, WELLINGTON. (Opposite Bank of N.Z.) Accommodation for 100 Guests. Electric light throughout; electric lift. Night Porter in Attendance. Letters and Telegrams Receive Prompt Attention. Tariff 8s. per day, 45s. per week. Phone 1076.

D. DALTON ..... Proprietor.

### PIER HOTEL.

Opposite Queen's Wharf, WELLINGTON, and in the midst of the Principal Business Warehouses. First-class Accommodation. Everything of the Very Best. Phone 949. P.O. Box 755.

DAVE SULLIVAN ..... Proprietor. (Well known in Sporting Circles.)

### WHERE TO STAY IN PETONE, CENTRAL HOTEL.

The Commercial House of the Town. MR. E. H. GILMORE, formerly of the Terminus Hotel, Otago, has taken over this well-known and Popular House of Call. A Hearty Welcome to all. Everything of the very Best.

### TRAMWAY HOTEL.

ADELAIDE ROAD, WELLINGTON. MR. FRANK McPARLAND Begs to inform his Friends and the Public that he has taken over this well-known Hotel. Visitors can rely on getting only the Best.

### ALBERT HOTEL.

The Home of the Dramatic Profession, Commercial, and The Travelling Public. THE POPULAR HOSTELRY. Tariff 9/6 per day; £2 10s. per week.

JAMES McDONALD ..... Proprietor.

### EMPIRE HOTEL.

WELLINGTON, N.Z. THE MOST CENTRALLY-SITUATED HOTEL IN WELLINGTON. The Proprietor having Purchased the Freehold of this High-class Property is sparing no Expense in Refurnishing and Redecorating. Patrons can now rely on GOOD ATTENTION AND ACCOMMODATION.

TARIFF: 12/6 PER DAY.

'Phone 196. P.O. Box 385.

RICHARD DWYER ..... Proprietor.

### GRAND HOTEL.

Offers Excellent Accommodation to Travellers and Tourists.

Porter Meets all Trains and Boats.

Tariff:

12s. 6d. per day; Commercial, 10s. 6d. per day; weekly by arrangement.

E. M. PAGE ..... Proprietor.

### WHERE TO STAY WHEN IN WELLINGTON. NEW COMMERCIAL HOTEL

Under Entirely New Management. CUISINE UNEXCELLED. MODERATE TARIFF. X A. R. DURRANT, Proprietor X

### "WHERE TO STAY IN NEW ZEALAND."

Contains Valuable Information for Tourists and Travellers.

PRICE. 1s

FULLY ILLUSTRATED.

Printed and Published by ARTHUR CLEAVE, of Eilerslie, at his Registered Printing Office, Vulcan Lane, Auckland, for the Proprietors, Arthur Cleave and Co., Ltd.,

THURSDAY, OCTOBER 5, 1916.

## WELLINGTON.

### ARCADIA PRIVATE HOTEL.

LAMBTON QUAY, WELLINGTON.

Replete with Every Modern Convenience. Electric Light throughout. Containing 79 rooms; well lit and ventilated.

Central position to Railway Trains and Post Office.

Telegrams and Letters receive prompt attention.

Tariff Moderate.

MRS. E. COCKAYNE, Proprietress.

## WHANGAREI.

### JAMES' TEMPERANCE HOTEL.

First-class Accommodation. Excellent Cuisine. Every Home Comfort. Stabling and Paddock. Horses for Hire.

H. J. JAMES ..... Proprietor.



### WHANGAREI HOTEL.

This Fine House, just re-built in brick and furnished in up-to-date style, now offers unrivalled accommodation to the Travelling Public.

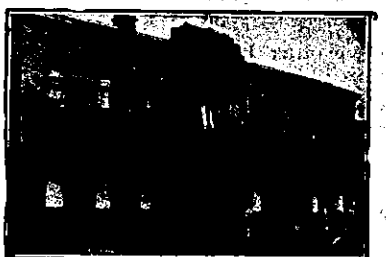
Sample Room. Hot and Cold Baths. Two minutes' walk from Saltwater Bating Place. Stabling Second to None. Best Wines, Ales and Spirits kept in Stock.

SAMUEL McMAHON ..... Proprietor.



### THE COMMERCIAL HOTEL.

The Finest Hotel in North Auckland. Replete with Every Modern Convenience. Electric Light. Fireproof Building. Adjacent to Railway Station and Post Office. Private Suites. Only the Best Wines and Liquors Stocked. Telegrams: "Commercial, Whangarei." H. J. BRAY ..... Proprietor.



### SETTLERS' HOTEL.

The New Settlers' Hotel is now open to receive Commercial and the Travelling Public. Thirty Spacious and well-ventilated Bedrooms, Luxurious Sitting and Commercial Rooms. Fireproof Structure. Only the very Best Brands of Liquors Stocked. Sample Rooms. Telegrams Promptly Attended to. EXCELLENT CUISINE.

PERSONAL SUPERVISION. TARIFF, 6/- PER DAY.

Telephone 61.

VICTOR GOLDWATER, Proprietor.

### N.Z. MOTOR AND CYCLE JOURNAL.

Of all Newsagents and Booksellers. PRICE, 6d.