

THE TOURIST AND TRAVELLER. WHERE TO STAY AND WHERE TO GO.

PICTON.

OXLEY'S HOTEL.

Under New Management. PICTON.

F. S. RUMBOLD Proprietor.



This Well-known, Popular and Up-to-date Hotel has been entirely renovated...

QUEENSTOWN.

GRAND VIEW

PRIVATE BOARDING ESTABLISHMENT, QUEENSTOWN.

Excellent Accommodation for Tourists. Occupying a position on the rise...

MISSES POWELL Proprietresses.

RANGIORA.

THE JUNCTION HOTEL, RANGIORA.

C. ALLINGTON Proprietor.

Letters and telegrams receive prompt attention. First-class Billiard Table.

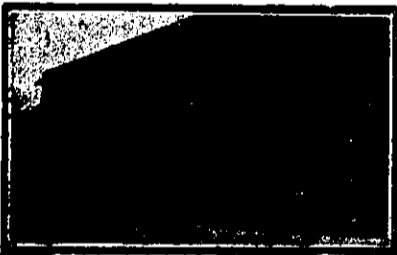
RANGIRIRI.

RANGIRIRI HOTEL, RANGIRIRI.

GEO. L. WASHER Proprietor

FIRST-CLASS ACCOMMODATION FOR THE TRAVELLING PUBLIC. BEST BRANDS OF WINES AND SPIRITS.

REEFTON.



DAWSON'S HOTEL, REEFTON.

The Leading Hotel in Reefton. Wines and Spirits of the very Best Brands.

JAMES S. VIAL Proprietor.

RIVERTON.

WHERE TO STAY IN RIVERTON. RAILWAY HOTEL.

Directly Opposite Railway Station.

Ideal Hotel for a Holiday at the Seaside. Everything of the very Best.

CHAS. DE CLIFFORD Proprietor.

ROSS.

EMPIRE HOTEL, ROSS.

J. McTAGGART Proprietor.

The Tourist Resort of the West Coast for Visitors wishing to see Franz Josef and Fox Glaciers...

N.Z. MOTOR AND CYCLE JOURNAL.

Monthly.

Of all Newsagents and Booksellers.

PRICE, 6d.

ROTORUA.

LAKE HOUSE HOTEL.

OKINEMUTU, ROTORUA.

This Hotel Commands an Imposing Situation on the Shores of Lake Rotorua.

Free for Guests, the Mineral Waters of which have Highly Curative and Valuable Properties.

E. W. G. SMITH Proprietor. (Late of Cambridge and Tirau.)

THE GEYSER HOTEL, ROTORUA.

Golf Links Adjoin the Hotel.

SITUATED AT WHAKAREWAREWA. THE AMPHITHEATRE OF SPOUT BATH.

Free to Guests. Famous for its Extraordinary Cures of Rheumatism, Neuralgia, Lumbago, Sciatica, Kidney, Liver and Other Complaints.

Five Minutes from Rotorua. Bus Free from Station to Hotel for Guests.

TARIFF FROM 9s. PER DAY.

ROX. WOODWARD Proprietor. (Late Grand and Palace Hotels, Rotorua, and Royal Hotel, Auckland.)

ROXBURGH.

Under New Management. GRAND HOTEL, SCOTLAND ST., ROXBURGH.

M. SULLIVAN Proprietress.

Accommodation right up to the times. First-class Table a speciality. Excellent beds. Only Best Brands of Ales and Liquors kept.

SANSON.

JUNCTION HOTEL, SANSON.

MRS. Z. L. BUCKERIDGE, Proprietress.

Wanganui to Wellington's most favourite stopping place for Motorists and Travellers.

SOUTHLAND.

CROWN HOTEL, OTAUTAU, SOUTHLAND.

M. O'BRIEN Proprietor.

Everything of the Very Best. Motor Cars for Hire, Tours Arranged to all Parts of the District.

STEWART ISLAND.

FERNDALE HOUSE, STEWART ISLAND.

The Leading House for Tourists and Travellers, situated on the rise overlooking Half Moon Bay...

MRS. C. HICKS Proprietress.

STOKE.

TURF HOTEL, STOKE.

Four Miles from Nelson.

Best Quality of Wines and Spirits supplied. Tariff 6s. 6d. per day.

L. M. NAYLOR Proprietor.

STRATFORD.

EMPIRE HOTEL, STRATFORD.

This Well-known House of Call has been taken over by MR CECIL ARDEN, well-known in Sporting Circles.

STRATFORD HOTEL, BROADWAY, STRATFORD.

(Opposite Newton King's Offices.) This Hotel is now under New Management...

F. WHITTLE Proprietor.

TAIHAPE.



GRETNA HOTEL, TAIHAPE.

FIRST-CLASS ACCOMMODATION FOR TRAVELLERS.

Every Comfort and Convenience.

First-class Table d'Hote.

Well Equipped Commercial Rooms.

ALL LIQUORS OF THE BEST.

W. McLENNAN Proprietor.

TAKAKA.



TELEGRAPH HOTEL, TAKAKA.

Newly erected building containing all the Latest Conveniences. Splendidly Furnished and Replete Throughout with Everything Up-to-date.

GLOBE HOTEL, WAITAPU, TAKAKA DISTRICT.

Ranks among the First-class Hotels throughout the Province, and is a Favourite Resort for all Tourists.

JAMES PAGE Proprietor.

TARANAKI.

OKATO HOTEL, TARANAKI.

On Main New Plymouth-Opunake Road. Favourite stopping place for Travellers. Everybody made welcome.

TARATAHI.

TARATAHI HOTEL, TARATAHI.

W. M. HALLEY Proprietor.

THE BEST KNOWN HOUSE IN THE WAIRARAPA.

Everybody Calls and Everybody Welcome.

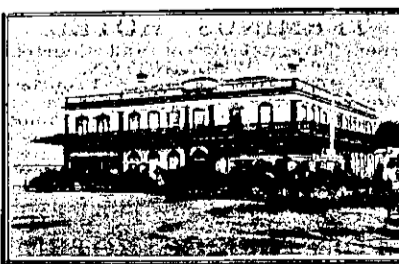
TARIKI.

TARIKI HOTEL, TARIKI.

TARIKI, Only Hostelery in Township.

MR. F. J. MILLS, late of the Police Force, Auckland, desires to inform his many friends that he has taken over the above well-known house of call.

TAURANGA.



STAR HOTEL, TAURANGA.

THE LEADING COMMERCIAL HOUSE IN THE BAY OF PLENTY. Best of Accommodation. Excellent Cuisine.

N.Z. SPORTING & DRAMATIC REVIEW.

Of all Newsagents and Booksellers.

PRICE, 6d.

TAUERU.

TAUERU HOTEL.

Eight miles from MASTERTON.

First Hotel on East Coast Route. Capital Accommodation. Free House for Everything.

J. OLIVER Proprietor. (Late of Napier.)

TE AROHA.

GRAND HOTEL, TE AROHA.

Directly Opposite the Domain and Baths.

MRS. M. LAWLESS,

(Late of the Palace Hotel, Te Aroha). Has Pleasure in informing her Numerous Friends and Patrons that SHE HAS PURCHASED THE FREEHOLD OF THE

GRAND HOTEL, TE AROHA.

And that it will henceforth be Conducted under her Personal Management.

In Thanking her Friends and Patrons for their Generous Support in the past, MRS. LAWLESS trusts that by strict Attention to Business to merit a Continuance of their Patronage.

TERMS MODERATE. CUISINE EXCELLENT.

Porter Meets all Trains.

TE AUTE.

TE AUTE HOTEL, TE AUTE.

On Main Wellington-Napier Road.

MR. E. ODLUM, for 10 years head barman at the Carlton Club Hotel, at Hastings, has taken possession of this Popular Hostelery.

E. ODLUM Proprietor.

TE KUITI.

"RIVERSIDE" PRIVATE HOTEL, TE KUITI.

EXCELLENT ACCOMMODATION FOR VISITORS.

Electric Light. First-class Table. 26 Spacious Rooms.

RECENTLY ENLARGED AND RENOVATED.

Letters and Telegrams Attended To.

TARIFF 5/6 PER DIEM.

MRS. J. STEWART Proprietress.

TEMUKA.

EMPIRE HOTEL, TEMUKA.

Recently renovated and furnished and extensive alterations made. Now Second to None in the District.

TOM LATTA Proprietor.

THAMES.

ROYAL HOTEL, THAMES.

(Under New Management.)

FIRST-CLASS ACCOMMODATION.

UP-TO-DATE SERVICE. Hot and Cold Baths.

Telegrams Promptly Attended to.

J. W. H. BRIGHT Proprietor.

(Late of Hamilton and Waikato Hotels)

SALUTATION HOTEL, MARY STREET, THAMES.

HARRY BROWNLEE, Proprietor.

ONLY SPEIGHT'S ALE ON DRAUGHT.

Best Ale in Town.

POST OFFICE HOTEL, MARY STREET, THAMES.

Visitors will find here Excellent Accommodation and the very Best Wines, Spirits and Ales.

MRS. W. MORRISON Proprietress.

PACIFIC HOTEL, THAMES.

This Hotel offers Special Facilities to Commercial Travellers and Visitors, being Convenient to Steamer and Train.

Splendidly Appointed.

WINES, BEERS AND SPIRITS OF THE VERY BEST.

FIRST-CLASS TABLE.

Letters and Telegrams Promptly Attended to.

R. E. PRICE Proprietor.