

THE TOURIST AND TRAVELLER. WHERE TO STAY AND WHERE TO GO.

HELENSVILLE.

HELENSVILLE HOTEL,
HELENSVILLE SOUTH.

MR. JOE PARKES

(Late of Railway Department)

Is now the Proprietor, and will be pleased to see old friends.

CLOSE TO HOT SPRINGS.

Good Accommodation for Horses, Vehicles and Motor Cars

Phone 24.

JOE PARKES Proprietor

HOKIANGA RIVER.

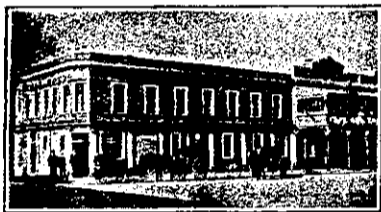
HOREKE HOTEL,
HOKIANGA RIVER.

Under New Management.

First-class Accommodation for Visitors, Tourists and Commercial. Good Stabling and Paddocking. Billiards.

W. QUEENIN Proprietor.

HOKITIKA.



KELLER'S HOTEL,
HOKITIKA.

W. KELLER Proprietor.

First-class Accommodation for the Travelling Public. Only Best Brands of Wines and Spirits kept.

DOMINION HOTEL,
HOKITIKA.

The above New and Commodious Hotel is now under the Proprietorship of **MR. G. H. HARRIS**, late Clerk of Court, Kumara.

The Hotel offers First-class Accommodation to the Travelling Public at a Reasonable Tariff.

The Manager, **MR. W. H. HARRIS**, is a well-known Chef, and Visitors can rely upon the Cuisine being of a High Order. Phone 124. P.O. Box 30.

G. H. HARRIS Proprietor.

HUNTLY.

HUNTLY HOTEL,
HUNTLY.

This Hotel is now one of the Largest in the Waikato. All Trains stop at Huntly, and the Hotel is a few yards from the Station. First-class Accommodation and Excellent Table.

L. B. HARRIS Proprietor.

INGLEWOOD.

INGLEWOOD HOTEL,
INGLEWOOD.

A. LAING Proprietor.
(Late of Woodville.)

FIRST-CLASS ACCOMMODATION FOR THE TRAVELLING PUBLIC.
Wines and Spirits of the Best Brands Only.

INVERCARGILL.

HOTEL CECIL,
INVERCARGILL.

The Hotel for the Travelling Public. Tariff, 7s. per day. Theatrical Companies by Arrangement. Commercial Room, Billiard Room, and Sitting Room. Our Motto: Civility, Attention, Cleanliness. Phone, 777. P.O. Box 226.

JAS. FILLERY Proprietor.

KAIKOHE.

KAIKOHE HOTEL,
KAIKOHE.

First-class Accommodation for Commercial and the Travelling Public. Only the Best of Wines and Spirits. Billiard Room.

G. B. MAIN Proprietor.

KAIKOURA.

PIER HOTEL,
KAIKOURA.

This Hotel is situated right at the Wharf and handy to the town, beaches, etc., and is an Ideal Home for Visitors. Excellent Accommodation and Attention. Moderate Tariff.

W. L. RUTLEDGE Proprietor.

KAWAKAWA.

JUNCTION HOTEL,
KAWAKAWA.

EXCELLENT ACCOMMODATION FOR THE TRAVELLING PUBLIC.
CHOICEST BRANDS OF LIQUORS IN STOCK.

W. A. BELL Proprietor.

KUROW.

RAILWAY HOTEL,
KUROW.

Close to Railway Station.

The Favourite House with Commercial and Tourists. Every Attention. First-class Accommodation. Excellent Cuisine. Wines, Ales and Spirits of the Highest Order.

J. A. GREER Proprietor.

LAWRENCE.

RAILWAY HOTEL,
LAWRENCE.

MISSSES McCOLL ... Proprietresses.

Good Accommodation and Table at a Moderate Tariff. Within 1min. walk of Railway Station. Good Stabling.

COMMERCIAL HOTEL,
LAWRENCE.

Under New Management

Tourists and Travellers can rely on getting every Comfort and Attention. First-class Accommodation. Excellent Cuisine.

J. W. ORAM Proprietor.

LEVIN.



HOTEL ARCADIA,
OXFORD STREET, LEVIN.

First-class Accommodation for Visitors. Special Terms to Boarders. All Meals one shilling. Telephone 28.

H. O. BARNETT Proprietor.

LYTTELTON.

CANTERBURY HOTEL,
LYTTELTON.

Opposite Post Office, next to Railway Station and Wharves.

The first and last, first coming in and last going out. First always for choice brands of liquors. **MR. JAMES REID**, late of Greymouth and well known in Sporting Circles, is the Proprietor. Call when you're there.

LUMSDEN.

ELBOW HOTEL,
LUMSDEN.

SPLENDID ACCOMMODATION FOR TOURISTS AND TRAVELLERS.

The Favourite House for Visitors to Lakes Te Anau and Manapouri.

Good Stabling and Roomy Loose-boxes.

THE LIQUORS OF THE HIGHEST QUALITY.

J. CLISBY Proprietor.
(Late of Cromwell.)

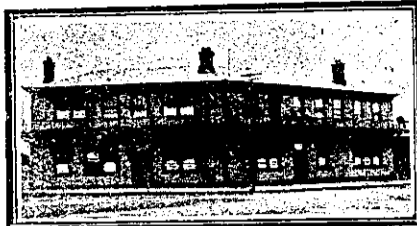
MANAIA.

COMMERCIAL HOTEL,
MANAIA.

J. W. HARCOURT Proprietor.

Favourite stopping place. All Wines, Ales and Spirits true to label. Capital Accommodation. Moderate Tariff. A Hearty Welcome to all old and new friends.

MANAIA.



WAIMATE HOTEL,
MANAIA.

The above Hotel is fitted throughout with electric light, and is replete and up-to-date. Hot and cold plunge and shower baths. Tariff 6s. per day. Phone 8.

R. L. BROWN Proprietor.

MANGONUI.



MANGONUI HOTEL,
MANGONUI.

W. H. LAYCOCK

Is now the Proprietor of the above well-known Hotel. Travellers will find the Accommodation to be the Best in the North. Everything is done for their Comfort that is possible. Only the Best Liquors Procurable in the Market kept. Tariff Moderate. Excellent stabling. Good Billiard Table. Coaches stop at the door. All steamers met on arrival.

W. H. LAYCOCK Proprietor.

MANAKAU.

MANAKAU HOTEL,
MANAKAU, MANAWATU LINE.

J. W. DAVIES Proprietor.

(Late of Albion Hotel, Shannon.)

Manning's Prize Ales on Draught. Everything True to Label.

MARTINBOROUGH.

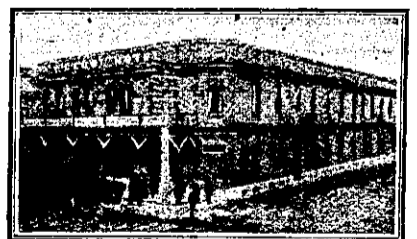


CLUB HOTEL,
MARTINBOROUGH.

This Recognised Best Hostelry in Martinborough has been taken over by **MR. C. J. NELSON**, formerly of the Wakatu Hotel, Nelson, and the Masonic Hotel, Waitara. Excellent Accommodation for Travellers. First-class Cuisine. Everything of the very Best. All Wines and Spirits true to Label.

C. J. NELSON Proprietor.

MASTERTON.



CLUB HOTEL,
MASTERTON.

HERMANN CRASS Proprietor.
(Late of Arcadia Hotel, Wellington, the Wellington Club, and the Union Company's Boats).

First-class table. First-class sample-rooms. Tariff 9s. per day. Phone 57.

MERCER.

MERCER HOTEL,
MERCER.

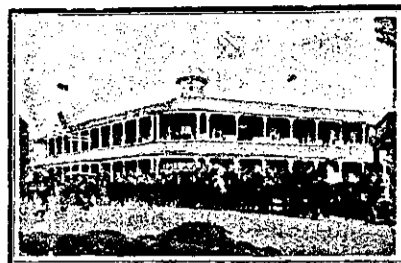
FRANK GIMBLETT Proprietor.

BEST BRANDS OF WINES AND SPIRITS.

EVERY CONVENIENCE FOR THE TRAVELLING PUBLIC.

MORRINSVILLE.

NOTTINGHAM CASTLE HOTEL,
MORRINSVILLE.



C. DICKINSON Licensee.

Wenzl Schollum, Proprietor.

MOTUEKA.

THE NEW POST OFFICE HOTEL,
MOTUEKA.

H. G. HOULDSWORTH, Proprietor.

The most Central Position in the Town. The most Up-to-date Hotel in the Nelson Province. Every Convenience for the Travelling Public. Electric light throughout. Tourists will find it a pleasure to stay here. Fishing and Shooting Parties arranged. Special Conveyance to and from Wharf.

Cuisine par excellence. Cosy Sitting-rooms for Ladies. Large, Comfortable and Convenient Commercial Rooms. Attention Prompt and Reliable. An Ideal Hostel for Travellers. Billiard Room, Sample Rooms. Wines and Spirits of the Best. P.O. Box No. 17. Telephone No. 11.

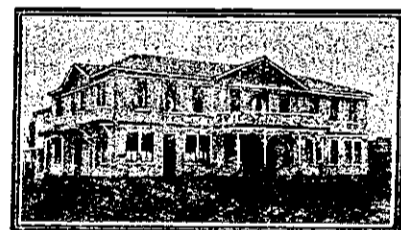
MURCHISON.



DOWNIE'S HOTEL,
MURCHISON.

Newly-erected Building, including electric light, hot and cold baths, and splendidly furnished. All Wines, Ales, and Spirits of the very best. Excellent cuisine. Favourite stopping place for Travellers. Every civility and attention.

A. E. SNOWDEN Proprietor.



COMMERCIAL HOTEL,
MURCHISON.

J. THOMASON Proprietor

(Late of Provincial Hotel, Nelson.)

Superior Accommodation for the Travelling Public. Every modern convenience, including electric light, hot and cold water, etc. Best Brands of Wines and Spirits. Stopping place for Newman Bros' Royal Mail Motor Cars. Letters and Telegrams promptly attended to.

NAPIER.

SUNNY NAPIER, THE IDEAL HEALTH RESORT OF N.Z.

EMPIRE HOTEL,

This Beautiful Brick Hotel has been recently renovated and furnished on the most up-to-date lines to suit the requirements of Tourists, Commercial, and the Travelling Public. Tariff 8s. per day, or £2 2s. per week. Only Speight's Beer on Tap. The Choicest Brands of Liquors kept in Stock. Electric Light Throughout.

JACK WHITE Proprietor.
(Late North Island rep. of J. Speight and Co., Ltd., for 15 years)

TERMINUS HOTEL,
NAPIER.

An Ideal House for Travellers, adjoining Railway Station. First-class Accommodation. Moderate Tariff. Liquors Absolutely True to Label.

G. F. BONNAR Proprietor.

CLARENDON HOTEL,
Opposite Post Office, NAPIER.

BEST OF SPIRITS AND WINES. SPEIGHT'S BEER.

GOOD ACCOMMODATION.

H. T. HANLON Proprietor.