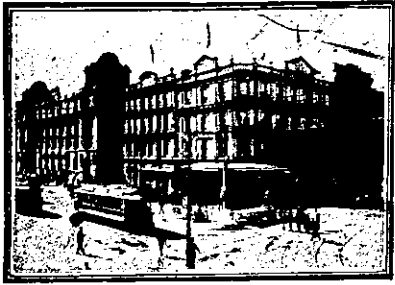


THE TOURIST AND TRAVELLER. WHERE TO STAY AND WHERE TO GO.

AUCKLAND.



The.....
W A V E R L E Y
HOTEL and
RESTAURANT,
 QUEEN STREET, AUCKLAND.
 European Plan.
 Arthur A. Paape Proprietor.

THE ROYAL HOTEL,
VICTORIA STREET, AUCKLAND.



Every
 Convenience
 and Comfort
 found in a
 Modern Hotel.

Most Popular
 Hotel with
 Colonial and
 Inter-Colonial
 Travellers.

TERMS FROM 10s. 6d. PER DIEM.
D. COLLINS, Proprietor.
 Late of Clarendon Hotel Christchurch.

STAR HOTEL.

(Under New Management.)

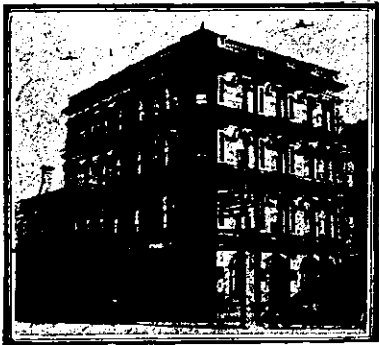
ALBERT STREET, AUCKLAND.

S. J. ATKINS Proprietor.

FIRST-CLASS ACCOMMODATION FOR
 TOURISTS.

Easy Walk from Wharves and Railway
 Station, and two minutes from Main
 Thoroughfare — Queen Street.

TARIFF: 10s. to 12s. 6d. per day,
 according to location of room. Rates
 per period and for Private Rooms
 quoted on Application. Special Rates
 for Commercial Travellers.



ALBION HOTEL,
 CORNER HOBSON ST. AND WEL-
 LESLEY ST. WEST, AUCKLAND.
 This Hotel is under entirely new
 Management, and, having been refur-
 nished and renovated throughout offers
 Special Facilities for Visitors to Auck-
 land. The Best of Liquors only Stocked.
 Special Cuisine; personal supervision.
 Letters and Telegrams Promptly At-
 tended to. Phone 2352.
C. T. LUXFORD Proprietor.

CENTRAL HOTEL,

VICTORIA STREET, AUCKLAND.
 (Under New Proprietorship.)

FIRST-CLASS ACCOMMODATION FOR
 TOURISTS AND VISITORS.

All the Best Brands of Ales, Spirits
 and Wines in Stock.

COMMERCIAL TRAVELLERS'
 HOTEL.

All Letters and Telegrams Receive
 Prompt Attention.

Boats and Trains Met.

G. W. HENDERSON Proprietor.
 (Late Esplanade and Okoroire Hotels.)

OCCIDENTAL HOTEL.

VULCAN LANE,
 AUCKLAND.

MRS. N. LYNCH Proprietress.

(Late of Clarendon and City Hotels,
 Auckland.)

CALEDONIA HOTEL,

CORNER OF KARANGAHAPE ROAD
 AND SYMONDS STREET.

CAMPBELL - EBBENFRIED'S
 SPARKLING ALE ON DRAUGHT.
 Ales, Wines and Spirits of the BEST
 BRANDS ONLY, and all True
 to Label.

JOHN STACKPOLE Proprietor.

AKAROA.

Visitors to Akaroa can Obtain Superior
 PRIVATE BOARD AND RESIDENCE
 at

**D. HANDSIDE'S PRIVATE BOARD-
 ING ESTABLISHMENT,**
 JOLLIE STREET, AKAROA
 (Opposite Pilkington's Motor Garage).
 Close to Main Wharf.
 Tariff Moderate. All Conveniences.

MADEIRA HOTEL.

LAVAUD STREET, AKAROA.

H. W. PIPER (late Christchurch)
 wishes to inform the public of Akaroa
 and Surrounding Bays of the Peninsula
 and Christchurch that he has taken
 over the lease of the above Hotel, and
 that he is ready to Accommodate Tour-
 ists and Visitors in his Commodious
 House. Madeira Hotel affords First-
 class Accommodation. Tariff 6s per day.

ASHHURST.

MASONIC HOTEL,
 ASHHURST.

A. E. SNOSWELL Proprietor.

SPEIGHT'S ALE ON TAP.
 Everybody Welcome.
 Telephone No. 10.

BELGROVE.

BELGROVE HOTEL,
 BELGROVE.

(Opposite Railway Station.)
JOSEPH STOCKTON ... Proprietor.
 The above old-established and popular
 Hostelry for the travelling public has
 been taken over by Mr. J. Stockton,
 late of Downie's Hotel, Murchison.
 Favourite stopping place for motorists
 on Nelson-West Coast Road. Nothing
 but the best of liquors kept. All old
 and new friends made welcome.

THE MOST UP-TO-DATE
 WAR PICTURES APPEAR
 In the

**N.Z. SPORTING & DRAMATIC
 REVIEW.**

Weekly.

Of all Newsagents and Booksellers.
 PRICE, 6d.

BLENHEIM.

ROYAL HOTEL,
 BLENHEIM.

(Late Royal Hotel, Nelson.)
 THE SPORTSMAN'S HOME.

TARIFF 4/6 PER DAY, 25/- WEEK.
R. CANN Proprietor.

EMPIRE HOTEL,
 BLENHEIM.

In intimating that I have taken over
 the above Hotel, I have every confidence
 that past patrons will renew their sup-
 port to the new regime. The public
 generally and Commercial will have
 every attention to their home comforts,
 and all sorts of liquors will be found
 to be of the very Best. Nothing is
 stocked that will be kept, as the very
 Best only will be sold, and good quality
 will not keep; it will have a quick sale.
TOM KEATING Proprietor.

BLUFF.



EAGLE HOTEL,
 BLUFF.

New and up-to-date; electric light, hot
 and cold water in bedrooms, and every
 modern convenience. Tariff 8s. per day.
W. HINCHEY Proprietor.

GOLDEN AGE HOTEL,
 BLUFF.

C. TULLOCH Proprietor.

The recognised Commercial House of
 the Town. First-class Table. Wines,
 Ales, and Spirits of the very Best.

BAY VIEW HOTEL,
 BLUFF.

The Most Southerly Hotel in the World.
IAN W. MACPHERSON Proprietor.

WINES, SPIRITS AND ALES GUAR-
 ANTEED TRUE TO LABEL.

BULLS.

CRITERION HOTEL,
 BULLS.

EXCELLENT ACCOMMODATION FOR
 THE TRAVELLING PUBLIC.

Choicest Brands of Liquors in Stock.
W. H. HOSKING Proprietor.

RANGITIKEI HOTEL,
 BULLS.

H. McMANAWAY notifies the Travel-
 ling Public that he has taken over the
 management of the above Hotel, which
 has been thoroughly renovated and re-
 furnished, and is now up-to-date in
 every department. Best Wines, Spirits
 and Ales in Stock. First-class Table
 and Accommodation. Phone No. 4.
H. McMANAWAY Proprietor.

CAMBRIDGE.



NATIONAL HOTEL,
 CAMBRIDGE.

Opposite the Town Hall and Jubilee
 Gardens. These fine, new, brick build-
 ings are handy to the Railway Station
 and the Famous Cambridge Domain.
 Undoubtedly the Best Appointed Hotel
 in the Waikato. Climate Unrivalled.
 Excellent Cuisine. Moderate Tariff.
 The Best Wines, Spirits and Beer only
 are served. Letters and Telegrams
 Promptly Attended to. Phone 131.
 Sample Rooms.

A. SHOSTROM Proprietor.

CARTERTON.

CLUB HOTEL,
 CARTERTON.

W. REDMOND Proprietor.

A HOME AWAY FROM HOME.

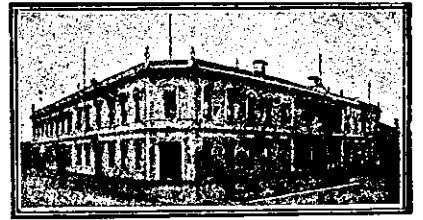
A WELCOME TO ALL.

Only Best of Wines, Spirits and Ales
 Stocked.

CHRISTCHURCH.

IMPERIAL HOTEL,
 BARBADOES AND ST. ASAPHS STS.,
 CHRISTCHURCH.

MR. J. JACKSON, late of the British
 Hotel, Lyttelton, and of Akaroa, has
 taken over the above Hotel, and will
 be pleased to see old friends and new
 patrons. The Hotel is pleasantly situ-
 ated, and offers every comfort of a
 home.



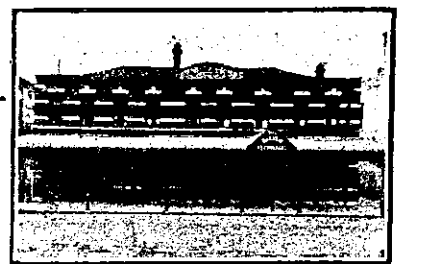
WHERE TO STAY IN CHRIST-
 CHURCH.

STOREY'S HOTEL.

Right Opposite Railway Station.
 Convenient to all Parts of City and
 Suburbs.

Electric Cars Start from Door.

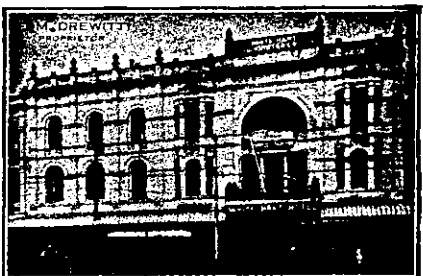
G. S. JAMES Proprietor.



BELVUE PRIVATE HOTEL,
 GLOUCESTER ST., CHRISTCHURCH.
 (Opposite "Times" Office.)

Excellent Accommodation and Cuisine
 for the Travelling Public. Members of
 the Theatrical Profession Specially
 Catered for. Terms Moderate.

MRS. HUCKS Proprietress.



WHITE HART HOTEL,
 CENTRE CHRISTCHURCH.

TARIFF 10s. PER DIEM.

F. M. DREWITT Proprietor.

UNITED SERVICE HOTEL,
 CHRISTCHURCH.

MR. J. MANDEL,

The Owner of the Hotel, is now in
 charge, and the Management is entirely
 under his Personal Supervision.

He is now spending over £2000 in
 additions, which will give 20 more front
 bedrooms, and the Hotel is being
 Renovated throughout.

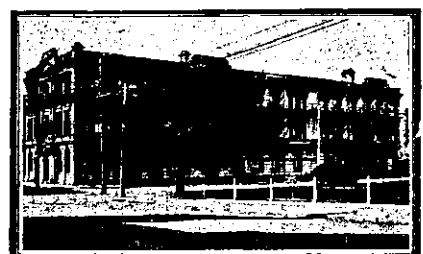
Tourists and Travellers to Christ-
 church can depend on receiving the
 Best Accommodation at the United
 Service.

SHADES HOTEL.

HEREFORD ST., CHRISTCHURCH.

The Favourite House of Visitors.
 Close to Post Office, Theatres, etc.
 Excellent Accommodation and Cuisine.
 Wines, Ales and Spirits of the Highest
 Orders. Crown Ales always on tap.
 Telegrams and Letters Promptly At-
 tended to. Telephone 1205.

J. I. DE MELMANCHE .. Proprietor.



THE CLARENDON,
 CHRISTCHURCH.

Recognised by Tourists and Travel-
 lers as one of the Finest Hostels in the
 Dominion. Situated on the River Bank,
 within one minute of Post Office, Banks,
 Theatres, etc. Tourists can rely upon
 receiving every Comfort and Attention.
 No pains are spared by the Proprietor
 of informing Visitors of places of in-
 terest and sights to be seen in the city.
J. T. SOUPER Proprietor.