

THE TOURIST AND TRAVELLER. WHERE TO STAY AND WHERE TO GO.

PALMERSTON NORTH.

THE CLUB HOTEL, PALMERSTON NORTH.

Stands on two acres of land; frontage 165ft.; promenade balcony; contains 60 bedrooms and private sitting-rooms, and 12 sample rooms. The Appointed House for the Association of N.Z. and Australian Commercial Travellers.

H. B. TUCKER,
Proprietor and Owner.

OCCIDENTAL HOTEL, PALMERSTON NORTH.

CAPTAIN J. MITCHELL, Proprietor

(Late of Dominion Hotel, Hawera.) This well-known Hotel, with the clock in the roof, has been taken over by MR. MITCHELL, who extends a hearty welcome to all old and new friends. Everything of the very best.

THE SPORTS HOTEL, CENTRAL HOTEL, PALMERSTON NORTH.

JAS. CRESS Proprietor.

MR. JAS. CRESS, formerly of Masterton and Trentham, has taken over the above Hotel. Everybody Welcome

PANMURE.

PANMURE HOTEL, PANMURE.

And DYER'S HALL, PANMURE.
HENRY H. DYER Proprietor.
WINES AND SPIRITS OF THE BEST BRANDS ONLY STOCKED.
A Hearty Welcome Always Awaiting Old Friends and New Faces.

PAPAKURA.

GLOBE HOTEL, PAPAKURA.

MRS. I. SMITH Proprietress.

The Leading Commercial Hotel in the District. Excellent Accommodation for Tourists, Travellers and Visitors. First-class table always kept. All meals 1s. 6d. Wines and Spirits of the Best quality. Popular Lion Ale on tap. Every attention and comfort. Afternoon Tea for motoring parties a speciality. Good stabling and paddocks. Horses and traps for hire. Moderate tariff.

PATEA.

THE ALBION HOTEL, PATEA.

First-class Accommodation for Tourists, Families and Travellers. Wines, Ales and Spirits of the Best.

J. A. COOGAN Proprietor.

PICTON.

FEDERAL HOTEL, PICTON.

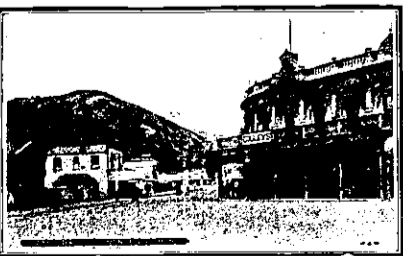
THE RECOGNISED COMMERCIAL HOUSE OF THE DISTRICT.
W. T. WOOD Proprietor.
(Late of Palmerston North.)



Everything of the very best. All Wines and Liquors True to Label. Ward's Christchurch Prize Ales on Draught. Mr. Woods extends a hearty welcome to all his old friends in the Manawatu to spend a holiday in Picton. Tariff 8s. per day or £2 2s. week.

OXLEY'S HOTEL, Under New Management. PICTON.

F. S. RUMBOLD Proprietor.



This Well-known, Popular and Up-to-date Hotel has been entirely renovated, and, being fitted with every modern convenience, is specially suited to the requirements of the travelling public. Oxley's Hotel is an ideal house for holiday-makers and tourists. Tariff reasonable, and comfort guaranteed. First-class table kept, and only the very best liquors dispensed. Electric light installation throughout. Hot and cold shower baths. Motor cars and motor boats are always available in Picton, and orders forwarded through Oxley's Hotel will receive careful and prompt attention.

QUEENSTOWN.

GRAND VIEW

PRIVATE BOARDING ESTABLISHMENT, QUEENSTOWN.

Excellent Accommodation for Tourists. Occupying a position on the rise, it commands an uninterrupted view of the town, the Remarkables and the Lakes. Within 2min. of the wharf. Letters and telegrams receive prompt attention.

MISSIS POWELL ... Proprietresses.

RANGIORA.

THE JUNCTION HOTEL, RANGIORA.

C. ALLINGTON Proprietor.

Letters and telegrams receive prompt attention. First-class Billiard Table. Arrangements made for parties to be driven to all parts of the district.

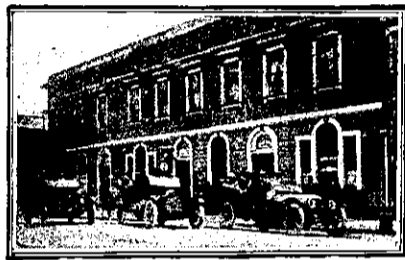
RANGIRIRI.

RANGIRIRI HOTEL, RANGIRIRI.

GEO. L. WASHER Proprietor

FIRST-CLASS ACCOMMODATION FOR THE TRAVELLING PUBLIC. BEST BRANDS OF WINES AND SPIRITS.

REEFTON.



DAWSON'S HOTEL, REEFTON.

The Leading Hotel in Reefton. Wines and Spirits of the very Best Brands.

JAMES S. VIAL Proprietor.

RIVERTON.

WHERE TO STAY IN REEFTON. RAILWAY HOTEL, Directly Opposite Railway Station.

Ideal Hotel for a Holiday at the Seaside. Everything of the very Best.

CHAS. DE CLIFFORD ... Proprietor.

THE BRIDGE

PRIVATE BOARDING ESTABLISHMENT, RIVERTON.

Excellent Accommodation for Tourists and Visitors. Splendid situation, overlooking the town, the Railway and the Estuary. Within 5 minutes' walk of Railway Station. Terms Moderate.

MRS. BLACK Proprietress.

ROTORUA.

LAKE HOUSE HOTEL.

OHINEMUTU, ROTORUA.

This Hotel Commands an Imposing Situation on the Shores of Lake Rotorua. Mineral and Mud Baths in Hotel Grounds.

Free for Guests, the Mineral Waters of which have Highly Curative and Valuable Properties. Excellent Cuisine. Electric Light. Splendidly laid out Grounds.

E. W. G. SMITH Proprietor.
(Late of Cambridge and Tirau.)

THE GEYSER HOTEL, ROTORUA.

Golf Links Adjoin the Hotel.

SITUATED AT WHAKAREWAREWA. THE AMPHITHEATRE OF SPOUT BATH.

Free to Guests. Famous for its Extraordinary Cures of Rheumatism, Neuralgia, Lumbago, Sciatica, Kidney, Liver and Other Complaints.

Five Minutes from Rotorua. Bus Free from Station to Hotel for Guests.

TARIFF FROM 9s. PER DAY.

ROX. WOODWARD Proprietor.

(Late Grand and Palace Hotels, Rotorua, and Royal Hotel, Auckland.)

ROSS.

EMPIRE HOTEL, ROSS.

J. McTAGGART Proprietor.

The Tourist Resort of the West Coast for Visitors wishing to see Franz Josef and Fox Glaciers, undoubtedly the Grandest Sight in New Zealand. First-class Accommodation. Terms Moderate.

ROXBURGH.

Under New Management. GRAND HOTEL, SCOTLAND ST., ROXBURGH.

M. SULLIVAN Proprietress.

Accommodation right up to the times. First-class table a speciality. Excellent beds. Only Best Brands of Ales and Liquors kept. Two full-sized billiard tables. Good stabling.

THE COMMERCIAL HOTEL, ROXBURGH, CENTRAL OTAGO.

The Starting Place for Coaches Between Alexandria and Lawrence.

EVERY COMFORT AND ATTENTION.

A. BALLANTINE Proprietor.

SANSON.

JUNCTION HOTEL, SANSON.

MRS. Z. L. BUCKERIDGE,
Proprietress.

Wanganui to Wellington's most favourite stopping place for Motorists and Travellers. Accommodation paddocks for stock. Splendid duck-shooting in vicinity, big bags to be got. Everything of the very best. A hearty welcome to all. Phone No. 6, P.O. Box 7.

STEWART ISLAND.

FERNDALE HOUSE, STEWART ISLAND.

The Leading House for Tourists and Travellers, situated on the rise overlooking Half Moon Bay, and close to Wharf. First-class Accommodation. Excellent Cuisine. Tariff 30s. per week.

MRS. C. HICKS Proprietress.

STOKE.

TURF HOTEL, STOKE.

Four Miles from Nelson.

Best Quality of Wines and Spirits supplied. Tariff, 6s. 6d. per day. All meals 1s. 6d. Permanent Boarders by arrangement. Favourite stop over place for motorists.

L. M. NAYLOR Proprietor.

STRATFORD.

EMPIRE HOTEL, STRATFORD.

This Well-known House of Call has been taken over by MR CECIL ARDEN, well-known in Sporting Circles. A Hearty Welcome to all Old and New Friends. Speight's Beer on tap, and Wines and Spirits True to Label. Tariff 6/6 per Day.

STRATFORD HOTEL, BROADWAY, STRATFORD. (Opposite Newton King's Offices.)

This Hotel is now under New Management, and is being thoroughly Renovated. Liquors of the Best, and Speight's Beer only drawn.

F. WHITTLE Proprietor.

SOUTHLAND.

CROWN HOTEL, OTAUTAU, SOUTHLAND.

M. O'BRIEN Proprietor.

Everything of the Very Best. Motor Cars for Hire, Tours Arranged to all Parts of the District. Horses and Traps for Hire. Excellent Stabling.

TAIHAPE.



GRETNA HOTEL, TAIHAPE.

FIRST-CLASS ACCOMMODATION FOR TRAVELLERS.

Every Comfort and Convenience.

First-class Table d'Hote.

Well Equipped Commercial Rooms.

ALL LIQUORS OF THE BEST.

W. McLENNAN Proprietor.

TAKAKA.



TELEGRAPH HOTEL, TAKAKA.

Newly erected building containing all the Latest Conveniences. Splendidly Furnished and Replete Throughout with Everything Up-to-date. Only the Best Brands of Liquors Stocked. Hot and Cold Baths. Excellent Cuisine; Personal Supervision. Speight's Ales on Tap. A Hearty Welcome to all.

J. T. MOORE Proprietor.

GLOBE HOTEL,

WAITAPU, TAKAKA DISTRICT.

Ranks among the First-class Hotels throughout the Province, and is a Favourite Resort for all Tourists, Commercial Men and Travellers generally. Telephonic and telegraphic connection on the premises. All kinds of vehicles and horses for hire at shortest notice. Best Brands only of Ales, Wines and Spirits dispensed. A Trial Solicited. Dodsons and Sons' Ales on Draught.

JAMES PAGE Proprietor.

TARANAKI.

OKATO HOTEL, TARANAKI.

On Main New Plymouth-Opunake Road. Favourite stopping place for Travellers. Everybody made welcome. Capital accommodation. MR. A. SANSON, formerly of Sandon, wishes all his friends to know that he is in possession of the above well-known Hotel. Everything true to label. Paul's Ale on tap.

TARATAHI.

TARATAHI HOTEL, TARATAHI.

W. M. HALLEY Proprietor.

THE BEST KNOWN HOUSE IN THE WAIRARAPA.

Everybody Calls and Everybody Welcome.

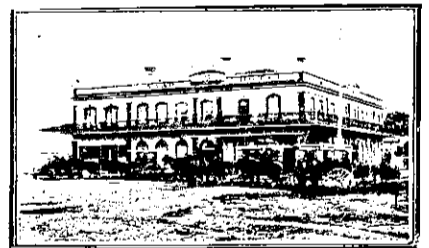
TARIKI.

TARIKI HOTEL.

TARIKI, Only Hostelery in Township.

MR. F. J. MILLS, late of the Police Force, Auckland, desires to inform his many friends that he has taken over the above well-known house of call. Closest Hotel in Taranaki to Mount Egmont, being within one mile from foot of mountain. Everything of the very best. A hearty welcome to all.

TAURANGA.



STAR HOTEL, TAURANGA.

THE LEADING COMMERCIAL HOUSE IN THE BAY OF PLENTY. Best of Accommodation. Excellent Cuisine. Hot and Cold Baths. Telegrams: "Star," Tauranga. Phone 6. P.O. Box 21.

A. BROWN Proprietor.

TE AROHA.

GRAND HOTEL, TE AROHA.

Directly Opposite the Domain and Baths.

MRS. M. LAWLESS,

(Late of the Palace Hotel, Te Aroha). Has Pleasure in informing her Numerous Friends and Patrons that SHE HAS PURCHASED THE FREEHOLD OF THE

GRAND HOTEL, TE AROHA.

And that it will henceforth be Conducted under her Personal Management.

In Thanking her Friends and Patrons for their Generous Support in the past. MRS. LAWLESS trusts that by strict Attention to Business to merit a Continuance of their Patronage.

TERMS MODERATE. CUISINE EXCELLENT. Porter Meets all Trains.

N.Z. SPORTING & DRAMATIC REVIEW. Weekly.

Of all Newsagents and Booksellers.

PRICE, 6d.