

PROTECTION

Insurance with
The South British Insurance Co., Ltd.
 and
 the administration of your Estate by
The Guardian Trust and Executors Co. of N.Z. Ltd.
 merged in and guaranteed by
 The SOUTH BRITISH, whose assets exceed £1,000,000.

DON'T LOOK OLD!



But restore your grey and faded hairs to their natural colour with **Lockyer's Sulphur Hair Restorer**. It gives health to the Hair and restores the natural colour. It cleanses the scalp, and makes the most perfect hair dressing.

LOCKYER'S SULPHUR HAIR RESTORER.

1/6 Sold Everywhere. 1/6

This world-famed Hair Restorer is prepared by the great Hair Specialists, **J. Pepper & Co., Ltd.**, Bedford Laboratories, London, England, and can be obtained from any Chemists and Stores throughout the world.

NEWMAN BROS. ROYAL MAIL CONTRACTORS. CROWN STABLES, NELSON.

Vehicles of all Descriptions on Hire. Livery Stables. Motor Car Proprietors.

MAIL SERVICES:

Nelson-Blenheim Service.—Leave Nelson Daily 9 a.m., return 3.30 p.m. Leave Blenheim Daily 9 a.m., return 3.30 p.m.

Nelson-Riwaka Service.—Leave Nelson 9 a.m. and 4 p.m. Daily arrive Riwaka 11.30 a.m. and 6 p.m. Leave Riwaka 8.30 a.m. and 3.30 p.m., arrive Nelson 11.30 a.m. and 6 p.m.

WEST COAST SERVICES.

Train leaves Nelson Tuesday, Thursday, Saturday for Glenhope to connect with cars for Westport and Reefton same day.

Leaves Westport and Reefton Monday, Wednesday, Friday, and arrive Glenhope same day to connect with train to Nelson.

Westport to Reefton, Daily. Reefton to Westport, Daily.

MOTOR CARS available at Shortest Notice, and Special Trips Arranged for. Also MOTOR CHAR-A-BANC, carry 30 Passengers. MOTOR LORRY available for Carriage of all Classes of Goods Throughout the District.

Apply CROWN STABLES, NELSON, or Private Address, P.O., Brightwater. Phone 124.

BENGER'S FOOD is universally recommended by medical men.

For use during illness and convalescence.

For weakly infants and overgrowing children.

As a supplementary food in malnutrition, and for all cases of dyspepsia and impaired digestion.

BENGER'S Food



For **INFANTS, INVALIDS and the AGED.**

is comforting, when other foods cause pain. It is the most easily digested of all foods, but is not pre-digested.

Benger's Food is sold by Druggists, etc., everywhere.

BENGER'S FOOD, LTD.
MANCHESTER, ENGL.

Branch Office—
NEW YORK (U.S.A.)
92, William Street,
SYDNEY (N.S.W.)
227, Pitt Street,

Canadian Agents—
National Drug and
Chemical Co., Ltd.,
24 St. Gabriel St.,
Montreal,
and Branches
throughout Canada.

ASK FOR—

NELSON ALES

From the famed **RAGLAN BREWERY**

Prize Medallists in Melbourne, Sydney and N.Z.
**HARLEY & SONS, Brewers, Bottlers,
and Maltsters, NELSON.**

The National Bank of New Zealand, Limited

HEAD OFFICE: 17, MOORGATE STREET, LONDON, E.C.

AUTHORISED CAPITAL, £3,000,000.

Subscribed, £2,250,000. Paid-up, £750,000. Reserve Fund, £685,000.

BANKERS:

Bank of England, Lloyds Bank, Limited, The Royal Bank of Scotland.
 Secretary and London Manager—H. F. Freshwater.

HEAD OFFICE IN THE DOMINION: WELLINGTON.

General Manager, D. W. DUTHIE. Asst. General Manager, J. M. McLEAN.

DRAFTS AND LETTERS OF CREDIT ISSUED TO TRAVELLERS.
 CORRESPONDENTS THROUGHOUT THE WORLD.

"Double Wear"

"DUROX" SOLES
 For Business Men

The Business Man will Appreciate the economy of "Durox" Soles. He will be able to figure to a nicety the saving effected by a sole that gives Double the wear of Ordinary Soles, and it will strike him as being Good Business to have his boots soled with "Durox" Leather.



SOLE AGENT—

KEMP'S DOUBLE-LIFE FOOTWEAR.

**B. J. M. KEMP, GENT'S OUTFITTER,
 QUEEN & SWANSON STS., AUCKLAND.**



PURIRI
 NATURAL MINERAL WATER

When you are feeling dull in the morning, or if you suffer from one of those many ills that human flesh is heir to—don't resort to the medicine chest. Drink

PURIRI Natural Mineral Water

for 'tis nature's simple and effective remedy. Puriri is obtainable at all Hotels, and it adds a sparkle to spirits.

Try it when out with a friend.

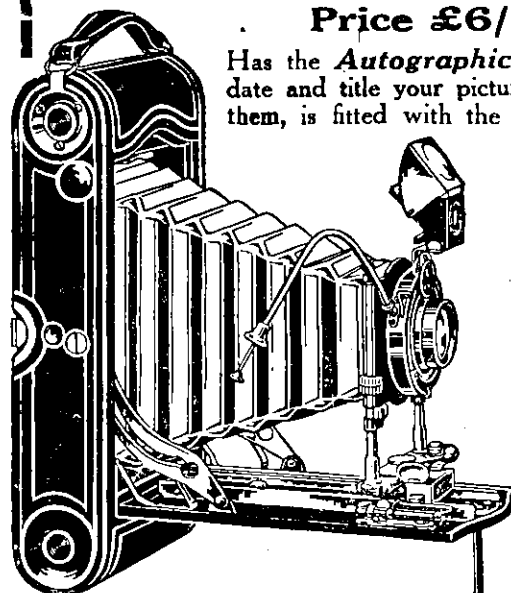
The Campbell & Ehrenfried Co. Ltd.

Proprietors.

The New 3A KODAK

Anastigmatic and Autographic

Price £6/10/-



Has the *Autographic* feature whereby you can date and title your pictures at the time you take them, is fitted with the new Kodak Anastigmat f.7.7 lens—a lens that leaves nothing to be desired in definition (sharpness) and flatness of field, and has more speed than even the best of the Rapid Rectilinear lenses. High grade in every detail.

Takes Pictures 3½ x 5½
 (Postcard size)

Sold by All
Kodak Dealers

Complete Catalogue Free at your Dealer's or by Mail.
 Kodak (Australasia), Ltd.,
 Winton, Auckland, Dunedin 34

YOU CAN CONDUCT THE GOLDBSTREAM GUARDS BAND

You have heard the Gramophone rendering old favourites and classical pieces. Your interpretation of those musical items may have been somewhat different.

The AEOLIAN VOCALION

For
 Cash
 or
 on
 Easiest
 Terms

is an improved Gramophone *under your personal control*. The wonderful *Graduola* device enables you to control the tonal effects of any musical selection produced from an ordinary Disc record. The variety of effects is indeed wonderful, and the individuality of the owner may be expressed, at will, in every piece that is played.

The Aeolian Vocalion with its many improvements costs no more than the better grades of the ordinary Gramophone. *Come and hear it at the Sole Agents:*

British & Continental Piano Co.

A. HEGMAN, Manager.

STRAND ARCADE

AUCKLAND