

THE TOURIST AND TRAVELLER. WHERE TO STAY AND WHERE TO GO.

AUCKLAND.



The.....
W A V E R L E Y
HOTEL and
RESTAURANT,
QUEEN STREET, AUCKLAND.
 European Plan.
 Arthur A. Paape Proprietor.

BELGROVE.

BELGROVE HOTEL,
BELGROVE.
 (Opposite Railway Station.)
JOSEPH STOCKTON ... Proprietor.
 The above old-established and popular
 Hostelry for the travelling public has
 been taken over by Mr. J. Stockton,
 late of Downie's Hotel, Murchison.
 Favourite stopping place for motorists
 on Nelson-West Coast Road. Nothing
 but the best of liquors kept. All old
 and new friends made welcome.

BLENHEIM.

GROSVENOR HOTEL,
BLENHEIM.
 (Late of the Taueru Hotel, Wairarapa.)
 Good stabling and Paddocking. Cap-
 ital table kept. Best of Wines, Beer,
 and Spirits Sold. Tariff, 6s. day, or 30s.
 weekly. A Home away from Home.
J. DEVEREAUX Proprietor.

EMPIRE HOTEL,
BLENHEIM.
 In intimating that I have taken over
 the above Hotel, I have every confidence
 that past patrons will renew their sup-
 port to the new regime. The public
 generally and Commercial will have
 every attention to their home comforts,
 and all sorts of liquors will be found
 to be of the very Best. Nothing is
 stocked that will be kept, as the very
 Best only will be sold, and good quality
 will not keep; it will have a quick sale.
TOM KEATING Proprietor.

GROVETOWN HOTEL,
NEAR BLENHEIM.
MRS. E. WHITELAW .. Proprietress
 Situated in an Excellent Shooting and
 Fishing District, this Hotel offers many
 advantages for those requiring a holi-
 day. Trout and Deer abound in large
 numbers in the locality. Tariff 4/6 per
 day. Wines, Ales, and Spirits of the
 Very Best.

BLUFF.



EAGLE HOTEL,
BLUFF.
 New and up-to-date; electric light, hot
 and cold water in bedrooms, and every
 modern convenience. Tariff 8s. per day.
W. HINCHEY Proprietor.

CLUB HOTEL,
BLUFF.
 (Opposite Railway Station.)
A. F. TAYLOR Proprietor.

First-class Accommodation for Tour-
 ists and Commercial. Everything of
 the very Best. New House and all
 up-to-date appointments. Tariff 8s. per
 diem.

GOLDEN AGE HOTEL,
BLUFF.
C. TULLOCH Proprietor.

The recognised Commercial House of
 the Town. First-class Table. Wines,
 Ales, and Spirits of the very Best.

BAY VIEW HOTEL,
BLUFF.
 The Most Southerly Hotel in the World.
IAN W. MACPHERSON Proprietor.

WINES, SPIRITS AND ALES GUAR-
 ANTEED TRUE TO LABEL.

BULLS.

CRITERION HOTEL,
BULLS.
 EXCELLENT ACCOMMODATION FOR
 THE TRAVELLING PUBLIC.
 Choicest Brands of Liquors in Stock.
W. H. HOSKING Proprietor.

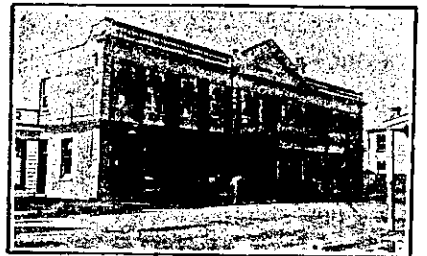
CAMBRIDGE.



NATIONAL HOTEL,
CAMBRIDGE.
 Opposite the Town Hall and Jubilee
 Gardens. These fine, new, brick build-
 ings are handy to the Railway Station
 and the Famous Cambridge Domain.
 Undoubtedly the Best Appointed Hotel
 in the Waikato. Climate Unrivaled.
 Excellent Cuisine. Moderate Tariff.
 The Best Wines, Spirits and Beer only
 are served. Letters and Telegrams
 Promptly Attended to. Phone 131.
 Sample Rooms.

A. SHOSTROM Proprietor.

CAMBRIDGE.



MASONIC HOTEL,
CAMBRIDGE.
 New and Up-to-date Brick House. Just
 Rebuilt. All Modern Conveniences.
**LEADING FAMILY AND COMMER-
 CIAL HOTEL.**
 Under Personal Supervision. Phone 1.
JOHN H. TULLY Proprietor.

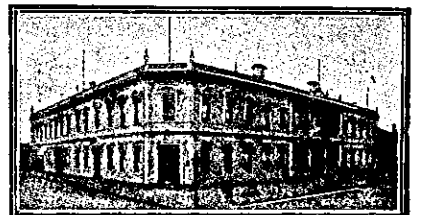
CARTERTON.

CLUB HOTEL,
CARTERTON.
W. REDMOND Proprietor.
 A HOME AWAY FROM HOME.
 A WELCOME TO ALL.
 Only Best of Wines, Spirits and Ales
 Stocked.

CHRISTCHURCH.

IMPERIAL HOTEL,
BARBADOES AND ST. ASAPHS STS.,
CHRISTCHURCH.
MR. J. JACKSON, late of the British
 Hotel, Lyttelton, and of Akaroa, has
 taken over the above Hotel, and will
 be pleased to see old friends and new
 patrons. The Hotel is pleasantly situ-
 ated, and offers every comfort of a
 home.

BRISTOL HOUSE
 288, CASHEL ST., CHRISTCHURCH.
 First-class Private Board and Resi-
 dence. 1d. tram passes door. Hot and
 Cold Baths. All Conveniences. Good
 Table.
J. CHRISTENSEN Proprietress.



WHERE TO STAY IN CHRIST-
 CHURCH.
STOREY'S HOTEL,
 Right Opposite Railway Station.
 Convenient to all Parts of City and
 Suburbs.
 Electric Cars Start from Door.
G. S. JAMES Proprietor.

EMPIRE HOTEL,
CHRISTCHURCH.
BERT COCK Proprietor.
 (Formerly of New Plymouth and
 Central Hotel, Wellington.)

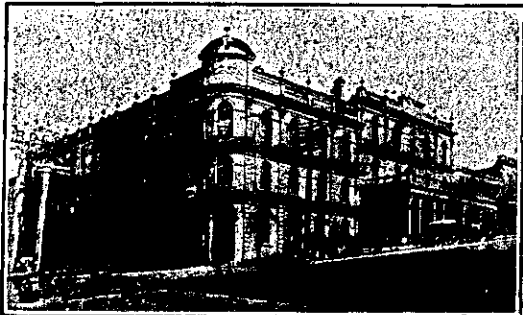
A Hearty Welcome to all Old and
 New Friends. All Ales, Whiskies and
 Wines of the very Best. The Hotel
 offers all the advantages of a home
 away from home.

WINDSOR PRIVATE HOTEL
MANCHESTER ST., CHRISTCHURCH.
 Close to Railway Station and Centre
 of City. Tariff, 5s. per day; 30s. per
 week.
MRS. N. J. JOHNSTON, Proprietress.

GLADSTONE HOTEL,
CHRISTCHURCH.
 Corner Durham and Peterborough Sts.
 Under Entirely New Management.
 The above well-known House has been
 entirely renovated and refurbished, and
 offers Excellent Accommodation to
 Visitors. Within one minute of penny
 tram to Square. First-Class billiard
 table.
ALEX. YOUNG Proprietor.

"SHERWOOD."
 Private Boarding Establishment.
 245, CASHEL ST., CHRISTCHURCH.
 "Sherwood" is a large two-storey
 building in the midst of a fine garden.
 First-class Accommodation for Visitors.
 Excellent Cuisine. Terms Moderate.
MRS. SIMCOX Proprietress.

THE ROYAL HOTEL,
VICTORIA STREET, AUCKLAND.



Every
 Convenience
 and Comfort
 found in a
 Modern Hotel.

Most Popular
 Hotel with
 Colonial and
 Inter-Colonial
 Travellers.

TERMS FROM 10s. 6d. PER DIEM.
D. COLLINS, Proprietor.
 Late of Clarendon Hotel Christchurch.

STAR HOTEL.

(Under New Management.)

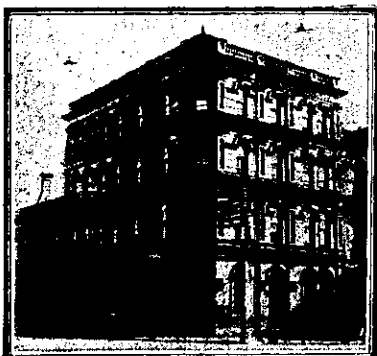
ALBERT STREET, AUCKLAND.

S. J. ATKINS Proprietor.

FIRST-CLASS ACCOMMODATION FOR
 TOURISTS.

Easy Walk from Wharves and Railway
 Station, and two minutes from Main
 Thoroughfare — Queen Street.

TARIFF: 10s. to 12s. 6d. per day,
 according to location of room. Rates
 per period and for Private Rooms
 quoted on Application. Special Rates
 for Commercial Travellers.



ALBION HOTEL,
 CORNER HOBSON ST. AND WEL-
 LESLEY ST. WEST, AUCKLAND.
 This Hotel is under entirely new
 Management, and, having been refur-
 nished and renovated throughout offers
 Special Facilities for Visitors to Auck-
 land. The Best of Liquors only Stocked.
 Special Cuisine; personal supervision.
 Letters and Telegrams Promptly At-
 tended to. Phone 2852.
C. T. LUXFORD Proprietor.

CENTRAL HOTEL,
 VICTORIA STREET, AUCKLAND.
 (Under New Proprietorship.)

FIRST-CLASS ACCOMMODATION FOR
 TOURISTS AND VISITORS.

All the Best Brands of Ales, Spirits
 and Wines in Stock.

COMMERCIAL TRAVELLERS'
 HOTEL.

All Letters and Telegrams Receive
 Prompt Attention.

Boats and Trains Met.

G. W. HENDERSON Proprietor.
 (Late Esplanade and Okoroire Hotels.)

OCCIDENTAL HOTEL,
 VULCAN LANE,
 AUCKLAND.

MRS. N. LYNCH Proprietress.
 (Late of Clarendon and City Hotels,
 Auckland.)

BASS'S
BRITISH HOTEL,
 QUEEN STREET, AUCKLAND.

EVERYTHING GUARANTEED OF
THE BEST.

Best Accommodation.
 Best Liquors and Beers.
 Best Attention.

Best Call and See

FRED. BASS.
 Telephone 97.

CALEDONIA HOTEL,
 JORNER OF KARANGAHAPE ROAD
 AND SYMONDS STREET.

CAMPBELL - EHRENFRIED'S
 SPARKLING ALE ON DRAUGHT.
 Ales, Wines and Spirits of the BEST
 BRANDS ONLY, and all True
 to Label.

JOHN STACKPOLE Proprietor.

KIDD'S COMMERCIAL
HOTEL,
 CORNER HIGH AND SHORLAND
 STREETS, AUCKLAND.

SPEIGHT'S XXXX ALE ALWAYS ON
 TAP.

WILLIAM JONES Proprietor.

AKAROA.

Visitors to Akaroa can Obtain Superior
 PRIVATE BOARD AND RESIDENCE
 at

**D. HANDSIDE'S PRIVATE BOARD-
 ING ESTABLISHMENT,**
 JOLLIE STREET, AKAROA
 (Opposite Pilkington's Motor Garage).
 Close to Main Wharf.
 Tariff Moderate. All Conveniences.

MADEIRA HOTEL,
 LAVAUD STREET, AKAROA.

H. W. PIPER (late Christchurch)
 wishes to inform the public of Akaroa
 and Surrounding Bays of the Peninsula
 and Christchurch that he has taken
 over the lease of the above Hotel, and
 that he is ready to Accommodate Tour-
 ists and Visitors in his Commodious
 House. Madeira Hotel affords First-
 class Accommodation. Tariff 6s per day.

ASHHURST.

MASONIC HOTEL,
ASHHURST.

A. E. SNOSWELL Proprietor.

SPEIGHT'S ALE ON TAP.
 Everybody Welcome.
 Telephone No. 10.