

The Finest Holiday in N.Z.

ROUND TRIP

PER

The Mt. COOK MOTOR COY. LTD'S. WONDERFUL CARS, including Mt. Cook, Southern Alps, Tekapo, Lindis Pass, Pembroke, Lake Wanaka, Crown Range, Queenstown, Lake Wakatipu.

All Particulars from :

Mount Cook Motor Company, Ltd., Fairlie and Queenstown, or Govt. Tourist Dept; or Thos. Cook & Son.



EMPIRE PRIVATE HOTEL FRANKTON JUNCTION.

NEW THREE-STOREY FIRE-PROOF CONCRETE HOUSE OF 60 ROOMS, BEAUTIFULLY FURNISHED.

Electric Light.

FIRST-CLASS CUISINE.

Hot and Cold Baths.
All Trains Met.

'Phone 325.

J. A. MILNE Proprietor.

Visitors to Greymouth Requiring Motor Cars, Telegraph or Write

H. McGLASHAN, GREYMOOUTH.

Experienced drivers. Tours to any part of the Coast. Reasonable charges. All trains and steamers met.

C. W. CLARKE, AERATED WATER MANUFACTURERS, TUTANEKAI STREET, ROTORUA.

Home-brewed Stone Ginger Beer and Hop Beer a Specialty.

Ring up Phone 23.

LINGA LONGA PRIVATE HOTEL, 21 EDEN CRESCENT, AUCKLAND.

ENTIRELY RENOVATED.

EVERY COMFORT AND CONVENIENCE. CENTRAL TO TRAMS AND TRAINS. This Hotel offers all the advantages of a home away from home.

EXCELLENT TABLE.

Letters and Telegrams promptly attended to.

Terms, 6s. per day.

Under Personal Supervision
MRS. E. WATTS Proprietress.
'Phone 721.

MOTOR TRIPS

Can be Arranged to Kaikoura, Nelson and Blenheim, or any Part of the South Island, by Wire or Letter.

Trips Undertaken from Christchurch or any place desired at Shortest Notice.

32 H.P. HUPMOBILES,
With Careful and Competent Drivers.

J. C. MERCER'S GARAGE, WAIKARI, North Canterbury.

Opposite Star and Garter Hotel.

J. C. MERCER, Winner of Mt. Cook Motor Reliability Trial.

LAKE TAUPO

(Hot Lake District).

NAMED THE ANGLERS' PARADISE.

8 HOURS MOTOR FROM NAPIER.

Napier to Taupo is undoubtedly one of the most interesting and romantic scenic routes in the Southern Hemisphere, and for Rugged Mountain Landscape is unsurpassed.

A motor car leaves Napier on Thursday at 8 a.m., lunching at Tarawera, arriving Taupo 4 p.m. Taupo depart Friday 8 a.m., Tarawera noon, arrive Napier at 4 p.m. Motor service 1st December to 30th April.

The mail coach leaves Napier on Monday 6.30 a.m., staying at Tarawera overnight, reaching Taupo about 4 p.m. Taupo depart Wednesday 7 a.m., arrive Napier Thursday, about 4 o'clock.

Fares per coach, Napier to Taupo, Single, £2; Return, £3 10s. Fares per motor car, Napier to Taupo, Single £3 10s.; Return, £6.

Full particulars at Government Tourist and T. Cook and Sons.

H.B. MOTOR COMPANY, LTD., PROPRIETORS, NAPIER.

ROYAL MAIL MOTOR COACHES, AKAROA AND LITTLE RIVER.

PILKINGTONS (LTD.)
Motor Coaches leave Little River for Akaroa 11.10 a.m., and Akaroa to Little River 9 a.m. daily. Passengers allowed 18lb luggage free. A charge of 1d. per lb for excess weight will be made. Telegrams: Pilkington, Akaroa. Telephone, No. 5, Akaroa.

TAURANGA-TE PUKE- ROTORUA MOTOR SERVICE.

MESSRS. WILLIAMS, GERAGHTY AND COLLETT are now running an Up-to-date Daily Motor Service to Rotorua via Te Puke and Paengaroa.

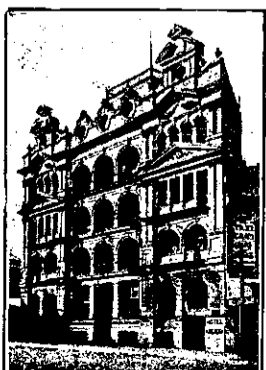
As only the best Cadillac, Overland, Studebaker and other cars are used, this is the quickest and most convenient Motor Service from Tauranga to Rotorua.

Cars leave 9 a.m. daily, arriving Rotorua about 2.30 p.m., connecting with train to Hamilton, Frankton Junction and Main Trunk line.

Fares: Single, £1 5s.; Return, £2.

W. J. BAIGENT, Agent, WHARF STREET, TAURANGA. 'Phone 78.

ARCADIA PRIVATE HOTEL, LAMBTON QUAY, WELLINGTON.



Replete with every modern convenience. Electric light throughout. Containing 79 rooms; well lit and ventilated.

Central position to Railway Trains and Post Office.

Telegrams and Letters receive prompt attention.

Tariff Moderate.

MRS. E. COCKAYNE,
Proprietress.

KING'S COURT

Private Hotel.

UPPER QUEEN STREET,
AUCKLAND.

The Most Up-to-date Private Hotel in the Dominion.

Situated in Three Acres of Grounds,
Charmingly Laid Out.

TENNIS COURT
GYMNASIUM
BILLIARD TABLE.

Magnificent View from Balconies.

Fireproof,

Containing 80 Rooms.

UNDER NEW MANAGEMENT.

ENTIRELY RENOVATED.

Telegrams:

"King's Court," Auckland.

'Phone 2256.

TERMS MODERATE.

G. ARROWSMITH, Proprietor.
(Late of New Plymouth.)



ROYAL MAIL
Nelson-Motueka-Takaka Motor Car Service.

NORMAN L. EMMS Proprietor.

Time-table: Nelson-Takaka, Tues., Thurs., Sat. 10 a.m. Takaka-Nelson, Mon., Wed., Fri. 10 a.m. Fares, 20s. Single; 38s. Return. Book seats in Nelson, Tattersall's Stables ('phone 39); private address, Wakatu Hotel ('phone 120). Telegrams noted.

HOW TO SEE MARLBOROUGH & NELSON

Best Motor Tours in New Zealand. Trips to all Parts of South Island.



First car to make trip to Havelock via Grove Road.

No trip too short or too long. The Sportsman's Motorist. Reasonable Charges. All Trains and Steamers met. Overland Touring 35 h.p. Car (Latest Model). Telephone No. 1 Picton.

JACK LOVE Proprietor.
PICTON.



ROYAL MAIL
Waitotara Railway and Waitotara Motor Service.

And Livery and Bait Stables. Gligs on hire at all hours. All trains met at Waitotara, and tours arranged to all parts of the district. Experienced drivers. Charges moderate. Telegrams: MRS. W. A. HURLEY, Waitotara.



VISITORS TO NEW PLYMOUTH REQUIRING MOTOR CARS

Communicate with
H. HEFFORD,
MORLEY STREET.
Tours arranged to all parts of district and Mt. Egmont. Charges Reasonable. Experienced Drivers.

OXFORD ROYAL HOTEL, TIRAU.

Situated Between Cambridge and Rotorua.

W. F. BELL Proprietor.
First-class Accommodation for Visitors, Motorists and the Travelling Public.

Waitomo Caves Hostel.

Waitomo, Ruakuri,
and Aranui Caves,

Reached by Daily Train from Wellington or Auckland.

THE Government Hostel at Waitomo is situated in a position from which the caves can be conveniently visited, and is connected by Telephone with the local Post and Telegraph Office.

TARIFF

Adults - 8s per Day.

Single Meals - 2s each.

Children between the ages of three and 12 half-price.

Obtain your tickets from the Govt. TOURIST BOOKING BUREAUX:

Wellington, G.P.O. Bldg.
(opposite Queen's Wharf)

Auckland: Custom Street.

NO EXTRA Charge for Booking.



WARD-KAIKOURA PASSENGER LINE.

THOS. J. BUTT,

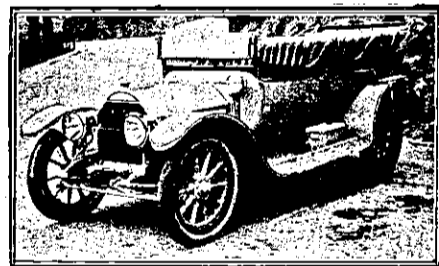
Through Booking to Parnassus (in conjunction Kaikoura Motor Co., Ltd.), and thence rail to Christchurch, or vice versa to Blenheim and Picton. Through the Finest Scenery in New Zealand.

Charges Very Reasonable, 58 Miles (Ward-Kaikoura) Single £1 5s., Return £2 5s. Through booking to Parnassus (96 miles), Single £2 5s. Return £4.

Address all Letters and Telegrams Ward or Kaikoura.

THOS. J. BUTT Proprietor.

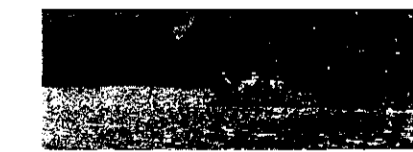
BEAUMONT-ROXBURGH MOTOR SERVICE.



FAST MOTOR SERVICE.

The 20 h.p. Cadillac Car, shown above, runs from Beaumont to Roxburgh every Morning in time to connect with trains to Dunedin, and returns to Beaumont after arrival of train in Beaumont.

FURTHER PARTICULARS:
O. R. JONES Proprietor.
LAWRENCE.



LAUNCH "WAINUI."
N. GESTRO Proprietor.
PICTON.

Fishing Excursions and Picnic Parties Specially Catered for. Trips to all Parts of the Sounds. My Motto: Civility and Attention. Charges Moderate.

E. MORRIS, JUNR., FUNERAL DIRECTOR.

Head Office and Works:
60, TARANAKI ST., WELLINGTON.

During the last five years, Mr. Morris has carried out over 2000 funerals.

TELEPHONE 937.

Undertaking work carried out in all parts of New Zealand. Largest stock of Wreaths and Crosses in the Dominion.

Own Motor Hearse, Mourning Coaches and Carriages.

No ring on 'Phone 937, Wellington, is too early or too late.