

stake. The winner of any flat race after the declaration or weights to carry 7lb extra. Nomination 1sov, acceptance 1½sovs. Six furlongs. AUTUMN HANDICAP of 200sovs; second horse to receive 30sovs, and third 20sovs from the stake. The winner of any flat race after the declaration of weights to carry 7lb extra. Nomination 1sov, acceptance 3sovs. Once round.

SECOND DAY,

SATURDAY, MAY 6, 1916.

OHITI HACK HANDICAP HURDLE RACE of 100sovs; second horse to receive 15sovs, and third horse 10 sovs from the stake. Nomination 1sov, acceptance 1½sovs. One mile and three-quarters.

OKAWA HACK HANDICAP of 100sovs; second horse to receive 15sovs, and third 10sovs from the stake. To be ridden by apprentices who have not won more than five races. Nomination 1sov, acceptance 1½ sovs. Once round.

JUVENILE HANDICAP of 125sovs; second horse to receive 20sovs, and third 10sovs from the stake. For two-year-olds. Nomination 1sov, acceptance 2sovs. Five furlongs.

HAWKE'S BAY STAKES of 500sovs; second horse to receive 75sovs, and third 25sovs out of the stake. For two and three-year-olds. Weight for age. Winners after August 1 1915, of any race or races collectively of the value of 250sovs to carry 5lb extra; of 500sovs, 10lb; of 750sovs, 14lb; of 1000sovs, 18lb extra. Maiden three-year-olds at time of starting allowed 10lb, two-year-olds, 7lb. (Closed.) Six furlongs and a-half.

BURKE MEMORIAL STAKES of 400 sovs; second horse to receive 40 sovs, and third 20sovs from the stake. Nomination 1sov, acceptance 5sovs. One mile and a-quarter.

SCURRY HACK HANDICAP of 100 sovs; second horse to receive 10 sovs, and third 5sovs from the stake. The winner of any race after the declaration of weights to carry 7lb extra. Nomination 1sov, acceptance 1½sovs. Five furlongs.

MANGATARATA HANDICAP HURDLE RACE of 175sovs; second horse to receive 20sovs, and third 10sovs from the stake. Nomination 1sov, acceptance 3sovs. One mile and three-quarters.

FAREWELL HANDICAP of 200sovs; second horse to receive 30sovs, and third 20sovs from the stake. The winner of any race after the declaration of weights to carry 7lb extra. Nomination 1sov, acceptance 3sovs. Six furlongs.

DATES OF NOMINATIONS, WEIGHTS AND ACCEPTANCES. With amounts to be forwarded to the Secretary H.B.J.C.

AUTUMN MEETING, 1916. N.B.—All events close at 8 p.m., unless stated to the contrary.

FRIDAY, APRIL 14, GENERAL ENTRY. NOMINATIONS — Longlands Hack Hurdles, Nursery Handicap, Porangahau Handicap, Hawke's Bay Cup, Karamu Hurdles, Poukawa Hack Handicap, Autumn Handicap, Ohiti Hack Hurdles, Okawa Handicap, Juvenile Handicap, Burke Memorial, Scurry Hack Handicap, Mangatarata Hurdles and Farewell Handicap 1sov each.

ENTRANCE—Maiden Hack 2sovs. SWEEPSTAKE—Hawke's Bay Stakes 6sovs.

FRIDAY, APRIL 28. WEIGHTS—All Events First Day.

TUESDAY, MAY 2. ACCEPTANCES—Longlands Hack 1½ sovs, Nursery Handicap 3½sovs, Porangahau Handicap 4sovs, Hawke's Bay Cup 8sovs, Karamu Hurdles 3sovs, Poukawa Hack 1½sovs, Autumn Handicap 3sovs.

FRIDAY, MAY 5, (Night of First Day's Races.) WEIGHTS—All Events Second Day, by 8.30 p.m.

ACCEPTANCES (by 9.30 p.m.)—Ohiti Hack Hurdles and Okawa Hack Handicap 1½sovs each. Juvenile Handicap 2 sovs, Burke Memorial Stakes 5sovs, Scurry Hack and Mangatarata Hurdles 1½sovs each, Farewell Handicap 3sovs.

W. J. STRATTON, Secretary, Hastings. Telephone No. 85.

SADDLE AND HARNESS MAKER.

Trotting Boots, Booties, Hopples and Bloomers a Speciality.

F. KNIGHT.

JUST OPENED UP: A NEW LINE OF RACING HARNESS. ENGLISH AMERICAN AND COLONIAL LEATHER.

Shipment of American Sulkies Just Arriving. Estimates Given.

MANUKAU ROAD, FARNELL. Branch Establishment, NEWMARKET.

VETERINARY SURGEON.

J. JENSEN, HAWERA.

OPERATIONS OF ALL DESCRIPTIONS CARRIED OUT.

Horse and Cattle Medicines Supplied. Horse Infirmary at Egmont Stables. Telephone 62.

AUCKLAND TROTTING CLUB.

AUTUMN MEETING.

WEDNESDAY AND SATURDAY,

APRIL 5 AND 8, 1916.

OFFICERS:

Patrons: Hon. Major Harris, M.L.C., M. W. Armstrong, Esq., J.P., His Worship the Mayor. President: John Rowe, J.P. Vice-Presidents: J. G. Rutherford, Chas. Bailey, senr., Captain S. C. Caulton, J.P., A. R. Harris, J.P. Judge: R. B. Lusk. Handicapper: F. W. Edwards. Starter: C. O'Connor. Timekeepers: J. Cooke, F. W. Edwards, J. Williamson (Honorary). Clerk of Scales: F. W. Marks. Clerk of Course: T. Brown. Treasurer: C. Bailey. Auditors: Thomson and Gray. Pony Measurer: C. O'Connor. Stewards: E. F. Westbury, J. G. Rutherford, R. P. Kinloch, A. R. Harris, J.P., S. C. Caulton, J.P., G. S. Lintott, W. J. O'Dowd, C. Bailey, A. Donald, A. G. Mabee, B. Grayson, D. Wallace. Committee: J. Rowe, J.P., A. R. Harris, J.P., G. Tansley, L. Cooke, J. Hill, C. Bailey, senr., S. C. Caulton, J.P., J. G. Rutherford, T. Buxton, A. L. Coates, Jas. McColl, J. Morrison. Bankers: National Bank of New Zealand, Ltd. Secretary: C. F. Mark.

FIRST DAY.

WEDNESDAY, APRIL 5, 1916.

IMPROVERS' TROT HANDICAP (Saddle) of 75sovs; second horse to receive 10sovs, and third horse 5sovs each from the stake. FOR TROT- TING HORSES ONLY. For horses that have not won at better than 2.35 to the mile. Limit, 4.5. Nomination 20s., acceptance 30s. Distance, one mile and a-half.

MANGERE HANDICAP (Harness) 75 sovs; second horse to receive 10 sovs, and third horse 5sovs each from the stake. For horses that have not won at better than 2.30 to the mile. Limit, 3.58. Nomination 20s., acceptance 30s. Distance, one mile and a-half.

CAMPBELL HANDICAP (Harness) of 300sovs; second horse to receive 45 sovs, and third horse 20sovs each from the stake. Limit, 4.44. Nomination 2½sovs, acceptance 4sovs. Distance, two miles.

EASTER HANDICAP (Harness) of 150 sovs; second horse to receive 20 sovs, and third horse 10sovs each from the stake. Limit, 4.58. Nomination 20s., acceptance 3sovs. Distance, two miles.

HOBSON HANDICAP (Harness) of 100 sovs; second horse to receive 10 sovs, and third horse 5sovs each from the stake. Limit, 3.40. Nomination 1sov, acceptance 2sovs. Distance, one mile and a-half.

STEWARDS' TROT HANDICAP (Harness) of 150sovs; second horse to receive 20sovs, and third horse 10 sovs each from the stake. FOR TROT- TING HORSES ONLY. Limit, 3.45. Nomination 1sov, acceptance 3sovs. Distance, one mile and a-half.

CORNWALL HANDICAP (Harness) of 200sovs; second horse to receive 30 sovs, and third horse 15sovs each from the stake. Limit, 2.20. Nomination 2sovs, acceptance 2½sovs. Distance, one mile.

MARCONI HANDICAP (Saddle) of 100 sovs; second horse to receive 10 sovs, and third horse 5sovs each from the stake. Limit, 2.26. Nomination 1sov, acceptance 2sovs. Distance, one mile.

SECOND DAY.

SATURDAY, APRIL 8, 1916.

BARN HANDICAP TROT (Harness) of 30sovs; second horse to receive 10 sovs, and third horse 5sovs each from the stake. For horses that have not won at better than 2.35 to the mile. Limit, 4.5. FOR TROT- TING HORSES ONLY. Nomination 20s., acceptance 30s. Distance, one mile and a-half.

MANUKAU HANDICAP (Saddle) of 75sovs; second horse to receive 10 sovs, and third horse 5sovs each from the stake. For horses that have not won at better than 2.30 to the mile. Limit, 3.58. Nomination 20s., acceptance 30s. Distance, one mile and a-half.

LIVERPOOL HANDICAP (Harness) of 250sovs; second horse to receive 35 sovs, and third horse 15sovs each from the stake. Limit, 4.44. Nomination 2sovs, acceptance 4sovs. Distance, two miles.

AUTUMN HANDICAP (Harness) of 150 sovs; second horse to receive 20 sovs, and third horse 10sovs each from the stake. Limit, 4.58. Nomination 1sov, acceptance 3sovs. Distance, two miles.

ADAMS MEMORIAL HANDICAP (Harness) of 150sovs; second horse to receive 20sovs, and third horse 10 sovs each from the stake. Limit, 3.40. Nomination 1sov, acceptance 3sovs. Distance, one mile and a-half.

HILL TROT HANDICAP (Harness) of 150sovs; second horse to receive 20 sovs, and third horse 10sovs each from the stake. FOR TROT- TING HORSES ONLY. Limit, 5.0. Nomination 1sov, acceptance 3sovs. Distance, two miles.

MEMBERS' HANDICAP (Harness) of 200sovs; second horse to receive 30 sovs, and third horse 15sovs each from the stake. Limit, 2.58. Nomination 2sovs, acceptance 2½sovs. Distance, one mile and a-quarter.

FAREWELL HANDICAP (Saddle) of 125sovs; second horse to receive 15 sovs, and third horse 10sovs each from the stake. Limit, 2.26. Nomination 1sov, acceptance 2½sovs. Distance, one mile.

AUTUMN MEETING, 1916.

DATES OF NOMINATIONS, ACCEPTANCES AND HANDICAPS.

NOMINATIONS for all events close on FRIDAY, MARCH 24, at 9 p.m. ACCEPTANCES for the First Day close on FRIDAY, MARCH 31, at 9 p.m. ACCEPTANCES for the Second Day close on THURSDAY, APRIL 6, at 9 p.m.

HANDICAPS for the First Day to appear on MARCH 27.

HANDICAPS for the Second Day to appear on APRIL 6.

RULES AND REGULATIONS.

No nominations will be accepted unless accompanied by fees.

No competitor will be allowed to start unless all fees are paid.

No competitor will be allowed to start unless colours, dress and gear are in good order and condition.

No horse will be allowed to compete in hopples in races for trotters only.

Rule 172 New Zealand Rules of Trotting—By the entry of or endeavouring to enter a horse, every person having or subsequently acquiring any interest in such horse, shall be deemed to accept all the conditions and restrictions imposed or implied by these Rules, and to be barred from questioning the action of the Club or other body holding a sports meeting or any official of the Club or such other body in respect of such horses, or of any person connected therewith otherwise than is provided for in Part XXX of the Rules.

Placed horses on any day may be entered for shorter limit races on any succeeding day of the same meeting. Such entry must be made before 7 p.m. on the day on which the horse was placed except in the case of the third day of the Summer Meeting, for which such additional entry must be made before 7 p.m. on the second day of the meeting.

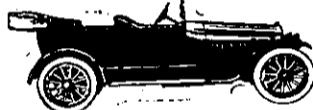
The Committee reserve the right to refuse any entry and to exclude any person or persons from the ground without giving any explanation.

Before any horse can start the Provident Fund fee of 5s. must be paid, under a penalty of disqualification, vide Rules of Trotting.

All Entries and Acceptances to be addressed to the Secretary, Durham Street, Auckland.

C. F. MARK, Secretary.

OCCIDENTAL MOTOR SERVICE, WELLINGTON.



ABSOLUTELY MOST RELIABLE TAXI SERVICE IN WELLINGTON.

Tours to all parts of the District.

Careful and Experienced Drivers.

ALL TRAINS AND STEAMERS MET

Telegrams— FITZGERALD MOTORS, WELLINGTON.

Telephones—Day, 1147; Night, 2040.

A Toast "The King's Health!"



Honored in the "Healthiest of Beverages —

STRACHAN'S KAKA ALE

"THE KING OF 'EM ALL!"

Brewed by W. STRACHAN & CO. DUNEDIN

"CLEAR TO THE LAST DROP"

ESTABLISHED 1888.

Alfred Buckland & Sons, Live Stock Salesmen.

LAND and ESTATE AGENTS. WOOL, GRAIN, and PRODUCE BROKERS.

The Haymarket, ALBERT ST., AUCKLAND

THE GREAT BRITISH RHEUMATIC REMEDY

BLAIR'S GOUT

AND RHEUMATIC PILLS.

The famous remedy that actually Believes and Cures LUMBAGO, RHEUMATISM, GOUT, SCIATICA, Purely Vegetable. Sure and Safe. Sold by all Drug Stores. English Price, 1/- and 2/6 per Box. Prout and Co., 229, Strand, London, England.

FIVE FIRST-CLASS TABLES. CENTRAL BILLIARD PARLOUR.

246, LAMBTON QUAY, WELLINGTON.

MR. DAVE FILLER has taken over the above and extends a Hearty Welcome to the Best and Most Popular Room in the City. The Sports' Rendezvous of Wellington. Every Civility and Attention.

J. O'BRIEN & CO., Carrying Contractors, Customs and Forwarding Agents, WELLINGTON, have removed their Offices to 8, Victoria Street, next to Commercial Travellers' Club.

Stock in Transit handled as usual at Horse Bazaar, Dixon Street.

Postal Address: Box 383. Phones: Office, 1920; Stables, 610.

NEW ZEALAND SPORTS PROTECTION LEAGUE.

JOIN THE LEAGUE to prevent undue interference with all reasonable recreations.

JOIN THE LEAGUE and discourage malpractices in connection with Sport.

JOIN THE LEAGUE and promote the legitimate development of all classes of sport and athletics.

JOIN THE LEAGUE to make it financially and numerically strong.

SUBSCRIPTION, 2s. 6d., entitles Member to Silver Badge, on application to the Secretary.

BOARD OF CONTROL: Sir George Clifford, Bart., President. C. P. Skerrett, Esq., K.C., Chairman. Ian G. Duncan, Esq., Treasurer. Hon. Dr. Collins, M.L.C. J. H. B. Coates, Esq. C. W. Tringham, Esq. R. W. SHALLCRASS, General Secretary. Harcourt's Buildings, Wellington.