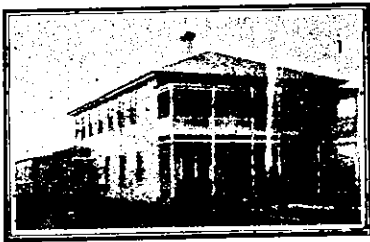


THE TOURIST AND TRAVELLER. WHERE TO STAY AND WHERE TO GO.

HAVELOCK.

COMMERCIAL HOTEL,
HAVELOCK.
C. G. RHIMES Proprietor.
MR. RHIMES wishes to remind his many friends that he is in possession of this well-known house of call. A hearty welcome to all. An ideal spot for a holiday. Best Marlborough Ales on tap.

HELENSVILLE.



HOT SPRINGS, HELENSVILLE.

MRS. G. S. NIELD Proprietress.
New, Modern Residence, well appointed with perfect sanitary arrangements. Roomy, large and well ventilated. Particular attention to Cuisine and Attendance. Terms 7s. per day; £2 per week. MINERAL BATHS ON PREMISES—FREE TO BOARDERS. Motor car meets all trains. 'Phone No. 47.

"PARAKAI" PRIVATE HOTEL.

40 ROOMS.

HOT SPRINGS, HELENSVILLE.

The most Up-to-date Private Hotel North of Auckland. Every possible convenience, and only one minute from "The Springs."
'Bus meets Express and Mid-day train at Helensville.

TERMS MODERATE.

Telephone No. 25 (Helensville Bureau).

MRS. E. LITTLE Proprietress.
(Late of Taranaki).

THE HOT SPRINGS PRIVATE HOTEL.
PARAKI, HELENSVILLE.

(Opposite the Baths.)

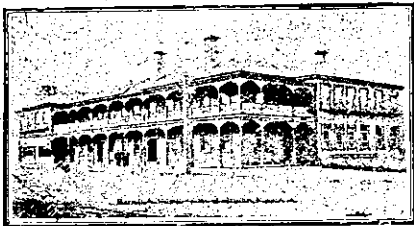
Every Comfort. Recently Enlarged and Renovated.

Tariff: 5s. per diem, 30s. per week. Letters and Telegrams attended to.

'Bus meets trains.

MRS. GOAD Proprietress.

HAMILTON.



HAMILTON HOTEL.

HAMILTON.

P. S. RYAN Proprietor.
This Commodious and Up-to-date Hotel is replete with every modern convenience for the comfort of Visitors. The Cuisine is First-class. Tariff Moderate.
ONLY THE BEST OF LIQUORS KEPT IN STOCK.



THE GRAND CENTRAL PRIVATE HOTEL.

HOOD STREET, HAMILTON.

This Hotel has been erected with a view for the Comfort of the Travelling Public. Every Modern Convenience. Electric Light. Hot and Cold Water. Perfect Sanitary Arrangements. Central to Post Office, Baths and River. Everything of the Very Best. Luxuriously Furnished. Smoking, Commercial and Writing Rooms. Travellers and Motorists Catered for.
Telegrams: "Central." 'Phone 567.

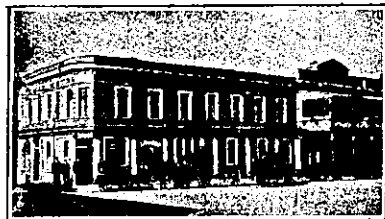
MRS. K. DANAHER .. Proprietress.

HAKATARAMEA.

TERMINUS HOTEL.

HAKATARAMEA.
Recently renovated and refurnished throughout, is now one of the finest houses in the district. Everything possible will be done to ensure the comfort of guests. Moderate Tariff.
Excellent Accommodation.
CHOICEST BRANDS OF LIQUORS.
J. BOYLE Proprietor.

HOKITIKA.



KELLER'S HOTEL.

HOKITIKA.
W. KELLER Proprietor.
FIRST-CLASS ACCOMMODATION FOR THE TRAVELLING PUBLIC.
ONLY BEST BRANDS OF WINES AND SPIRITS KEPT.

DOWELL'S

MOTOR GARAGE, LIVERY AND BAIT STABLES,
HOKITIKA.

Under the Patronage of His Excellency the Governor.

MOTOR CARS AND VEHICLES OF EVERY DESCRIPTION FOR HIRE AT THE SHORTEST NOTICE.

Trips arranged to all the Tourist haunts of Westland, Franz Josef Glacier included.

Careful drivers, reliable cars, comfortable traps, and a complete knowledge of every nook and corner of the Coast. Telegrams and letters receive prompt attention.



RAILWAY HOTEL.

HOKITIKA.
First House from Railway Station. Good Accommodation for the Travelling Public at moderate rates. The Railway Hotel is the most convenient for travellers of all classes, being practically at the Station gates. The accommodation is good, and every comfort of guests is studied.

HENRY JONES Proprietor.

HUNTERVILLE.

ARGYLE HOTEL.

HUNTERVILLE.
The above well-known and popular Hotel has been recently renovated and refurnished throughout and is now the most comfortable in the district. Commercially well and this Hotel second to none. Telegrams and letters promptly attended to.
WILLIAM TRAILL Proprietor.

HUNTLY.

HUNTLY HOTEL.

HUNTLY.
This Hotel is now one of the largest in the Waikato. All trains stop at Huntly, and the Hotel is a few yards from the Station. First-class Accommodation and Excellent Table.

L. B. HARRIS Proprietor.

INANGAHUA.

ALBORN'S HOTEL,

INANGAHUA JUNCTION.
Principal stopping place between Reefton, Nelson and Westport. Travellers and Motorists Catered for in a Capital Manner.
WINES, SPIRITS AND ALES OF THE VERY BEST.
V. ALBORN Proprietor.

INVERCARGILL.

GRAND HOTEL.

INVERCARGILL.

The Proprietors of the "New Zealand Sporting and Dramatic Review" can, from personal experience, recommend the GRAND HOTEL, Invercargill, to all of its readers.

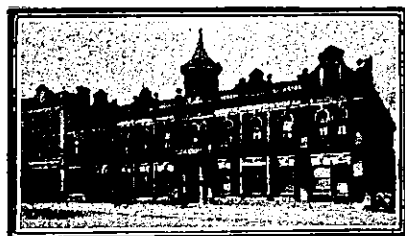
GEO. HEALE Proprietor.

Do not drink German or Prussian Mineral Waters.

WAI-RONGOA Natural Mineral Water

Is bottled fifteen miles from Dunedin, away from the dirt and dust of the city, where the air is pure and uncontaminated. It has been introduced at the request of New Zealand's leading members of the medical profession.

Every Bottle is Guaranteed Bottled Direct from the Spring, and is Charged with its own Natural Gas.



Where to Stay in Invercargill—The RAILWAY PRIVATE HOTEL

The Favourite and Most Popular Hotel. Opposite Railway Station, Invercargill. Patrons called in time to catch early trains. Early breakfast a specialty. Tourists' favourite house. Ladies' Private Sitting Rooms. Favourite house with Commercial Travellers. Travelling Public and Theatrical Profession. Tariff moderate. Electric light. Telephone 503. P.O. Box 222.
P. J. BELLETT Proprietor.

INGLEWOOD.

INGLEWOOD HOTEL.

INGLEWOOD.
A. LAING Proprietor.
(Late of Woodville.)
FIRST-CLASS ACCOMMODATION FOR THE TRAVELLING PUBLIC.
WINES AND SPIRITS OF THE BEST BRANDS ONLY.

KAIKOURA.

WHERE TO STAY IN KAIKOURA, Why the

ADELPHI HOTEL.

The most popular House in the Town. Everything of the Very Best, including Stabling and Coaching.

GEO. SHIELDS Proprietor.
(Late of Albion Hotel, Lyttelton.)

KAWAKAWA.

STAR HOTEL,

KAWAKAWA.
EXCELLENT ACCOMMODATION FOR TRAVELLERS.
CLOSE TO RAILWAY STATION. LIQUORS THE BEST.
J. F. WALL Proprietor.

JUNCTION HOTEL,

KAWAKAWA.
EXCELLENT ACCOMMODATION FOR THE TRAVELLING PUBLIC.
CHOICEST BRANDS OF LIQUORS IN STOCK.
W. A. BELL Proprietor.

KAIAPOI.

THE PIER HOTEL.

KAIAPOI.
MR. PIERCE POWER having taken over the above well-known House wishes to notify travellers and the public generally that everything possible will be done to ensure the comfort of guests. First-class accommodation. Excellent cuisine. Commercial house. Wine, ales, and spirits of the highest order.
PIERCE POWER Proprietor.

KUMARA.

RUGG'S KUMARA HOTEL.

Under Vice-Regal Patronage.
GORDON HARCOURT .. Proprietor.
This favourite Hotel is fitted throughout with all the modern requirements of a first-class house. The table is of the best, while the accommodation generally leaves nothing to be desired. Patrons are assured of every attention. Within 2min. walk of the Post and Telegraph Offices. Stabling and motor car accommodation. Excellent billiard table. Reasonable tariff.

KOROW.

RAILWAY HOTEL.

KUROW.
Close to Railway Station. The Favourite House with Commercial and Tourists. Every Attention. First-class Accommodation. Excellent Cuisine. Wine, Ales and Spirits of the Highest Order.
J. A. GREER Proprietor.

LAWRENCE.

RAILWAY HOTEL.

LAWRENCE.
MISSIS McCOLL ... Proprietress.
GOOD ACCOMMODATION AND TABLE AT A MODERATE TARIFF. Within 1min. walk of Railway Station. Good Stabling.

COMMERCIAL HOTEL.

LAWRENCE.
Under New Management. Tourists and Travellers can rely on getting every Comfort and Attention. First-class Accommodation. Excellent Cuisine.
J. W. ORAM Proprietor.

LUMSDEN.



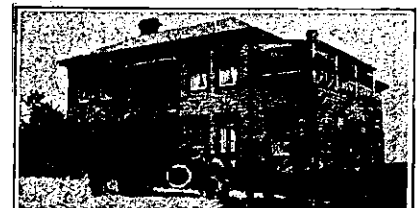
HOTEL ARCADIA.

OXFORD STREET, LEVIN. FIRST-CLASS ACCOMMODATION FOR VISITORS. SPECIAL TERMS TO BOARDERS. ALL MEALS ONE SHILLING. Telephone 28.
H. O. BARNETT Proprietor.

ELBOW HOTEL.

LUMSDEN.
SPLENDID ACCOMMODATION FOR TOURISTS AND TRAVELLERS. The Favourite House for Visitors to Lakes Te Anau and Manapouri. Good Stabling and Roomy Loose-boxes. THE LIQUORS OF THE HIGHEST QUALITY.
J. CLISBY Proprietor.
(Late of Cromwell.)

MAUNGATUROTO.



MAUNGATUROTO HOTEL.

MAUNGATUROTO.
MRS. E. E. HYLAND .. Proprietress.
The Hotel has recently been renovated and refurnished throughout and offers first-class Accommodation to Travellers. Only the best brands of Wine, Ales, Spirits, Etc., kept in stock.