

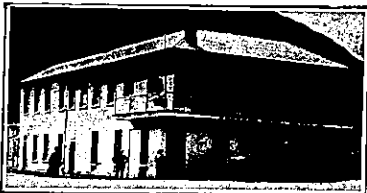
THE TOURIST AND TRAVELLER. WHERE TO STAY AND WHERE TO GO.

PAPAKURA.

GLOBE HOTEL.
PAPAKURA.
MRS. I. SMITH Proprietress.
The leading Commercial Hotel in the District. Excellent accommodation for Tourists, Travellers and Visitors. First-class table always kept. All meals 1s. 6d. Wines and Spirits of the Best quality. Popular Lion Ale on tap. Every attention and comfort. Afternoon tea for motoring parties a speciality. Good stabling and paddocks. Horses and traps for hire. Moderate tariff.

QUEENSTOWN.

GRAND VIEW
PRIVATE BOARDING ESTABLISHMENT, QUEENSTOWN.
Excellent Accommodation for Tourists. Occupying a position on the rise, it commands an uninterrupted view of the town, the Remarkables and the Lakes. Within 2min. of the wharf. Letters and telegrams receive prompt attention.
MISSIS POWELL ... Proprietress.



POST OFFICE HOTEL.
(Late Supreme Court),
QUEENSTOWN.
This Hotel has just been thoroughly renovated. Superior accommodation for families, visitors, and the travelling public. Moderate tariff. Letters and telegrams promptly attended to. Telephone 3. P.O. Box 46.
WILLIAM SCOTT Proprietor.

REEFTON.



DAWSON'S HOTEL.
REEFTON.
THE LEADING HOTEL IN REEFTON. WINES AND SPIRITS OF THE VERY BEST BRANDS.
JAMES S. VIAL Proprietor.

CRITERION HOTEL,
REEFTON.
T. KENNING Proprietor.
Loose Boxes Always Available.
Also adjoining **THEATRE ROYAL.** Available at all times for touring companies. Seating accommodation for 500. Correspondence invited. Excellent show town.

RIVERTON.

WHERE TO STAY IN RIVERTON.
RAILWAY HOTEL.
Directly Opposite Railway Station.
Ideal Hotel for a Holiday at the Seaside.
Everything of the very Best.
CHAS. DE CLIFFORD ... Proprietor.

THE BRIDGE
PRIVATE BOARDING ESTABLISHMENT, RIVERTON.
Excellent Accommodation for Tourists and Visitors. Splendid situation, overlooking the town, the Railway and the Estuary. Within five minutes' walk of Railway Station. Terms Moderate.
MRS. BLACK Proprietress.

ROXBURGH.

THE GOLDFIELDS HOTEL.
SCOTLAND STREET, ROXBURGH.
Adjacent to Public Hall, Tennis Court, Bowling Green, Golf Links. This luxuriously furnished Hotel is now completed and open for public patronage. Hot and cold plunge and shower baths. Ladies' sitting room. Acetylene gas, etc. All liquors of the highest order. Moderate Tariff.
EDITH WHITLAW Licensee.
(Late of Takapuna Hotel).

Under New Management.
GRAND HOTEL.
SCOTLAND ST., ROXBURGH.
M. SULLIVAN Proprietress.
Accommodation right up to the times. First-class table a speciality. Excellent beds. Only best brands of ales and liquors kept. Two full-sized billiard tables. Good stabling.

THE COMMERCIAL HOTEL.
ROXBURGH, CENTRAL OTAGO.
The starting place for Coaches between Alexandria and Lawrence.
EVERY COMFORT AND ATTENTION.
A. BALLANTINE Proprietor.

ROTORUA.

LAKE HOUSE HOTEL.
OHINEMUTU, ROTORUA.
This Hotel commands an imposing situation on the shores of Lake Rotorua. Mineral and Mud Baths in Hotel Grounds.
Free for guests, the mineral waters of which have highly curative and of which have highly curative and valuable properties. Excellent Cuisine. Electric light. Splendidly laid out grounds.

E. W. G. SMITH Proprietor.
(Late of Cambridge and Tirau).

THE GEYSER HOTEL.
ROTORUA.

Golf Links adjoin the Hotel. Situated at WHAKAREWAREWA, the amphitheatre of
SPOUT BATH.
Free to Guests. Famous for its extraordinary Cures of Rheumatism, Neuralgia, Lumbago, Sciatica, Kidney, Liver and other complaints.

Five minutes from Rotorua; 'Bus Free from Station to Hotel for Guests.
Tariff from 9s. per day.

ROX. WOODWARD Proprietor
(Late Grand and Palace Hotels, Rotorua, and Royal Hotel, Auckland).

C. W. CLARKE.
AERATED WATER MANUFACTURERS,
TUTANEKAI STREET, ROTORUA.
Home-brewed Stone Ginger Beer and Hop Beer a Specialty.
Ring up Phone 23.

STRATFORD.

STRATFORD HOTEL.
BROADWAY, STRATFORD.
(Opposite Newton King's Offices.)
This Hotel is now under new management, and is being thoroughly renovated. Liquors of the Best, and Speight's beer only drawn.
F. WHITTLE Proprietor.

EMPIRE HOTEL.
STRATFORD.
This well-known house of call has been taken over by MR. OSCAR ARDEN, well-known in sporting circles. A hearty welcome to all old and new friends. Speight's Beer on tap, and Wines and Spirits true to label. Tariff 6s. 6d. per day.

SOUTHLAND.

CROWN HOTEL.
OTAUTAU, SOUTHLAND.
M. O'BRIEN Proprietor.
EVERYTHING OF THE VERY BEST. Motor Cars for Hire, Tours Arranged to all Parts of the District. Horses and Traps for Hire. Excellent Stabling.

STEWART ISLAND.
FERNDALE HOUSE.
STEWART ISLAND.
The Leading House for Tourists and Travellers, situated on the rise overlooking Half Moon Bay, and close to Wharf. First-class Accommodation; Excellent Cuisine. Tariff 30/ per week.
MRS. C. HICKS Proprietress.

SANSON.
JUNCTION HOTEL.
SANSON.
MRS. Z. L. BUCKERIDGE, Proprietress.
(Formerly of Wairarapa, Wellington and Napier.)
Favourite stopping place for motorists between Wanganui and Wellington. Everything of the Very Best. A Hearty Welcome to all.

New Zealand's Brightest and Best Illustrated Paper.

The N.Z.
SPORTING AND DRAMATIC REVIEW.
PRICE 6d.—All Bookellers.

TAIHAPE.



GRETNA HOTEL.
TAIHAPE.
FIRST-CLASS ACCOMMODATION FOR TRAVELLERS.
EVERY COMFORT AND CONVENIENCE.
FIRST-CLASS TABLE D'HOTEL
WELL EQUIPPED COMMERCIAL ROOMS.
ALL LIQUORS OF THE BEST.
W. McLENNAN Proprietor.

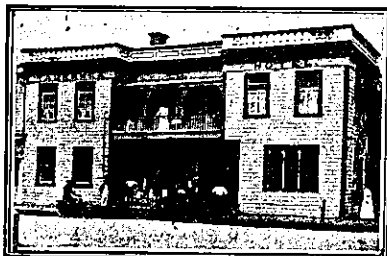
TURAKINA.

RAILWAY HOTEL.
TURAKINA.
IVAN MILLS Proprietor.
Passengers by train have ample time for refreshments.
Everything of the Very Best.
Wines, Spirits and Ales true to label.

TE KUITI.

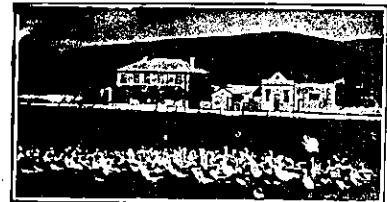
"RIVERSIDE"
PRIVATE HOTEL.
TE KUITI.
EXCELLENT ACCOMMODATION FOR VISITORS.
Electric Light. First-class Table. 25 Spacious Rooms.
RECENTLY ENLARGED AND RENOVATED.
Letters and Telegrams Attended To.
Tariff, 5s. 6d. per diem.
MRS. J. STEWART ... Proprietress.

TAURANGA.



TAURANGA HOTEL.
TAURANGA.
FIRST-CLASS CUISINE AND ATTENTION.
ALES, WINES AND SPIRITS OF GUARANTEED QUALITY.
Correspondence Promptly Attended to.
P.O. Box 37.
Telegraphic Address: "Tourist," Tauranga.
SAMUEL TANNER Proprietor.
(Late of Waihi).

TE AUTE.



TE AUTE HOTEL.
HALF-WAY BETWEEN WAIPAWA AND HASTINGS.
Best Wines and Spirits kept. Good table. Good Shooting and Fishing.
T. BURGESS Proprietor.

THAMES.

ROYAL HOTEL.
THAMES.
(Under New Management.)
FIRST-CLASS ACCOMMODATION.
UP-TO-DATE SERVICE.
HOT AND COLD BATHS.
TELEGRAMS PROMPTLY ATTENDED TO.
J. W. H. BRIGHT Proprietor.
Late of Hamilton and Waikato Hotels.

PACIFIC HOTEL.

THAMES.
This Hotel offers Special Facilities to Commercial Travellers and Visitors, being Convenient to Steamer and Train.
SPLENDIDLY APPOINTED.
WINES, BEERS, AND SPIRITS OF THE VERY BEST.
FIRST-CLASS TABLE.
Letters and Telegrams Promptly attended to.
R. E. PRICE Proprietor.

"Caed Mills Faihthe."
SHORTLAND HOTEL.
THAMES.
Three minutes from train and Shortland Wharf. First-class Accommodation; Excellent Table. All Liquors Fresh as the latest news. C. and M. Ale on Draught.
W. CANNER Proprietor.
Phone 145.

SALUTATION HOTEL.
MARY STREET, THAMES.
HARRY BROWNLEE, Proprietor.
Only SPEIGHT'S ALE on Draught.
Best Ale in Town.

POST OFFICE HOTEL.
MARY STREET, THAMES.
Visitors will find here excellent accommodation, and the very Best Wines, Spirits, and Ales.
MRS. W. MORRISON .. Proprietress.

TAUPIRI.
TAUPIRI HOTEL.
TAUPIRI.
SPLENDID ACCOMMODATION. CLOSE TO RAILWAY STATION. THE VERY BEST LIQUORS IN STOCK.
S. KEOGH Proprietor.

TIMARU.

SEA VIEW HOUSE.
(Private) TIMARU.
Four minutes from Post Office. Overlooking Caroline Bay. 35 rooms, including Billiard and Smoke Rooms. Hot and Cold Baths. Promenade roof with commanding view. Excellent Cuisine. Tariff Moderate. Phone 394.
MRS. HYMAN Proprietress.


CROWN HOTEL.
TIMARU.
EXCELLENT ACCOMMODATION AND ATTENTION.
Central Location. Handy to Caroline Bay, Theatres, Wharf and Railway. Nothing but the Best in the Bar.
R. BERTI Proprietor.

THE DOMINION HOTEL.
TIMARU.
The most modern and up-to-date Hotel in Timaru, overlooking Caroline Bay and the Harbour. Everything new inside and out. Absolutely fireproof. Electric light, and replete with every convenience. Bath-rooms, hot and cold water on every floor. Moderate Tariff.
JOHN REILLY Proprietor.

W. QUIRKE
(Late of the Crown and Royal Hotels). Has taken over the well-known and favourite
EXCELSIOR HOTEL.
TIMARU.
Friends will find the Wines, Ales, and Cuisine up to the standard that has been identified with his previous hostilities.

CITY BOARDING HOUSE.
Corner CHURCH AND SOPHIA STS., TIMARU.
Conducted on up-to-date lines. Every comfort and attention. First-class meal 1s. Special accommodation for holiday visitors.
J. J. DREW Proprietor.

READ THE NEW ZEALAND MOTOR AND CYCLE JOURNAL
For Latest Motoring News.