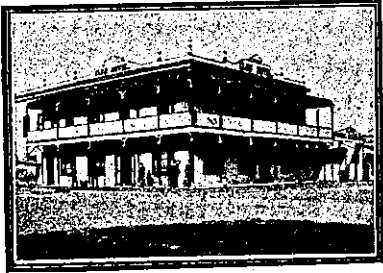


THE TOURIST AND TRAVELLER. WHERE TO STAY AND WHERE TO GO.

MARTINBOROUGH.



CLUB HOTEL.
MARTINBOROUGH.

This recognised Best Hostelry in Martinborough has been taken over by MR. C. J. NELSON, formerly of the Wakatu Hotel, Nelson, and the Masonic Hotel, Waitara. Excellent Accommodation for Travellers. First-class Cuisine Everything of the Very Best. All Wines and Spirits true to label.
C. J. NELSON Proprietor.

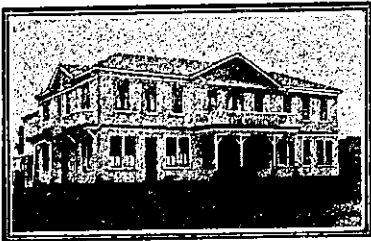
MURCHISON.

DOWNIE'S HOTEL,
MURCHISON.

A. E. SNOWDEN Proprietor.

This well-known and popular hostelry has been taken over by MR. SNOWDEN, who extends to all his many friends the comfort of a home away from home. THE FAVOURITE STOPPING PLACE FOR TRAVELLERS. EVERYTHING OF THE VERY BEST.

A. E. SNOWDEN Proprietor.



COMMERCIAL HOTEL,
MURCHISON.

PETER GAMBONI Proprietor. This Well-known House of Call on the Nelson-West Coast Road has been taken over by Mr. Gamboni, formerly of the Panama Hotel, Nelson. The recognised Hostelry for Motorists and Travellers. Every Civility and Attention to All. Wines, Spirits and Ales of the Very Best.

MOTUEKA.

THE NEW POST OFFICE HOTEL,
MOTUEKA.

H. G. HOULDSWORTH, Proprietor. The most central position in the town. The most up-to-date Hotel in the Nelson Province. Every convenience for the Travelling Public. Electric light throughout. Tourists will find it a pleasure to stay here. Fishing and Shooting Parties arranged. Special conveyance to and from wharf. Cuisine par excellence. Cozy Sitting-rooms for Ladies. Large, comfortable and convenient Commercial Rooms. Attention prompt and reliable. An ideal hostel for travellers. Billiard Room, Sample Rooms. Wines and Spirits of the Best. P.O. Box No. 11. Telephone No. 11

THE MOTUEKA HOTEL,
HIGH STREET, MOTUEKA.

C. ALLINGTON Proprietor. Letters and telegrams receive prompt attention. First-class Billiard table. Arrangements made for parties to be driven to all parts of the district. Cabs meet all steamers.

MANGATAINOKA.

DUDLEY ARMS HOTEL,
MANGATAINOKA.

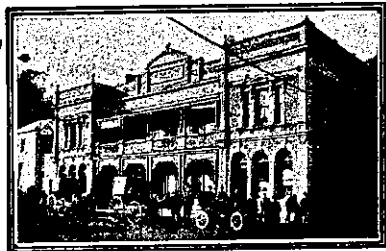
The only Hotel in the township and right opp. Railway Station. "SANDY" BEID, late Cordial Manufacturer, Wellington, has taken over this Popular house of call. A Hearty Welcome to all. A Home Away from Home.

NAPIER.



CALEDONIAN HOTEL,
NAPIER.

Now under the Proprietorship of FRANK RHODES, late of the Empire Hotel, Timaru. Five minutes Post Office and Station. Accommodation for 100 guests. Excellent Cuisine. Moderate Tariff. Telegrams - "Rhodes, Caledonian, Napier."



PROVINCIAL HOTEL,
CLIVE SQUARE, NAPIER.

This well-known House, which is situated in close proximity to the Napier Railway Station, has been taken over by Mr. R. K. Griffin, well known in Auckland contracting circles.

Wines and Spirits of the Very Best. Correspondence promptly attended to.
R. K. GRIFFIN Proprietor.

TERMINUS HOTEL,
NAPIER.

An ideal House for Travellers, adjoining Railway Station. First-class Accommodation. Moderate Tariff. Liquors absolutely true to label.
G. F. BONNAR Proprietor.

CLARENDON HOTEL,
Opposite Post Office, NAPIER.

BEST OF SPIRITS AND WINES. SPEIGHT'S BEER. GOOD ACCOMMODATION.
H. T. HANLON Proprietor.

NELSON.

EXCHANGE HOTEL,
NELSON.

R. (BOB) T. BLAND. Extensive alterations have been made in the interior of this OLD ESTABLISHED HOSTELRY, and Patrons will find the New Bar second to none in the City for comfort and convenience. A CALL SOLICITED. NONE BUT THE BEST OF LIQUORS.

WAKATU HOTEL,
NELSON.

MR E. (TED) J. WINTER, Proprietor, Has much pleasure in informing old friends that he has taken over the above well-known Hotel. Visitors to Nelson can secure excellent accommodation at a Moderate Tariff. A home away from home. Seats booked here for motor car for Motueka and Takaka.

GAY'S CITY LIVERY STABLES,
NELSON.

Carriages as supplied to His Excellency Lord Islington. Commercial buggies, gigs, and vehicles of all description on hire. Motor Cars for Hire Established 1866. Phone 60.
H. GAY Manager.

RAILWAY HOTEL,
RICHMOND, NELSON.

C. KNIGHT Proprietor. Opposite Railway Station gate, 5 min. walk from Show Grounds and Racecourse. Good accommodation. Motor tourists will receive every attention, also supplied with petrol at ordinary rates. Also good stable and loose box accommodation for horses. Phone No. 5.

PANAMA HOTEL,
NELSON.

C. H. SATHERLEY Proprietor. (Late of Pelaros Hotel, Canvastown). WINES, SPIRITS AND ALES OF THE VERY BEST. FIRST-CLASS ACCOMMODATION.

VISITORS TO NELSON. STAY AT

THE MASONIC HOTEL.

J. P. BEIRNE Proprietor. (Late of the Grosvenor Hotel, Bleenheim, and Oxley's Hotel, Picton). Has taken over the MASONIC, Nelson's Leading Hotel, and visitors to the "City of Sunshine" are assured of first-class treatment at this well-known establishment.

ACCOMMODATION SECOND TO NONE. ONLY BEST BRANDS OF LIQUORS SOLD.

PROVINCIAL HOTEL,
BRIDGE STREET, NELSON.

(Opp. Queen's Gardens and Government Buildings.) Hot and cold water laid on. The above Hostelry is now under new management and is being conducted by MR. J. D. MORLAERTY, well known in Westport and Greymouth. A hearty welcome to all old and new friends. Harley's Prize Ales on draught. Moderate Tariff. Telephone 236.

NGARUAWAHIA.

WAIPA HOTEL,
NGARUAWAHIA.

A first-class up-to-date Hotel, bordering on the banks of the Waikato River famous for trout fishing. All information given to anglers. Fine duck-shooting in season. Wines and spirits of the best. First-class table. Telegrams promptly attended to.
E. A. SMITH Proprietor.

NEW PLYMOUTH.

CRITERION HOTEL.



NEW PLYMOUTH.

Being centrally situated is unequalled for Tourists and Commercial Gentlemen. The table is maintained at a uniform standard of excellence, and visitors can be certain of obtaining the Best Menu in New Plymouth. Hot and Cold Baths always available. Sanitary appointments are well up to date. Night porter in attendance.
J. McKEAN Proprietor. P.O. Box 21. Phone No. 30.

GROSVENOR HOTEL,
NEW PLYMOUTH.

The above Hotel is directly opposite Railway Station, and overlooks the sea, and offers First-class Accommodation to the Travelling Public. TARIFF 6s. 6d. PER DAY.
CHAS. A. HARRISON ... Proprietor.

ONEHUNGA.

HIBERNIAN HOTEL,
QUEEN STREET, ONEHUNGA.

FIRST-CLASS ACCOMMODATION. Only Best Wines and Spirits Stocked. Tariff, 6s. 6d. per day.
MRS. H. DINGLE Proprietress.

OAMARU.

YOUR LUGGAGE removed from Station, Hotel, anywhere, carefully and with despatch.

ERNEST R. SPEID,

Carrier. Phone 363, or Star and Garter Hotel, Box 31. Letters and Telegrams receive prompt attention.

Visitors to OAMARU can Obtain Excellent Fish Suppers at G. W. TODD'S LUNCHEON ROOMS, THAMES STREET, OAMARU.

IMPERIAL HOTEL,
NEW PLYMOUTH.

CHAS. POTTS Proprietor. (Formerly of the Star Hotel, Tauranga, and Coronation Hotel, Eltham.) All old and new friends welcome. Every comfort and modern convenience. Excellent Cuisine. Only Best Liquors Stocked.

WHERE TO STAY IN NEW PLYMOUTH.

WHITE HART HOTEL,
NEW PLYMOUTH, N.Z.

LEADING COMMERCIAL AND TOURIST HOUSE.
H. S. BROOKMAN Proprietor.

OTAHUHU.



CRITERION HOTEL,
OTAHUHU.

Good Accommodation for the Travelling Public. Only the Best Brands of Wines, Ales, Spirits, etc., kept in Stock. SECCOMBE'S DRAUGHT ALES.
W. J. WILLIAMS Proprietor.

STAR HOTEL,

OTAHUHU. THIS FINE HOTEL HAS JUST BEEN RENOVATED AND FITTED WITH EVERY MODERN CONVENIENCE. FIRST-CLASS ACCOMMODATION FOR THE TRAVELLING PUBLIC.

ONLY THE BEST OF LIQUORS STOCKED.
MRS. McMANUS Proprietress.

OHAEAWAI.

OHAEAWAI HOTEL,
OHAEAWAI. FIRST-CLASS ACCOMMODATION. Commercial Room, Private Sitting Rooms, Bath Room, Etc. Good Stabling and Paddocking. Billiards.
W. MAY Proprietor.

OTAKI.

CENTRAL HOTEL,
OTAKI. GEO. TULLOCH Proprietor. BEST WINES AND SPIRITS. EVERY COMFORT FOR THE TRAVELLING PUBLIC.

WEST OXFORD.

COMMERCIAL HOTEL,
WEST OXFORD. The Favourite Commercial House in the District. Recently renovated and refurbished throughout. First-class Accommodation. Excellent Cuisine.
F. W. GLASSON Proprietor.

PICTON.

OXLEY'S HOTEL,
CORNER LONDON QUAY AND WELLINGTON STREET, PICTON. MRS. E. C. HIGGINS, Proprietress...

This well-known, popular and up-to-date Hotel has been entirely renovated, and being fitted with every modern convenience, is specially suited to the requirements of the travelling public. Situated as it is with a commanding view of the beautiful Queen Charlotte Sound, OXLEY'S HOTEL is an ideal House for holiday-makers and tourists. Motor Cars and Motor Boats always at the disposal of our boarders. Tariff reasonable, and comfort guaranteed. First-class table always kept, and only the very best Liquors dispensed. Electric light installation throughout. Hot and cold shower baths. The billiard room is in charge of an experienced marker. Telephone No. 1

PALMERSTON NORTH.

THE CLUB HOTEL,
PALMERSTON NORTH. Stands on two acres of land; frontage 165ft.; promenade balcony; contains 60 bedrooms, and private sitting-rooms, and 12 sample rooms. The appointed house for the Association of N.Z. and Australian Commercial Travellers.
H. B. TUCKER, Proprietor and Owner.

OCCIDENTAL HOTEL,
PALMERSTON NORTH.

CAPTAIN J. MITCHELL, Proprietor. (Late of Dominion Hotel, Hawera.) This well-known Hotel, with the clock in the roof, has been taken over by MR. MITCHELL, who extends a hearty welcome to all old and new friends. Everything of the very best.

THE SPORTS' HOTEL,
CENTRAL HOTEL,
PALMERSTON NORTH.

JAS. CRESS Proprietor. MR. JAMES CRESS, formerly of Masterton and Trentham, has taken over the above Hotel. Everybody Welcome.

PAHIATUA.

COMMERCIAL HOTEL,
PAHIATUA. MR. (TED) SULLIVAN wishes his old friends and the Travelling Public to know that he is now in the above well-known House. Everything of the Best.
TED SULLIVAN Proprietor.

PATEA.

MASONIC HOTEL,
PATEA. The Hotel has been recently renovated and refurbished throughout and offers First-class Accommodation to Travellers. TARIFF 7s. PER DAY.
E. SMITH Proprietor.

THE ALBION HOTEL,
PATEA. FIRST-CLASS ACCOMMODATION FOR TOURISTS, FAMILIES AND TRAVELLERS.

WINES, ALES AND SPIRITS OF THE BEST. J. A. COOGAN Proprietor.

PAPAKURA. PAPAKURA HOTEL,
PAPAKURA.

The leading Commercial Hotel in the District. Excellent accommodation for Visitors, Travellers and Tourists. First-class Table. Wines and Spirits of the Best quality. Afternoon Tea for Motoring Parties a Specialty. Good Stabling and Paddocks. Horses and Traps for Hire. Tariff Moderate.
C. WATERMAN Proprietor.