

# THE TOURIST AND TRAVELLER. WHERE TO STAY AND WHERE TO GO.

## PAHI HOTEL, PAHI.

FIRST-CLASS ACCOMMODATION  
FOR TRAVELLERS.

BEST BRANDS WINES, SPIRITS,  
ALES, ETC.

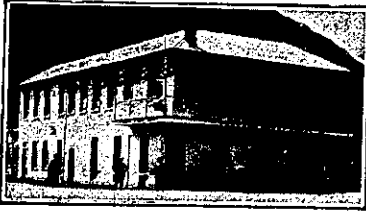
J. RYAN ..... Proprietor.

## QUEENSTOWN. GRAND VIEW

PRIVATE BOARDING ESTABLISH-  
MENT, QUEENSTOWN.

Excellent Accommodation for Tour-  
ists. Occupying a position on the rise,  
it commands an uninterrupted view of  
the town, the Remarkables and the  
Lakes. Within 2min. of the wharf.  
Letters and telegrams receive prompt  
attention.

MISSES POWELL ... Proprietresses.

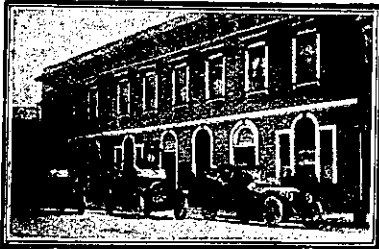


## POST OFFICE HOTEL, (Late Supreme Court), QUEENSTOWN.

This Hotel has just been thoroughly  
renovated. Superior accommodation for  
families, visitors, and the travelling  
public. Moderate tariff. Letters and  
telegrams promptly attended to. Tele-  
phone 3. P.O. Box 46.

WILLIAM SCOTT ..... Proprietor.

## REEFTON.



## DAWSON'S HOTEL, REEFTON.

THE LEADING HOTEL IN REEF-  
TON. WINES AND SPIRITS OF THE  
VERY BEST BRANDS.

JAMES S. VIAL ..... Proprietor.

## CRITERION HOTEL, REEFTON

T. KENNING ..... Proprietor.  
Loose Boxes Always Available.

Also adjoining THEATRE ROYAL.  
Available at all times for touring com-  
panies. Seating accommodation for 500.  
Correspondence invited. Excellent show  
town.

## RIVERTON.

WHERE TO STAY IN RIVERTON.

## RAILWAY HOTEL, Directly Opposite Railway Station.

Ideal Hotel for a Holiday at the  
Seaside. Everything of the very Best.

CHAS. DE CLIFFORD ... Proprietor.

## THE BRIDGE

PRIVATE BOARDING ESTABLISH-  
MENT, RIVERTON.

Excellent Accommodation for Tour-  
ists and Visitors. Splendid situation,  
overlooking the town, the Railway and  
the Estuary. Within five minutes' walk  
of Railway Station. Terms Moderate.

MRS. BLACK ..... Proprietress.

## ROXBURGH.

THE GOLDFIELDS HOTEL,  
SCOTLAND STREET, ROXBURGH.

Adjacent to Public Hall, Tennis  
Court, Bowling Green, Golf Links.  
This luxuriously furnished Hotel is  
now completed and open for public  
patronage. Hot and cold plunge and  
shower baths. Ladies' sitting room.  
Acetylene gas, etc. All liquors of the  
highest order. Moderate Tariff.

EDITH WHITLAW ..... Licensee.  
(Late of Takapuna Hotel).

Under New Management.

## GRAND HOTEL, SCOTLAND ST., ROXBURGH.

M. SULLIVAN ..... Proprietress.

Accommodation right up to the times.  
First-class table a specialty. Excel-  
lent beds. Only best brands of ales  
and liquors kept. Two full-sized bil-  
liard tables. Good stabling.

## THE COMMERCIAL HOTEL, ROXBURGH, CENTRAL OTAGO.

The starting place for Coaches be-  
tween Alexandria and Lawrence.

EVERY COMFORT AND ATTENTION.

A. BALLANTINE ..... Proprietor.

## N.Z. SPORTING & DRAMATIC REVIEW.

PRICE 6d. ALL BOOKSELLERS.

## ROTORUA.

## LAKE HOUSE HOTEL, OHINEMUTU, ROTORUA.

This Hotel commands an imposing  
situation on the shores of Lake Roto-  
rua. Mineral and Mud Baths in Hotel  
Grounds.

Free for guests, the mineral waters  
of which have highly curative and  
of which have highly curative and  
valuable properties. Excellent Cui-  
sine. Electric light. Splendidly laid  
out grounds.

E. W. G. SMITH ..... Proprietor.  
(Late of Cambridge and Tirau).

## THE GEYSER HOTEL, ROTORUA.

Golf Links adjoin the Hotel.

Situated at WHAKAREWAREWA,  
the amphitheatre of

## SPOUT BATH.

Free to Guests. Famous for its extra-  
ordinary Cures of Rheumatism, Neu-  
ralgia, Lumbago, Sciatica, Kidney,  
Liver and other complaints.

Five minutes from Rotorua; 'Bus Free  
from Station to Hotel for Guests.

Tariff from 9s. per day.

ROX. WOODWARD ..... Proprietor  
(Late Grand and Palace Hotels, Roto-  
rua, and Royal Hotel, Auckland).

C. W. CLARKE,  
AERATED WATER MANUFAC-  
TURERS,  
TUTANEKAI STREET, ROTORUA.

Home-brewed Stone Ginger Beer and  
Hop Beer a Specialty.

Ring up Phone 23.

## STRATFORD.

## STRATFORD HOTEL, BROADWAY, STRATFORD.

(Opposite Newton King's Offices.)

This Hotel is now under new man-  
agement, and is being thoroughly re-  
novated. Liquors of the Best, and  
Speight's beer only drawn.

F. WHITTLE ..... Proprietor.

## EMPIRE HOTEL, STRATFORD.

This well-known house of call has  
been taken over by MR. CECIL ALDEN,  
well-known in sporting circles. A  
hearty welcome to all old and new  
friends. Speight's Beer on tap, and  
Wines and Spirits true to label. Tariff  
6s. 6d. per day.

## SOUTHLAND.

## CROWN HOTEL, OTAUTAU, SOUTHLAND.

M. O'BRIEN ..... Proprietor.

EVERYTHING OF THE VERY BEST.  
Motor Cars for Hire, Tours Arranged  
to all Parts of the District.  
Horses and Traps for Hire. Excellent  
Stabling.

## STEWART ISLAND.

## FERNDALE HOUSE, STEWART ISLAND.

The Leading House for Tourists and  
Travellers, situated on the rise over-  
looking Half Moon Bay, and close to  
Wharf. First-class Accommodation;  
Excellent Cuisine. Tariff 30/ per week.  
MRS. C. HICKS ..... Proprietress.

## SANSON.

## JUNCTION HOTEL, SANSON.

MRS. Z. L. BUCKERIDGE,  
Proprietress.  
(Formerly of Wairarapa, Wellington  
and Napier.)

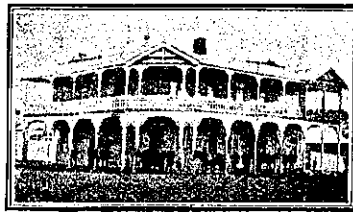
Favourite stopping place for motor-  
ists between Wanganui and Wellin-  
gton. Everything of the Very Best.  
A Hearty Welcome to all.

## TE AWAMUTU.

TE AWAMUTU HOTEL,  
TE AWAMUTU.  
(Containing over fifty rooms.)  
THE HOME FOR COMMERCIALS  
AND TOURISTS.

Hot and cold baths, and every mod-  
ern convenience. Best Dunedin Ales  
on draught.  
Travellers by Main Trunk Express  
specially catered for. Phone No. 2.  
JAS. JACKSON ..... Owner.

## TAIHAPE.



## GRETNA HOTEL, TAIHAPE.

FIRST-CLASS ACCOMMODATION FOR  
TRAVELLERS.

EVERY COMFORT AND CON-  
VENIENCE.

FIRST-CLASS TABLE D'HOTE.

WELL EQUIPPED COMMERCIAL  
ROOMS.

ALL LIQUORS OF THE BEST.

W. McLENNAN ..... Proprietor.

## TURAKINA.

## RAILWAY HOTEL, TURAKINA.

IVAN MILLS ..... Proprietor.

Passengers by train have ample time  
for refreshments.  
Everything of the Very Best.  
Wines, Spirits and Ales true to  
label.

## TE KUITI.

## "RIVERSIDE" PRIVATE HOTEL, TE KUITI.

EXCELLENT ACCOMMODATION  
FOR VISITORS.

Electric Light. First-class Table.  
25 Spacious Rooms.

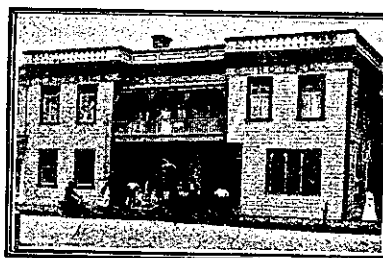
RECENTLY ENLARGED AND  
RENOVATED.

Letters and Telegrams Attended To.

Tariff, 5s. 6d. per dlem.

MRS. J. STEWART ... Proprietress.

## TAURANGA.



## TAURANGA HOTEL, TAURANGA.

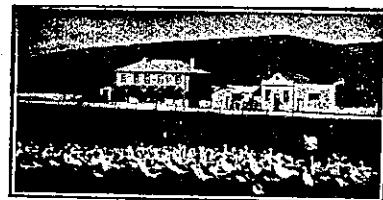
FIRST-CLASS CUISINE AND  
ATTENTION.

ALES, WINES AND SPIRITS OF  
GUARANTEED QUALITY.

Correspondence Promptly Attended to.  
P.O. Box 37.  
Telegraphic Address: "Tourist,"  
Tauranga.

SAMUEL TANNER ..... Proprietor.  
(Late of Waihi).

## TE AUTE.



## TE AUTE HOTEL, HALF-WAY BETWEEN WAIPAWA AND HASTINGS.

Best Wines and Spirits kept. Good  
table. Good Shooting and Fishing.  
T. BURGESS ..... Proprietor.

## THAMES.

## ROYAL HOTEL, THAMES.

(Under New Management.)

FIRST-CLASS ACCOMMODATION.

UP-TO-DATE SERVICE.

HOT AND COLD BATHS.

TELEGRAMS PROMPTLY ATTENDED  
TO.

J. W. H. BRIGHT ..... Proprietor.  
Late of Hamilton and Waikato Hotels.

## PACIFIC HOTEL.

THAMES.

This Hotel offers Special Facilities  
to Commercial Travellers and Visitors,  
being Convenient to Steamer and Train.

SPLENDIDLY APPOINTED.

WINES, BEERS, AND SPIRITS OF  
THE VERY BEST.

FIRST-CLASS TABLE.

Letters and Telegrams Promptly  
attended to.

R. E. PRICE ..... Proprietor.

## "Caed Mills Falls," SHORTLAND HOTEL, THAMES.

Three minutes from train and Short-  
land Wharf. First-class Accommoda-  
tion; Excellent Table. All Liquors  
Fresh as the latest news. C. and E.  
Ale on Draught.

W. CANNER ..... Proprietor.  
Phone 145.

## SALUTATION HOTEL, MARY STREET, THAMES.

HARRY BROWNLEE, Proprietor.

Only SPEIGHT'S ALE on Draught.

Best Ale in Town.

## POST OFFICE HOTEL, MARY STREET, THAMES.

Visitors will find here excellent ac-  
commodation, and the very Best Wines,  
Spirits, and Ales.

MRS. W. MORRISON .. Proprietress.

## TANGITERORIA.

## TANGITERORIA HOTEL, TANGITERORIA.

The above Hotel is now under new  
Management.  
ONLY THE BEST WINES AND  
SPIRITS STOCKED.

JAS MEWETT ..... Proprietor.

## TAUPIRI.

## TAUPIRI HOTEL, TAUPIRI.

SPLENDID ACCOMMODATION.  
CLOSE TO RAILWAY STATION.  
THE VERY BEST LIQUORS IN  
STOCK.

S. KEOGH ..... Proprietor.

## TIMARU.



## SEA VIEW HOUSE, (Private) TIMARU.

Four minutes from Post Office. Over-  
looking Caroline Bay. 35 rooms, includ-  
ing Billiard and Smoke Rooms. Hot  
and Cold Baths. Promenade roof with  
commanding view. Excellent Cuisine.  
Tariff Moderate. Phone 394.

MRS. HYMAN ..... Proprietress.

## CROWN HOTEL, TIMARU.

EXCELLENT ACCOMMODATION AND  
ATTENTION.

Central Location. Handy to Caroline  
Bay, Theatres, Wharf and Railway.  
Nothing but the Best in the Bar.  
R. BERTI ..... Proprietor.

## THE DOMINION HOTEL, TIMARU.

The most modern and up-to-date  
Hotel in Timaru, overlooking Caroline  
Bay and the Harbour. Everything new  
inside and out. Absolutely fireproof.  
Electric light, and replete with every  
convenience. Bath-rooms, hot and cold  
water on every floor. Moderate Tariff.  
JOHN REILLY ..... Proprietor.

## W. QUIRKE

(Late of the Crown and Royal Hotels),  
Has taken over the well-known and  
favourite

## EXCELSIOR HOTEL, TIMARU.

Friends will find the Wines, Ales,  
and Cuisine up to the standard that  
has been identified with his previous  
hostelries.

## CITY BOARDING HOUSE, Corner CHURCH AND SOPHIA STS., TIMARU.

Conducted on up-to-date lines. Every  
comfort and attention. First-class meal  
is. Special accommodation for holi-  
day visitors.  
J. J. DREW ..... Proprietor.