

J. T. STEMBRIDGE AND CO.,
PUKEKOHE.

PUKEKOHE AUCTION MART.
IMPORTANT LAND SALE

ON TUESDAY, AUGUST 24, 1915,
at 2 p.m.

MESSRS. J. T. STEMBRIDGE AND CO., under instructions from the Owners, will sell as above the following properties:—

ARARIMU—Dairy Farm 300 acres, being part 97 Opaheke; 70 acres in grass; a dwelling of 7 rooms. Close to School and Post Office; Creamery one mile. Main road frontage. Easy terms.

ROTORUA—57 acres, L.I.P., 2 1/4 miles from Rotorua; partly drained swamp; nearly all in grass; one acre orchard and garden. Two cottages on the property. Good opportunity for a dairyman.

PUKEKOHE—1/2 acre section Lot 5 of 160 Victoria St., Pukekohe. A splendid building site. Easy terms.

PUKEKOHE—Allotment 8, Railway Reserve, with large iron shed erected thereon; lease 19 years to run. An exceptional site for a shop or office, being opposite the entrance to the Railway Station.

A WHITU—23 1/2 acres W.P. and 39 with cottage of 4 rooms thereon; close to church, school and P.O. Three road frontages; very suitable for a poultry farm. Easy terms.

PUKEKOHE—1/2-acre section, P. and 76 sect. 1, situated in Victoria St. A good building site in the Borough area.

PUKEKOHE—1/2-acre section, situated in Manukau Road. A good building site; easy terms.

The above properties are flagged. Full particulars from the Auctioneers.

J. T. STEMBRIDGE AND CO.,
LAND AGENTS AND AUCTIONEERS,
PUKEKOHE.



Dunlop Football Bladders are the Best.

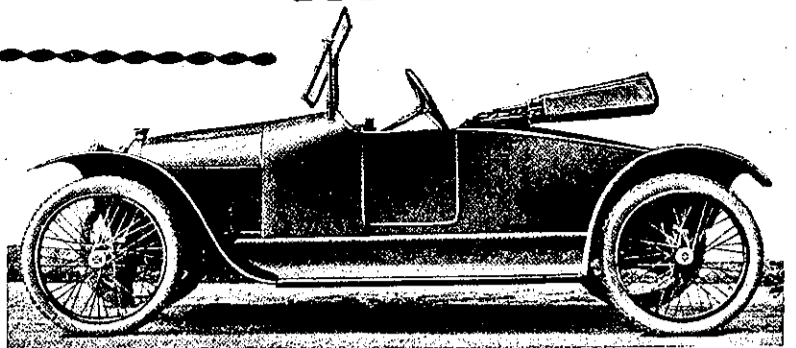
J.A.C.

DUNLOP SPORTING GOODS

Our Football Bladders

are now used by nearly all the leading clubs of Australasia, owing to their freshness and high quality of rubber. They are free from perish and beautifully made. Stocked in all sizes by leading Sports Dealers. Specify "DUNLOP" Brand when ordering. Our Golf, Tennis and Bat Grips are unequalled for Quality and Price. Rubber Solea Speciality.

THE DUNLOP RUBBER CO.,
Melbourne, Sydney, Adelaide, Perth, Brisbane, Christchurch, N.Z.



The RITZ LIGHT CAR
HAS ARRIVED!

Do not buy a Motor Car until you have seen this. IT MEETS YOUR NEEDS.

Price - £147 : 10 : 0

WEIGHT: 10 CWT.
MOTOR: 12-15 HORSE-POWER.
WHEELS: 28 X 3 INCHES.
PETROL: THIRTY-FIVE MILES PER GALLON.

We have exhaustively examined the car throughout, and find it in every degree according to warranty. We cordially invite inspection. Send us your Address, and we will forward Descriptive Pamphlet. ONE OF THE FINEST, CHEAPEST AND STRONGEST CARS ON THE MARKET.

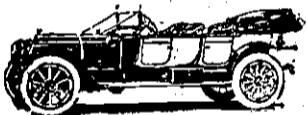
SOLE AGENTS:

SKEATES & WHITE,
Customs Street East - AUCKLAND.
Cars Garaged. TELEPHONE 3114.

—BACON'S—

MOTOR AND LIVERY STABLES,
KING STREET, DUNEDIN.

Telephone 198.
Vehicles of all kinds for hire. Latest Model 25 h.p. Studebaker Motor Cars with electric starter and lights for hire at shortest notice.
JAMES JEFFS Proprietor.



CARS FOR HIRE DAY OR NIGHT.
Tel. 176

GEORGE REMDEN, Motor Proprietor.
54, Nile St. East, NELSON.
Charges reasonable. All steamers met. Visitors to Nelson wire for car.

NEW ZEALAND MOTOR TRANSPORT CO., LTD.,
SHIPPING, CUSTOMS AND FORWARDING AGENTS,
299, PRINCES STREET, DUNEDIN.

Carry Your Furniture Anywhere.
Your Goods—Yourself.
Picnic Parties, Lodges, Sports Clubs, Etc., Catered for.
Our Prices are Right.

Make Your Enquiry by Letter, Wire or 'Phone 3625.

F. McDONALD Manager.

YACHTS, MOTOR BOATS AND MERCANTILE VESSELS OF ALL KINDS.

DESIGNS, SUPERVISION OF CONSTRUCTION, SURVEYS, ETC.

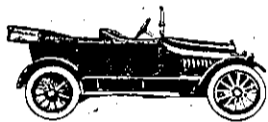
Designer of over 250 Successful Vessels.

JAMES A. SMITH, M.Inst.N.A.,

Naval Architect and Engineer,
47, Leadenhall St., LONDON, England.
Cables: "EISENANT, LONDON." All Codes used.

READ THE NEW ZEALAND MOTOR AND CYCLE JOURNAL
For Latest Motoring News.

PAHIATUA TAXI SERVICE.



All Trains Met.

Tours Arranged to all Parts of the District.
Experienced Drivers. Charges Reasonable. Address wires—
B. H. WILLS, Pahiatua.

CARS OR TAXIS FOR HIRE.

Ring up 'Phone 110.

AMBULANCE ALWAYS READY.

WAIKATO LIVERY AND BAIT STABLES.

JURY BROS.,

HOOD STREET, HAMILTON.

ALL KINDS OF VEHICLES AND HORSES FOR HIRE AT THE SHORTEST NOTICE.

Coaches Meet all Trains, Including Main Trunk Expresses at Frankton.

Groom in Attendance All Night.

WAIKARI MOTOR GARAGE.

STATION ROAD, WAIKARI.

CHARLES BLAKE
PROPRIETOR.

REPAIRS A SPECIALTY. ALL WORK GUARANTEED.

TYRES, PETROL AND ALL ACCESSORIES IN STOCK.

Agent for Following Cars:
HUPMOBILE, OVERLAND, SIDDELEY-DEASEY.

CARS ON HIRE AT ALL HOURS.

OLEO PLUGS



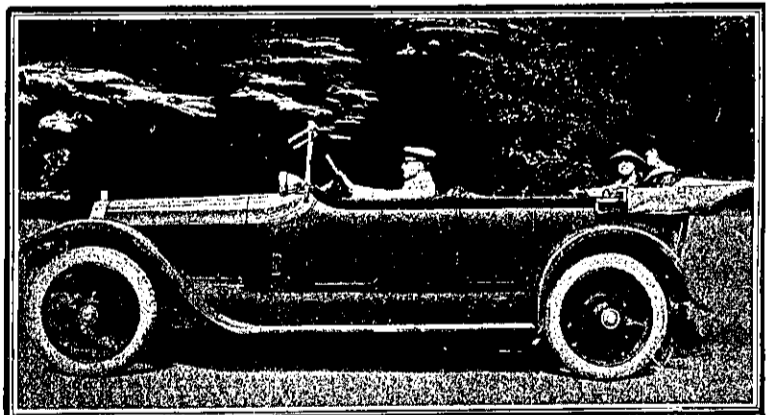
UNIQUE FOR GOOD IGNITION

Sold Everywhere. LEO RIPAULT & CO., LONDON.

USE SAWDUST TO GENERATE YOUR POWER.

The "WHITFIELD" Suction Gas Plant will develop 1 brake horse power from every 2 1/2 to 3lb of sawdust used. Plants have been in use for over 10 years. Extreme Flexibility. Efficiency and Reliability. Successful Results Guaranteed.—SALMON, WHITFIELD AND CO., KETTERING, ENGLAND.

The Glorious Napier Car



THE NEW 20 COLONIAL NAPIER.

The "Financial News," reviewing the noiseless NAPIER, describes it as:

"PRE-EMINENTLY
"THE CAR OF
"THE DAY"

One or two of these famous models, which have not been commandeered by the War Office, can still be offered for early delivery.
They cannot be repeated for some time.

For particulars please apply AT ONCE to:

Spink & Miller, Ltd.,
Sole Agents for New Zealand,
5, Customs Street East, AUCKLAND.
PHONE A2024.

HORROCKSES'

**FLANNELETTES
LONGCLOTHS
MADAPOLAMS and DRILLS**
beat all competition

SEE HORROCKSES' NAME ON SELVEDGE and decline all substitutes.

Sold by all First-Class Drapers and Storekeepers
HIGHEST AWARDS AT ALL THE GREAT EXHIBITIONS.