

THE TOURIST AND TRAVELLER. WHERE TO STAY AND WHERE TO GO.

MARTINBOROUGH.



CLUB HOTEL,
MARTINBOROUGH.
Under New Management.
Excellent Accommodation for Travel-
lers, Boarders and Visitors. A First-
class and Liberal table. Dining-room
in charge of competent chef. Wines,
Spirits and Ales of the Best Brands.
C. F. PRIEST Proprietor.

MASTERTON.



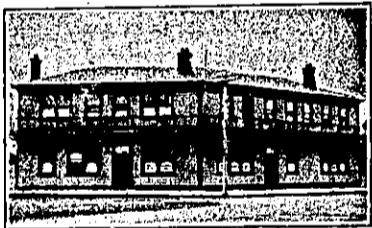
CLUB HOTEL,
MASTERTON.
HERMANN CRASS Proprietor.
(Late of Arcadia Hotel, Wellington, the
Wellington Club, and the Union
Company's Boats).
First-class table. First-class sample-
rooms. Tariff, 9s. per day. Phone 57.

MANGONUI.



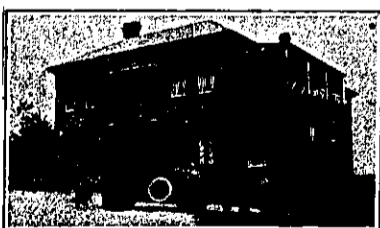
MANGONUI HOTEL,
MR. A. G. DE SILVA
Is now the proprietor of the above
well-known Hotel. Travellers will find
the Accommodation to be the best in
the North. Everything is done for
their comfort that is possible. Only
the Best Liquors procurable in the
market kept. Tariff moderate. Ex-
cellent stabling. Good billiard table
(couches stop at the door. All steam-
ers met on arrival.
A. G. DE SILVA Proprietor.

MANAIA.



WAIMATE HOTEL,
MANAIA.
JOHN RUSSELL Proprietor.
THE TOURISTS' RENDEZVOUS.
SPLENDID ACCOMMODATION.
FISHING AND SHOOTING.

MAUNGATUROTO.



MAUNGATUROTO HOTEL,
MAUNGATUROTO.
MRS. E. E. HYLAND .. Proprietress.
The Hotel has recently been reno-
vated and refurbished throughout and
offers first-class Accommodation to
Travellers. Only the best brands of
Wines, Ales, Spirits, Etc. kept in stock

THE MOST TALKED ABOUT PAPER
At the present time is the
The N.Z.
SPORTING AND DRAMATIC
REVIEW.

The high standard set for itself in
the way of Illustrations, the smartly-
written articles dealing with Pure
Sport, all tend to make the paper the
huge success it is.

Everybody's taking it, so why don't
you?

PRICE 6d.—All Booksellers.

MOTUEKA.

THE NEW POST OFFICE HOTEL,
MOTUEKA.

H. G. HOULDSWORTH, Proprietor.
The most central position in the
town. The most up-to-date Hotel in
the Nelson Province. Every convenience
for the Travelling Public. Electric
light throughout. Tourists will find
it a pleasure to stay here.
Fishing and Shooting Parties ar-
ranged. Special conveyance to and
from wharf.
Cuisine par excellence. Cosy Sitting-
rooms for Ladies. Large, comfortable
and convenient Commercial Rooms.
Attention prompt and reliable. An
ideal hostel for travellers. Billiard
Room. Sample Rooms. Wines and
Spirits of the Best. P.O. Box No. 11.
Telephone No. 11

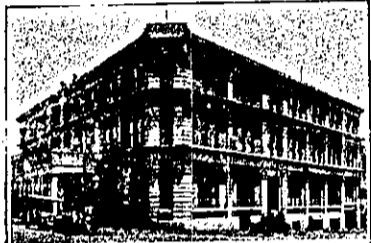
THE MOTUEKA HOTEL,
HIGH STREET, MOTUEKA.

C. ALLINGTON Proprietor.
Letters and telegrams receive prompt
attention. First-class Billiard table.
Arrangements made for parties to be
driven to all parts of the district. Cabs
meet all steamers.

NAPIER.

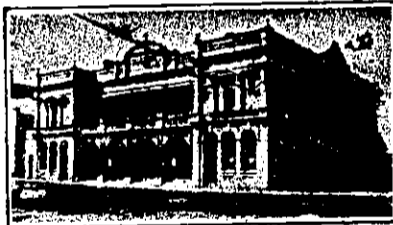
TERMINUS HOTEL,
NAPIER.

An ideal House for Travellers, ad-
joining Railway Station.
First-class Accommodation. Moderate
Tariff.
Liquors absolutely true to label.
G. F. BONNAR Proprietor.



CALEDONIAN HOTEL,
NAPIER.

Now under the Proprietorship of
FRANK RHODES, late of the Empire
Hotel, Timaru.
Five minutes Post Office and Station.
Accommodation for 100 guests. Ex-
cellent Cuisine. Moderate Tariff.
Telegrams — "Rhodes, Caledonian,
Napier."

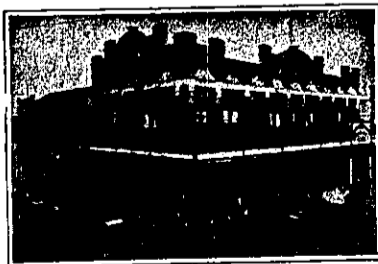


PROVINCIAL HOTEL,
CLIVE SQUARE, NAPIER.

This well-known House, which is
situated in close proximity to the Napier
Railway Station, has been taken over
by **MR. R. K. GRIFFIN**, well known in
Auckland contracting circles.
Wines and Spirits of the Very Best.
Correspondence promptly attended to
R. K. GRIFFIN Proprietor.

CLARENDON HOTEL,
Opposite Post Office, NAPIER.

BEST OF SPIRITS AND WINES.
SPEIGHT'S BEER.
GOOD ACCOMMODATION.
H. T. HANLON Proprietor.



THE CENTRAL HOTEL,
NAPIER.

EXCELLENT CUISINE AND EVERY
MODERN CONVENIENCE.
A MODERATE TARIFF.
Telephone 236.
W. E. HILL Proprietor.

NELSON.

EXCHANGE HOTEL,
NELSON.

R. (BOB) T. BLAND.
Extensive alterations have been made
in the interior of this OLD ESTAB-
LISHED HOSTELRY, and Patrons will
find the New Bar second to none in
the City for comfort and convenience.
A CALL SOLICITED.
NONE BUT THE BEST OF LIQUORS.

NELSON.

WAKATU HOTEL,
NELSON.

MR E. (TED) J. WINTER, Proprietor,
has much pleasure in informing old
friends that he has taken over the above
well-known Hotel. Visitors to Nelson
can secure excellent accommodation at a
Moderate Tariff. A home away from
home. Seats booked here for motor
car for Motueka and Takaka.

GAY'S
CITY LIVERY STABLES,
NELSON.

Carriages as supplied to His Excel-
lency Lord Islington. Commercial bug-
gies, gigs, and vehicles of all descrip-
tion on hire. Motor Cars for Hire.
Established 1866. Phone 60.
H. GAY Manager.

RAILWAY HOTEL,
RICHMOND, NELSON.

C. KNIGHT Proprietor.
Opposite Railway Station gate, 5min.
walk from Show Grounds and
Racecourse
Good accommodation. Motor tourists
will receive every attention, also sup-
plied with petrol at ordinary rates.
Also good stable and loose box accom-
modation for horses. Phone No. 5.

PANAMA HOTEL,
NELSON.

C. H. SATHERLEY Proprietor.
(Late of Pelaros Hotel, Canvastown)
WINES, SPIRITS AND ALES OF THE
VERY BEST.
FIRST-CLASS ACCOMMODATION.

VISITORS TO NELSON.
STAY AT

THE MASONIC HOTEL.

J. P. BEIRNE Proprietor.
(Late of the Grosvenor Hotel, Blen-
heim, and Oxley's Hotel, Picton).
Has taken over the MASONIC, Nelson's
Leading Hotel, and visitors to the
"City of Sunshine" are assured of first-
class treatment at this well-known
establishment.

ACCOMMODATION SECOND TO
NONE.
ONLY BEST BRANDS OF LIQUORS
SOLD.

PROVINCIAL HOTEL,
BRIDGE STREET, NELSON.

(Opp. Queen's Gardens and Government
Buildings.)
Hot and cold water laid on. The
above Hostelry is now under new man-
agement and is being conducted by **MR.**
J. D. MORLAETH, well known in West-
port and Greymouth. A hearty wel-
come to all old and new friends. Har-
ley's Prize, Ales on draught. Moderate
Tariff. Telephone 296.

NEW PLYMOUTH.

ROYAL HOTEL,
NEW PLYMOUTH.

Offers First-class Accommodation to
Travellers. Renovated and refurbished
throughout. Best of everything.
W. G. EMENY Proprietor.

CRITERION HOTEL.



NEW PLYMOUTH.

Being centrally situated is unequalled
for Tourists and Commercial Gentle-
men. The table is maintained at a uni-
form standard of excellence, and visi-
tors can be certain of obtaining the Best
Menu in New Plymouth. Hot and Cold
Baths always available. Sanitary ap-
pointments are well up to date. Night
porter in attendance.
J. McKEAN Proprietor.
P.O. Box 21. Phone No. 30.

GROSVENOR HOTEL,
NEW PLYMOUTH.

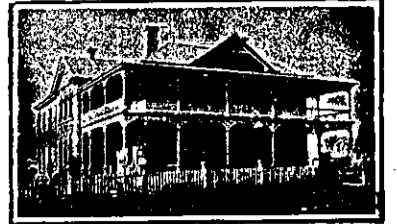
The above Hotel is directly opposite
Railway Station, and overlooks the sea,
and offer. First-class Accommodation
to the Travelling Public.
TARIFF 6s. 6d. PER DAY.
CHAS. A. HARRISON ... Proprietor.

NGARUAWAHIA.

WAIPA HOTEL,
NGARUAWAHIA.

A first-class up-to-date Hotel, border-
ing on the banks of the Waikato River
famous for trout fishing. All informa-
tion given to anglers. Fine duck-shoot-
ing in season. Wines and spirits of
the best. First-class table. Telegrams
promptly attended to.
B. A. SMITH Proprietor.

OTAHUHU.



CRITERION HOTEL,
OTAHUHU.

Good Accommodation for the Travel-
ling Public.
Only the Best Brands of Wines, Ales,
Spirits, etc., kept in Stock.
SECCOMBE'S DRAUGHT ALES.
W. J. WILLIAMS Proprietor.

ONEHUNGA.

HIBERNIAN HOTEL,
QUEEN STREET, ONEHUNGA.

FIRST-CLASS ACCOMMODATION.
Only Best Wines and Spirits Stocked.
Tariff, 6s. 6d. per day.
MRS. H. DINGLE Proprietress.

OAMARU.

YOUR LUGGAGE removed from
Station, Hotel, anywhere, care-
fully and with despatch.
ERNEST R. SPEID,
Carrier.
Phone 363, or Star and Garter
Hotel, Box 31.
Letters and Telegrams receive
prompt attention.

Visitors to OAMARU can Obtain
Excellent Fish Suppers at
G. W. TODD'S LUNCHEON
ROOMS,
THAMES STREET, OAMARU.

Cleanliness and Civility a strong
point. Have own boats fishing. The
trade supplied.

OHAEAWAI.

OHAEAWAI HOTEL,
OHAEAWAI.

FIRST-CLASS ACCOMMODATION.
Commercial Room, Private Sitting
Rooms, Bath Room, Etc.
Good Stabling and Paddocking.
Billiards.

W. MAY Proprietor.

OTAKI.

CENTRAL HOTEL,
OTAKI.

GEO. TULLOCH Proprietor.
BEST WINES AND SPIRITS.
EVERY COMFORT FOR THE
TRAVELLING PUBLIC.

WEST OXFORD.

COMMERCIAL HOTEL,
WEST OXFORD.

The Favourite Commercial House in
the District. Recently renovated and
refurnished throughout.
First-class Accommodation. Excel-
lent Cuisine.
F. W. GLASSON Proprietor.

PICTON.

OXLEY'S HOTEL,
CORNER LONDON QUAY AND WEL-
LINGTON STREET, PICTON.

MRS. E. C. HIGGINS, Proprietress...
This well-known, popular and up-to-
date Hotel has been entirely renovated,
and, being fitted with every modern
convenience, is specially suited to the
requirements of the travelling public.
Situated as it is with a commanding
view of the beautiful Queen Charlotte
Sound, OXLEY'S HOTEL is an ideal
House for holiday-makers and tourists.
Motor Cars and Motor Boats always
at the disposal of our boarders. Tariff
reasonable, and comfort guaranteed.
First-class table always kept, and only
the very best Liquors dispensed. Elec-
tric light installation throughout. Hot
and cold shower baths. The billiard
room is in charge of an experienced
marker. Telephone No. 1.

PAPAKURA.

GLOBE HOTEL,
PAPAKURA.

MRS. I. SMITH Proprietress.
The leading Commercial Hotel in the
District. Excellent accommodation for
Tourists, Travellers and Visitors. First-
class table always kept. All meals 1s.
6d. Wines and Spirits of the Best
quality. Popular Lion Ale on tap. Every
attention and comfort. Afternoon tea
for motoring parties a speciality. Good
stabling and paddocks. Horses and
traps for hire. Moderate tariff.

PAPAKURA HOTEL,
PAPAKURA.

The leading Commercial Hotel in the
District. Excellent accommodation for
Visitors, Travellers and Tourists. First-
class Table.
Wines and Spirits of the Best quality.
Afternoon Tea for Motoring Parties a
Specialty.
Good Stabling and Paddocks.
Horses and Traps for Hire.
Tariff Moderate.
C. WATERMAN Proprietor.