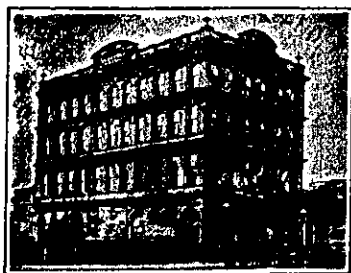


THE TOURIST AND TRAVELLER. WHERE TO STAY AND WHERE TO GO.

AUCKLAND.



**WAVERLEY HOTEL.**  
QUEEN STREET, AUCKLAND.

Next to New Post Office, Railway Station, Motor Car Stand, and Wharf. First-class Table d'Hote. Conveyance meets Steamers and Trains. Tariff: 8s per day; £2 2s per week. Telephone 370.

E. M. PAGE ..... Proprietor.

**STAR HOTEL.**

(Under New Management).

ALBERT STREET, AUCKLAND.

S. J. ATKINS ..... Proprietor.

FIRST-CLASS ACCOMMODATION FOR TOURISTS.

Easy walk from Wharves and Railway Station, and two minutes from main thoroughfare, QUEEN ST.

TARIFF: 10s. to 12s. 6d. per day, according to location of Room. Rates per period and for private rooms quoted on application. Special rates for Commercial Travellers.

**KIDD'S COMMERCIAL HOTEL.**

CORNER HIGH AND SHORTLAND STREETS, AUCKLAND.

SPEIGHT'S XXXX ALE ALWAYS ON TAP.

WILLIAM JONES ..... Proprietor.

**HAVE YOU BAD LEG**

with wounds that discharge or otherwise, perhaps surrounded with inflammation and swollen, that when you press your finger on the inflamed part it leaves the impression? If so, under the skin you have poison, which defies all the remedies you have tried. Perhaps your knees are swollen, the joints being ulcerated, the same with the ankles, round which the skin may be discoloured, or there may be wounds; the disease, if allowed to continue, will deprive you of the power to walk. You may have attended various hospitals, and been told your case is hopeless, or advised to submit to amputation; but do not; try the Grasshopper Treatment; which is a sure and certain restorer in cases of Bad Legs, Ulcerated Joints, Housemaid's Knee, Poisoned Hands, Abscesses, Glandular Swellings, Carbuncles, Bunions, Snake, Insect and Dog Bites and all Skin Diseases. Send at once to the Drug Stores for a box of

**GRASSHOPPER OINTMENT AND PILLS.**

Prepared by ALBERT, Albert House, Farningdon Street, London, England. Price in England 1/12 and 2/9 per box.

Telegraphic Address: Farmers' Union, Whangarei.

**The Auckland Farmers' Union, Ltd.**

STOCK & GENERAL AUCTIONEERS.

ESTATE COMMISSION AND INSURANCE AGENTS, VALUATORS, ETC.

Head Office: Bank St., WHANGAREI

STOCK SALEYARDS: Kaitiaki, Oruru, Kaeo, Taheke, Kaitiaki, Ohaeawai, To-wal, Pakotai, Mangakahia, Whangarei, Kamo, Poroti, Waipu, Mangawhare, Arapohue, Raupo, Matakohe, Paparoa, Kaiwaka, Maungaturoto, Warkworth, Wellsford, Puhol, Silverdale, Auckland.

OUTDOOR SALES CONDUCTED.

L. W. NELSON, Auctioneer.

**HOMER MARSH.**  
BUICK, D.—Flock No. 42, N.Z.F.B. Good hardy rams on sale at moderate prices. Apply D. Bulck, "Clover Lea" Stud Farm, Palmerston North.  
BUICK, D.—The "Clover Lea" herd is headed by the Duke of Manchester 15th 1878 (Duke of Manchester 15th. 1887)—Harrier (2024), and the pedigree cows are all of a strong milking strain.—W. D. Bulck, "Clover Lea" Palmerston North.



**CALEDONIA HOTEL.**  
Corner of KARANGAHAPE ROAD and SYMONDS STREET.

CAMPBELL-HERBERT'S SPARKLING ALE ON DRAUGHT. Ales, Wines, and Spirits of the BEST BRANDS ONLY, and all true to label.

C. W. DUNMORE ..... Proprietor.

**OCCIDENTAL HOTEL.**

VULCAN LANE, AUCKLAND.

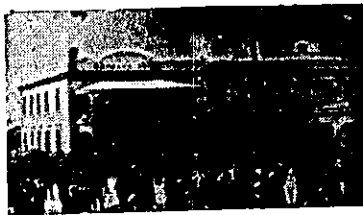
MRS. N. LYNCH ..... Proprietress. (Late of Clarendon and City Hotels, Auckland.)

**STRAND HOTEL.**

MECHANICS BAY, AUCKLAND. J. H. MOORE ..... Proprietor. (Late Proprietor Ohinemuri Hotel, Paeroa, for 12 years.) BEST BRANDS OF ALES, WINES AND SPIRITS. MODERATE TARIFF

**HOTEL MON DESIR.**

LAKE TAKAPUNA. Visitors and Tourists will find this Magnificent Hostelry is replete with every modern convenience. Every brand of Wine, Spirit and Liqueur is always in stock and true to label. Speight's beer on draught. Magnificent grounds and gardens absolutely at the disposal of visitors. (Late Imperial Hotel, New Plymouth.) J. SMITH ..... Proprietor



**WAIMATE HOTEL.**

WAIMATE. MORGAN O'BRIEN ..... Proprietor.

Newly renovated and furnished in up-to-date manner. Hot and cold baths. First-class table. Large and commodious and well-lighted sample rooms. Moderate Tariff

**TOURISTS & TRAVELLERS**

When visiting INVERCARGILL are notified that their Luggage, etc., will be carefully handled if entrusted to

**MARTIN & CO.,**  
FORWARDING AGENTS,  
INVERCARGILL.

Expert Furniture Packers and Removers.

Agents for N.Z. Carrying Coy Office: Don Street. Yards: Don St., Liddel St., Findhorn St.

UP-TO-DATE SAMPLE ROOMS.

MONEY TO LEND on first-class Freehold Security at Current Rates.

**HESKETH AND RICHMOND**  
Solicitors,  
WYNDHAM STREET, AUCKLAND.

THE MOST UP-TO-DATE WAR PICTURES APPEAR IN THE  
**N.Z. SPORTING & DRAMATIC REVIEW.**

PRICE 6d. ALL BOOKSELLERS.

AWANUI.

**AWANUI HOTEL.**  
AWANUI.

T. J. FLEMING ..... Proprietor. FIRST-CLASS ACCOMMODATION. ONLY THE BEST OF LIQUORS STOCKED.

AKAROA.

Visitors to Akaroa can obtain superior PRIVATE BOARD AND RESIDENCE at

D. HANDESIDE'S PRIVATE BOARDING ESTABLISHMENT, JOLLIE STREET, AKAROA. (Opposite Pilkington's Motor Garage) Close to Main Wharf. Tariff Moderate. All Conveniences

ASHBURTON.

TOURISTS AND TRAVELLERS can obtain first-class accommodation at the

**COMMERCIAL HOTEL,**  
ASHBURTON.

Newly renovated and refurnished throughout. Electric light installed. All modern conveniences. Two Alcock's billiard tables. Sample rooms in centre of town.

MRS. W. YOUNG .... Proprietress.

BLENHEIM.

JOHN BARRY'S  
**MARLBOROUGH HOTEL.**  
BLENHEIM.

Good and Substantial Accommodation with every comfort, at moderate charges. A favourite house for good whiskies and ales.

**ROYAL HOTEL,**  
BLENHEIM.

R. CANN ..... Proprietor. (Late Royal Hotel, Nelson). THE SPORTSMAN'S HOME. TARIFF, 4/6 PER DAY, 25/- WEEK

**GROVETOWN HOTEL,**

NEAR BLENHEIM. P. H. JENKINS ..... Proprietor. Situated in an excellent Shooting and Fishing District this Hotel offers many advantages for those requiring a holiday. Trout and Deer abound in large numbers in the locality. TARIFF 4/6 PER DAY. Wines, Ales & Spirits of the very best

**GROSVENOR HOTEL,**  
BLENHEIM.

J. DEVEREUX ..... Proprietor. (Late of the Taueru Hotel, Wairarapa). Good stabling and Paddocking Capital table kept. Best of Wines, Beer and Spirits sold. Tariff, 6s. day, or 30s. weekly. A Home away from Home.

**EMPIRE HOTEL,**

BLENHEIM. In intimating that I have taken over the above Hotel, I have every confidence that past patrons will renew their support to the new regime. The public generally and commercials will have every attention to their home comforts, and all sorts of liquors will be found to be of the very best. Nothing is stocked that will be kept, as the very best only will be sold, and good quality will not keep; it will have a quick sale. TOM KEATING ..... Proprietor

BULLS.

**RANGITIKEI HOTEL.**  
BULLS.

EXCELLENT ACCOMMODATION FOR THE TRAVELLING PUBLIC. THE CHOICEST BRANDS OF LIQUORS IN STOCK.

W. H. HOSKING ..... Proprietor.

BLUFF.

**CLUB HOTEL,**  
BLUFF

(Opposite Railway Station.) A. F. TAYLOR ..... Proprietor.

First-class Accommodation for Tourists and Commercials. Everything of the very Best. New House and all up-to-date appointments. Tariff 8s. per diem.

**BAY VIEW HOTEL,**  
BLUFF

The Most Southerly Hotel in the World. IAN W. MACPHERSON, Proprietor.

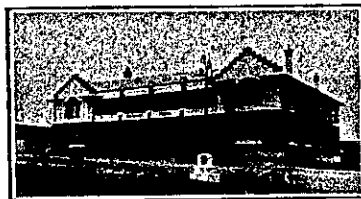
Wines, Spirits and Ales Guaranteed true to label.

**GOLDEN AGE HOTEL.**

BLUFF. C. TULLOCH ..... Proprietor.

The recognised Commercial House of the Town. First-class Table. Wines, Ales and Spirits of the very Best.

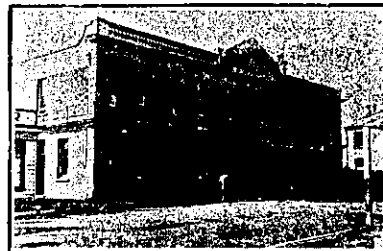
CAMBRIDGE.



**NATIONAL HOTEL.**  
CAMBRIDGE.

(Under New Management.) Opposite the Town Hall and Jubilee Gardens. These fine, new, brick buildings are handy to the Railway Station and the famous Cambridge Domain. Undoubtedly the best appointed Hotel in the Waikato. Climate unrivalled. Excellent cuisine. Moderate tariff. The Best Wines, Spirits and Beer only are served. Letters and telegrams promptly attended to. Telephone 131. Sample Rooms

J. F. FROST.



**MASONIC HOTEL.**  
CAMBRIDGE.

NEW AND UP-TO-DATE BRICK HOUSE, JUST REBUILT. ALL MODERN CONVENIENCES. LEADING FAMILY AND COMMERCIAL HOTEL. UNDER PERSONAL SUPERVISION. Phone No. 1.

JOHN H TULLY ..... Proprietor.

DRINK ONLY

**SPEIGHT'S**  
PRIZE ALES



TO BE HAD EVERYWHERE.

Manufactured by J. SPEIGHT & CO.,  
DUNEDIN.