

THE TOURIST AND TRAVELLER. WHERE TO STAY AND WHERE TO GO.

PALMERSTON NORTH.

THE CLUB HOTEL,

PALMERSTON NORTH.
Stands on two acres of land; frontage 165ft.; promenade balcony; contains 60 bedrooms, and private sitting-rooms, and 12 sample rooms. The appointed house for the Association of N.Z. and Australian Commercial Travellers.

H. B. TUCKER,
Proprietor and Owner.

BURTON BREWERY CO.,

LIMITED,
PALMERSTON NORTH.
ALES AND STOUT IN BULK OR BOTTLE
Brewed only from Choicest Hops and Malt.

To be obtained at all the PRINCIPAL HOTELS IN THE WELLINGTON DISTRICT.

PAHIATUA.

COMMERCIAL HOTEL,

PAHIATUA.
MR. (TED) SULLIVAN wishes his old friends and the Travelling Public to know that he is now in the above well-known House. Everything of the Best.

TED SULLIVAN Proprietor.

PATEA.

MASONIC HOTEL,

PATEA.
The Hotel has been recently renovated and refurbished throughout and offers First-class Accommodation to Travellers.

TARIFF, 4s. 6d. PER DAY.
E. SMITH Proprietor.

THE ALBION HOTEL,

PATEA.
FIRST-CLASS ACCOMMODATION FOR TOURISTS, FAMILIES AND TRAVELLERS.

WINES, ALES AND SPIRITS OF THE BEST.
J. A. COOGAN Proprietor.

PLEASANT POINT.

RAILWAY HOTEL,

PLEASANT POINT.
The above Hotel has just been erected on most modern architectural lines, both inside and out. Electric light. Tourists, Travellers and Sportsmen will find in this House every modern comfort. Motor garage. New Alcock's billiard table.

F. NELLIGAN Proprietor.

PAHI HOTEL,

PAHI.
FIRST-CLASS ACCOMMODATION FOR TRAVELLERS.

BEST BRANDS WINES, SPIRITS, ALES, ETC.
J. RYAN Proprietor.

QUEENSTOWN.



POST OFFICE HOTEL,

(Late Supreme Court),
QUEENSTOWN.
This Hotel has just been thoroughly renovated. Superior accommodation for families, visitors, and the travelling public. Moderate tariff. Letters and telegrams promptly attended to. Telephone 3. P.O. Box 46.

WILLIAM SCOTT Proprietor.

REEFTON.

CRITERION HOTEL,

REEFTON.
T. KENNING Proprietor.
Loose Boxes Always Available.
Also adjoining THEATRE ROYAL. Available at all times for touring companies. Seating accommodation for 500. Correspondence invited. Excellent show town.

RIVERTON.

WHERE TO STAY IN RIVERTON.

RAILWAY HOTEL,

Directly Opposite Railway Station.
Ideal Hotel for a Holiday at the Seaside.
Everything of the very Best.

CHAS. DE CLIFFORD ... Proprietor.

BE SURE AND GET YOUR COPY OF

New Zealand's Brightest and Best Illustrated Paper,

The N.Z.

SPORTING AND DRAMATIC REVIEW.

PRICE 6d. ALL BOOKSELLERS.

ROTORUA.

LAKE HOUSE HOTEL,

OHINEMUTU, ROTORUA.

This Hotel commands an imposing situation on the shores of Lake Rotorua. Mineral and Mud Baths in Hotel Grounds.

Free for guests, the mineral waters of which have highly curative and of which have highly curative and valuable properties. Excellent Cuisine. Electric light. Splendidly laid out grounds.

E. W. G. SMITH Proprietor.
(Late of Cambridge and Tirau).

THE GEYSER HOTEL,

ROTORUA.
Golf Links adjoin the Hotel.
Sited at WHAKAREWAREWA, the amphitheatre of SPOUT BATH.

Free to Guests. Famous for its extraordinary Cures of Rheumatism, Neuralgia, Lumbago, Sciatica, Kidney, Liver and other complaints.

Five minutes from Rotorua; 'Bus Free from Station to Hotel for Guests.

Tariff from 9s. per day.

ROX. WOODWARD Proprietor
(Late Grand and Palace Hotels, Rotorua, and Royal Hotel, Auckland).

C. W. CLARKE,

AERATED WATER MANUFACTURERS,
TUTANEKAI STREET, ROTORUA.
Home-brewed Stone Ginger Beer and Hop Beer a Specialty.

Ring up Phone 23.

STRATFORD.

STRATFORD HOTEL,

BROADWAY, STRATFORD.
(Opposite Newton King's Offices.)
This Hotel is now under new management, and is being thoroughly renovated. Liquors of the Best, and Speight's beer only drawn.

F. WHITTLE Proprietor.

EMPIRE HOTEL,

STRATFORD.
This well-known house of call has been taken over by MR CECIL ARDEN, well-known sporting circles. A hearty welcome to all old and new friends. Speight's Beer on tap, and Wines and Spirits true to label. Tariff 6s. 6d. per day.

SOUTHLAND.

CROWN HOTEL,

OTAUTAU, SOUTHLAND.
M. O'BRIEN Proprietor.

EVERYTHING OF THE VERY BEST. Motor Cars for Hire, Tours Arranged to all Parts of the District. Horses and Traps for Hire. Excellent Stabling.

New Zealand's Brightest and Best Illustrated Paper,

The N.Z. SPORTING AND DRAMATIC REVIEW.
PRICE 6d.—All Booksellers.

TEMUKA.



ROYAL HOTEL,

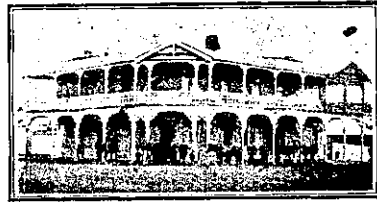
TEMUKA.
Offers First-class Accommodation to Tourists and Travellers. All modern conveniences. Excellent fishing in the neighbourhood. Moderate tariff.
HUGH McCUTCHEON, Proprietor.

TEMUKA.

EMPIRE HOTEL,

TEMUKA.
ANDREW BREEN Proprietor.
(Late of Southland).
Nearest Hotel to Opihi and Temuka Rivers, best fishing grounds in South Island. Splendid duck and hare shooting in season. Wines, Spirits and Ales of the very Best. A Hearty Welcome to all.

TAIHAPE.



GRETNA HOTEL,

TAIHAPE.
FIRST-CLASS ACCOMMODATION FOR TRAVELLERS.
EVERY COMFORT AND CONVENIENCE.

FIRST-CLASS TABLE D'HOTE.
WELL EQUIPPED COMMERCIAL ROOMS.
ALL LIQUORS OF THE BEST.
W. J. JORGENSEN Proprietor.

TE KUITI.

"RIVERSIDE" PRIVATE HOTEL,

TE KUITI.
EXCELLENT ACCOMMODATION FOR VISITORS.
Electric Light. First-class Table. 25 Spacious Rooms.

RECENTLY ENLARGED AND RENOVATED.
Letters and Telegrams Attended To.

Tariff, 5s. 6d. per diem.
MRS. J. STEWART ... Proprietress.

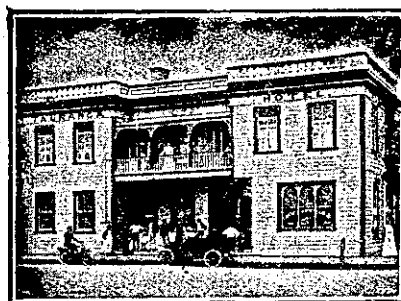
TAUPIRI.

TAUPIRI HOTEL,

TAUPIRI.
SPLENDID ACCOMMODATION. CLOSE TO RAILWAY STATION. THE VERY BEST LIQUORS IN STOCK.

S. KEOGH Proprietor.

TAURANGA.

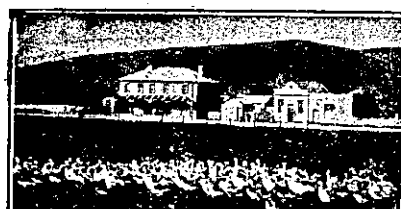


TAURANGA HOTEL,

TAURANGA.
FIRST-CLASS CUISINE AND ATTENTION.
ALES, WINES AND SPIRITS OF GUARANTEED QUALITY.
Correspondence Promptly Attended to.
P.O. Box 37.
Telegraphic Address: "Tourist," Tauranga.

SAMUEL TANNER Proprietor.
(Late of Waihi).

TE AUTE.



TE AUTE HOTEL,

HALF-WAY BETWEEN WAIPAWA AND HASTINGS.
Best Wines and Spirits kept. Good table. Good Shooting and Fishing.
T. BURGESS Proprietor.

TANGITERORIA.

TANGITERORIA HOTEL,

TANGITERORIA.
The above Hotel is now under new Management.
ONLY THE BEST WINES AND SPIRITS STOCKED.
JAS MEWETT Proprietor.

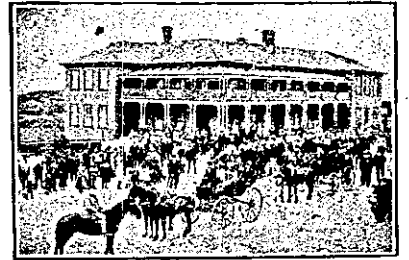
TIMARU.

CROWN HOTEL,

TIMARU.
EXCELLENT ACCOMMODATION AND ATTENTION.
Central Location. Handy to Caroline Bay, Theatres, Wharf and Railway. Nothing but the Best in the Bar.
R. BERTI Proprietor.

TE AROHA.

'Phone No. 1. P.O. Box 51.
PALACE HOTEL,
TE AROHA.



THE HOUSE FOR COMMERCIALS AND THE TRAVELLING PUBLIC.
Hot and cold baths, electric light and every modern convenience.
Excellent Cuisine.
Wines and Spirits of Best Brands.
M. LAWLESS Proprietress.

THAMES.

ROYAL HOTEL,

THAMES.
(Under New Management.)

FIRST-CLASS ACCOMMODATION.

UP-TO-DATE SERVICE.

HOT AND COLD BATHS.

TELEGRAMS PROMPTLY ATTENDED TO.

J. W. H. BRIGHT Proprietor.
Late of Hamilton and Waikato Hotels.

SALUTATION HOTEL,

MARY STREET, THAMES.
HARRY BROWNLEE, Proprietor.

Only SPEIGHT'S ALE on Draught.
Best Ale in Town.

"Caed Mille Failthe,"

SHORTLAND HOTEL,
THAMES.

Three minutes from train and Shortland Wharf. First-class Accommodation; Excellent Table. All Liquors Fresh as the latest news. C. and E. Ale on Draught.
W. CANNER Proprietor.
'Phone 145.

POST OFFICE HOTEL,

MARY STREET, THAMES.
Visitors will find here excellent accommodation, and the very Best Wines, Spirits, and Ales.

MRS. W. MORRISON .. Proprietress.

TE AWAMUTU.

TE AWAMUTU HOTEL,

TE AWAMUTU.
(Containing over fifty rooms.)
THE HOME FOR COMMERCIALS AND TOURISTS.
Hot and cold baths, and every modern convenience. Best Dunedin Ales on draught.
Travellers by Main Trunk Express specially catered for. 'Phone No. 2.
JAS. JACKSON Owner.

TIMARU.



SEA VIEW HOUSE,

(Private) TIMARU.
Four minutes from Post Office. Overlooking Caroline Bay. 35 rooms, including Billiard and Smoke Rooms. Hot and Cold Baths. Promenade roof with commanding view. Excellent Cuisine. Tariff Moderate. 'Phone 394.
MRS. HYMAN Proprietress.

THE DOMINION HOTEL,

TIMARU.
The most modern and up-to-date Hotel in Timaru, overlooking Caroline Bay and the Harbour. Everything new inside and out. Absolutely fireproof. Electric light, and replete with every convenience. Bath-rooms, hot and cold water on every floor. Moderate Tariff.
JOHN REILLY Proprietor.