

**BUSINESS ITEMS.**

**THE NATIONAL CASH REGISTER.**

Merchants and hotelkeepers have come to realise that they cannot carry the burden of detail in stores and keep abreast of the times without the aid of some system that conduces to relieve the strain of business, and yet at the same time to safeguard the interests of the same, and to this end the National cash register works. That it is an established fact is proved, over one million cash registers being operative at the present time. The question naturally arises: What are the advantages of the National cash register? This can be summed up in few words. It safeguards the interests of the employers, it minimises labour and compels correctness in detail. No business house or hotel is complete without the aid of a National cash register, and we draw attention to the fact that the growth and development of the National cash register is something remarkable, and these developments are embodied in a pamphlet entitled "Interesting Facts About a Great Industry," supplied by the National Cash Register Company, and can be obtained from the head office, Cuba Street, Wellington, or from any of the local branches.

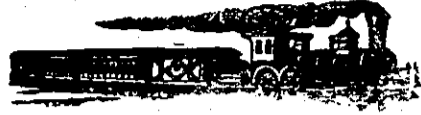
**FINLAY BROS., COACH PROPRIETORS, TE AWAMUTU.**

One of the most interesting and historical townships in the Waikato is Te Awamutu, famous for the many scenes of encounter between Maoris and Pakehas, and those of our readers who can spare the time should take an opportunity of visiting Orakau, adjacent to Te Awamutu, full of historic memories. Messrs. Finlay Bros., coach proprietors, possess horses and vehicles that make travelling a pleasure. One has only to pay a visit to their well-equipped livery and bait stables to see that the proprietors understand their business. Stalls, portable and otherwise, are supplied to accommodate some 150 horses, special facilities having been provided for the accommodation and care of racehorses and stud horses. The stables throughout are commodious, clean and comfortable, and the building has a double frontage, one facing the main road. The other, facing the saleyards, is now a scene of busy activity, carpenters being busily engaged in adding to the present accommodation. Messrs. Finlay Bros. personally superintend the control of the stables and horses, and coaches are despatched under their personal supervision. Their knowledge of the district enables the proprietors to extend every information necessary to the visiting tourists, and commercial travellers need have no hesitation in placing the care of samples in the hands of this progressive firm. Coaches meet all trains, saddle and buggy horses are always on hire, while the firm have now special facilities for the garaging of motor cars.

**EMPIRE PRIVATE HOTEL, FRANKTON.**

Travellers who desire to make their journey by the Main Trunk railway a pleasant one by creating a break at Frankton should not fail to stay at the Empire Private Hotel, of which Mr. J. A. Milne is the proprietor. This hotel, which is directly opposite the railway station on the left hand side of the railway from Auckland, consists of a ferro-concrete fire-proof building, and is undoubtedly one of the finest private hotels in the North Island. Sixty well-lit and splendidly-ventilated bedrooms are at the disposal of guests, while the lavatories and bathrooms are of the latest modern improvements. The furniture and bedrooms consist of oiled rimu, the staircase being of the same material. Cosy sitting-rooms, beautifully furnished, are provided on all flats, while writing and smoking rooms are provided for commercial gentlemen. The dining-room, capable of holding 100 guests, is very inviting, the clean napery and all the appointments going to make up a very pleasant appearance. The management of the culinary department is under the direct supervision of Mrs. Milne, who is ably assisted by her daughters, thus ensuring the comfort of lady visitors. This hotel is noted for its splendid table d' hote, and there is no doubt that in this department they excel. Mr. J. Milne also superintends the management, which, under his control, conduces to the comfort of guests. A motor car is always at the disposal of guests for

hire, while porters meet all trains, day or night. To our readers who desire to visit Hamilton this hotel will be found very convenient, being directly opposite the railway station, and a wire or letter to Mr. J. Milne will meet with prompt attention. As we have personally experienced the comforts of the Empire Private Hotel, we have no hesitation in recommending the same to our readers as being one of the finest leading private hotels in the Dominion.



**NEW ZEALAND RAILWAYS.**

**WANGANUI RACES.**

On 20th and 22nd May a Special Passenger Train will leave Palmerston North 6.45 a.m., Feilding 7.25 a.m., Marton 8.38 a.m., arriving Wanganui 10.40 a.m. Return train leaves Wanganui 5.20 p.m. for Palmerston North and Taihape. These trains will stop at Racecourse to set down and pick up passengers.

The usual 7.5 p.m. train, Marton to Taihape, will be delayed to leave Marton 7.45 p.m., after connecting with train (as above) from Wanganui.

The usual 7.15 a.m. train from Hawera will stop at Wanganui Racecourse to set down passengers.

The usual 4.5 p.m. train will be delayed to leave Wanganui 4.50 p.m., Racecourse 4.55 p.m., arriving Hawera 8.50 p.m.

Holiday Excursion Tickets, available for return until 24th May, will be issued to Wanganui on 20th May and by morning trains on 22nd May, from Hawera, Palmerston North, Taihape and intermediate stations.

These excursion tickets will not be available by the Mail trains.

For further particulars see posters. BY ORDER.

**G. W. CLARKE, AERATED WATER MANUFACTURERS, TUTANEKAI STREET.**

Home-brewed Stone Ginger Beer and Hop Beer a Specialty.

Ring up Phone 23.

**WESTLAND OPERA HOUSE HOKITIKA.**

SEATING ACCOMMODATION 600.

Suitable One-man Shows, Concerts and Pictures. Excellent Show Town.

For terms apply—**L. FITZSIMMONS, TOWN HALL GREYMOUTH.**

**STEFFANO WEBB** is an expert in Artistic Portraiture. His work is excellent and prices reasonable. Get your photo taken while in town.

**STEFFANO WEBB,** Maker of Life-like Portraits, Petersen's Buildings, 252 High St., Phone 1989. CHRISTCHURCH.

**NEW OCCIDENTAL HOTEL.**

LAMBTON QUAY, WELLINGTON.

**MR. C. E. ALDRIDGE,** for some years in charge of the Hotel Cecil, has entered into possession of this well-known and popular hostelry. A hearty welcome to old and new friends. Wines and Cuisine of the Very Best. Telegrams receive prompt attention.

**"RIVERSIDE" PRIVATE HOTEL, TE KUITI.**

EXCELLENT ACCOMMODATION FOR VISITORS.

Electric Light. First-class Table. 25 Spacious Rooms.

RECENTLY ENLARGED AND RENOVATED.

Letters and Telegrams Attended To.

Tariff, 5s. 6d. per diem.

**MRS. J. STEWART** ... Proprietress.

VISITORS TO NELSON. STAY AT

**THE MASONIC HOTEL.**

**J. P. BEIRNE** ..... Proprietor.

(Late of the Grosvenor Hotel, Blenheim, and Oxley's Hotel, Picton). Has taken over the MASONIC, Nelson's Leading Hotel, and visitors to the "City of Sunshine" are assured of first-class treatment at this well-known establishment.

ACCOMMODATION SECOND TO NONE.

ONLY BEST BRANDS OF LIQUORS SOLD.

**OPERA HOUSE.**

**MATINEES WEDNESDAYS AND SATURDAYS AT 2.30.**

Straight-out Otto Vaudeville.

**GEO. E. EDWARDS,** assisted by **MISS ROSIE PARKES,** in 15min. Comedy Jumble.

**KELLY AND POLLOCK.**  
**GEO. CAMPBELL, TOM DAWSON,**  
**MR. GEO HALL, LES WARTON,**  
**COURTNEY AND SHAW,**  
**BLANCHE CORELLI.**  
**FRANK, LANK AND ALICE.**

Week Night Prices: DC and O.S., 2s.; Stalls, 1s. 600 Seats at 6d. Reserves, 2s. 6d. at Robertson's to 6 p.m. thereafter at Theatre to 7 p.m., or by phone 1595. Booking 6d.

The Owners of N.Z. Patents No. 31234 and No. 31286, both of 1911, entitled "Carburettors for Internal Combustion Engines," are desirous of disposing of the Patents or entering into working arrangements under license or otherwise with firms likely to be interested in same. A copy of the Patent Specifications and full particulars can be obtained and offers made (for transmission to the owners) to Mr. J. A. Burke, 5 Primrose Buildings, 255a George St., Sydney New South Wales.

**UNIVERSAL FILM SUPPLY CO.**

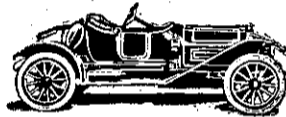
FOWLDS BUILDINGS, MANNERS STREET, WELLINGTON.

ALSO GLEESON'S BUILDINGS, AUCKLAND; AND LONDON.

Positively the LARGEST INDEPENDENT FILM SERVICE IN NEW ZEALAND is controlled by us. We have nothing to do with any "combine," ring, or trust.

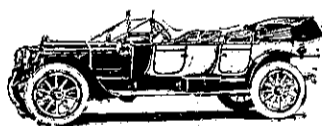
We supply film, but do not compete against our clients in the motion picture theatre business.

Our films are selected by our buyers at the world's markets. No picture is too good for us.



**ROYAL MAIL.** Nelson-Motueka-Takaka Motor Car Service.

**NORMAN L. EMMS** ..... Proprietor. Time-table: Nelson-Takaka, Tues., Thurs., Sat., 10 a.m. Takaka-Nelson, Mon., Wed., Fri. 10 a.m. Fares, 20s. Single, 38s. Return. Book seats in Nelson, Tattersall's Stables (phone 39); private address, Wakatu Hotel (phone 120). Telegrams noted.



**CARS FOR HIRE DAY OR NIGHT.** Tel. 176

**GEORGE D'EMDEN,** Motor Proprietor. 54, NILE ST. EAST, NELSON. Charges reasonable. All steamers met. Visitors to Nelson wire for car.

**MR. A. G. PILKINGTON,** BARRISTER AND SOLICITOR, CAXTON CHAMBERS, SWANSON STREET, AUCKLAND.

Loans arranged on approved securities

**MONEY TO LEND** at a Moderate Rate of Interest.

**JACKSON & RUSSELL,** SOLICITORS, SHORTLAND STREET.

**EMPIRE PRIVATE HOTEL, FRANKTON JUNCTION.**

New three-storey fireproof concrete house. 60 rooms, beautifully furnished; electric light. First-class Cuisine. Hot and cold baths. All trains met. Telephone 325.

**J. A. MILNE** ..... Proprietor.

**FINLAY BROS.,**

LIVERY STABLES AND COACH PROPRIETORS,

**TE AWAMUTU.**

COACHES MEET ALL TRAINS.

HORSES BUGGIES AND DRAGS FOR HIRE.

MOTOR CARS GARAGED.

Travellers' Samples Taken to any Part of the District.

Telegrams: "Finlay, Te Awamutu." P.O. Box 2. Telephone 20.

**Roll up**

some sweet, fresh, moist tobacco into "A.G." Cigarette Paper and then—then see if you don't prefer the cigarettes you make yourself to the ones you buy ready-made. But insist on "A.G." Cigarette Paper.

**Cigarette Paper Sold Everywhere.**

**N. L. BAIRD**

(THE SIGN MAN).

**THEATRICAL, SCENIC AND POSTER ARTIST,**

127, ALBERT STREET, AUCKLAND.

Professional and Amateur Scenery and Effects Designed and Painted by a First-class Professional Staff.

We have in store a good selection of Cloths, Wings and General Accessories, suitable for large and small theatres and halls. These we can Loan on Hire at Reasonable Charges.

Society, Concert and Variety Entertainments. Specially Catered for.

**PUBLIC TRUST OFFICE.**

SAFE DEPOSIT VAULTS.

The Commodious Vaults of the Public Trust Office, Wellington—fire and earthquake proof—have been fitted up with CHUBB'S BURGLAR AND FIRE-PROOF LOCKERS.

The Lockers are of various sizes, and may be leased for the deposit of Documents, Plate, Jewellery, and other Valuables. Each Locker requires two keys to open it. One is given to the Lessee, and the other is held by the Office.

Special arrangements are made for the Lessee getting access to his Locker at any hour. For rent and other particulars apply to the Office.

**PUBLIC TRUSTEE.**

**MOTUEKA MOTOR WORKS AND LIVERY STABLES.**

Cars and Vehicles on Hire at all Hours.

Tours Arranged to all Parts of the District. Terms Reasonable.

Telegrams—

**C. J. STARNES** ..... Motueka.

**DUNEDIN JOCKEY CLUB.**

**Winter Meeting, June 3 & 5, 1915.**

FIRST RACE AT 12.30 EACH DAY.

Special Train Service.

**H. L. JAMES,**

Secretary.

**The National Bank of New Zealand, Limited.**

HEAD OFFICE, 17, MOORGATE STREET, LONDON, E.C.

AUTHORISED CAPITAL, £3,000,000.

Subscribed, £2,250,000. Paid-up, £750,000. Reserve Fund, £665,000.

**BANKERS:**

Bank of England. Lloyds Bank, Limited. The Royal Bank of Scotland. Secretary and London Manager—H. F. Freshwater.

HEAD OFFICE IN THE DOMINION, WELLINGTON.

General Manager, J. H. COATES (on leave), D. W. DUTHIE, Acting.

DRAFTS AND LETTERS OF CREDIT ISSUED TO TRAVELLERS. CORRESPONDENTS THROUGHOUT THE WORLD.