

**NEW ZEALAND HOTEL DIRECTORY. — (CONTINUED). — PATRONISED BY HORSEMEN, CYCLISTS, MOTORISTS, SPORTSMEN, COMMERCIAL TRAVELLERS AND THE THEATRICAL PROFESSION.**

**TAUPIRI.**

**TAUPIRI HOTEL.**  
TAUPIRI.

SPLENDID ACCOMMODATION.  
CLOSE TO RAILWAY STATION.  
THE VERY BEST LIQUORS IN STOCK.

S. KEOGH ..... Proprietor.

**THAMES.**

**SALUTATION HOTEL.**  
MARY STREET, THAMES.

HARRY BROWNLEE, Proprietor.

Only SPEIGHT'S ALE on Draught.  
Best Ale in Town.

"Caed Mille Fallthe."

**SHORTLAND HOTEL.**  
THAMES.

Three minutes from train and Shortland Wharf. First-class Accommodation; Excellent Table. All Liquors Fresh as the latest news. C. and E. Ale on Draught.

W. CANNER ..... Proprietor.  
Phone 145.

**POST OFFICE HOTEL.**  
MARY STREET, THAMES.

Visitors will find here excellent accommodation, and the very Best Wines, Spirits, and Ales.

MRS. W. MORRISON .. Proprietress.

**TE AWAMUTU.**

**TE AWAMUTU HOTEL.**  
TE AWAMUTU.

(Containing over fifty rooms.)

THE HOME FOR COMMERCIALS AND TOURISTS.

Hot and cold baths, and every modern convenience. Best Dunedin Ales on draught.

Travellers by Main Trunk Express specially catered for. Phone No. 2.  
JAS. JACKSON ..... Owner.

**TIMARU.**



**SEA VIEW HOUSE.**  
(Private) TIMARU.

Four minutes from Post Office. Overlooking Caroline Bay. 35 rooms, including Billiard and Smoke Rooms. Hot and Cold Baths. Promenade roof with commanding view. Excellent Cuisine. Tariff Moderate. Phone 394.

MRS. HYMAN ..... Proprietress.

**THE DOMINION HOTEL.**  
TIMARU.

The most modern and up-to-date Hotel in Timaru, overlooking Caroline Bay and the Harbour. Everything new inside and out. Absolutely fireproof. Electric light, and replete with every convenience. Bath-rooms hot and cold water on every floor. Moderate Tariff.

JOHN REILLY ..... Proprietor.

**W. QUIRKE**

(Late of the Crown and Royal Hotels). Has taken over the well-known and favourite

**EXCELSIOR HOTEL.**  
TIMARU.

Friends will find the Wines, Ales, and Cuisine up to the standard that has been identified with his previous hosteleries.

**City Boardinghouse**

Corner CHURCH AND SOPHIA STS., TIMARU.

Conducted on up-to-date lines. Every comfort and attention. First-class meals. Special accommodation for holiday visitors.

J. J. DREW ..... Proprietor.

**WHANGAREI.**



**WHANGAREI HOTEL.**  
WHANGAREI.

This fine House, just re-built in brick and furnished in up-to-date style, now offers unrivalled Accommodation to the Travelling Public.

Sample Room. Hot and Cold Baths. Two minutes' walk from Saltwater Bathing Place.

Stabling second to none.  
Best Wines, Ales and Spirits kept in Stock.

SAMUEL McMAHON .... Proprietor.

**SETTLERS' HOTEL.**  
WHANGAREI.

The New Settlers' Hotel is now open to receive Commercial and the Travelling Public.

Thirty spacious and well ventilated Bedrooms. Luxurious Sitting and Commercial Rooms. Fireproof structure.

ONLY THE VERY BEST BRANDS OF LIQUORS STOCKED.

EXCELLENT CUISINE.  
PERSONAL SUPERVISION.

Telegrams Attended to Promptly.

J. W. BURDETT ..... Proprietor.  
(Late of Kawakawa and Tangiteroria.)

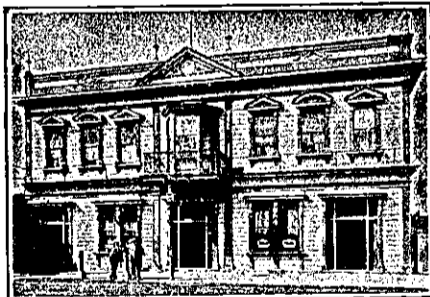
**WANGANUI.**



**FOSTER'S HOTEL.**  
TAUPO QUAY, WANGANUI.

Nearly Opposite Town Bridge.  
A HOME AWAY FROM HOME.  
Tel. No. 46. P.O. Box No. 54.

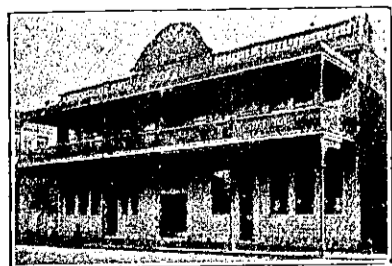
J. R. FOSTER ..... Proprietor.



**PROVINCIAL HOTEL.**  
WANGANUI.

FIRST-CLASS ACCOMMODATION FOR THE TRAVELLING PUBLIC.  
ONLY THE BEST OF ALES, WINES, AND SPIRITS KEPT IN STOCK.

W. TUCK ..... Proprietor.



**McCARTHY'S HOTEL.**  
WANGANUI.

Immediately Opposite Railway Station and Wharves.

C. J. McCARTHY ..... Proprietor.  
Box 135. Phone 147.

**ALBION HOTEL.**  
WANGANUI.

The above Hotel is now under new Management.

ONLY THE BEST WINES AND SPIRITS STOCKED.

HORACE M. SOMERVILLE,  
Proprietor.

**WANGANUI.**

**RUTLAND LIVERY AND BAIT STABLES.**  
WANGANUI.

For all kinds of vehicles, including motor cars, try the Rutland Stables. Night porter always in attendance.  
Phone 120.

WINDELBURN BROS., Proprietors.

**WHANGAHEHU.**

**BRIDGE HOTEL.**

**WHANGAHEHU.**

**GUS. McDONALD ..**

Has pleasure in announcing he has taken over the above well-known Hotel, and will supply all leading brands of Beer and Spirits.  
Extra paddocking accommodation is now provided for drovers.

**WAIPUKURAU.**

**TAVISTOCK HOTEL.**  
WAIPUKURAU, HAWKE'S BAY.

The above Hotel has just been re-built and refurnished throughout, and is now replete with every convenience. Waipukurau is the noted health resort of the Province. Good fishing and shooting. Excellent Accommodation for the Travelling Public.

DONALD McLEOD ..... Proprietor.  
(Late Whangarei and Feilding.)

**WELLINGTON.**

**SHEPHERDS' ARMS HOTEL.**

TINAKORI ROAD, WELLINGTON.

This well-known Hostelry has been taken over by MRS. A. DUGGAN, who extends a hearty welcome to all.

Staples' Best Ales on Draught.  
Wines and Spirits true to Label.

**ROYAL HOTEL.**

LAMBTON QUAY, WELLINGTON.

J. CONNELL ..... Proprietor.  
(Late of Middleton's Hotel, Opunake.)  
Staples' Prize Ales on Draught.  
Wines and Spirits true to Label.  
A hearty welcome to all old and new friends.  
Tariff 35s. per week. or 6s. 6d. day.

**TRAMWAY HOTEL.**

ADELAIDE ROAD, WELLINGTON.

Begs to inform his Friends and the Public that he has taken over this well-known Hotel. Visitors can rely on getting only the Best.

MR. FRANK McPARLAND



PATRONISED BY ROYALTY.

**HOTEL CECIL.**  
WELLINGTON, N.Z.

Opposite Government Railway Station and Junction of City Tramways, and Adjoining Parliamentary Buildings.

EXCELLENT CUISINE AND EVERY MODERN CONVENIENCE.

P.O. Box 372. Phone No. 354.  
Telegraphic Code: "Cecil."

TARIFF ON APPLICATION.

COOK'S COUPONS ACCEPTED.

JAMES McPARLAND,  
Proprietor.

**THE EMPIRE HOTEL**

(LIMITED).

THE LEADING & MOST CENTRAL HOTEL IN WELLINGTON.

**N.Z. SPORTING & DRAMATIC REVIEW.**

PRICE 6d.—All Booksellers.

Printed and Published by ARTHUR CLEAVE, of Ellerslie, at his Registered Printing Office, Vulcan Lane, Auckland, for the Proprietors, Arthur Cleave and Co., Ltd.

THURSDAY, APRIL 22, 1915.

**POST OFFICE HOTEL.**  
WELLINGTON.

Offers First-class Accommodation at a Moderate Tariff. Excellent Cuisine. Telegrams: Post Office Hotel, Wellington. Telephone 2827.

MRS. M. McVINISH.

**CITY HOTEL**

(Opp. Courtenay Place Tram Terminus), WELLINGTON.

J. J. FIRTH ..... Proprietor.  
(Late of Caledonian Hotel).

Speight's and Staples' Ales on Tap.

**SHAMROCK HOTEL.**

MOLESWORTH ST., WELLINGTON.

This well-known Hostelry has been taken over by MR. H. B. REID, formerly of the Wairau Valley Hotel, Marlborough.

A HEARTY WELCOME TO ALL OLD AND NEW FRIENDS.

STAPLES' BEST ALES AND WINES AND SPIRITS TRUE TO LABEL.

FIRST-CLASS ACCOMMODATION.

TARIFF 6S. 6D. PER DAY, OR 30S. WEEKLY.

**UPPER HUTT.**

**PROVINCIAL HOTEL.**  
UPPER HUTT.

The Provincial offers all the comforts of a first-class home.  
THE ONLY HOTEL IN THE TOWN SHIP.

First-class Stabling Accommodation.

Wines, Beers, and Spirits of the very Best.  
Letters and Telegrams Promptly Attended to.

MRS. M. E. YOUNG .... Proprietress.

**WAIKARI.**

**STAR AND GARTER HOTEL.**  
WAIKARI.

Situated on the Main North Road to Hamner.

Tourists and Travellers can obtain Excellent Accommodation and Refreshments. Motor garages close handy.

J. G. WHITMORE ..... Proprietor.

**WAITARA.**

**WAITARA HOTEL.**  
WAITARA.

THE RECOGNISED HOUSE FOR COMMERCIAL TRAVELLERS.  
FIRST-CLASS ACCOMMODATION FOR THE TRAVELLING PUBLIC, AT MODERATE TARIFF.

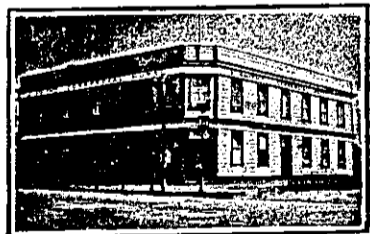
HOT AND COLD PLUNGE AND SHOWER BATHS.

Night Porter in Attendance.  
Telephone No. 7. P.O. Box 28.

Letters and Telegrams Promptly Attended to.

E. KERR ..... Proprietor.

**WAVERLEY.**



**COMMERCIAL HOTEL.**  
WAVERLEY.

E. A. HART ..... Proprietor.

THE APPOINTED HOTEL FOR COMMERCIAL TRAVELLERS.

First-class Accommodation for the Travelling Public. Hot and Cold Shower Baths. TARIFF: 6s. per day.

**WAIPAWA.**

**COMMERCIAL HOTEL.**  
WAIPAWA.

Private Suites of Apartments and every Convenience for the Accommodation of the Public.

WINES, SPIRITS AND BEER OF THE BEST QUALITY ONLY.

A FIRST-CLASS BILLIARD TABLE.

Stabling and Paddock Accommodation.

W. PELLOW ..... Proprietor.